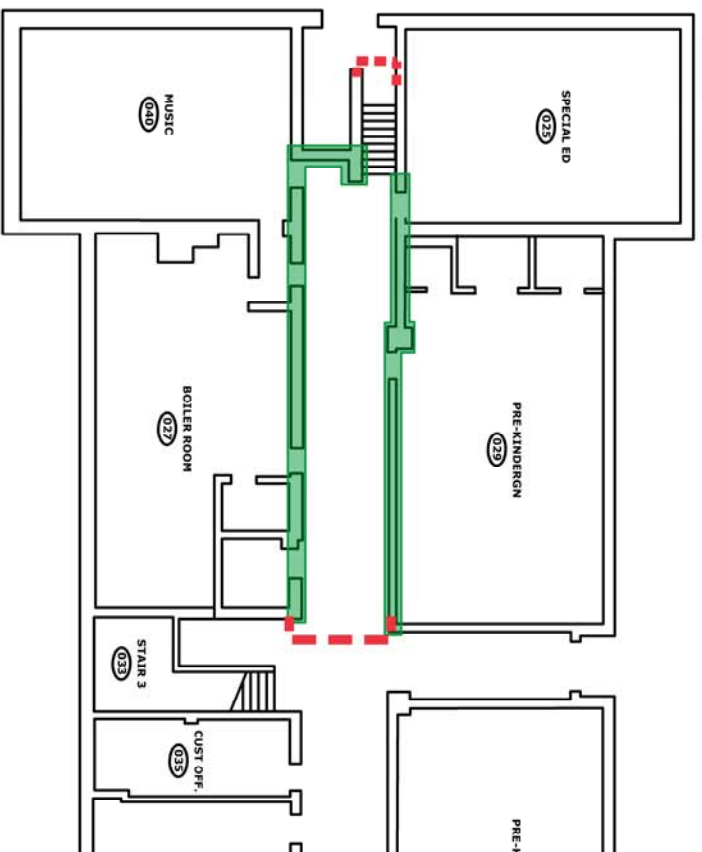


GROUND FLOOR



AREA SHOWN



LEGEND
 REMOVE DRYWALL FROM FLOOR TO TWO FEET
 CLEAN AND DISINFECT AREA



REMOVE DRYWALL AT WINDOW JAMBS AND HEADERS.
 REMOVE WINDOW SILL. REMOVE 2' X 4' SECTION OF
 DRYWALL AT FLOOR FOR ASSESSMENT OF VOID SPACE IN
 EACH ROOM. CLEAN AND DISINFECT AREA

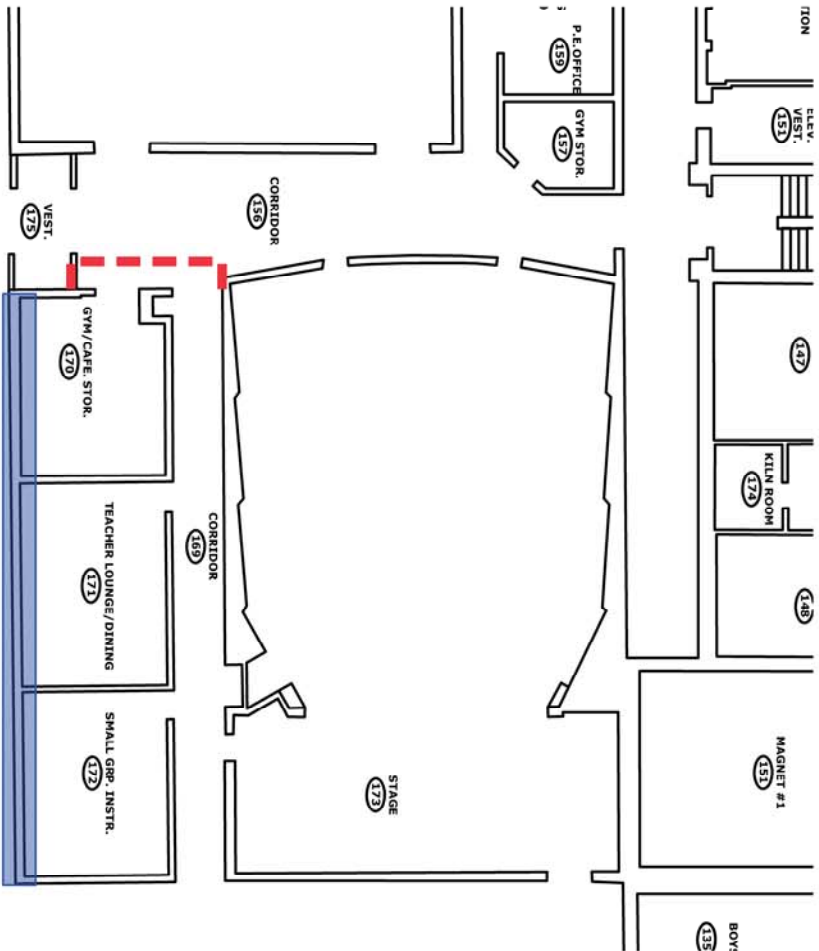


INSTALL HARD BARRIERS PRIOR TO WORK. MAINTAIN
 THROUGHOUT DURATION OF WORK.

GENERAL NOTES

- INSTALL ONE LAYER NEGATIVE PRESSURE CONTAINMENT
- CLEAN AND DISINFECT HVAC DIFFUSER VENTS AND ADJACENT CEILING TILES (REMOVE CEILING TILES IF UNABLE TO BE CLEANED)
- REMOVE WATER STAINED/MOLD GROWTH IMPACTED CEILING TILES FOR DISPOSAL
- REMOVE WATER AND/OR MOLD GROWTH IMPACTED FIBERGLASS PIPE INSULATION ABOVE CEILINGS AND WITHIN DRYWALL CAVITIES
- CLEAN AND DISINFECT AREA

FIRST FLOOR



AREA SHOWN



DRAFT

HART MAGNET ELEMENTARY SCHOOL
 STAMFORD, CONNECTICUT

APRIL BREAK
 AREAS 3 & 4

DATE: 3/28/2019
 NOT TO SCALE
 FIGURE FIGURE 3.3

Tighe & Bond
 Engineers | Environmental Specialists