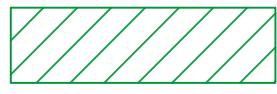
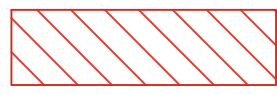
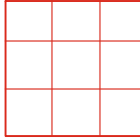
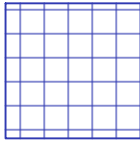



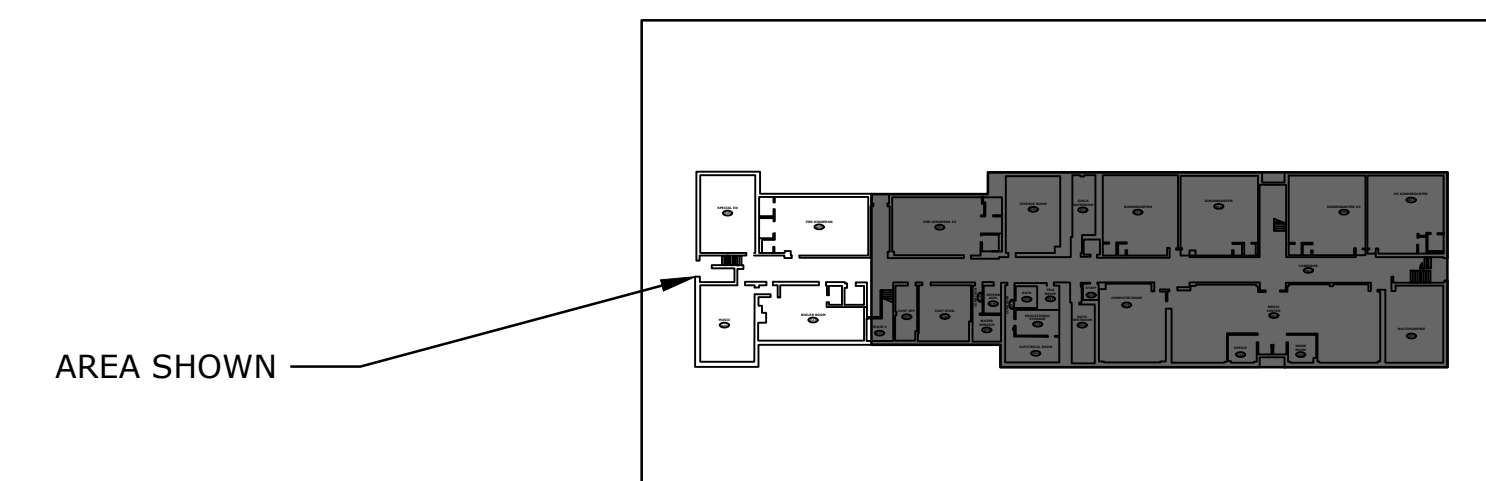
**LEGEND**

-  REMOVE DRYWALL FROM FLOOR TO FOUR FEET. CLEAN AND DISINFECT AREA.
-  REMOVE DRYWALL FROM FLOOR TO CEILING. CLEAN AND DISINFECT AREA.
-  REMOVE GROWTH IMPACTED/PAINATED OVER METAL DIFFUSER GRILL FOR DISPOSAL. CLEAN AND DISINFECT AREA.
-  OPEN AND CLEAN AND DISINFECT ASSESSIBLE AREAS OF AIR HANDLER UNIT.
-  INSTALL EDGE GUARD AND/OR HARD BARRIERS PRIOR TO WORK. MAINTAIN THROUGHOUT DURATION OF WORK.

**GENERAL NOTES**

INSTALL ONE LAYER NEGATIVE PRESSURE CONTAINMENT.  
REMOVE ALL CEILING TILES FOR DISPOSAL.  
REMOVE WATER AND/OR MOLD GROWTH IMPACTED FIBERGLASS PIPE INSULATION ABOVE CEILINGS AND WITHIN DRYWALL CAVITIES.  
CLEAN AND DISINFECT AREA.

**GROUND FLOOR PLAN**



**Hart Magnet Elementary School**

City of Stamford

Stamford, CT

MARK	DATE	DESCRIPTION

PROJECT NO:	S2087
DATE:	2/13/2019
FILE:	Hart Mold Remediation.dwg
DRAWN BY:	WAC
CHECKED:	XX
APPROVED:	XX

Area #1

SCALE: NOT TO SCALE

Figure 3.1