

LEGEND

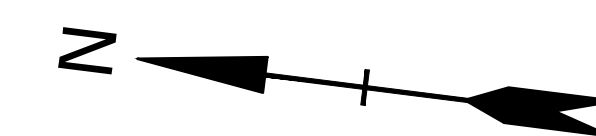
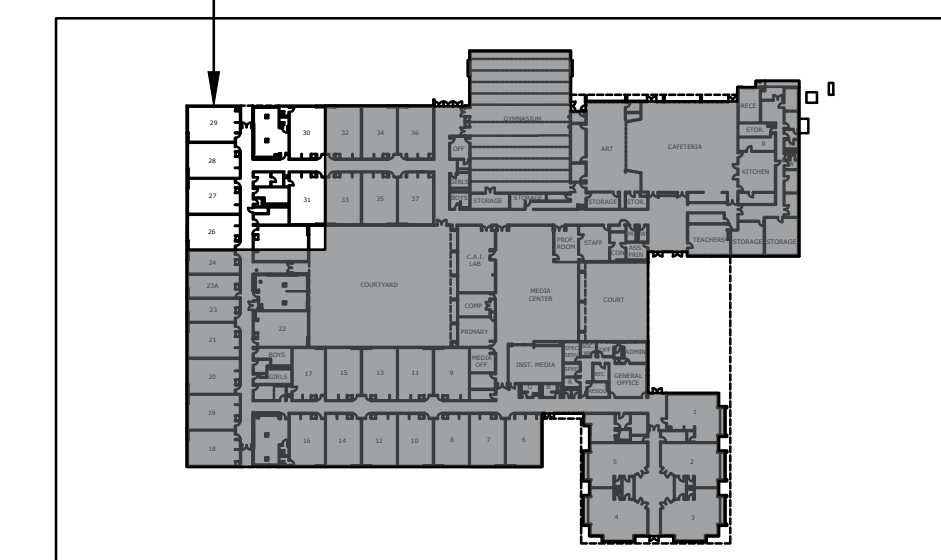
- REMOVE VINYL COVERING AND DRYWALL/ASBESTOS TAPING COMPOUND SOFFIT IN ENTIRETY
REMOVE WATER STAINED AND/OR MOLD GROWTH IMPACTED PIPE INSULATION ABOVE SOFFIT
CLEAN AND DISINFECT AREA
- REMOVE TACKBOARD, ASBESTOS GLUE DAUBS, AND DRYWALL/ASBESTOS TAPING COMPOUND IN ENTIRETY
REMOVE WATER IMPACTED AND/OR MOLD GROWTH IMPACTED RIGID INSULATION
CLEAN AND DISINFECT AREA
- REMOVE ASBESTOS CEMENT RADIATOR BOARDS
- HARD BARRIER

GENERAL NOTES

WORK SHALL BE CONDUCTED WITHIN NEGATIVE PRESSURE ASBESTOS CONTAINMENTS
 REMOVE WATER STAINED AND/OR GROWTH CEILING TILES FOR DISPOSAL
 REMOVE WATER STAINED AND/OR MOLD GROWTH IMPACTED PIPE INSULATION ABOVE CEILINGS
 CLEAN AND DISINFECT METAL DIFFUSERS AND VENTS
 (REMOVE IMPACTED ADJACENT CEILING TILES IF UNABLE TO BE CLEANED)

DRAFT - NOT FOR CONSTRUCTION

AREA SHOWN



Plot Scale: 3/7/2019
 Plotted On: Mar 07, 2019 4:11pm By: wechamagne
 Tighe & Bond: \\tighebond.com\data\Projects\S\S2087-Stamford\033-Mold Remediation-Consulting\Sites\Davenport\Drawings\CAD\Davenport Mold Remediation.dwg

**Davenport
Ridge
Elementary
School**

City of Stamford

Stamford, CT

MARK	DATE	DESCRIPTION
PROJECT NO:	S2087	
DATE:	3/7/2019	
FILE:	Davenport Mold Remediation.dwg	
DRAWN BY:	WAC	
CHECKED:	XX	
APPROVED:	XX	

AREA 1

SCALE: NOT TO SCALE

FIGURE 3.1