



**Bounce Saucer Pad - Top component missing - CLASS B HAZARD**



**Surfacing - Small cracks in rubber - MAINTENANCE**



**Alligator (SoundPlay) - Wood broken, cracked & splintered - CLASS B HAZARDS**



**Alligator (SoundPlay) - Music component is missing - MAINTENANCE**



**Environment**

**Site Amenities - One bench damaged - MAINTENANCE**





**STILLMEADOW ELEMENTARY SCHOOL  
Area #3**

**Overview**

**This playground is in poor condition. The many equipment hazards and maintenance issues should be addressed.**

**EQUIPMENT INVENTORY  
Medium Composite Structure**

**Manufacturer  
GameTime**



**Freestanding Equipment**  
**8ft. Swing Set (2 Bays/2 Belt/2 HDCP)**  
**Landscape Structures**



**7ft. Tire Swing**  
**Landscape Structures**



**Sway Fun Glider**



**Landscape Structures**



**Turtle**



**SoundPlay**

**SURFACING MATERIAL**

---

Poured in Place Rubber  
Engineered Wood Fiber

**MANUFACTURER CONTACT  
INFORMATION**

---

**Landscape Structures**

601 7th Street South  
Delano, MN 55328  
800-328-0035  
[www.playlsi.com](http://www.playlsi.com)

**GameTime**

PO Box 680121  
Ft. Payne, AL 35968-0121  
800-633-2394  
[www.gametime.com](http://www.gametime.com)

**SoundPlay**

PO Box 115  
Parrott, GA 39877  
229-623-5545  
[www.soundplay.com](http://www.soundplay.com)

**GENERAL PLAYGROUND ENVIRONMENT**

**Playground Condition:**

**POOR**

**Area #** 3

**General Site Conditions**

		<b>Condition</b>	<b>Hazard</b>	<b>Recommendation</b>
1	Playground Location at Facility Number of footings in area	Back of School 50		
2	Distance from roads and parking lots	20 feet		
3	Fencing-total, partial, height, type	Total		
4	Traffic or fence hazard Condition	4ft. Metal & 4ft. Chain Three sections of 4ft. metal fence damaged	Maint.	Repair three sections of metal fence
5	Site conditions-level, hill, pitched	Pitched		
6	Drainage Problems	None		
7	Encroachment of brush or poisonous plants-where	None		
8	Bees or insects/animals noted	None		
9	Site Amenities-bench, TR, Table Condition	Picnic Tables, TR Good		
10	Border/Edging-type	Concrete		
11	Shade Structure or shade	Roof & Shade structure		
12	<b>Signage</b>			
	Age Appropriate Signs/Stickers?	Yes		
	Equipment Age Appropriate, 2-5, 5-12	5-12 years		
	Adult Supervision sign or sticker?	Yes		
	Warning Signs installed?			
	Hard Surface	Yes		
	Heat	Yes		
	Drawstring/Strangulation	Yes		

General Site Conditions	Condition	Hazard	Recommendation
-------------------------	-----------	--------	----------------

Surface Marker signs on uprights?	PIP - N/A EWF - Yes		
-----------------------------------	------------------------	--	--

Playground Rules & General Information Sign?	Yes		
--	-----	--	--

### 13 Accessibility

Accessible Entrance 36" wide ?	Yes		
--------------------------------	-----	--	--

Accessible path to play area ?	Yes		
--------------------------------	-----	--	--

Accessible surface in use zone?	Yes		
---------------------------------	-----	--	--



**STILLMEADOW ELEMENTARY SCHOOL**

**AREA #3 CONDITION REPORT**

		<b>Condition</b>	<b>Hazard Priority</b>	<b>Recommendation</b>
<b>Medium Composite Structure (GameTime)</b>				
<b>Components</b>				
Accessible Dragon		Good		
Tunnel Up		Good		
Crazy Eight Climber		Good		
Piston Panel		Missing handle	Maint.	Replace handle
Run Ladders (1)		Good		
Chin Up Bars (3)		Good		
Arch Bridge		Good		
Clover Climber		Good		
Twister Climber		Good		
Double Climber		Good		
Crawl Tube		Good		
Wavy Tree Climber		Good		
Mega Rock Climber		One bolt cap missing	Maint.	Replace one cap
Spiny Arch Climber		Good		
Stairs (4)		Plastisol worn & missing at three stairs	Maint.	Replace stairs
		One stair exposed holes in steel	B	Replace stairs
360° Alpine Slide		Good		
Baseball Panel		Good		
Overhead Tree Climber		Good		
Slide & Glide Slide		Good		
Bench Seats (2)(below)		Good		
Wiggle Tube Slide		Cracked at top hood section	B	Replace top hood section
Crunch Bar (1)		Good		
Decks (9)		Plastisol wearing Three triangle decks cracked	Maint. B	Monitor Replace three triangle decks
Pipe Barriers		Good		
Surfacing	EWF 5-12"	Insufficient No wear mats under slide exits	A C	Add EWF & level See Notes
Use Zone		Good		

**AREA #3 CONDITION REPORT**

		<b>Condition</b>	<b>Hazard Priority</b>	<b>Recommendation</b>
Structural Stability		Structure rusting & showing gaps at support post joints	Maint.	Monitor
<b>Freestanding Equipment</b>				
<b>8ft. Swing Set (2 Bays) (Landscape)</b>				
		Chains worn & two belt seats	A	Replace chains & two belt seats
		Chains worn on Inclusion seats	A	Replace all chains on Inclusion seat
Surfacing	PIP 2½ - 3"	Large holes in PIP	Maint.	Repair 25 sq.ft. rubber
Use Zone		Good		
Structural Stability		Good		
<b>7ft. Tire Swing (Landscape)</b>				
		Tire swing seat is missing	Maint.	Replace tire
Surfacing	PIP 2½ - 3"	Holes in PIP	Maint.	Repair 25 sq.ft. rubber
Use Zone		Good		
Structural Stability		Good		
<b>Sway Fun Glider (Landscape)</b>				
		Good		
Surfacing	PIP 2½ - 3"	Good		
Use Zone		Inadequate at 48" at rear use zone	C	Increase to 6ft. at rear use zone
Structural Stability		Good		
<b>Turtle (SoundPlay)</b>				
		Music component missing	Maint.	Replace music component
Surfacing		Insufficient	B	Add surfacing
Use Zone		No defined use zone	B	Create use zone & add surfacing

**AREA #3 CONDITION REPORT**

	<b>Condition</b>	<b>Hazard Priority</b>	<b>Recommendation</b>
Structural Stability	Good		
<b>Environment</b>			
Traffic or Fence hazard	Three sections of 4ft. metal fence damaged	Maint.	Repair three sections of fence

**Notes:**

**There are no wear mats at the slide exits of the medium composite. ADA requires wear mats for accessibility and the prevention of holes at the slide exits.**

**It is the playground owner's responsibility to maintain the test results for the safety surfacing showing that the depth is appropriate for the fall height of the equipment in the playground.**

**Hazard and Maintenance Pictures  
Area #3**

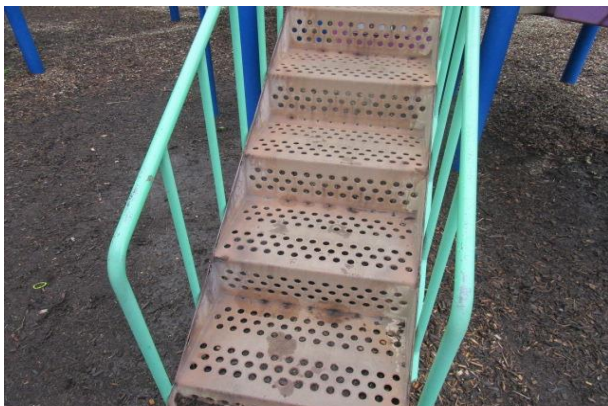
**Medium Composite Structure - GameTime  
Piston Panel - Missing handle - MAINTENANCE**



**Mega Rock Climber - One bolt cap missing - MAINTENANCE**

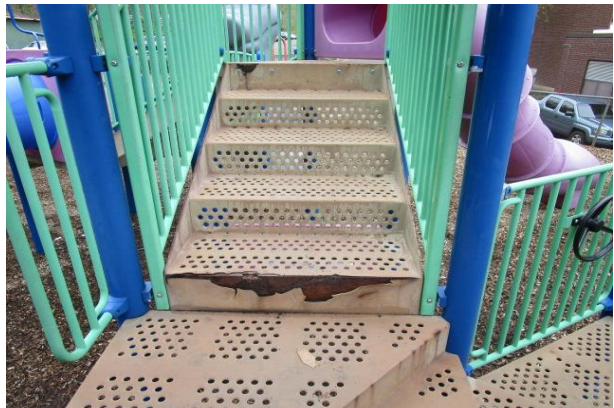


**Stairs (3) - Plastisol worn & missing at three stairs - MAINTENANCE**





**Stairs - One stair exposed holes in steel - CLASS B HAZARD**





**Wiggle Tube Slide - Cracked at top hood section - CLASS B HAZARD**



**Decks (9) - Plastisol wearing - MAINTENANCE**

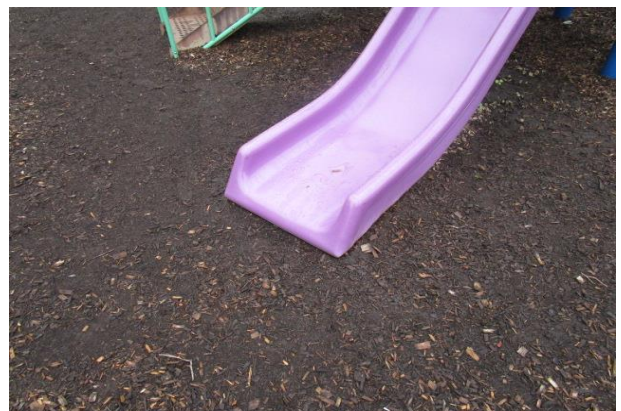


**Decks (9) - Three triangle decks cracked - CLASS B HAZARD**





**Surfacing - No wear mats at slide exits - CLASS C HAZARD**



**Structural Stability - Structure rusting & showing gaps at support post joints - MAINTENANCE**

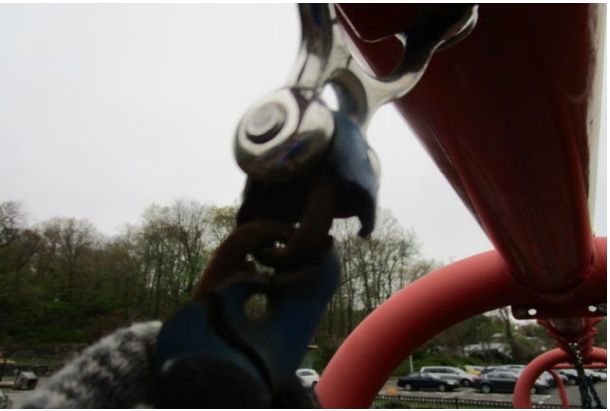






**Freestanding Equipment**  
**8ft. Swing Set (2Bays)(Landscape) - Chains worn at two belt seats - CLASS A HAZARD**





**8ft. Swing Set (2Bay)(Landscape) - Chains worn at Inclusion seats - CLASS A HAZARD**



**8ft. Swing Set - Surfacing has large holes - MAINTENANCE**



**7ft. Tire Swing (Landscape) - Tire Swing seat is missing - MAINTENANCE**



**Tire Swing - Holes in the PIP surfacing - MAINTENANCE**



**Sway Fun Glider - Use zone inadequate at 48" at rear - CLASS C HAZARD**



**Turtle (SoundPlay) - Music component missing - MAINTENANCE**



**Fence - Three sections of 4ft. metal fence damaged - MAINTENANCE**



**STILLMEADOW ELEMENTARY SCHOOL  
Area #4**

**Overview**

**This playground is in poor condition. All hazards and maintenance issues should be addressed. The composite should be closed until repaired.**

**EQUIPMENT INVENTORY**  
**Small Composite Structure**

**Manufacturer**  
**Miracle Recreation**



**Freestanding Equipment**  
**Play Huts (2)**



**Miracle Recreation**



**Play Huts (2)**

**Miracle Recreation**



**Sand Water Table**

**Miracle Recreation**



**SURFACING MATERIAL**

---

Engineered Wood Fiber

**MANUFACTURER CONTACT  
INFORMATION**

---

**Miracle Recreation**

PO Box 420

Monett, MO 65708

800-523-4202

[www.miracle-recreation.com](http://www.miracle-recreation.com)



**GENERAL PLAYGROUND ENVIRONMENT**

Area # 4

Playground Condition:

**POOR**

**General Site Conditions**

		<b>Condition</b>	<b>Hazard</b>	<b>Recommendation</b>
1	Playground Location at Facility Number of footings in area	Side of school 35		
2	Distance from roads and parking lots	10 feet		
3	Fencing-total, partial, height, type	Total - 4ft. Chain link		
4	Traffic or fence hazard	Top rail missing at one section	Maint.	Repair top rail
5	Site conditions-level, hill, pitched	Level		
6	Drainage Problems	None		
7	Encroachment of brush or poisonous plants-where	None		
8	Bees or insects/animals noted	None		
9	Site Amenities-bench, TR, Table Condition	TR Good		
10	Border/Edging-type Condition	Asphalt Good		
11	Shade Structure or shade	Roofs & trees		
12	<b>Signage</b>			
	Age Appropriate Signs/Stickers?	Yes		
	Equipment Age Appropriate, 2-5, 5-12	2-12 years		
	Adult Supervision sign or sticker?	Yes		
	Warning Signs installed?			
	Hard Surface	Yes		
	Heat	Yes		
	Drawstring/Strangulation	Yes		

<b>General Site Conditions</b>	<b>Condition</b>	<b>Hazard</b>	<b>Recommendation</b>
Surface Marker signs on uprights?	Yes		
Playground Rules & General Information Sign?	No	Maint.	See Notes

### 13 Accessibility

Accessible Entrance 36" wide ?	Yes		
Accessible path to play area ?	Yes		
Accessible surface in use zone?	Yes		

#### Notes:

**It is recommended that signs be installed indicating playground rules and general information.**

## STILLMEADOW ELEMENTARY SCHOOL

### AREA #4 CONDITION REPORT

	Condition	Hazard Priority	Recommendation
<b>Small Composite Structure (Miracle Recreation)</b>			
<b>Components</b>			
Spiral Slide	Good		
Stairs (2)	Plastisol cracked & worn at one	Maint.	Monitor
Suspension Bridge	One bolt at deck missing & worn at deck attachment	A	<b>Close bridge and repair</b>
"L" Slide	Good		
Tic Tac Toe Panel	Good		
Look Down Panel	Loose at post bracket	Maint.	Tighten hardware
Transfer Platform	Bubble cracked at bolts Step loose & plastisol worn	Maint. Maint.	Monitor Tighten bolts & monitor plastisol
"S" Crawl Tube	Good		
Tree Climber Spider Climber	Good		
Balcony w/ Steering Wheel Decks (4)	Good		
	One square 48" deck cracked at joints & very worn at Suspension Bridge, bolt pulling through steel	A	<b>Close and Replace one 48" square deck next to suspension bridge</b>
Roofs (2)	Good		
Pipe Barriers	One handhold cracked	B	Replace one section of handhold
Surfacing EWF 3-12"	Insufficient	A	Add EWF & level
	No wear mats at slide exits	C	See Notes
Use Zone	Good		
	Overhanging branches & birds nest in roof	Maint.	Cut back branches to 7ft. from unit & remove birds nest
Structural Stability	Good		

**AREA #4 CONDITION REPORT**

	<b>Condition</b>	<b>Hazard Priority</b>	<b>Recommendation</b>
<b>Freestanding Equipment</b>			
<b>Play Huts w/ Play Panels (2)(Miracle)</b>	Good		
Surfacing	N/A		
Use Zone	N/A		
Structural Stability	Good		
<b>Sand Water Table (Miracle)</b>	Wood fiber debris in table & no sand	Maint.	Clean out debris
Surfacing	N/A		
Use Zone	N/A		
Structural Stability	N/A		
<b>Environment</b>			
Fence	Top rail missing at one section	Maint.	Repair top rail

**Notes:**

**There are no wear mats at the slide exits of the medium composite. ADA requires wear mats for accessibility and the prevention of holes at the slide exits.**

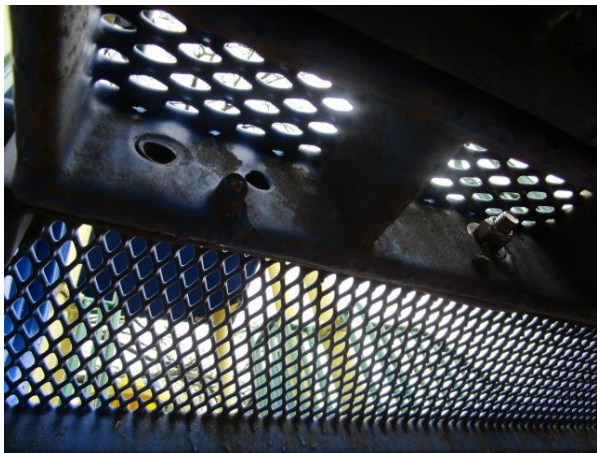
**It is the playground owner's responsibility to maintain the test results for the safety surfacing showing that the depth is appropriate for the fall height of the equipment in the playground.**

**Hazard and Maintenance Pictures**  
**Area #4**

**Small Composite Structure (Miracle Recreation)**  
**Stairs (2) - Plastisol cracked & worn at one - MAINTENANCE**



**Suspension Bridge - One bolt at deck attachment, worn at deck attachment - CLASS A HAZARD**





**Look Down Panel - Loose at post bracket, bubble cracked at bolts - MAINTENANCE**

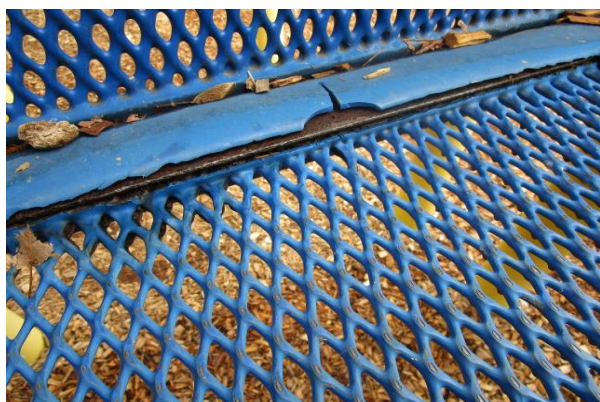
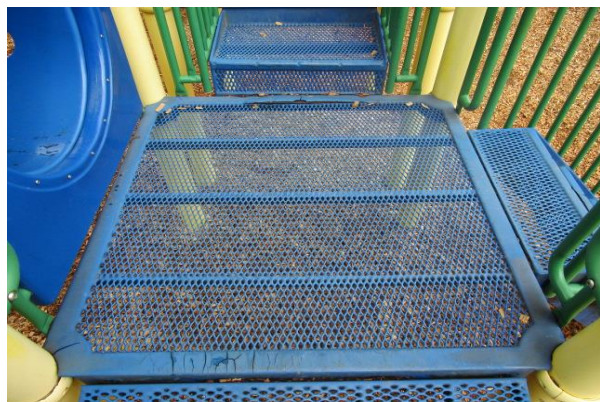




**Transfer Platform - Step loose & plastisol worn - MAINTENANCE**



**Decks (4) - One square 48" deck cracked at joints & very worn at Suspension Bridge, bolts pulling through steel - CLASS A HAZARD**







**Pipe Barriers - One handhold cracked - CLASS B HAZARD**



**Surfacing - No wear mats at slide exits - CLASS C HAZARD**



**Use Zone - Overhanging branches & birds nest in roof - MAINTENANCE**



**Freestanding Equipment**

**Sand Water Table - Wood fiber debris in table, no sand - MAINTENANCE**



**Environment**

**Traffic or Fence hazard - Top rail missing at one section - MAINTENANCE**

