



Playground Maintenance Corp. dba
Playground Medic
146 Broadway
Hawthorne, NY 10532
(914)741-2228 Fax (914)747-3965
Toll Free (866)332-3133
E-mail: info@playgroundmedic.com

PLAYGROUND SAFETY INSPECTION REPORT

DATE: May 8, 2019

SITE: Stillmeadow Elementary School
800 Stillwater Road
Stamford, CT 06907

CLIENT: Stamford Public Schools
Attn: Rich Lyons
888 Washington Boulevard
Stamford, CT 06901

CONTACT PHONE NO. 203-977-4105

DATE OF INSPECTION: April 30, 2019

INSPECTOR: Natale Chionchio
CPSI Certification # 41619-0521
Expiration: 5/1/2021

PURPOSE AND DEFINITIONS

PURPOSE

The purpose of a Playground Safety Inspection is to:

- * Evaluate the overall condition of a playground or playgrounds at a given facility
- * Identify hazardous conditions needing attention
- * Identify Maintenance issues that the owner should be aware of

HAZARD DEFINITIONS

CLASS A HAZARD: Any condition of the playground that is life threatening or could cause severe, permanent disability.

CLASS B HAZARD: Any condition of the playground that could cause a serious but non-disabling injury.

CLASS C HAZARD: Any condition of the playground that can cause a slight injury or any condition that may not cause injury but does not meet either the Guidelines in the CPSC "Handbook for Public Playground Safety" or the ASTM F1487 "Standard Consumer Safety Performance Specifications for Playground Equipment for Public Use."

MAINTENANCE: Repairs needed or recommendations for improvement

STRUCTURAL STABILITY

When properly installed as directed by the manufacturer's instructions and specifications, equipment should withstand the maximum anticipated forces generated by active use which might cause it to overturn, tip, slide or move in any way.

Stability of play equipment is tested by digging around equipment footings and checking for deterioration or signs of movement that would indicate structural instability.

SURFACING

DEPTH: The surfacing under and around the playground equipment can be a major factor in determining the injury causing potential of a fall. A fall onto a shock-absorbing surface is less likely to cause a serious injury than a fall onto a hard compacted surface. Inadequate surfacing material is usually a CLASS A HAZARD depending on the surfacing material.

The depth of surfacing material is checked by digging down to the sub base in heavy wear and low wear areas.

USE ZONE: The surface under and around a piece of equipment onto which a child falling from or exiting from the equipment would be expected to land. These areas are also designated for unrestricted circulation around the equipment.

Use Zone is checked on all equipment by measurements in accordance with CPSC guidelines.

CONDITION EXPLANATION

Equipment and surfacing conditions will be identified as "Good", "Fair" or "Poor". This is a general classification and will indicate:

- Good** * *No Corrective action needed*
- Fair** * *Some corrective action needed*
- Poor** * *Extensive corrective action needed*

**STILLMEADOW ELEMENTARY SCHOOL
Area #1**

Overview

This playground is in poor condition. There are numerous equipment hazards and maintenance issues that should be addressed.

EQUIPMENT INVENTORY

Large Composite Structure



Manufacturer

Landscape Structures



**Freestanding Equipment
Music Panels (2)**



SoundPlay



SURFACING MATERIAL

Poured in Place Rubber

**MANUFACTURER CONTACT
INFORMATION**

Landscape Structures

601 7th Street South

Delano, MN 55328

800-328-0035

www.playlsi.com

SoundPlay

PO Box 115

Parrott, GA 39877

229-623-5545

www.soundplay.com

GENERAL PLAYGROUND ENVIRONMENT

Playground Condition:

POOR

Area # 1

General Site Conditions

| | | <u>Condition</u> | <u>Hazard</u> | <u>Recommendation</u> |
|----|---|-----------------------------|----------------------|------------------------------|
| 1 | Playground Location at Facility Number of footings in area | Back of School 75 | | |
| 2 | Distance from roads and parking lots | 20 feet | | |
| 3 | Fencing-total, partial, height, type | Total | | |
| 4 | Traffic or fence hazard | None | | |
| 5 | Site conditions-level, hill, pitched | Pitched | | |
| 6 | Drainage Problems | None | | |
| 7 | Encroachment of brush or poisonous plants-where | None | | |
| 8 | Bees or insects/animals noted | None | | |
| 9 | Site Amenities-bench, TR, Table Condition | Bench, TR Good | | |
| 10 | Border/Edging-type | Concrete curb & Sidewalk | | |
| 11 | Shade Structure or shade | Roofs & Trees | | |
| 12 | Signage | | | |
| | Age Appropriate Signs/Stickers? | Yes | | |
| | Equipment Age Appropriate, 2-5, 5-12 | 5-12 years | | |
| | Adult Supervision sign or sticker? | Yes | | |
| | Warning Signs installed? | | | |
| | Hard Surface | Yes | | |
| | Heat | Yes | | |
| | Drawstring/Strangulation | Yes | | |

| General Site Conditions | Condition | Hazard | Recommendation |
|--|------------------|---------------|-----------------------|
| Surface Marker signs on uprights? | N/A | | |
| Playground Rules & General Information Sign? | Yes | | |

13 Accessibility

| | | | |
|---------------------------------|-----|--|--|
| Accessible Entrance 36" wide ? | Yes | | |
| Accessible path to play area ? | Yes | | |
| Accessible surface in use zone? | Yes | | |

STILLMEADOW ELEMENTARY SCHOOL

AREA #1 CONDITION REPORT

| | Condition | Hazard Priority | Recommendation |
|---|---|--------------------|--|
| Large Composite Structure (Landscape Structures) | | | |
| Components | | | |
| Ring-A-Ling Overhead Loop Ladder | Good | | |
| Track Ride | Good | | |
| Spider Web Climbers (2) | One handhold not attached | Maint. | Replace one handhold & reattach |
| Ramps (3) | Missing nine bolts at side rails/lip | Maint. | Replace nine bolts at side rail/lip |
| Curved Vertical Loop Ladders (2) | Good | | |
| Pod Climbers (16) | Good | | |
| Swing Out | Good | | |
| Fish Net Climber | Good | | |
| Disc Challenge | One handhold at panel not attached | Maint. | Replace two bolts, reattach & tighten |
| | Three bottom chains worn & one pod missing | B | Replace all bottom chain & one pod with hardware |
| Suspension Bridge | One bolt out of one board | B | Repair one board attachment & replace one bolt. Consult Mfr. |
| Ascending Chain | Cracked & worn | B | Replace chain |
| | Barriers removed | B | Replace two poly side barriers. Consult Mfr. |
| Arch Bridge | Good | | |
| Loop Seats (2) | Good | | |
| Stationary Cycle | Good | | |
| Spring Across Bridge | Head entrapment between rail & Arch Bridge | A | Consult Manufacturer, close gaps |
| Curved Balance Beam | Good | | |
| Loop Pole | Good | | |
| Rollerslide | Good | | |
| Double Wave Climber | Good | | |
| Transfer Platform | Good | | |
| Image Panels (2) | Good | | |
| Hour Glass Panel | Good | | |

AREA #1 CONDITION REPORT

| | Condition | Hazard Priority | Recommendation |
|-----------------------------|--|------------------------|---|
| Wiggle Chain Ladder | Ladder & one handhold detached, chain worn | B | Replace ladder & one bolt at handhold, reattach |
| Entrance Ramp (2) | Trip hazard at three bolts missing at sidewalk | B | Replace three bolts & reattach to sidewalk |
| | Four bolts missing at side rails | Maint. | Replace four bolts at side rails/lip |
| | One section of 5" high side rail missing | C | Replace one section of side rail/lip |
| Fire Pole (1) | Good | | |
| Vertical Rockwall | Non Manufacturer parts, six broken bolt caps | Maint. | Monitor/replace six bolt caps |
| | Two protruding bolts | B | Cut down two bolts and cap |
| Incline Cliff Climber | Chain worn | A | Replace chain |
| Talk Tubes (4) | Good | | |
| Slidewinders (2) | Good | | |
| Log Roll | Good | | |
| Bubble Panel | Good | | |
| Steering Wheel Panel (1) | Good | | |
| Accessible Pilot Panels (2) | Good | | |
| Storefront Panel | Three broken brackets at counter | Maint. | Replace three metal brackets & reattach |
| Roofs (4) | Good | | |
| Decks (13) | Good | | |
| Balcony Decks (9) | Good | | |
| Pipe Barriers | Good | | |
| Wire Barrier (2) | Good | | |
| Periscope Panel | Good | | |
| Metal Benches (5) | Good | | |
| Hole Panel | Good | | |
| Match 4 Panel | Good | | |
| Surfacing PIP 2½ - 3" | PIP dirty, cracked & small holes | Maint. | Clean, repair approx. 25 sq. ft. |
| | Moss covering PIP | Maint. | Clean to remove moss |
| Use Zone | Good | | |
| Structural Stability | Good | | |

AREA #1 CONDITION REPORT

| | Condition | Hazard Priority | Recommendation |
|------------------------------------|---|----------------------------|---|
| Freestanding Equipment | | | |
| Music Panels (2)(SoundPlay) | Four mallets missing | Maint. | Replace four mallets or remove cable & connectors |
| | Sharp steel & four connectors protruding at missing mallets | B | Replace four mallets or remove cable & connectors |
| Surfacing | N/A | | |
| Use Zone | N/A | | |
| Structural Stability | Good | | |

Notes:

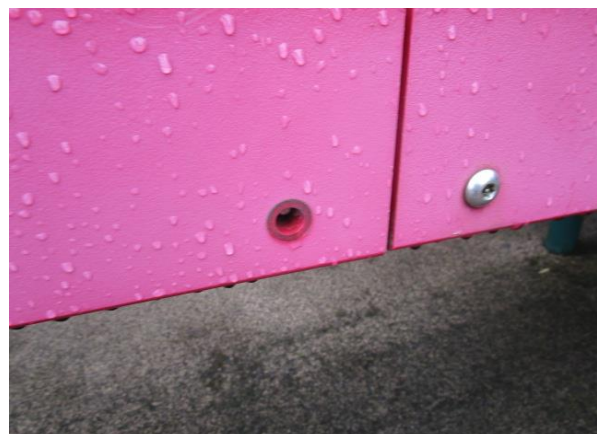
It is the playground owner's responsibility to maintain the test results for the safety surfacing showing that the depth is appropriate for the fall height of the equipment in the playground.

Hazard and Maintenance Pictures
Area #1

Large Composite Structure (Landscape Structures)
Spider Web Climbers (2) - One handhold not attached - MAINTENANCE

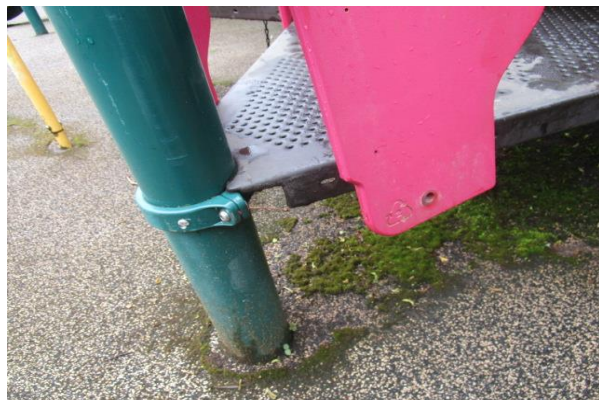


Ramps (3) - Nine bolts missing at side rail/lip - MAINTENANCE





Disc Challenge - One handhold panel not attached - MAINTENANCE



Disc Challenge - Three bottom chains worn - CLASS B HAZARD
One pod missing - CLASS B HAZARD



Suspension Bridge - One bolt out of one board - CLASS B HAZARD



Ascending Chain - Cracked & worn - CLASS B HAZARD
Barriers removed - CLASS B HAZARD

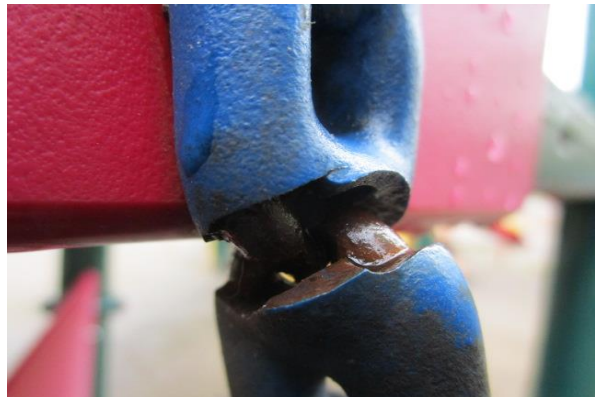


Spring Across Bridge - Head Entrapment between rail & Arch Bridge - CLASS A HAZARD





Wiggle Chain Ladder - Ladder & one handhold detached, chain worn - CLASS B HAZARD



Entrance Ramp (2) - Trip hazard at three bolts missing at sidewalk - CLASS B HAZARD



Entrance Ramp (2) - Four bolts missing at side rails - MAINTENANCE





Entrance Ramp (2) - One section of 5" high rail missing - CLASS C HAZARD



Vertical Rock Wall (2) - Non manufacturer parts, six broken bolt caps - MAINTENANCE

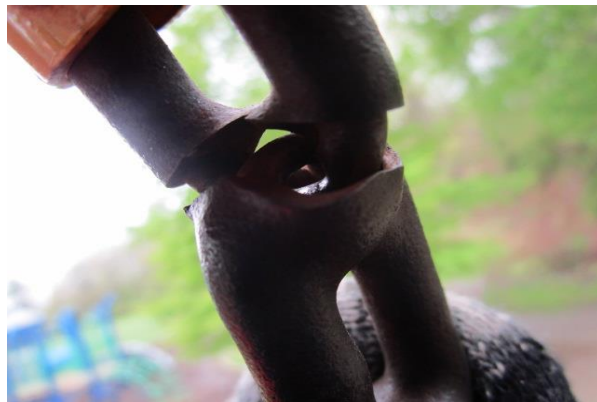




Rockwall (2) - Two protruding bolts - CLASS B HAZARD



Incline Cliff Climber - Chain worn - CLASS A HAZARD



Storefront Panel - Three broken brackets at counter - MAINTENANCE





Surfacing - PIP is dirty, cracked, small holes & moss - MAINTENANCE





**Freestanding Equipment
Music Panels (2)(SoundPlay) - Four mallets missing - MAINTENANCE**



Music Panel (2)(SoundPlay) - Sharp steel & four connectors protruding at missing mallets - CLASS B HAZARD



**STILLMEADOW ELEMENTARY SCHOOL
Area #2**

Overview

This playground is in poor condition. Two of the freestanding units should be removed. All hazards and maintenance issues should be addressed.

EQUIPMENT INVENTORY

Tot Composite Structure

Manufacturer

Landscape Structures



Freestanding Equipment
7ft. Swing Set #1 (1Bay/2Encld.Tot)
Landscape Structures



Multi-Spring See-Saw
Kompan



Rock-It-Cube
Landscape Structures



Bounce Saucer Pad
Landscape Structures



Alligator

SoundPlay



SURFACING MATERIAL

Poured in Place Rubber

**MANUFACTURER CONTACT
INFORMATION**

Landscape Structures

601 7th Street South
Delano, MN 55328
800-328-0035
www.playlsi.com

Kompan / Big Toys

7717 New Market Street
Olympia, WA 98501
800-426-9788

SoundPlay

PO Box 115
Parrott, GA 39877
229-623-5545
www.soundplay.com

GENERAL PLAYGROUND ENVIRONMENT

Playground Condition:

POOR

Area # 2

General Site Conditions

| | | <u>Condition</u> | <u>Hazard</u> | <u>Recommendation</u> |
|----|---|--------------------------------|----------------------|------------------------------|
| 1 | Playground Location at Facility Number of footings in area | Back of School 35 | | |
| 2 | Distance from roads and parking lots | 20 feet | | |
| 3 | Fencing-total, partial, height, type | Total | | |
| 4 | Traffic or fence hazard | None | | |
| 5 | Site conditions-level, hill, pitched | Pitched | | |
| 6 | Drainage Problems | None | | |
| 7 | Encroachment of brush or poisonous plants-where | None | | |
| 8 | Bees or insects/animals noted | None | | |
| 9 | Site Amenities-bench, TR, Table Condition | Bench, TR One bench damaged | Maint. | Replace or remove |
| 10 | Border/Edging-type | Concrete sidewalk | | |
| 11 | Shade Structure or shade | Roof | | |
| 12 | Signage | | | |
| | Age Appropriate Signs/Stickers? | Yes | | |
| | Equipment Age Appropriate, 2-5, 5-12 | 2-5 years | | |
| | Adult Supervision sign or sticker? | Yes | | |
| | Warning Signs installed? | | | |
| | Hard Surface | Yes | | |
| | Heat | Yes | | |
| | Drawstring/Strangulation | Yes | | |

| General Site Conditions | Condition | Hazard | Recommendation |
|--|------------------|---------------|-----------------------|
| Surface Marker signs on uprights? | N/A | | |
| Playground Rules & General Information Sign? | Yes | | |

13 Accessibility

| | | | |
|---------------------------------|-----|--|--|
| Accessible Entrance 36" wide ? | Yes | | |
| Accessible path to play area ? | Yes | | |
| Accessible surface in use zone? | Yes | | |

STILLMEADOW ELEMENTARY SCHOOL

AREA #2 CONDITION REPORT

| | | Condition | Hazard Priority | Recommendation |
|---|-------------|--|--------------------|--|
| Tot Composite Structure (Landscape Structures) | | | | |
| Components | | | | |
| Transfer Platform | | Good | | |
| Pod Climbers (4) | | Good | | |
| Spyro Slide | | Good | | |
| Wiggle Ladder | | Chain worn | B | Replace ladder |
| View Crawl Tube | | Bolt missing | Maint. | Replace bolt |
| | | One burn mark | Maint. | Monitor |
| Double Poly Slide | | Good | | |
| Curved Rung Ladder | | Handhold panel cracked at bolts | Maint. | Replace "Brick" handhold panel |
| Arch Bridge | | Good | | |
| Arthur Rocks Panel | | Good | | |
| Sugar Bowl Panel | | Good | | |
| Storefront Panel | | Good | | |
| Fire Safety Panel | | Good | | |
| Periscope Panel | | Good | | |
| Decks (4) | | Good | | |
| Surfacing | PIP 2½ - 3" | Cracks & holes in rubber | Maint. | Clean, repair approx. 15 sq. ft. |
| Use Zone | | Good | | |
| Structural Stability | | Spyro Slide loose | Maint. | Tighten all hardware |
| Freestanding Equipment | | | | |
| 7ft. Swing Set (1Bay) (Landscape) | | Chains worn at two enclosed tot seats | A | Replace chains at two enclosed tot seats |
| Surfacing | PIP 2½ - 3" | Dirty | Maint. | Clean PIP |
| Use Zone | | Good | | |
| Structural Stability | | Good | | |

AREA #2 CONDITION REPORT

| | | | Condition | Hazard Priority | Recommendation |
|--------------------------------------|-------------|--|--|------------------------|---|
| Multi-Spring See-Saw (Kompan) | | | One seat missing & two back supports missing | Maint. | Close unit Remove if no repairs made |
| | | | One bolt cap cracked | Maint. | |
| | | | One foot rest missing One protrusion at bracket | Maint. A | |
| Surfacing | PIP 2½ - 3" | | Small holes in rubber | Maint. | Repair approx. 3 sq. ft. |
| Use Zone | | | Good | | |
| Structural Stability | | | Wood cracked | Maint. | Close until repaired |

If no repairs are made we recommend removing unit & patch rubber

Rock-It-Cube (Landscape)

Good

Surfacing PIP 2½ - 3" Small holes & rubber dirty Maint. Patch 5 sq.ft. of PIP & clean rubber

Use Zone Good

Structural Stability Good

Bounce Saucer Pad

Top component missing B

Replace component/consult manufacturer

(Landscape)

Surfacing PIP 2½ - 3" Small cracks in rubber Maint. Repair 2 sq.ft.

Use Zone Good

Structural Stability Good

AREA #2 CONDITION REPORT

| | | Condition | Hazard Priority | Recommendation | |
|------------------------------|----------------------|-----------------------------------|------------------------|-----------------------------|---|
| Alligator (SoundPlay) | | Wood broken, cracked & splintered | B | Remove Unit | |
| | | Music component is missing | Maint. | | |
| | Surfacing | None | Insufficient | | B |
| | Use Zone | | No defined use zone | | B |
| | Structural Stability | | Broken | | B |
| Environment | Bench | One bench damaged | Maint. | Replace one bench or remove | |

Notes:

It is the playground owner's responsibility to maintain the test results for the safety surfacing showing that the depth is appropriate for the fall height of the equipment in the playground.

**Hazard and Maintenance Pictures
Area #2**

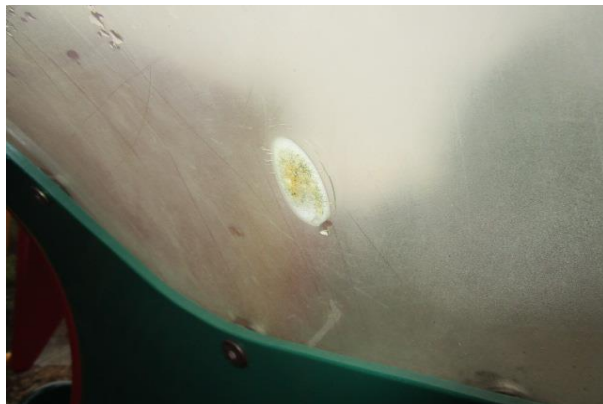
**Tot Composite Structure (Landscape Structures)
Wiggle Ladder - Chain worn - CLASS B HAZARD**



View Crawl Tube - Bolt missing - MAINTENANCE



View Crawl Tube - One burn mark - MAINTENANCE



Curved Rung Ladder - Handhold panel cracked at bolts - MAINTENANCE



Surfacing - Cracks & holes in rubber - MAINTENANCE



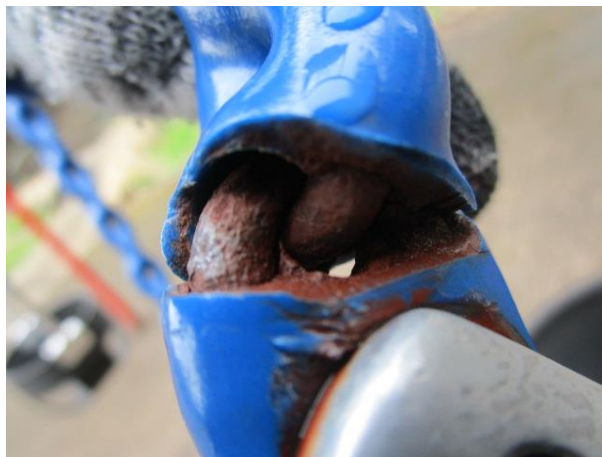
Structural Stability - Spyro Slide loose - MAINTENANCE



Freestanding Equipment

7ft. Swing Set (1Bay)(Landscape) - Chains worn at two enclosed tot seats -

CLASS A HAZARD



Surfacing - Dirty - MAINTENANCE



Multi-Spring See-Saw (Kompan) - One seat missing & two back supports missing - MAINTENANCE



Multi-Spring see-Saw (Kompan) - One bolt cap cracked - MAINTENANCE



Multi-Spring See-Saw - One foot rest missing - MAINTENANCE



Multi-Spring See-Saw - One protrusion at bracket - CLASS A HAZARD



Surfacing - Small holes in rubber - MAINTENANCE





Structural Stability - Wood cracking - MAINTENANCE



Rock-it-Cube (Landscape) - Small holes, rubber dirty - MAINTENANCE

