



Playground Maintenance Corp. dba
Playground Medic
146 Broadway
Hawthorne, NY 10532
(914)741-2228 Fax (914)747-3965
Toll Free (866)332-3133
E-mail: info@playgroundmedic.com

PLAYGROUND SAFETY INSPECTION REPORT

DATE: May 16, 2019

SITE: Northeast Elementary School
82 Scofieldtown Road
Stamford, CT

CLIENT: Stamford Public School
Attention: Rich Lyons
888 Washington Boulevard
Stamford, CT 06901

CONTACT PHONE NO. 203-977-4105

DATE OF INSPECTION: May 1, 2019

INSPECTOR: Natale Chionchio
CPSI Certification # 41619-0521
Expiration: 5/1/2021

PURPOSE AND DEFINITIONS

PURPOSE

The purpose of a Playground Safety Inspection is to:

- * Evaluate the overall condition of a playground or playgrounds at a given facility
- * Identify hazardous conditions needing attention
- * Identify Maintenance issues that the owner should be aware of

HAZARD DEFINITIONS

CLASS A HAZARD: Any condition of the playground that is life threatening or could cause severe, permanent disability.

CLASS B HAZARD: Any condition of the playground that could cause a serious but non-disabling injury.

CLASS C HAZARD: Any condition of the playground that can cause a slight injury or any condition that may not cause injury but does not meet either the Guidelines in the CPSC "Handbook for Public Playground Safety" or the ASTM F1487 "Standard Consumer Safety Performance Specifications for Playground Equipment for Public Use."

MAINTENANCE: Repairs needed or recommendations for improvement

STRUCTURAL STABILITY

When properly installed as directed by the manufacturer's instructions and specifications, equipment should withstand the maximum anticipated forces generated by active use which might cause it to overturn, tip, slide or move in any way.

Stability of play equipment is tested by digging around equipment footings and checking for deterioration or signs of movement that would indicate structural instability.

SURFACING

DEPTH: The surfacing under and around the playground equipment can be a major factor in determining the injury causing potential of a fall. A fall onto a shock-absorbing surface is less likely to cause a serious injury than a fall onto a hard compacted surface. Inadequate surfacing material is usually a CLASS A HAZARD depending on the surfacing material.

The depth of surfacing material is checked by digging down to the sub base in heavy wear and low wear areas.

USE ZONE: The surface under and around a piece of equipment onto which a child falling from or exiting from the equipment would be expected to land. These areas are also designated for unrestricted circulation around the equipment.

Use Zone is checked on all equipment by measurements in accordance with CPSC guidelines.

CONDITION EXPLANATION

Equipment and surfacing conditions will be identified as "Good", "Fair" or "Poor". This is a general classification and will indicate:

- Good** * *No Corrective action needed*
- Fair** * *Some corrective action needed*
- Poor** * *Extensive corrective action needed*

**NORTHEAST ELEMENTARY SCHOOL
Area #1**

Overview

This playground is in fair/poor condition. The hazards and maintenance issues should be addressed. The composite suspension bridge and loop ladder should be closed until replaced.

EQUIPMENT INVENTORY

Large Composite Structure

Manufacturer

GameTime



**Freestanding Equipment
8ft. Swing Set (2 Bay/4Belts)**

GameTime



SURFACING MATERIAL

Engineered Wood Fiber

**MANUFACTURER CONTACT
INFORMATION**

GameTime
PO Box 680121
Ft. Payne, AL 35968-0121
800-633-2394
www.gametime.com

GENERAL PLAYGROUND ENVIRONMENT

Playground Condition:

FAIR/POOR

Area # 1

General Site Conditions

	Condition	Hazard	Recommendation
1	Playground Location at Facility Number of footings in area		
	Back of School 72		
2	Distance from roads and parking lots		
	300 feet		
3	Fencing-total, partial, height, type		
	Total - 4ft. & 6ft. Chain link One section of fence damaged	Maint.	Repair fence
4	Traffic or fence hazard		
	None		
5	Site conditions-level, hill, pitched		
	Level		
6	Drainage Problems		
	None		
7	Encroachment of brush or poisonous plants-where		
	None		
8	Bees or insects/animals noted		
	None		
9	Site Amenities-bench, TR, Table Condition		
	Benches & TR Good		
10	Border/Edging-type Condition of edging		
	Asphalt/Wood Ties Good		
11	Shade Structure or shade		
	Trees		
12	Signage		
	Age Appropriate Signs/Stickers?		Yes
	Equipment Age Appropriate, 2-5, 5-12		5-12 years
	Adult Supervision sign or sticker?		Yes
	Warning Signs installed?		
	Hard Surface		Yes
	Heat		Yes
	Drawstring/Strangulation		Yes

General Site Conditions	Condition	Hazard	Recommendation
Surface Marker signs on uprights?	Yes		
Playground Rules & General Information Sign?	No	Maint.	See Notes
	Two old posts cracking	Maint.	Remove unused sign posts & footings

13 Accessibility

Accessible Entrance 36" wide ?	Yes		
Accessible path to play area ?	No	C	See Notes
Accessible surface in use zone?	Yes		

Notes:

It is recommended that signs be installed indicating playground rules and general information.

An accessible entrance of 36" and a path of 60" are required by ADA to be provided to the play area. If any renovations are done, accessibility should be addressed.

NORTHEAST ELEMENTARY SCHOOL

AREA #1 CONDITION REPORT

	Condition	Hazard Priority	Recommendation
Large Composite Structure - GameTime			
Bigfoot Slide	Good		
Spiral Slide	Good		
Fire Pole (1)	Good		
Suspension Bridge	Bolts at boards bending/stretching steel & attachment plates	B	Close and Replace bridge & hardware
Transfer Platform	Good		
Double Slide	Good		
270 °Overhead Loop Ladder	Missing one loop, four handholds loose at deck	B	Close and Replace Loop Ladder
Chin Up Bar	Good		
Decks (13)	Plastisol wearing at one deck	Maint.	Monitor
Toad Stools (4)	Good		
Tree Climber Pole	Good		
Cork Screw Climber	Good		
Mega Rock Climber	Good		
Cozy Arch Climber	Good		
Bannister Rails	Good		
90° Funnel Bridge	Good		
Inverted Arch Bridge	Good		
Rung Ladders (2)	Good		
Barrier w/ Steering Wheel (1)	Good		
Balcony w/Steering Wheels (1)	Good		
Baseball Panel	Good		
Solar System Panel	Good		
Sign Language Panel	Good		
Zoo Panel	Good		
Bench Seat (1)(below)	Good		
Storefront Panel	Good		
Surfacing	EWF 7-12" Low in spots Rocks & debris in use zone	Maint. Maint.	Top off & level Keep use zone clear of debris/rocks
	No wear mats at slide exits	C	See Notes
Use Zone	Good		
Structural Stability	Good		

AREA #1 CONDITION REPORT

		Condition	Hazard Priority	Recommendation
Freestanding Equipment (GameTime)				
8ft. Swing Set (2Bay/4Belt)		Four belt seats starting to show wear	Maint.	Monitor
Surfacing	EWF 10-12"	Good		
		Exposed wear mats, tripping hazard	B	Bury/level four wear mats
Use Zone		Good		
Structural Stability		Good		
Environment				
Fencing		One section of fence damaged	Maint.	Replace fence
Playground Signs		Two old posts cracking	Maint.	Remove unused sign posts & footings

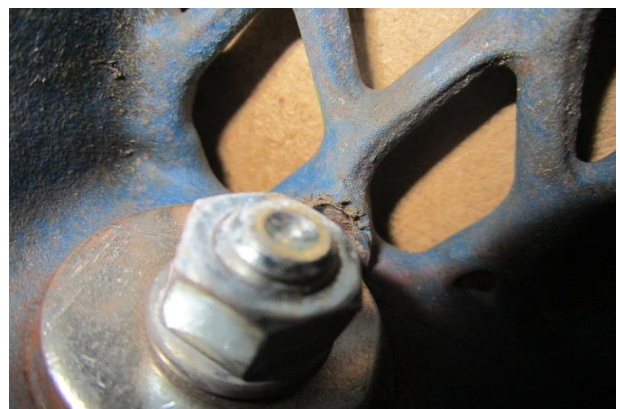
Notes:

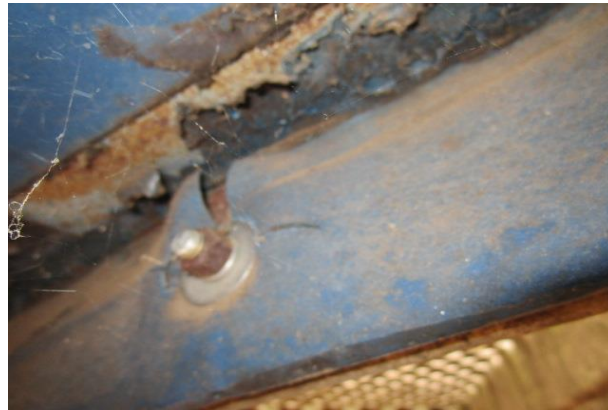
There are no wear mats at the slide exits. ADA requires wear mats for accessibility and the prevention of "holes".

It is the playground owner's responsibility to maintain the test results for the safety surfacing showing that the depth is appropriate for the fall height of the equipment in the playground.

Hazard and Maintenance Pictures
Area #1

Large Composite Structure (GameTime)
Suspension Bridge - Bolts at boards bending/stretching steel & attachment plates -
CLASS B HAZARD





**270° Overhead Loop Ladder - Missing one loop, four handholds loose at deck -
CLASS B HAZARD**





Decks (13) - Plastisol wearing at one deck - MAINTENANCE



Surfacing - Rocks & debris in use zone - MAINTENANCE



Surfacing - No wear mats at slide exits - CLASS C HAZARD



Freestanding Equipment (GT)

8ft. Swing Set (2Bay/4Belt) Four belt seats starting to show wear - MAINTENANCE



Surfacing - Exposed wear mats, tripping hazard - CLASS B HAZARD



Environment

Fencing - One section of fence damaged - MAINTENANCE



Playground Signs - Two old posts cracking - MAINTENANCE





**NORTHEAST ELEMENTARY SCHOOL
Area #2**

Overview

This playground is in fair condition. There are surface hazards and maintenance issues that should be addressed.

EQUIPMENT INVENTORY

Large Composite Structure

Manufacturer

Miracle



Freestanding Equipment
4 Seat Buck-a-Bout
GameTime



Balance Beam
GameTime



8ft. Swing Set (3 Bay/6 Belts)
GameTime



7ft. Swing Set (1 Bay/2 Belts)
GameTime



SURFACING MATERIAL

Engineered Wood Fiber

MANUFACTURER CONTACT INFORMATION

Miracle Recreation

878 Highway 60
Monett, MO 65708
800-523-4202

www.miracle-recreation.com

GameTime

PO Box 680121
Ft. Payne, AL 35968-0121
800-633-2394

www.gametime.com

GENERAL PLAYGROUND ENVIRONMENT

Area # 2

Playground Condition:

FAIR

General Site Conditions

		Condition	Hazard	Recommendation
1	Playground Location at Facility Number of footings in area	Back of School 56		
2	Distance from roads and parking lots	400 feet		
3	Fencing-total, partial, height, type	Total - 4ft. & 6ft. Chain link		
4	Traffic or fence hazard	None		
5	Site conditions-level, hill, pitched	Level		
6	Drainage Problems	None		
7	Encroachment of brush or poisonous plants-where	None		
8	Bees or insects/animals noted	None		
9	Site Amenities-bench, TR, Table Condition	Benches & TR Good		
10	Border/Edging-type Condition of edging	Asphalt & Wood Ties Good		
11	Shade Structure or shade	Trees		
12	Signage			
	Age Appropriate Signs/Stickers?	Yes		
	Equipment Age Appropriate, 2-5, 5-12	5-12 years		
	Adult Supervision sign or sticker?	Yes		
	Warning Signs installed?			
	Hard Surface	Yes		
	Heat	Yes		
	Drawstring/Strangulation	Yes		

General Site Conditions	Condition	Hazard	Recommendation
Surface Marker signs on uprights?	Yes		
Playground Rules & General Information Sign?	No	Maint.	See Notes
13 Accessibility			
Accessible Entrance 36" wide ?	Yes		
Accessible path to play area ?	No	C	See Notes
Accessible surface in use zone?	Yes		

Notes:

It is recommended that signs be installed indicating playground rules and general information.

An accessible entrance of 36" and a path of 60" are required by ADA to be provided to the play area. If any renovations are done, accessibility should be addressed.

NORTHEAST ELEMENTARY SCHOOL

AREA #2 CONDITION REPORT

		Condition	Hazard Priority	Recommendation
Large Composite Structure (Miracle)				
Spiral Slide		Three cracked caps below bed way & two missing caps below hood	Maint.	Replace three bed-way caps (below) & two entry hood caps (below)
Arch Bridge		Good		
Transfer Station		Good		
Wide Slide		Good		
Fire Pole (1)		Good		
Inverted Arch Ladder		Good		
Bumper Ladder		Two bolts missing	Maint.	Replace two bolts
Single Straight Slide		Good		
Suspension Bridge		Good		
Rung Ladders (2)		Good		
Corkscrew Climber		Good		
Steering Wheels (3)		Three steering wheels loose	Maint.	Tighten three bolts
Decks (13)		Good		
Barrier Rails		One set screw missing at handhold near Spiral Slide Access step	Maint.	Replace one set screw at bracket
Surface	EWF 4-12"	Insufficient No wear mats at slide exits	A C	Add EWF & level See Notes
Use Zone		Good		
Structural Stability		Good		
Freestanding Equipment				
8ft. Swing Set #1 (3Bay/6Belt)(GT)		Six belt seats starting to wear	Maint.	Monitor
Surface	EWF 5-8"	Insufficient Exposed wear mats, tripping hazard	A B	Add EWF & level Bury/level six wear mats

AREA #2 CONDITION REPORT

	Condition	Hazard Priority	Recommendation
Use Zone	Good		
	Overhanging branches in rear use zone	Maint.	Cut back branches in rear use zone
Structural Stability	Good		
4 Seat Buck-A-Bout (GameTime)	Spring slightly loose at footing	Maint.	Monitor
Surface EWF 10-12"	Good		
Use Zone	Good		
Structural Stability	Good		
Balance Beam (GameTime)	Good		
Surface EWF 10-12"	Good		
Use Zone	Good		
Structural Stability	Good		
7ft. Swing Set (1 Bay/2 Belts) (GameTime)	Good		
Surfacing EWF 9-10"	Good		
Use Zone	Inadequate at 13ft. in back	C	Extend use zone to 14ft. at back
Structural Stability	Good		

Notes:

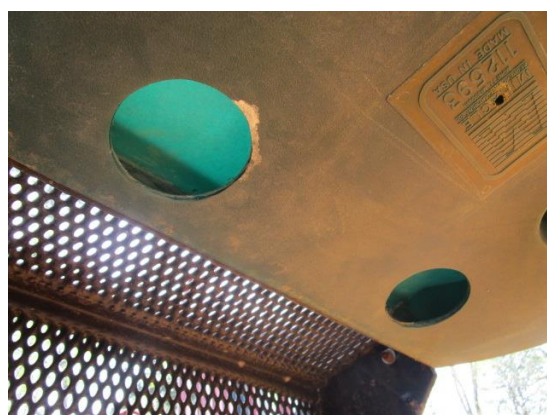
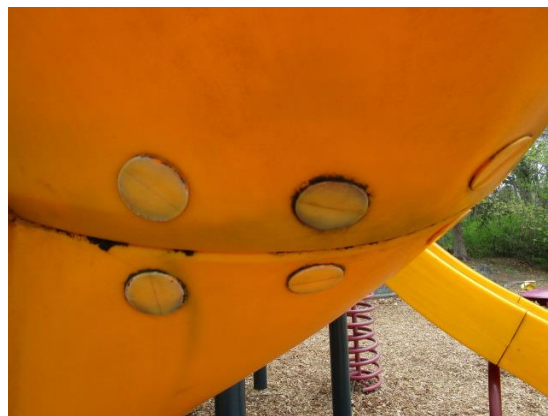
There are no wear mats at the slide exits. ADA requires wear mats for accessibility and the prevention of "holes".

It is the playground owner's responsibility to maintain the test results for the safety surfacing showing that the depth is appropriate for the fall height of the equipment in the playground.

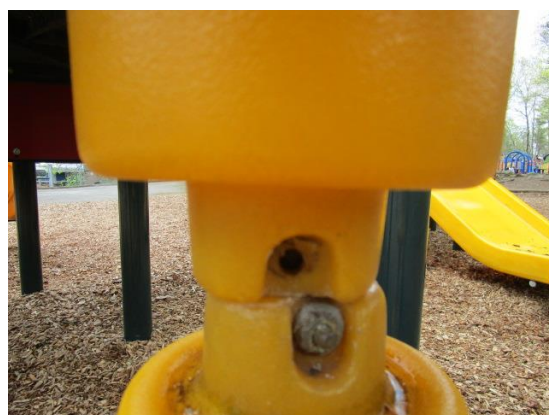
**Hazard and Maintenance Pictures
Area #2**

Large Composite Structure - Miracle

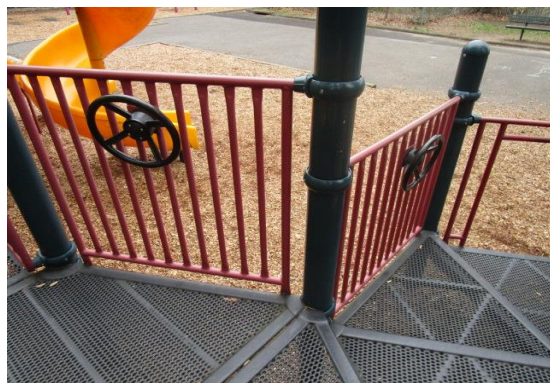
**Spiral Slide - Three cracked caps below bed way & two missing caps below hood -
MAINTENANCE**



Bumper Ladder - Two bolts missing - MAINTENANCE



Steering Wheels - (3) - Three steering wheels loose - MAINTENANCE



**Barrier Rails - One set screw missing at handhold near Spiral Slide Access step -
MAINTENANCE**



Surfacing - No wear mats at slide exits - CLASS C HAZARD



Freestanding Equipment

8ft. Swing Set (3Bay/6Belt)(GT) - Six belt seats starting to wear - MAINTENANCE



8ft. Swing Set (3Bay/Belts) - Exposed wear mats tripping hazard - CLASS B HAZARD



Use Zone - Overhanging branches in rear use zone - MAINTENANCE



4 Seat Buck-a-Bout (GameTime) - Springs slightly loose at footing - MAINTENANCE



7ft. Swing Set (1Bay/2Belts)(GT) - Inadequate use zone at 13ft. In back - CLASS C HAZARD

