



Playground Maintenance Corp. dba
Playground Medic
146 Broadway
Hawthorne, NY 10532
(914)741-2228 Fax (914)747-3965
Toll Free (866)332-3133
E-mail: info@playgroundmedic.com

PLAYGROUND SAFETY INSPECTION REPORT

DATE: September 27, 2019

SITE: Kosciuzko Park (Elmcroft/Westover)
1 Elmcroft Road
Stamford, CT 06902

CLIENT: Viking Construction, Inc.
Attn: JoAnn Michaels
1387 Seaview Avenue
Bridgeport, CT 06607

CONTACT PHONE NO. 203-353-0260

DATE OF INSPECTION: September 20, 2019

INSPECTOR: Natale Chionchio
CPSI Certification # 41619-0521
Expiration: 5/1/2021

PURPOSE AND DEFINITIONS

PURPOSE

The purpose of a Playground Safety Inspection is to:

- * Evaluate the overall condition of a playground or playgrounds at a given facility
- * Identify hazardous conditions needing attention
- * Identify Maintenance issues that the owner should be aware of

HAZARD DEFINITIONS

CLASS A HAZARD: Any condition of the playground that is life threatening or could cause severe, permanent disability.

CLASS B HAZARD: Any condition of the playground that could cause a serious but non-disabling injury.

CLASS C HAZARD: Any condition of the playground that can cause a slight injury or any condition that may not cause injury but does not meet either the Guidelines in the CPSC "Handbook for Public Playground Safety" or the ASTM F1487 "Standard Consumer Safety Performance Specifications for Playground Equipment for Public Use."

MAINTENANCE: Repairs needed or recommendations for improvement

STRUCTURAL STABILITY

When properly installed as directed by the manufacturer's instructions and specifications, equipment should withstand the maximum anticipated forces generated by active use which might cause it to overturn, tip, slide or move in any way.

Stability of play equipment is tested by digging around equipment footings and checking for deterioration or signs of movement that would indicate structural instability.

SURFACING

DEPTH: The surfacing under and around the playground equipment can be a major factor in determining the injury causing potential of a fall. A fall onto a shock-absorbing surface is less likely to cause a serious injury than a fall onto a hard compacted surface. Inadequate surfacing material is usually a CLASS A HAZARD depending on the surfacing material.

The depth of surfacing material is checked by digging down to the sub base in heavy wear and low wear areas.

USE ZONE: The surface under and around a piece of equipment onto which a child falling from or exiting from the equipment would be expected to land. These areas are also designated for unrestricted circulation around the equipment.

Use Zone is checked on all equipment by measurements in accordance with CPSC guidelines.

CONDITION EXPLANATION

Equipment and surfacing conditions will be identified as "Good", "Fair" or "Poor". This is a general classification and will indicate:

- Good** * *No Corrective action needed*
- Fair** * *Some corrective action needed*
- Poor** * *Extensive corrective action needed*

Kosciuszko Park (Elmcroft/Westover)

Overview

This playground is in fair condition. There are surfacing hazards and maintenance issues to address.

EQUIPMENT INVENTORY

Small Metal Composite Structure

Manufacturer

GameTime





Large Metal Composite Structure

GameTime





Freestanding Equipment
8ft. Swing Set #1 (2Bay/4Enc. Tot)

GameTime



8ft. Swing Set #2 (2Bay/4Belts)



GameTime



SURFACING MATERIAL

Engineered Wood Fiber

**MANUFACTURER CONTACT
INFORMATION**

GameTime
PO Box 680121
Ft. Payne, AL 35968-0121
800-633-2394
www.gametime.com

GENERAL PLAYGROUND ENVIRONMENT

Playground Condition:

FAIR

General Site Conditions	<u>Condition</u>	<u>Hazard</u>	<u>Recommendation</u>
1 Playground Location at Facility Number of footings in area	Across from school, rear right side of park 78		
2 Distance from roads and parking lots	40 feet		
3 Fencing-total, partial, height, type	Total - 4ft. Chain link		
4 Traffic or fence hazard	None		
5 Site conditions-level, hill, pitched	Level		
6 Drainage Problems	None		
7 Encroachment of brush or poisonous plants-where	None		
8 Bees or insects/animals noted	None		
9 Site Amenities-bench, TR, Table Condition	Benches, TR Two benches damaged	Maint.	Repair or replace two benches
10 Border/Edging-type Condition of edging	Concrete curb Good		
11 Shade structure or shade	Roofs & Shade Pavilion		
12 Signage Age Appropriate Signs/Stickers?	Yes		
Equipment Age Appropriate, 2-5, 5-12	2-5, 2-12, 5-12 yrs.		
Adult Supervision sign or sticker?	Yes		
Warning Signs installed? Hard Surface	Yes		
Heat	Yes		
Drawstring/Strangulation	Yes		

General Site Conditions	<u>Condition</u>	<u>Hazard</u>	<u>Recommendation</u>
Surface Marker signs on uprights?	Yes		
Playground Rules & General Information Sign?	No	Maint.	See Notes
13 Accessibility			
Accessible Entrance 36" wide ?	Yes		
Accessible path 60" wide to play area ?	No	C	See Notes
Accessible surface in use zone?	Yes		

Notes:

It is recommended that signs be installed indicating playground rules and general information.

An accessible entrance of 36" and a path of 60" are required by ADA to be provided to the play area. If any renovations are done, accessibility should be addressed.

Kosciuszko Park (Elmcroft/Westover)

CONDITION REPORT

		Condition	Hazard Priority	Recommendation
Small Metal Composite Structure #1(GameTime)				
Components				
Accessible Stairs (1)		Good		
Decks (9)		Good		
Roof (1)		Good		
Pipe Barriers		Good		
Zoo Panel		Good		
Suspension Bridge		Good		
Little Foot Slide		Bed way has gouges from animal bites	Maint	Monitor
Shapes Panel		Good		
Crawl Tube		Cracked at two bolts	Maint.	Monitor
Curved Slide		Good		
Rung Ladder		Good		
Clover Climber		Good		
Slide & Glide Slide		Good		
Storefront (below)		Good		
Surfacing	EWF 9-12"	Good		
		Wear mats at Little Foot Slide buried too deep	Maint.	Raise & level mats
Use Zone		Good		
Structural Stability		Good		
Large Metal Composite Structure #2(GameTime)				
Components				
Transfer Platform		Good		
Decks (5)		Good		
Stairs (1)		Good		
Roofs (1)		Good		
Pipe Barriers		Good		
Trapeze Rings (4)		Good		
Rung Ladder (3)		Good		
Arch Bridge w/ Barriers		Good		
Toad Stool (1)		Good		
"S" Horizontal Loop		Good		
Ladder				

CONDITION REPORT

		Condition	Hazard Priority	Recommendation
Crunch Bar (1)		Good		
Braille/Sign Language Panel		Good		
Mega Rock Climber		One bolt cap missing	Maint.	Replace one cap
360° Spiral Slide		Good		
Steering Wheel		Good		
Bug Eye Panel		Good		
Single Access Step (1)		Good		
DNA Climber		Good		
Bigfoot Slide		Large crack in center of bed way	Maint.	Monitor closely & schedule replacement
Storefront (below)		Good		
Double Seat w/ Rail (below)		Good		
Surfacing	EWF 4-12"	Low in spots No wear mat at Spiral Slide exit	B C	Top off & level See Notes
Use Zone		Good		
Structural Stability		Good		
Freestanding Equipment				
8ft. Swing Set #1 (2Bay/4Enc.Tot) (GameTime)		Good		
Surfacing	EWF 8-12"	Low in spots	Maint.	Rake to level
Use Zone		Good		
Structural Stability		Good		

CONDITION REPORT

		Condition	Hazard Priority	Recommendation
8ft. Swing Set #2 (2Bay/4Belts)		Four belt seats starting to show wear	Maint.	Monitor closely
(GameTime)				
Surfacing	EWf 2-12"	Insufficient under swings	A	Top off & level
		One wear mat missing	C	See Notes
		Exposed fabric, tripping hazard	B	Bury under EWf
Use Zone		Good		
Structural Stability		Good		

Environment

Site Amenities	Two benches damaged	Maint.	Repair or replace two benches
-----------------------	---------------------	--------	-------------------------------

Notes:

There are no wear mats at the slide exits. ADA requires wear mats for accessibility and the prevention of holes at the slide exits.

There are no wear mats under the swing seats. ADA requires wear mats for accessibility and the prevention of "holes" under the swings.

It is the playground owner's responsibility to maintain the test results for the safety surfacing showing that the depth is appropriate for the fall height of the equipment in the playground.

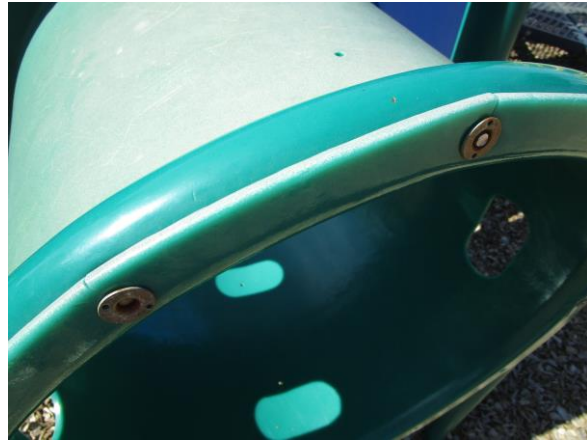
Hazard and Maintenance Pictures

Small Metal Composite Structure #1 (GameTime)

Little Foot Slide - Bed way has gouges from animal bites - MAINTENANCE



Crawl Tube - Cracked at two bolts - MAINTENANCE



Surfacing - Wear mats at Little Foot Slide buried too deep - MAINTENANCE



**Large Metal Composite Structure #2 (GameTime)
Mega Rock Climber - One bolt cap missing - MAINTENANCE**



Big Foot Slide - Large crack in center of bed way - MAINTENANCE





Surfacing - No wear mat at Spiral Slide exit - CLASS C HAZARD



8ft. Swing Set #2 (2Bay/4Belts) (GameTime) - Four belt seats starting to show wear - MAINTENANCE



Surfacing - One wear mat missing - CLASS C HAZARD



Surfacing - Exposed fabric, tripping hazard - CLASS B HAZARD



Environment

Site Amenities - Two benches damaged - MAINTENANCE

