



Playground Maintenance Corp. dba
Playground Medic
146 Broadway
Hawthorne, NY 10532
(914)741-2228 Fax (914)747-3965
Toll Free (866)332-3133
E-mail: info@playgroundmedic.com

PLAYGROUND SAFETY INSPECTION REPORT

DATE: May 16, 2019

SITE: Davenport Ridge Elementary School
1300 Newfield Avenue
Stamford, CT 06905

CLIENT: Stamford Public Schools
Attention: Rich Lyons
888 Washington Boulevard
Stamford, CT 06901

CONTACT PHONE NO. 203-977-4105

DATE OF INSPECTION: April 24, 2019

INSPECTOR: Natale Chionchio
CPSI Certification # 41619-0521
Expiration: 5/1/2021

PURPOSE AND DEFINITIONS

PURPOSE

The purpose of a Playground Safety Inspection is to:

- * Evaluate the overall condition of a playground or playgrounds at a given facility
- * Identify hazardous conditions needing attention
- * Identify Maintenance issues that the owner should be aware of

HAZARD DEFINITIONS

CLASS A HAZARD: Any condition of the playground that is life threatening or could cause severe, permanent disability.

CLASS B HAZARD: Any condition of the playground that could cause a serious but non-disabling injury.

CLASS C HAZARD: Any condition of the playground that can cause a slight injury or any condition that may not cause injury but does not meet either the Guidelines in the CPSC "Handbook for Public Playground Safety" or the ASTM F1487 "Standard Consumer Safety Performance Specifications for Playground Equipment for Public Use."

MAINTENANCE: Repairs needed or recommendations for improvement

STRUCTURAL STABILITY

When properly installed as directed by the manufacturer's instructions and specifications, equipment should withstand the maximum anticipated forces generated by active use which might cause it to overturn, tip, slide or move in any way.

Stability of play equipment is tested by digging around equipment footings and checking for deterioration or signs of movement that would indicate structural instability.

SURFACING

DEPTH: The surfacing under and around the playground equipment can be a major factor in determining the injury causing potential of a fall. A fall onto a shock-absorbing surface is less likely to cause a serious injury than a fall onto a hard compacted surface. Inadequate surfacing material is usually a CLASS A HAZARD depending on the surfacing material.

The depth of surfacing material is checked by digging down to the sub base in heavy wear and low wear areas.

USE ZONE: The surface under and around a piece of equipment onto which a child falling from or exiting from the equipment would be expected to land. These areas are also designated for unrestricted circulation around the equipment.

Use Zone is checked on all equipment by measurements in accordance with CPSC guidelines.

CONDITION EXPLANATION

Equipment and surfacing conditions will be identified as "Good", "Fair" or "Poor". This is a general classification and will indicate:

- Good** * *No Corrective action needed*
- Fair** * *Some corrective action needed*
- Poor** * *Extensive corrective action needed*

**DAVENPORT RIDGE ELEMENTARY SCHOOL
Area #1**

Overview

This playground is in fair condition. There is an equipment hazard and a surface hazard and there are maintenance issues to address.

EQUIPMENT INVENTORY

Metal Composite Structure

Manufacturer

GameTime



Freestanding Equipment
Toss N Score

GameTime



SURFACING MATERIAL

Engineered Wood Fiber

**MANUFACTURER CONTACT
INFORMATION**

GameTime
PO Box 680121
Ft. Payne, AL 35968-0121
800-633-2394
www.gametime.com

GENERAL PLAYGROUND ENVIRONMENT

Playground Condition:

FAIR

Area # 1

General Site Conditions

		Condition	Hazard	Recommendation
1	Playground Location at Facility	East Side of School		
	Number of footings in area	60		
2	Distance from roads and parking lots	200 feet		
3	Fencing-total, partial, height, type	Partial - 4ft. Chain link		
4	Traffic or fence hazard	None		
5	Site conditions-level, hill, pitched	Level		
6	Drainage Problems	None		
7	Encroachment of brush or poisonous plants-where	None		
8	Bees or insects/animals noted	None		
9	Site Amenities-bench, TR, Table	Benches, Picnic Table		
	Condition	Good		
10	Border/Edging-type	Wood Ties		
	Condition of edging	Good		
11	Shade Structure or shade	Trees		
12	Signage			
	Age Appropriate Signs/Stickers?	Yes		
	Equipment Age Appropriate, 2-5, 5-12	5-12 years		
	Adult Supervision sign or sticker?	Yes		
	Warning Signs installed?			
	Hard Surface	Yes		
	Heat	Yes		
	Drawstring/Strangulation	Yes		

General Site Conditions	Condition	Hazard	Recommendation
Surface Marker signs on uprights?	Yes		
Playground Rules & General Information Sign?	No	Maint.	See Notes
13 Accessibility			
Accessible Entrance 36" wide ?	No - 24"	C	See Notes
Accessible path to play area ?	No	C	See Notes
Accessible surface in use zone?	Yes		

Notes:

It is recommended that signs be installed indicating playground rules and general information.

An accessible entrance of 36" and a path of 60" are required by ADA to be provided to the play area. If any renovations are done, accessibility should be addressed.

DAVENPORT RIDGE ELEMENTARY SCHOOL

AREA #1 CONDITION REPORT

		Condition	Hazard Priority	Recommendation
Metal Composite Structure (GameTime)				
Components				
Transfer Platform		Good		
Swift Rider Slide		Small cracks in bed way	Maint.	Monitor
90° Crawl Tube		Good		
Criss Cross Overhead		Good		
Loop Ladder				
Crazy Eight Climber		Good		
Tube Slide		Good		
Chain Net Climber		Plastisol cracked	Maint.	Monitor
Tree Climber Link		Dent in pipe	Maint.	Monitor
Corkscrew Climber		Good		
Tunnel Up Crawl Tube		Large cracks at top of one section	B	Replace one section
Spiral Slide		Good		
Zipper Climber		Good		
90° Funnel Bridge		Good		
Wavy Tree Climber		Good		
Slide with Tunnel		One bolt missing at bracket	Maint.	Install one bolt at bracket/post
Mega Rock Climber		Good		
Mini Arch Bridge		Good		
Toad Stool Climber (1)		Loose in footing	Maint.	Monitor
Bug Eye Bubble Panel		Good		
Sign Language Panel		Good		
Zoo Panels (2)		Good		
States Panel		Good		
Bubble Panel		Small gouges	Maint.	Monitor
Decks (9)		Good		
Surfacing	EWF 0-12"	Insufficient	A	Add EWF & level
		No wear mats at slide exits	C	See Notes
Use Zone		Good		
Structural Stability		Good		

AREA #1 CONDITION REPORT

Condition	Hazard Priority	Recommendation
------------------	----------------------------	-----------------------

Notes:

There are no wear mats at the slide exits. ADA requires wear mats for accessibility and the prevention of holes at the slide exits.

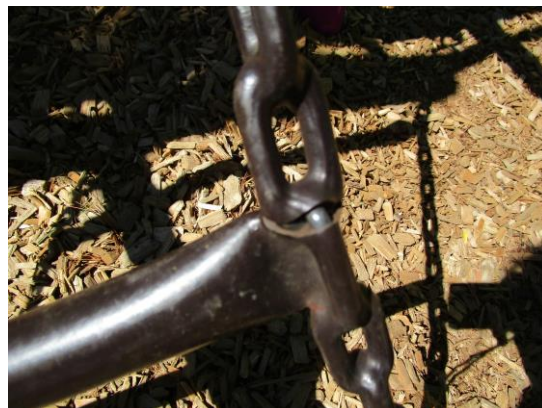
It is the playground owner's responsibility to maintain the test results for the safety surfacing showing that the depth is appropriate for the fall height of the equipment in the playground.

**Hazard and Maintenance Pictures
Area #1**

**Metal Composite Structure (GameTime)
Swift Rider Slide - Small cracks in bed way - MAINTENANCE**



Chain Net Climber - Plastisol cracked - MAINTENANCE



Tree Climber Link - Dent in pipe - MAINTENANCE



Tunnel Up Crawl Tube - Large cracks at top of one section - CLASS B HAZARD



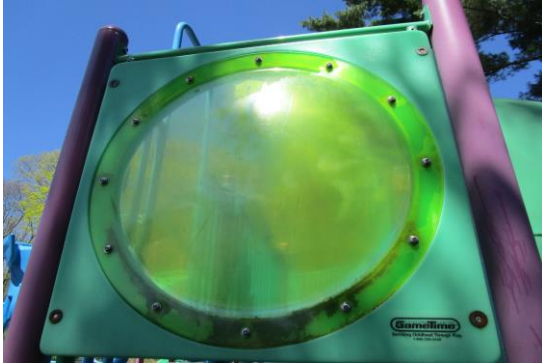
Slide with Tunnel - One bolt missing at bracket - MAINTENANCE



Toad Stool Climber (1) - Loose in footing - MAINTENANCE



Bubble Panel - Small gauges - MAINTENANCE



Surfacing - No wear mats at slide exits - CLASS C HAZARD



**DAVENPORT RIDGE ELEMENTARY SCHOOL
Area #2**

Overview

This playground is in fair condition except for the Fire Truck Climber. The Climber should not be used until surfacing is installed.

EQUIPMENT INVENTORY

Composite Structure

Manufacturer

Landscape Structures



Freestanding Equipment
Curved Balance Beam



Landscape Structures

Rainbow Climber



Landscape Structures



Fire Truck Climber



Landscape Structures



SURFACING MATERIAL

Engineered Wood Fiber

**MANUFACTURER CONTACT
INFORMATION**

Landscape Structures

601 7th Street South

Delano, MN 55328

800-328-0035

www.playlsi.com

GENERAL PLAYGROUND ENVIRONMENT

Area # 2

Playground Condition:

FAIR/POOR

General Site Conditions

	Condition	Hazard	Recommendation
1	Playground Location at Facility Number of footings in area	school 38	
2	Distance from roads and parking lots	200 feet	
3	Fencing-total, partial, height, type	Partial - 4ft. Chain link	
4	Traffic or fence hazard	None	
5	Site conditions-level, hill, pitched	Level	
6	Drainage Problems	None	
7	Encroachment of brush or poisonous plants-where	None	
8	Bees or insects/animals noted	None	
9	Site Amenities-bench, TR, Table Condition	Benches Crack in bench slats	Maint. Repair or replace two slates
10	Border/Edging-type Condition	Asphalt Poor, edges cracked & uneven	Maint. Repair 25sq.ft. of asphalt
11	Shade Structure or shade	Roof	
12	Signage		
	Age Appropriate Signs/Stickers?	Yes	
	Equipment Age Appropriate, 2-5, 5-12	5-12 years	
	Adult Supervision sign or sticker?	Yes	
	Warning Signs installed?		
	Hard Surface	Yes	
	Heat	Yes	
	Drawstring/Strangulation	Yes	

General Site Conditions	Condition	Hazard	Recommendation
Surface Marker signs on uprights?	Yes		
Playground Rules & General Information Sign?	No	Maint.	See Notes
13 Accessibility			
Accessible Entrance 36" wide ?	Yes		
Accessible path to play area ?	Yes		
Accessible surface in use zone?	Yes		

Notes:

It is recommended that signs be installed indicating playground rules and general information.

DAVENPORT RIDGE ELEMENTARY SCHOOL

AREA #2 CONDITION REPORT

		Condition	Hazard Priority	Recommendation
Metal Composite Structure (Landscape Structures)				
Components				
Transfer Platform		Deck not level	Maint.	Monitor
		Handhold plate loose	Maint.	Tighten bolts at bracket
Stairs (1)		Good		
Double Slide		Good		
Summit Climber		Graffiti on hand hold by Summit Climber	Maint.	Remove graffiti
Sidewinder Slide		Good		
Horizontal Ladder		Good		
Benches (2)		Good		
Pod Step Climbers (4)		Good		
Wheel Swing Out		Good		
Roof (1)		Good		
Decks (4)		Good		
	Surfacing EWF 4-9"	Insufficient No wear mats at slide exits	A C	Add EWF & level See Notes
	Use Zone	Good		
	Structural Stability	Good		
Freestanding Equipment				
Curved Balance Beam (Landscape)				
		Good		
	Surfacing EWF 6-8"	Good		
	Use Zone	Good		
	Structural Stability	Post bent	Maint.	Replace if desired

AREA #2 CONDITION REPORT

		Condition	Hazard Priority	Recommendation
Rainbow Climber (Landscape)		Good		
Surfacing	EWF 9-10"	Good		
Use Zone		Good		
Structural Stability		Good		
Fire Truck Climber (Landscape)		Cracked at bolt of rung access panel	Maint.	Monitor
Surfacing	0"	Insufficient Rocks in surface	A	Add 9-12" of EWF
		No wear mat at slide exit	A C	Remove rocks See Notes
Use Zone		Inadequate, no clear use zone	A	Create a clear 6ft. use zone & add 9-12" of EWF around unit
Structural Stability		Unit leaning slightly	Maint.	Monitor
		One headlight & support bent	Maint.	Monitor

*** This climber should not be used until surfacing installed ***

Environment

Site Amenities	Cracks in bench seats	Maint.	Repair or replace two slats
Border/Edging	Asphalt edges cracked & uneven	Maint.	Repair asphalt

Notes:

There are no wear mats at the slide exits. ADA requires wear mats for accessibility and the prevention of holes at the slide exits.

It is the playground owner's responsibility to maintain the test results for the safety surfacing showing that the depth is appropriate for the fall height of the equipment in the playground.

**Hazard and Maintenance Pictures
Area #2**

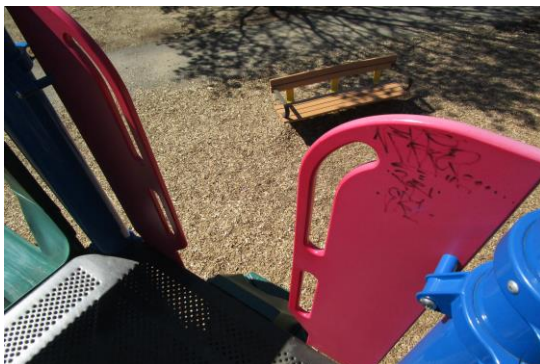
**Metal Composite Structure (Landscape Structures)
Transfer Platform - Deck not level - MAINTENANCE**



Transfer Platform - Handhold plate loose - MAINTENANCE



Summit Climber - Graffiti on one handhold - MAINTENANCE



Freestanding Equipment

Curved Balance Beam (Landscape) - Post is bent - MAINTENANCE



Fire Truck Climber (Unknown) - Crack at bolt of rung access panel - MAINTENANCE



Surfacing - Insufficient, & rocks in surfacing - CLASS A HAZARD





Surfacing - No wear mat at slide exit - CLASS C HAZARD



Use Zone - Inadequate, no clear use zone - CLASS A HAZARD



**Structure Stability - Unit leaning slightly & one headlight & support bent -
MAINTENANCE**



Environment

Site Amenities - Cracks in bench seats - MAINTENANCE



Border/Edging - Asphalt cracked & uneven - MAINTENANCE



**DAVENPORT RIDGE ELEMENTARY SCHOOL
Area #3**

Overview

This playground is in fair to poor condition. There are equipment and surface hazards and maintenance issues. The swings should not be used until surface is installed and repairs are made

EQUIPMENT INVENTORY

Small Composite Structure



**Manufacturer
Playworld Systems**



Large Composite Structure



Play & Park Structures





Freestanding Equipment
Toss Up

Playworld Systems



Coaster Climber



GameTime



Space Shuttle



GameTime



8ft. Swing Set (2 Bays/4 Belt Seats)



Playworld Systems



SURFACING MATERIAL

Engineered Wood Fiber

**MANUFACTURER CONTACT
INFORMATION**

Playworld Systems

1000 Buffalo Road
Lewisburg, PA 17837
800-233-8404

www.playworldsystems.com

GameTime

PO Box 680121
Ft. Payne, AL 35968-0121
800-633-2394

www.gametime.com

Play & Park Structures

430 Chestnut Street, #300
Chattanooga, TN 37402
888-404-5737

www.parkstructures.com

GENERAL PLAYGROUND ENVIRONMENT

Area # 3

General Site Conditions

Playground Condition:

FAIR/POOR

	Condition	Hazard	Recommendation
1	Playground Location at Facility Number of footings in area	West side of building 97	
2	Distance from roads and parking lots	400 feet	
3	Fencing-total, partial, height, type	Partial - 4ft. Chain link Temporary construction fencing	
4	Traffic or fence hazard	None	
5	Site conditions-level, hill, pitched	Level	
6	Drainage Problems	None	
7	Encroachment of brush or poisonous plants-where	None	
8	Bees or insects/animals noted	None	
9	Site Amenities-bench, TR, Table Condition	Picnic Table Good	
10	Border/Edging-type Condition of edging	Asphalt & Plastic timbers Timbers good Asphalt fair	
11	Shade Structure or shade	Roofs, trees	
12	Signage		
	Age Appropriate Signs/Stickers?	Yes	
	Equipment Age Appropriate, 2-5, 5-12	5-12 years	
	Adult Supervision sign or sticker?	Yes	
	Warning Signs installed?		
	Hard Surface	Yes	
	Heat	Yes	
	Drawstring/Strangulation	Yes	

General Site Conditions	Condition	Hazard	Recommendation
Surface Marker signs on uprights?	Yes		
Playground Rules & General Information Sign?	No	Maint.	See Notes

13 Accessibility

Accessible Entrance 36" wide ?	Yes		
Accessible path to play area ?	Yes		
Accessible surface in use zone?	Yes		

Notes:

It is recommended that signs be installed indicating playground rules and general information.

DAVENPORT RIDGE ELEMENTARY SCHOOL

AREA #3 CONDITION REPORT

		Condition	Hazard Priority	Recommendation
Small Composite Structure (Playworld Systems)				
Components				
Transfer Platform		Plastisol torn off at stairs	Maint.	Replace transfer platform/stairs combo
Long Glide Slide		Small cracks in bed way	Maint.	Monitor
Double Rock & Rumble Slide		Good		
Deep Rung Arch Ladder		Good		
Tic-Tac-Toe Panel		Good		
Small Glide Slide		Good		
U Bounce		Rubber step worn & one pipe cap missing	Maint.	Replace step & one metal cap at pipe
Sky Rocker		Very tight	Maint.	Lubricate
Challenge Walk Balance Beam		Good		
Rock N Roll Bars		Good		
Monorail		Good		
Decks (3)		Good		
Roof (1)		Good		
Surfacing	EWF 3-9"	Insufficient	A	Add EWF & level
		No wear mats at slide exits	C	See Notes
Use Zone		Good		
		Overhanging branches	Maint.	Cut back to 7ft. from structure
Structural Stability		Good		
Large Composite Structure (Play & Park Structures)				
Components				
Stairs (2)		Good		
Spiral Step Climber		Good		
Step Link Bridge		Good		
Transfer Platform		Good		
Apex Climber		Good		
Cliff Climber		Good		
Wiggle Wave Climber		Good		
Triple Avalanche Slide		One slide loose at bottom footing	Maint.	Reset one slide in new footing at exit section
Table w/ Two Seats below & One Bench		Missing one bench	Maint.	Replace one bench
		Four protrusions at missing bench brackets	A	Replace bench or remove bracket bar

AREA #3 CONDITION REPORT

		Condition	Hazard Priority	Recommendation
Max Climb Ridge Top		Good		
Wild Swinger		Head entrapment at side barriers	A	Consult Manufacturer
Climb A Round		Good		
Rock Bar Overhead		Good		
Twister				
Chin Up Bars (2)		Good		
Play Panels (2)		Good		
Balcony w/ Steering Wheel		Good		
Decks (6)		Good		
Roof (3)		Good		
Access Step (1)		Good		
Surfacing	EWF 3-12"	Insufficient	A	Add EWF & level
		No wear mats at slide exits	C	See Notes
Use Zone		Good		
Structural Stability		Good		
Freestanding Equipment				
Toss Up (Playworld)		Good		
Surfacing		N/A		
Use Zone		N/A		
Structural Stability		Good		
Coaster Climber (GameTime)		Good		
Surfacing	EWF 3-6"	Insufficient	A	Add EWF & level
Use Zone		Good		
Structural Stability		Good		
Space Shuttle (GameTime)		Good		
Surfacing	EWF 4-7"	Insufficient	A	Add EWF & level
Use Zone		Good		
		Overhanging branches	Maint.	Cut back to 7ft. from unit
Structural Stability		Good		

AREA #3 CONDITION REPORT

			Condition	Hazard Priority	Recommendation
8ft. Swing Set (2Bay/4Belts) (Playworld)			Eight swing hangers worn	A	Replace eight swing hangers
Surface	0"	No surfacing, gravel & rocks below swings	A	Remove rocks & add 9-12" EWF	
		Four wear mats broken, tipping hazard	B	Replace four wear mats	
		Exposed fabric, tripping hazard	B	Cover fabric with EWF	
Use Zone		Inadequate, no clear use zone	A	Create clear use zone and add 9-12" of EWF	
Structural Stability		Good			

Swings should not be used until surfacing is installed

Notes:

There are no wear mats at the slide exits. ADA requires wear mats for accessibility and the prevention of holes at the slide exits.

It is the playground owner's responsibility to maintain the test results for the safety surfacing showing that the depth is appropriate for the fall height of the equipment in the playground.

**Hazard and Maintenance Pictures
Area #3**

**Small Composite Structure (Playworld Systems)
Transfer Platform - Plastisol torn off at stairs - MAINTENANCE**



Long Glide Slide - Small cracks in bed way - MAINTENANCE



U Bounce - Rubber step worn & one pipe cap missing - MAINTENANCE





Sky Rocker - Very tight - MAINTENANCE

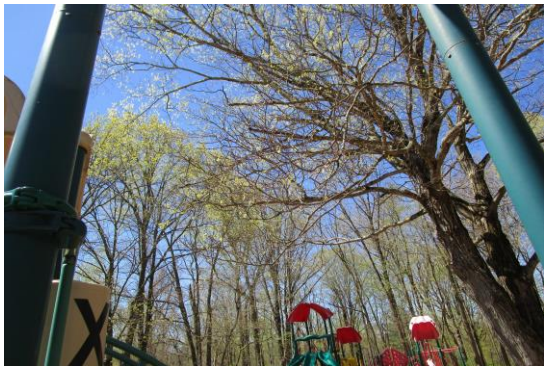


Surfacing - No wear mats at slide exits - CLASS C HAZARD





Use Zone - Overhanging branches - MAINTENANCE



Large Composite Structure (Play & Park)

Triple Avalanche Slide - One slide loose at bottom footing - MAINTENANCE





Table w/ Two Seats & One Bench - One missing bench - MAINTENANCE



**Table w/ Two Seats & One Bench - Four protrusions at missing bench brackets -
CLASS A HAZARD**



Wild Swinger - Head entrapment at side brackets - CLASS A HAZARD



Surfacing - No wear mats at slide exits - CLASS C HAZARD

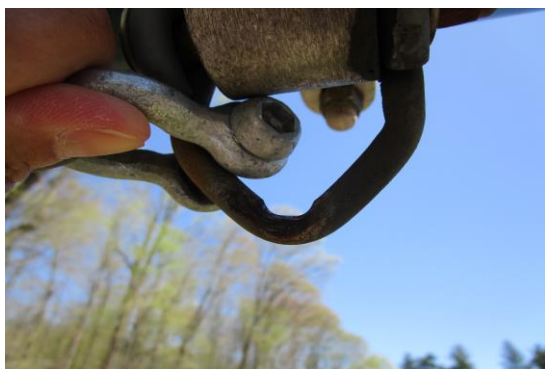


Freestanding Equipment

Space Shuttle (GameTime) - Overhanging branches - MAINTENANCE



8ft. Swing Set (2Bay/4Belt)(Playworld)- Eight swing hangers worn - CLASS A HAZARD



Surfacing - None, gravel & rocks below swings- CLASS A HAZARD



Surfacing - Fabric exposed, tripping hazard - CLASS B HAZARD



Surfacing - Four wear mats broken, tripping hazard - CLASS B HAZARD



Use Zone - Inadequate, no clear use zone - CLASS A HAZARD

