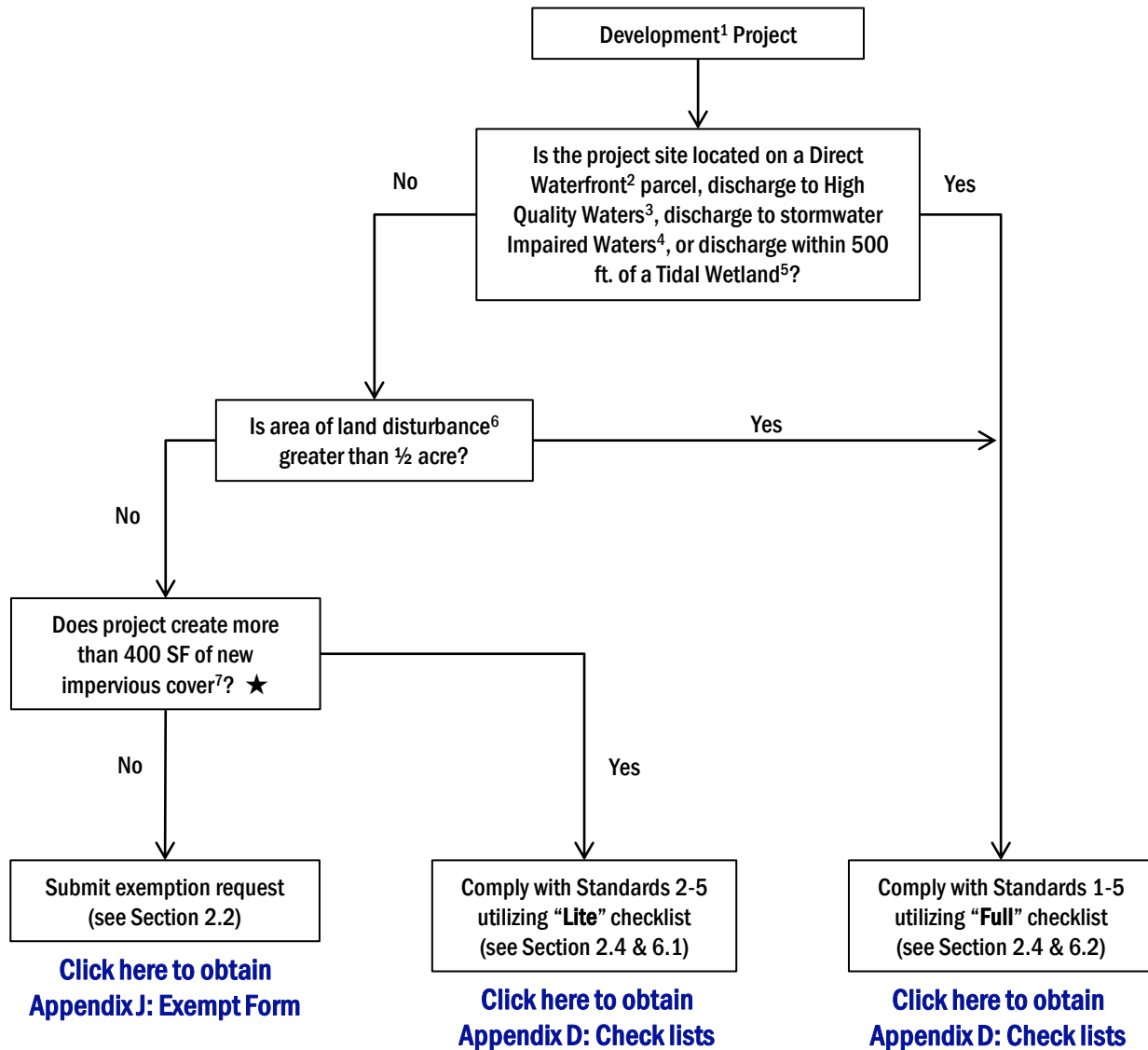


## What is Site Work?

Site Work includes any land disturbance or action that causes a change in position, location, or arrangement of soil, sand, rock, gravel or similar material.

## What Stormwater Management Standards apply to your project?

Please follow the flow chart below.



- 1. Development** - The modification of land to accommodate a new use or expansion of use, usually involving construction.
  - 2. Direct Waterfront** - Those parcels identified on the Direct Waterfront Parcels Map located in *Appendix A*.
  - 3. High Quality Waters** - Surface waters where the water quality is better than necessary to meet the criteria established in the Connecticut Water Quality Standards Regulations, as amended, for the applicable classification or which may sustain a sensitive use designated for a higher classification (See *Appendix H*).
  - 4. Impaired Waters** - Surface waters of the State designated by the Commissioner of the CTDEEP as impaired pursuant to Section 303(d) of the federal Clean Water Act and as identified in the most recent State of Connecticut Integrated Water Quality Report within Categories 4 or 5, including any subdivisions of these categories.
  - 5. Tidal Wetlands** - Those areas that border on or lie beneath tidal waters whose surface is at or below an elevation of one foot above local extreme high water and upon which may grow or be capable of growing some, but not necessarily all, of the plant species specified in Connecticut General Statutes section 22a-29(2) (See reference mapping in *Appendix A*).
  - 6. Land Disturbance** - Any action that causes a change in the position, location, or arrangement of soil, sand, rock, gravel or similar earth material.
  - 7. Impervious Cover** - Any material or structure on or above the ground that prevents water from infiltrating through the underlying soil.
- ★ Applicants shall comply with Standard 1, E from Section 2.4 of this manual when proposing a new or improved parking area serving six (6) or more spaces, regardless of the amount of new impervious cover created, or when seeking an approval or permit from the City of Stamford on a site with an existing parking area serving six (6) or more spaces, regardless of the amount of new impervious cover created.

**For further details, please refer to the full Stormwater Drainage Manual.**  
**(click here to view the manual)**