

NO.	DATE	DESCRIPTION	CK. BY
REVISIONS			

CONSULTANT:

GM2 ASSOCIATES
 GM2 Associates, Inc.
 115 Glastonbury Boulevard
 Glastonbury, CT 06033



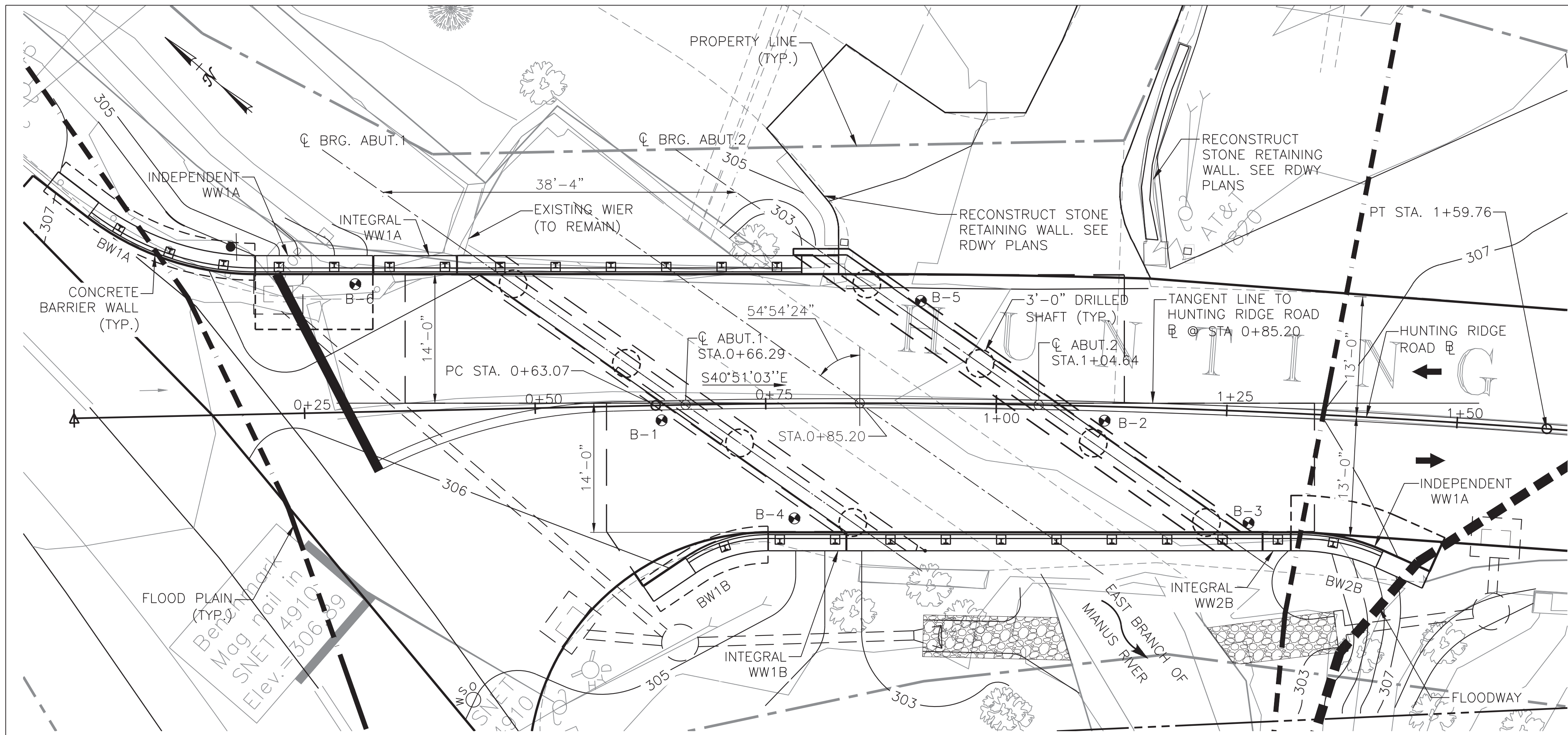
CITY OF STAMFORD
 OFFICE OF OPERATIONS
 ENGINEERING BUREAU

SURVEYED BY:	DATE:	DESIGNED BY:	DATE:
GM2 ASSOC.	7/2023	PMB	8/2023
DRAWN BY:	DATE:	CHECKED BY:	DATE:
PMB	12/2023	ALM	2/2024

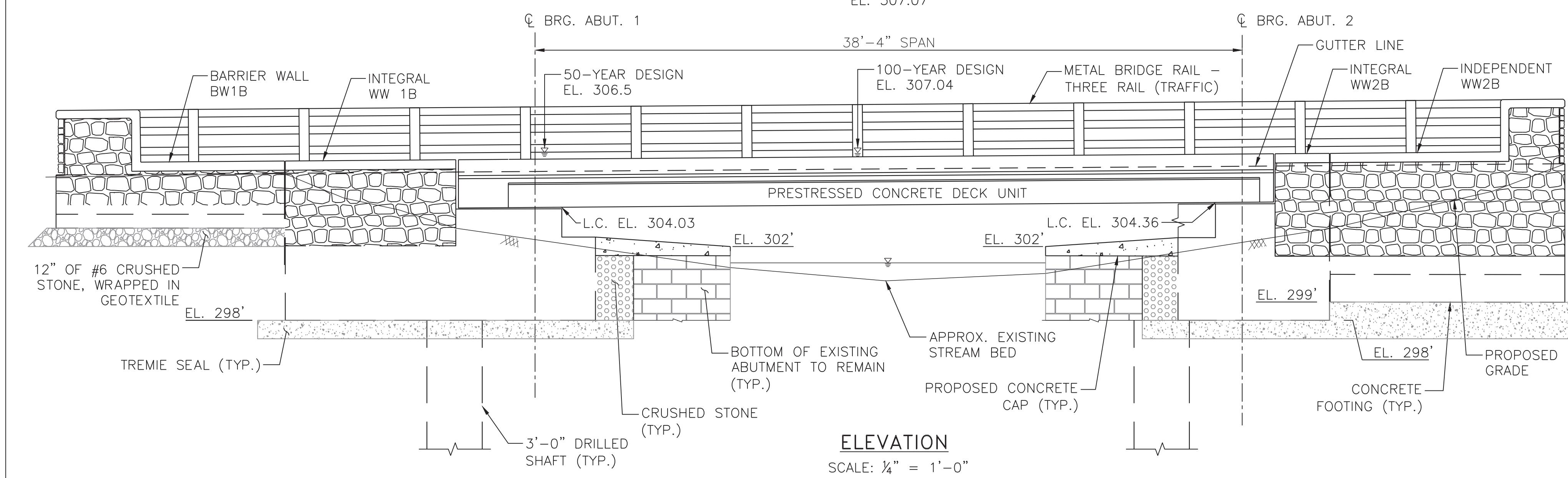
PROJECT TITLE: **REPLACEMENT OF HUNTING RIDGE ROAD BRIDGE OVER EAST BRANCH MIANUS RIVER**

DRAWING TITLE: **ROADWAY PLAN**

SCALE:	1"=10'
PROJECT NO.:	9135-009
DRAWING NO.:	HWY-1
SHEET NO.:	



PLAN
SCALE: 1/8" = 1'-0"
EL. 307.07'



ELEVATION
SCALE: 1/4" = 1'-0"

GENERAL NOTES:

SPECIFICATIONS: CONNECTICUT DEPARTMENT OF TRANSPORTATION FORM 818 DATED 2020; SUPPLEMENTAL SPECIFICATION DATED JULY 2023 AND SPECIAL PROVISIONS.

DESIGN SPECIFICATIONS: AASHTO LRFD BRIDGE DESIGN SPECIFICATIONS (9TH EDITION - 2020), AS SUPPLEMENTED BY THE CONNECTICUT DEPARTMENT OF TRANSPORTATION BRIDGE DESIGN MANUAL (2003), WITH THE LATEST REVISIONS.

MATERIAL STRENGTHS:
 CONCRETE:
 CLASS PCC 03340f'c=3,000 psi
 CLASS PCC 04460f'c=4,000 psi
 CLASS PCC 04462f'c=4,000 psi
 PRESTRESSED DECK UNITSf'c=6,500 psi

THE CONCRETE STRENGTH, f'c, USED IN DESIGN OF THE CONCRETE COMPONENTS IS NOTED ABOVE. THE COMPRESSIVE STRENGTH OF THE CONCRETE IN THE CONSTRUCTED COMPONENTS SHALL CONFORM TO THE REQUIREMENTS OF 6.01- CONCRETE FOR STRUCTURES AND M.03- PORTLAND AND HYDRAULIC CEMENT CONCRETE.

REINFORCEMENT: (ASTM A615 GRADE 60)..... fy = 60,000 PSI

LIVE LOAD: HL-93, LEGAL AND PERMIT VEHICLES.

FUTURE PAVING ALLOWANCE: NONE.

BITUMINOUS CONCRETE OVERLAY: THIS SHALL CONSIST OF TWO LIFTS: THE FIRST SHALL BE "HMA S0.25 TRAFFIC LEVEL 2" (1" THICK) AND THE SECOND LIFT SHALL BE "HMA S0.375 TRAFFIC LEVEL 2" (2" THICK) .

FOUNDATION PRESSURES: THE LIMIT STATES NOTED ON THE SUBSTRUCTURE PLAN SHEETS REFER TO LOAD COMBINATIONS AS GIVEN IN THE AASHTO LRFD BRIDGE DESIGN SPECIFICATIONS.

DIMENSIONS: WHEN DECIMAL DIMENSIONS ARE GIVEN LESS THAN THREE DECIMAL PLACES, THE OMITTED DIGITS SHALL BE ASSUMED TO BE ZEROS.

EXISTING DIMENSIONS: DIMENSIONS OF THE EXISTING STRUCTURE SHOWN ON THESE PLANS ARE FOR GENERAL REFERENCE ONLY. THEY HAVE BEEN TAKEN FROM THE ORIGINAL DESIGN DRAWINGS AND ARE NOT GUARANTEED. THE CONTRACTOR SHALL TAKE ALL FIELD MEASUREMENTS NECESSARY TO ASSURE PROPER FIT OF THE FINISHED WORK AND SHALL ASSUME FULL RESPONSIBILITY FOR THEIR ACCURACY. WHEN SHOP DRAWINGS BASED ON FIELD MEASUREMENTS ARE SUBMITTED FOR REVIEW, THE FIELD MEASUREMENTS SHALL ALSO BE SUBMITTED FOR REFERENCE BY THE REVIEWER.

EXISTING BRIDGE: THE WORK FOR REMOVAL OF THE EXISTING SUPERSTRUCTURE SHALL BE INCLUDED AND PAID FOR UNDER THE ITEM "REMOVAL OF SUPERSTRUCTURE". THE WORK FOR REMOVAL OF EXISTING SUBSTRUCTURE SHALL BE PAID FOR UNDER ITEM "REMOVAL OF EXISTING MASONRY".

UTILITIES: THE CONTRACTOR SHALL PROTECT AND MAINTAIN ALL EXISTING UTILITIES WITHIN THE PROJECT LIMITS, UNLESS NOTED OTHERWISE. IF ANY UTILITY IS DAMAGED OR SERVICE IS INTERRUPTED DURING CONSTRUCTION, THE CONTRACTOR SHALL BE RESPONSIBLE FOR RESTORING FULL SERVICE IN A SAFE MANNER APPROVED BY THE UTILITY COMPANY AND ENGINEER.

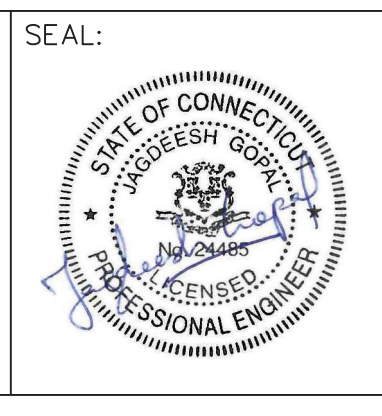
BRIDGE IDENTIFICATION PLACARDS: THE CONTRACTOR SHALL PROVIDE AND INSTALL NEW BRIDGE IDENTIFICATION SIGNS AT THE LEADING END OF EACH CONCRETE END BLOCK ON THE TRAFFIC SIDE. THE SIGNS SHALL BE FABRICATED WITH 40 GAUGE ALUMINUM SHEET METAL. THE SIGNS SHALL BE 4" X 12" WITH 3" WHITE RETROREFLECTIVE BLOCK LETTERS ON GREEN RETROREFLECTIVE SHEETING. EACH SIGN SHALL READ 135009. ALL COSTS ASSOCIATED WITH PROVIDING AND INSTALLING THE BRIDGE SIGNS SHALL BE COVERED UNDER ITEM #1208937A- SIGN FACE SHEET ALUMINUM (TYPE XI RETROREFLECTIVE SHEETING).THE FINAL LOCATION AND ATTACHMENT METHOD FOR THE SIGNS SHALL BE APPROVED BY THE ENGINEER PRIOR TO ATTACHMENT.

CONCRETE NOTES:
FOR CONCRETE NOTES SEE NEXT SHEET

NO.	DATE	DESCRIPTION	CK. BY
REVISIONS			

FILE NO.: STR_Hunting Ridge Rd_Struct_GPN.dwg

CONSULTANT:
GM2 ASSOCIATES
 GM2 Associates, Inc.
 115 Glastonbury Boulevard
 Glastonbury, CT 06033



CITY OF STAMFORD
 OFFICE OF OPERATIONS
 ENGINEERING BUREAU

SURVEYED BY:	DATE:	DESIGNED BY:	DATE:
GM2 ASSOC.	1/26/16	NB/NM	10/15/23
DRAWN BY:	DATE:	CHECKED BY:	DATE:
NB	12/15/23	DK/JG	02/09/24

PROJECT TITLE:	REPLACEMENT OF HUNTING RIDGE ROAD BRIDGE OVER EAST BRANCH MIANUS RIVER
DRAWING TITLE:	GENERAL PLAN & ELEVATION

SCALE:	AS NOTED
PROJECT NO.:	9135-009
DRAWING NO.:	STR-1
SHEET NO.:	