

Downtown Roadway Projects: Bedford/Forest, Atlantic Street, and Broad Street



Public Meeting
July 16, 2024

Frank W. Petise, PE
Luke Bittenwieser
Stephen Frycz
Jianhong Wang, PE,
PTOE, RSP1

Transportation, Traffic
& Parking Department



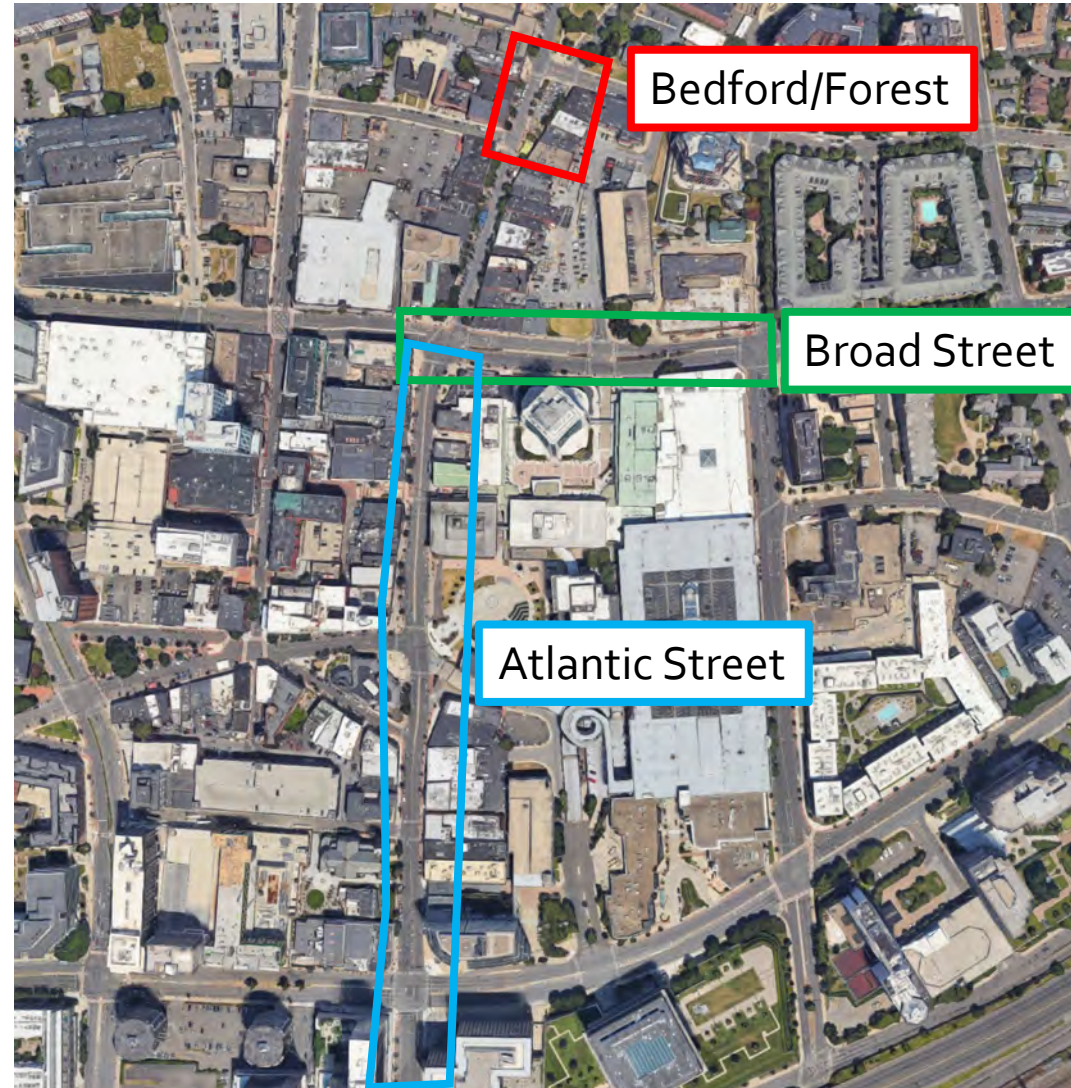


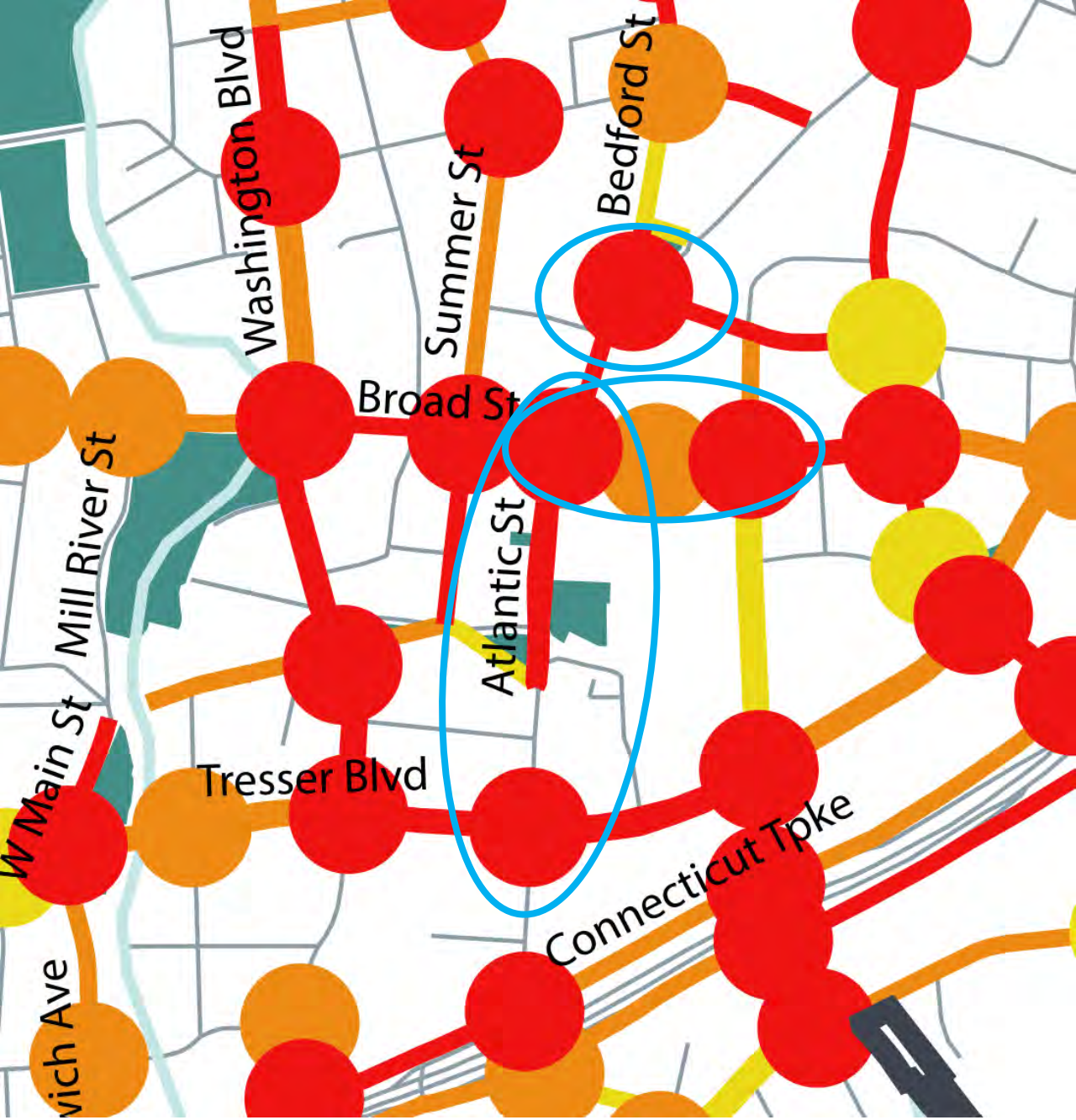
Transportation, Traffic & Parking Department

Mission:

Ensure the safe and efficient movement of people and goods in the City of Stamford.

Projects Areas





Vision Zero

A commitment to eliminate traffic deaths

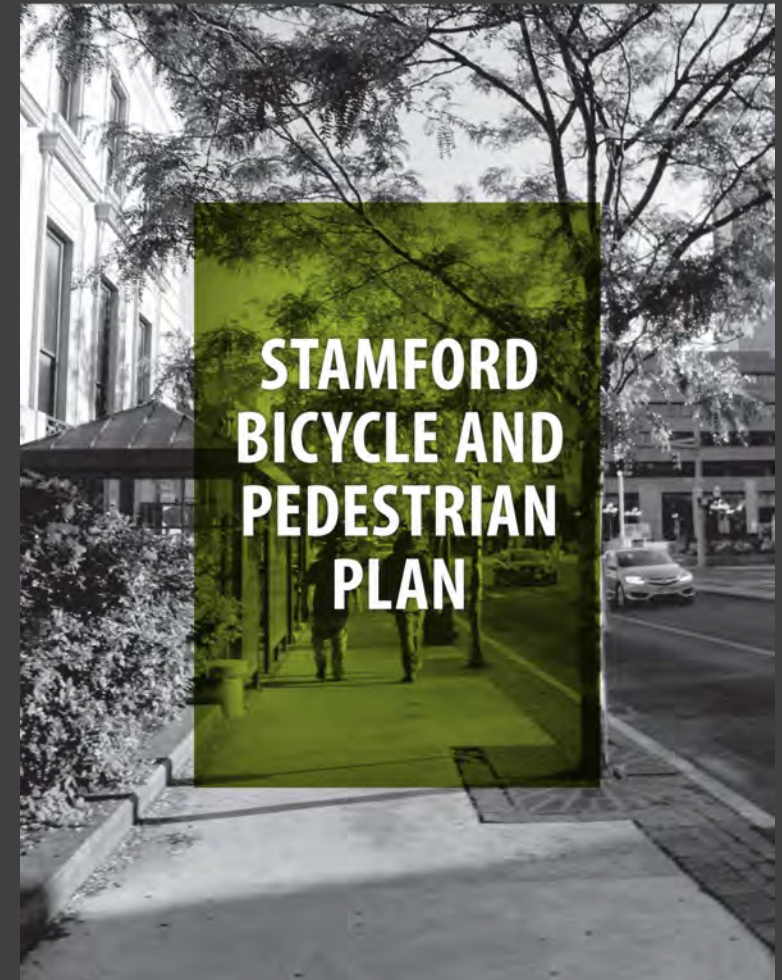
- One death is too many
 - People make mistakes
 - People are vulnerable
 - Safety is proactive
 - Reduce speeds
-
- **All project locations are Tier 1 on the HIN map**

Background

Recommended by City Plans



STAMFORD MASTER PLAN 2015-2025



Legislative Direction

Passed Board of Representative Resolutions and Mayoral Executive Orders

- BOR Resolution 4130: Declaring a Climate Emergency
 - “Be it further resolved that the Board of Representatives urges the Mayor to direct all City department heads, committees, and commissions to establish plans to reduce greenhouse gas emissions... which may include, but is not limited to:
 - Providing pedestrian and bicycle infrastructure;
 - Improving access to public transportation to reduce vehicle dependency”
- BOR Resolution 4193: Resolution to Advance and Support the City of Stamford’s Vision Zero Initiative
 - “Be it further resolved that, the City of Stamford Board of Representatives supports the funding and implementation of Vision Zero principals, including but not limited to:
 - Roadway designs that prioritize the safety of vulnerable users, including people with disabilities, seniors, and children; that implements good engineering design such as Complete Street; and that reduces speeding, improves and expands pedestrian and bicycle facilities; and that creates safer streets for all users”
- Mayor’s Climate Change Executive Order
 - “Require the City’s Transportation Department to develop a plan to increase the number of commuting trips utilizing active transportation modes to 25 % withing 10 years, by building out and enhancing biking, walking, and transit networks.”
- Mayor’s Vision Zero Executive Order
 - “The City of Stamford formally adopts the Vision Zero Initiative with the goal eliminating traffic fatalities and serious injuries on Stamford roadways by the year 2032”



Bedford and Forest Street

Plaza and intersection reconstruction

Luke Buttenwieser

Outdoor Dining

From temporary to permanent



Goals

What we're trying to achieve

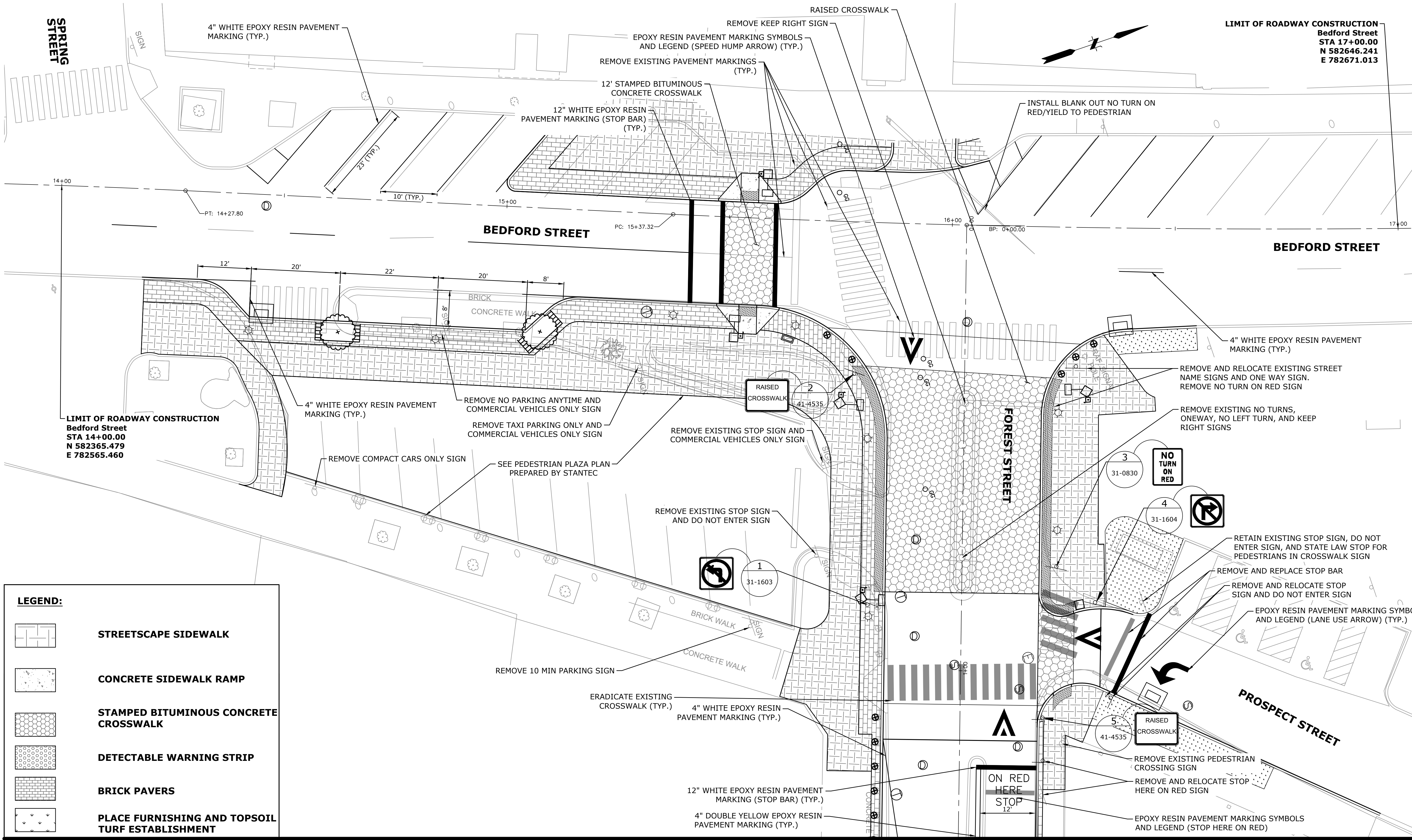
- Increase safety
- Enhance infrastructure
- Expand outdoor dining
- Expand public space
- Expand green space
- Enhance lighting
- Enhance ADA compliance
- Support local businesses



Details and Timeline

- New public plaza
- Expanded outdoor dining area
- Planting street trees
- New street lights
- Loading zones
- Raised crosswalk crossing Forest Street and Bedford Street
- New traffic signal
- Estimated Cost:
 - \$3,000,000
 - 66% State Grant funded
- At 90% design phase
- Scheduled for construction in Spring/Summer 2025
- Setting up pre-construction meetings with stakeholders

File Path: J:\DWG\2018\20180287A57\Civil\Plan\20180287A57_PVT01.dwg Layout: PVT-01 Plotted: Wed, December 06, 2023 - 11:47 AM User: acarlson
 MS VIEW: LAYER STATE: PLOTTER: AUTOCAD PDF (GENERAL DOCUMENTATION) PC3 CTB File: FO.STB



LEGEND:

- STREETSCAPE SIDEWALK**
- CONCRETE SIDEWALK RAMP**
- STAMPED BITUMINOUS CONCRETE CROSSWALK**
- DETECTABLE WARNING STRIP**
- BRICK PAVERS**
- PLACE FURNISHING AND TOPSOIL TURF ESTABLISHMENT**

MATCH LINE SEE SHEET PVT-02

No.	DATE	DESCRIPTION	DESIGNER	REVIEWER

SEAL	SEAL
------	------

SCALE:

HORZ.: 1" = 10'

VERT.: 1" = 10'

DATUM:

HORZ.: 1" = 10'

VERT.: 1" = 10'

GRAPHIC SCALE

FUSS & O'NEILL

146 HARTFORD ROAD
MANCHESTER, CONNECTICUT 06040
860.646.2469
www.fando.com

CITY OF STAMFORD

PAVEMENT MARKING AND SIGNING PLAN

BEDFORD STREET AND FOREST STREET INTERSECTION IMPROVEMENTS

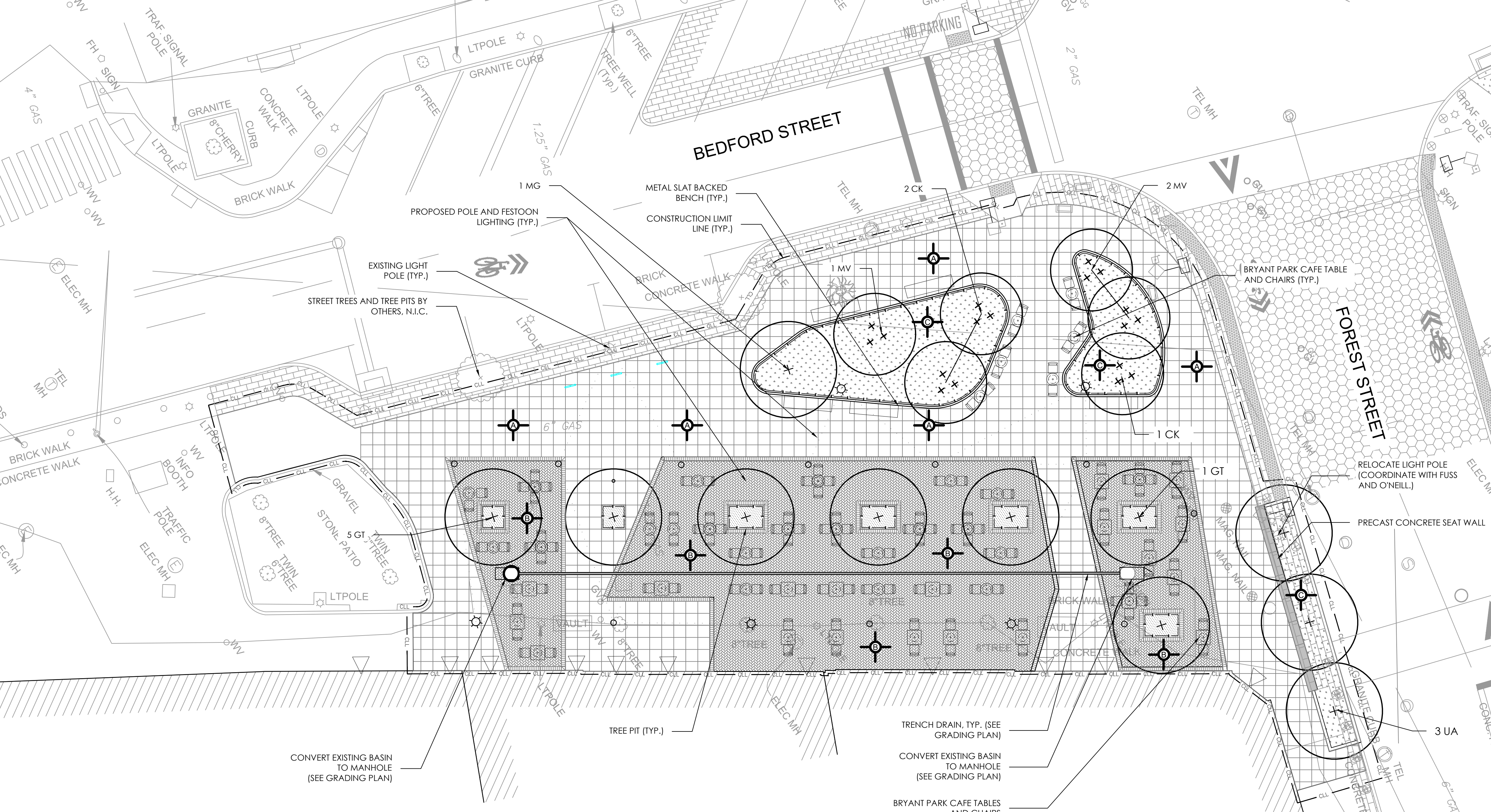
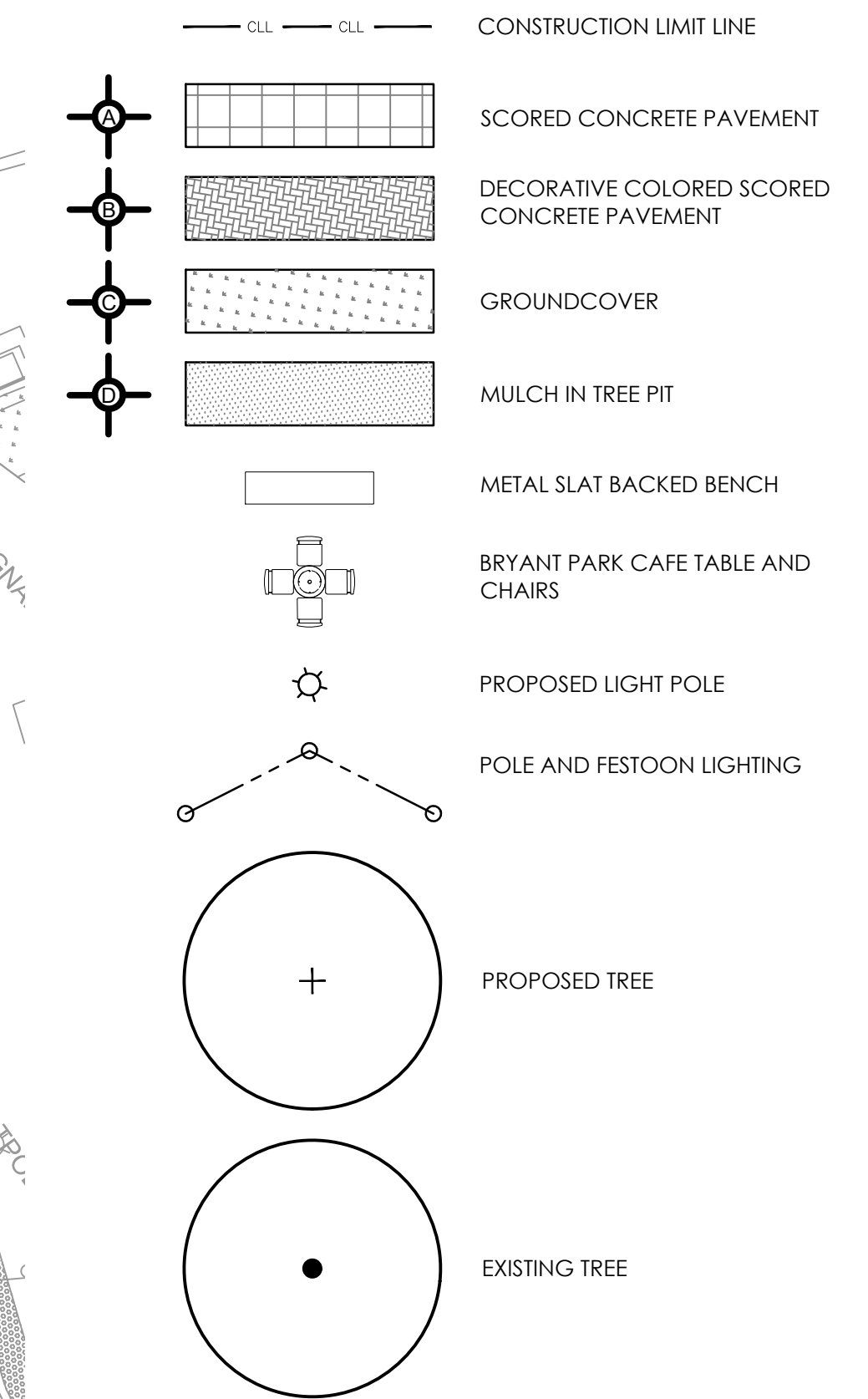
STAMFORD
CONNECTICUT

PROJ. No.: 20180287.A57
DATE: DECEMBER 2023

PVT-01

SYMBOL	BOTANICAL NAME	COMMON NAME	QTY.	SIZE	NOTES
TREES					
GT	GLEDTISIA TRIACANTHOS VAR. INERMIS	HONEYLOCUST	6	3"-3.5" CAL.	B&B
MG	METASEQUOIA GLYPTOSTROBOIDES	DAWN REDWOOD	1	12-14' HT	B&B
QP	QUERCUS PALUSTRIS	PIN OAK	XX	3"-3.5" CAL.	B&B
UA	ULMUS ACCOLADE	ACCOLADE ELM	3	3"-3.5" CAL.	B&B
ORNAMENTAL TREES					
CK	CLEDRASTUS KENTUKEA	YELLOWWOOD	3	10-12' HT	MULTISTEM
MV	MAGNOLIA VIRGINIANA	SWEETBAY MAGNOLIA	3	10-12' HT	MULTISTEM
GROUND COVER					
LM	LIRIOPE MUSCARI	LILYTURF	2800	FLATS	12" O.C.
PA	PACHYSANDRA PROCUMBENS	ALLEGHENY SPURGE	2800	FLATS	12" O.C.

MATERIALS AND PLANTING LEGEND



MATERIALS AND PLANTING NOTES

- CONTRACTOR SHALL LAY OUT AND STAKE IN THE FIELD THE ALIGNMENT PAVEMENTS FOR REVIEW BY THE LANDSCAPE ARCHITECT. ADJUSTMENTS MAY BE MADE ONLY AS DIRECTED BY THE LANDSCAPE ARCHITECT. CONTRACTOR MAY NOT PROCEED WITH CONSTRUCTION OF IMPROVEMENTS UNTIL HE HAS RECEIVED THE FINAL APPROVAL OF THE LAYOUT FROM THE LANDSCAPE ARCHITECT.
- ALL NEW PAVEMENTS CURBS AND EXISTING PAVEMENTS AND CURBS TO REMAIN SHALL MEET IN SMOOTH FLUSH CONDITION UNLESS NOTED OTHERWISE. NEW CURBS, WALLS, AND PAVEMENTS SHALL BE BUILT TO A SMOOTH EVEN FINISH WITH A CONSISTENT TOP AND PROFILE WITHOUT WAVES OR IRREGULARITIES. ANY WORK NOT MEETING THIS QUALITY STANDARD SHALL BE REPLACED AT THE CONTRACTOR'S EXPENSE.
- THE CONTRACTOR SHALL EXERCISE CARE DURING EXCAVATION OPERATIONS TO AVOID DISTURBING ADJACENT FACILITIES, SUBGRADE STRUCTURES AND TREES. ALL DAMAGE RESULTING FROM THE CONSTRUCTION SHALL BE THE CONTRACTOR'S RESPONSIBILITY AND SHALL BE REPAIRED AT NO EXPENSE TO THE CITY OF STAMFORD. ALL REPAIR WORK SHALL BE TO THE SATISFACTION OF THE RESIDENT ENGINEER AND LANDSCAPE ARCHITECT. PLANTED AREAS DISTURBED BY CONTRACTOR'S WORK SHALL BE RESTORED AS DIRECTED BY THE LANDSCAPE ARCHITECT.
- NO HEAVY MACHINERY, EQUIPMENT OR STOCKPILING OF MATERIAL IS PERMITTED WITHIN THE DRIP LINES OF EXISTING TREES.
- THE CONTRACTOR SHALL TAKE SPECIAL CARE TO PROTECT ALL EXISTING TREES AND THEIR ROOT SYSTEM. EXCAVATIONS WITHIN THE DRIP LINES OF TREES SHALL BE KEPT TO A MINIMUM AND SHALL BE COMPLETED BY HAND ONLY AND SHALL BE PERFORMED IN THE PRESENCE OF THE RESIDENT ENGINEER. AT NO ADDITIONAL EXPENSE TO THE CITY OF STAMFORD, NO ROOTS SHALL BE CUT WITHOUT THE WRITTEN AUTHORIZATION OF DIRECTOR OF LANDSCAPE CONSTRUCTION OR THEIR REPRESENTATIVE.
- THE CONTRACTOR IS RESPONSIBLE FOR IDENTIFYING LONG LEAD ITEMS AND ORDERING THESE MATERIALS IN A TIMELY MANNER.
- THE CONTRACTOR SHALL VERIFY ALL EXISTING SITE CONDITIONS, BOTH ABOVE AND BELOW THE SURFACE. ANY DISCREPANCIES BETWEEN INFORMATION SHOWN ON THE DRAWINGS AND ACTUAL FIELD CONDITIONS SHALL BE BROUGHT TO THE ATTENTION OF THE RESIDENT ENGINEER AND PARKS IN WRITING PRIOR TO COMMENCING WORK.
- LOCATIONS OF EXISTING TREES SHALL BE VERIFIED IN THE FIELD.
- NO CHANGES SHALL BE MADE TO THE DESIGN OR LAYOUT WITHOUT THE WRITTEN APPROVAL OF THE LANDSCAPE ARCHITECT. LAY OUT THE WORK AS DIMENSIONED ON THE PLANS. WRITTEN DIMENSIONS SHALL GOVERN; DO NOT SCALE DISTANCES.
- CONTRACTOR SHALL LAY OUT AND STAKE IN THE FIELD THE ALIGNMENT AT ALL PATHS AND PAVEMENTS FOR REVIEW BY THE LANDSCAPE ARCHITECT. ADJUSTMENTS MAY BE MADE ONLY AS DIRECTED BY THE LANDSCAPE ARCHITECT. CONTRACTOR MAY NOT PROCEED WITH CONSTRUCTION OF IMPROVEMENTS UNTIL HE HAS RECEIVED THE FINAL APPROVAL OF THE LAYOUT FROM THE LANDSCAPE ARCHITECT.
- NO TREES CAN BE STORED ON SITE. ALL TREES MUST BE SHIPPED DIRECTLY FROM THE NURSERY AND IMMEDIATELY PLANTED ON SITE.
- ALL PLANT MATERIAL SHALL CONFORM TO THE GUIDELINES ESTABLISHED BY THE AMERICAN STANDARD FOR NURSERY STOCK, PUBLISHED BY THE AMERICAN ASSOCIATION OF NURSEYMEN, INC. ALL PLANTS SHALL BE FULLY REPRESENTATIVE OF THEIR NORMAL SPECIES AND BE HEALTHY, WELL FORMED, FREE FROM ANY DEFECTS AND BE LEGIBLY TAGGED WITH THEIR PROPER NAMES. ALL PLANT MATERIAL SHALL BE OF SPECIMEN QUALITY.
- NO SUBSTITUTIONS OF TREE SPECIES WILL BE ALLOWED UNLESS APPROVED IN ADVANCE BY THE LANDSCAPE ARCHITECT. ANY PROPOSED SUBSTITUTIONS OF PLANT SPECIES SHALL BE MADE WITH PLANTS OF EQUIVALENT OVERALL FORM, HEIGHT, BRANCHING HABIT, FLOWER, LEAF, COLOR, FRUIT AND CULTURE AND ONLY HAVE WRITTEN APPROVAL OF THE LANDSCAPE ARCHITECT.
- NO DETERIORATED OR DAMAGED PLANT MATERIALS WILL BE ACCEPTED.
- ALL PLANTS TO BE BALLED IN BURLAP WITH NATURAL FIBER ROPE. NO SYNTHETIC FIBER WILL BE ACCEPTED. WIRE BASKETS MUST BE CUT AND REMOVED.
- ALL PLANT MATERIALS MUST BE DELIVERED IN ENCLOSED TRUCKS OR UNDER TARPS MADE ESPECIALLY FOR COVERING PLANT MATERIALS IN TRANSPORT. ALL UNCOVERED SHIPMENTS OF PLANTS WILL BE REJECTED.
- ALL PROPOSED TREES SHALL BE STAKED OUT IN THEIR APPROXIMATE LOCATION BY THE CONTRACTOR. THE CONTRACTOR SHALL ADJUST THE LOCATIONS OF THESE STAKES AS REQUIRED BY THE LANDSCAPE ARCHITECT TO ACCOUNT FOR SUBSURFACE UTILITIES AND OTHER FIELD DIGGING OF TREE PITS AND THE DELIVERY OF MATERIALS FOR PLANTING. LANDSCAPE ARCHITECT MAY REQUIRE CONTRACTOR TO ADJUST FINAL PLACEMENT OF PLANTS BEFORE ACCEPTANCE OF PLANTING.
- NO TREES SHALL BE PLANTED BEFORE ACCEPTANCE OF ROUGH GRADING. TREES SHALL BE PLANTED 2" HIGHER THAN ORIGINAL NURSERY GRADE. SHRUBS AND GROUNDCOVER SHALL BEAR THE SAME RELATIONSHIP TO GRADE AS THEY BORE TO PREVIOUS GRADE AT THE NURSERY. ALL PLANTS WHICH SETTLE OUT OF PLUMB OR BELOW GRADE MUST BE IMMEDIATELY REPLANTED.
- ALL PLANTING SHALL BE DONE UNDER THE FULL-TIME, ON-SITE SUPERVISION OF A CERTIFIED LANDSCAPE PROFESSIONAL OR CERTIFIED ARBORIST EMPLOYED BY THE PLANTING CONTRACTOR. PROVIDE VERIFICATION OF CERTIFICATION FOR LANDSCAPE ARCHITECTS APPROVAL.
- ALL PLANTS ARE TO BE THOROUGHLY WATERED AFTER INSTALLATION, AT LEAST TWICE WITHIN THE FIRST 24 HOURS. MAINTENANCE SHALL BEGIN IMMEDIATELY AFTER EACH PLANT IS PLANTED AND CONTINUE UNTIL ACCEPTANCE.
- NO PRUNING WILL BE PERFORMED EXCEPT BY DIRECTION OF LANDSCAPE ARCHITECT DURING INSTALLATION. ALL PRUNING SHALL BE DONE IN ACCORDANCE WITH THE SPECIFICATIONS.
- THE CONTRACTOR SHALL SUPPLY ALL NEW PLANT MATERIAL IN QUANTITIES SUFFICIENT TO COMPLETE THE PLANTING SHOWN ON THE DRAWINGS.
- CONTRACTOR SHALL LOCATE AND VERIFY ALL EXISTING UTILITY LINES PRIOR TO PLANTING AND SHALL REPORT ANY CONFLICTS TO THE LANDSCAPE ARCHITECT.
- ALL PLANT BEDS TO RECEIVE THREE INCHES (3") OF BARK MULCH AS PER SPECIFICATIONS.
- ALL DISTURBED AREAS SHALL RECEIVE 6" TOPSOIL AND BE SEEDDED PER THE SPECIFICATIONS AND DETAILS, UNLESS OTHERWISE NOTED ON THE PLANS.



Revision	By	Appd	YYYY.MM.DD

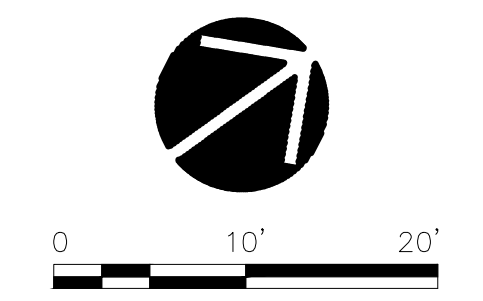
Permit/Seal
PRELIMINARY NOT FOR CONSTRUCTION
 Not for permits, pricing or other official purposes. This document has not been completed or checked and is for general information or comment only.

Client/Project
STAMFORD DOWNTOWN
BEDFORD + FOREST STREET PLAZA
 STAMFORD, CT

Project No.: 192311505
 File Name: L101_MATERIALS PLAN
 Scale:
 CH PC TE 2024.04.09
 Dwn. Dsgn. Ckcd. YYYY.MM.DD

Title
MATERIALS AND PLANTING PLAN

Revision: Sheet: 3 of 12
 Drawing No. L-101



U:\Projects\192311505\Drawing\101 Materials Plan.dwg
 2024.04.23 10:55 AM
 ORIGINAL SHEET: ARCH-D





Broad Street

Corridor Reconstruction Project

Stephen Frycz

Stamford firefighters rescue woman trapped under CT Transit bus

Liz Hardaway
July 5, 2022 | Updated: July 6, 2022 7:29 a.m.

Gift



Police: Pedestrian in critical condition after Stamford car accident

Caroline Tien
Sep. 14, 2022 | Updated: Sep. 15, 2022 8:32 a.m.

Gift



N.Y. woman dies after Saturday night crash in Stamford

Pat Tomlinson
Jan. 24, 2022 | Updated: Jan. 24, 2022 3:57 p.m.

Gift



- 2017 Local Roads Accident Reduction Program (LRARP) Grant Application
- History of fatal crashes
- Atlantic and Broad Intersection is the 6th highest crash intersection in the Region
- 172 crashes from 2017-2021 along corridor
- Atlantic and Broad Intersection top five busiest intersections for pedestrians in Stamford
- New growth and development along corridor
- Lack of bicycle facilities



Background

Why are we doing this project?



Goals

What are we trying to achieve?

Safety first

- Eliminate fatal and serious injury crashes
- Create safe bicycle infrastructure
- Calm traffic
- Improve pedestrian safety
- Add on-street parking
- Add green infrastructure



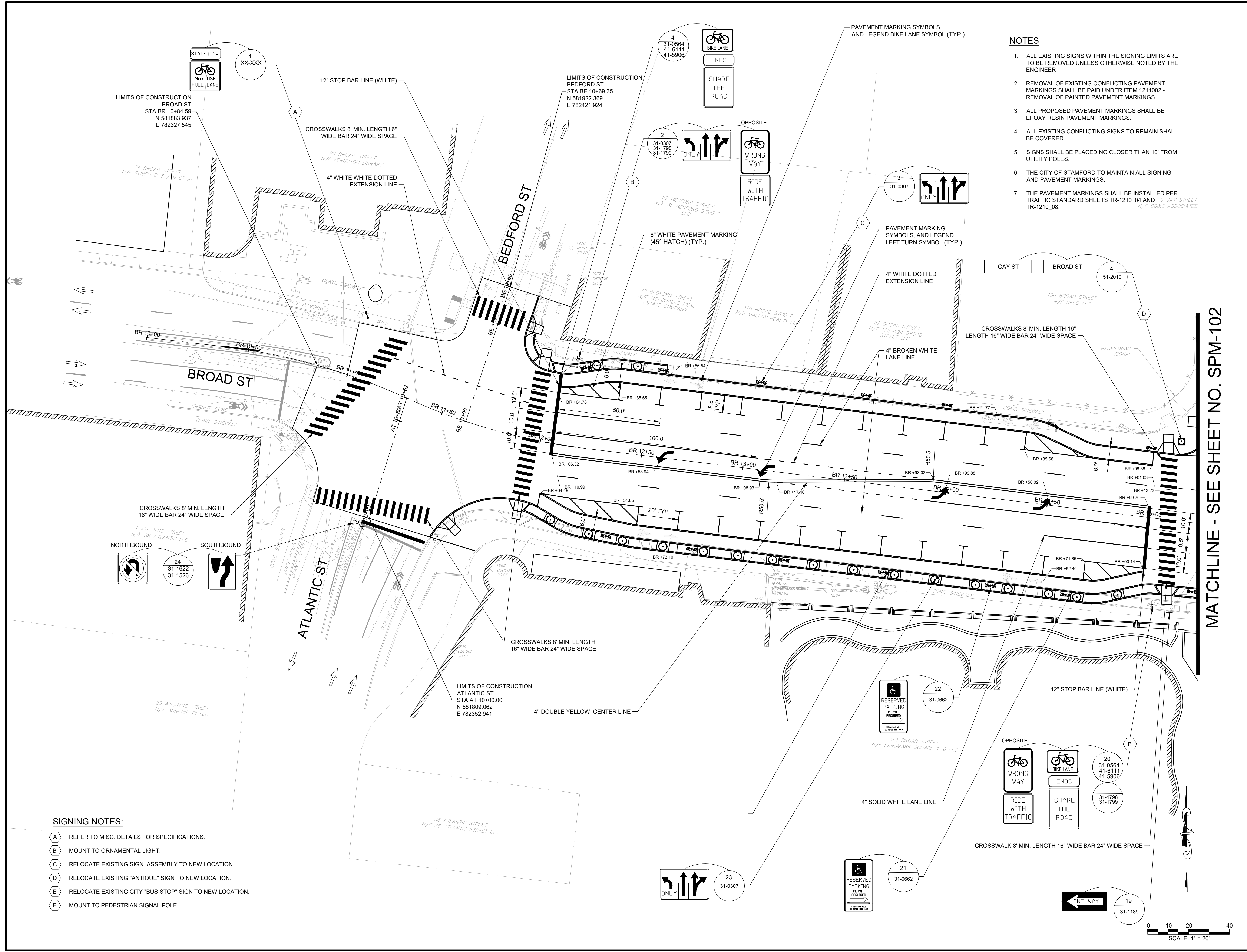
Project Details

What are we doing?

Making Broad Street a Safer, More Complete Street

- Adding parking protected bike lanes
- Removing the median
- Adding pedestrian refuge islands and bump outs
- Adding on-street parking on the north side of the road
- Upgrading the traffic signals
- Adding green infrastructure

- Current estimate: \$3.4m – State funded
- Construction estimated in 2026



- NOTES**
1. ALL EXISTING SIGNS WITHIN THE SIGNING LIMITS ARE TO BE REMOVED UNLESS OTHERWISE NOTED BY THE ENGINEER
 2. REMOVAL OF EXISTING CONFLICTING PAVEMENT MARKINGS SHALL BE PAID UNDER ITEM 1211002 - REMOVAL OF PAINTED PAVEMENT MARKINGS.
 3. ALL PROPOSED PAVEMENT MARKINGS SHALL BE EPOXY RESIN PAVEMENT MARKINGS.
 4. ALL EXISTING CONFLICTING SIGNS TO REMAIN SHALL BE COVERED.
 5. SIGNS SHALL BE PLACED NO CLOSER THAN 10' FROM UTILITY POLES.
 6. THE CITY OF STAMFORD TO MAINTAIN ALL SIGNING AND PAVEMENT MARKINGS.
 7. THE PAVEMENT MARKINGS SHALL BE INSTALLED PER TRAFFIC STANDARD SHEETS TR-1210_04 AND TR-1210_08.

OWNER
 CITY OF STAMFORD
 888 WASHINGTON BOULEVARD
 STAMFORD, CT 06901

ENGINEER

 AKRF, INC
 500 SUMMER STREET, SUITE 306
 STAMFORD, CT 06901
 (203)-666-2030 (PHONE)

SURVEYOR

 FREEMAN COMPANIES, LLC
 36 JOHN STREET
 HARTFORD, CT 06106
 (860)251-9550

MATCHLINE - SEE SHEET NO. SPM-102

MARISSA TARALLO, P.E.
 NYS LIC. 096451

REVISIONS

No.	DATE	DESCRIPTION

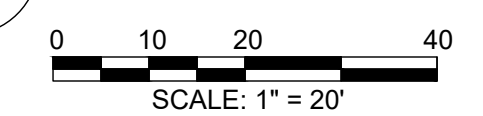
PROJECT
 BROAD STREET CORRIDOR
 SAFETY IMPROVEMENTS DESIGN
 CITY OF STAMFORD, CT

DRAWN BY HFH/GJA	CHECKED BY JCT/JHS
SCALE 1" = 20'	DATE 3/8/2024

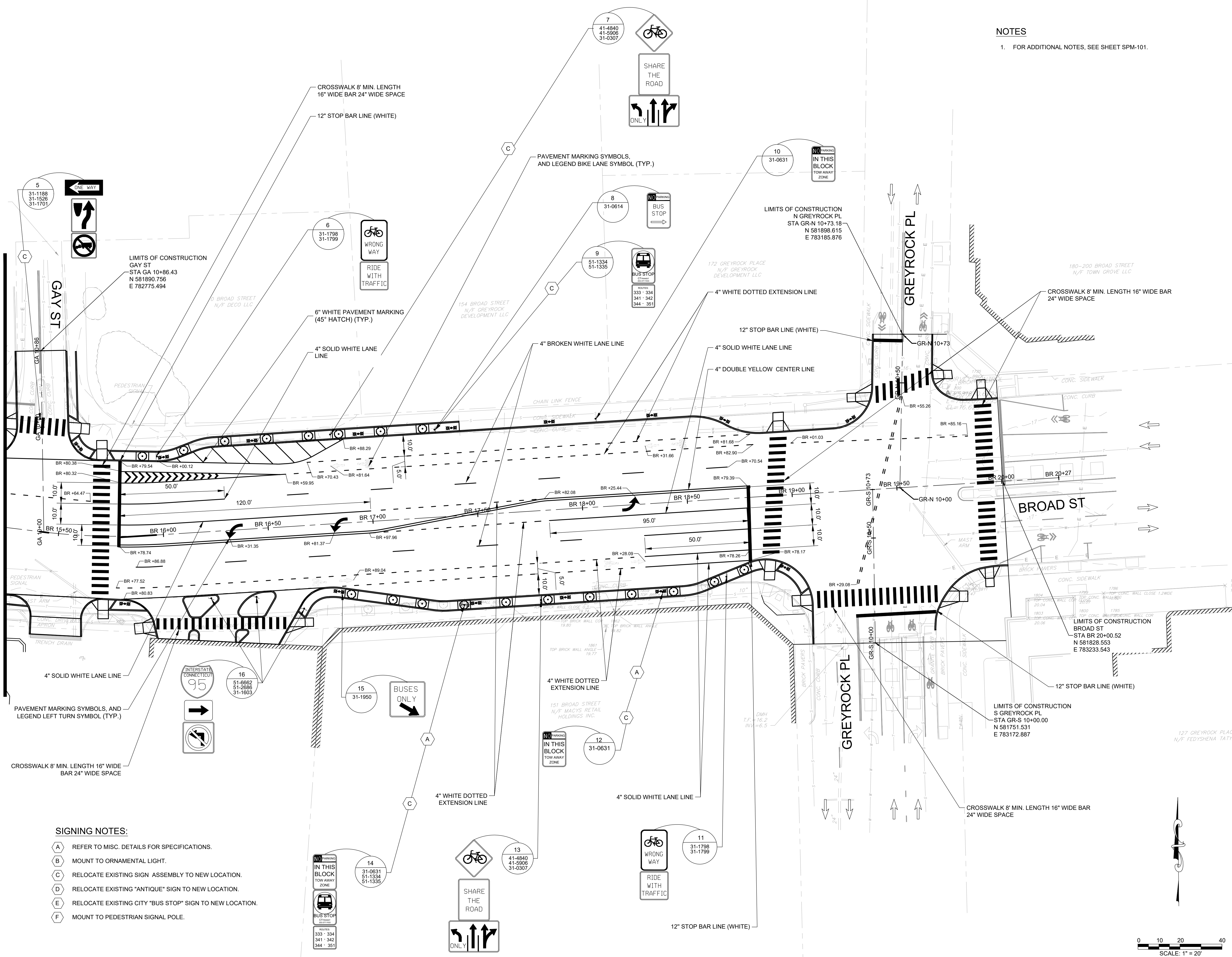
SHEET TITLE
 SIGNING AND STRIPING PLANS

SHEET NO.
 SPM-101

- SIGNING NOTES:**
- (A) REFER TO MISC. DETAILS FOR SPECIFICATIONS.
 - (B) MOUNT TO ORNAMENTAL LIGHT.
 - (C) RELOCATE EXISTING SIGN ASSEMBLY TO NEW LOCATION.
 - (D) RELOCATE EXISTING "ANTIQU" SIGN TO NEW LOCATION.
 - (E) RELOCATE EXISTING CITY "BUS STOP" SIGN TO NEW LOCATION.
 - (F) MOUNT TO PEDESTRIAN SIGNAL POLE.



MATCHLINE - SEE SHEET NO. SPM-101



NOTES
 1. FOR ADDITIONAL NOTES, SEE SHEET SPM-101.

OWNER
 CITY OF STAMFORD
 888 WASHINGTON BOULEVARD
 STAMFORD, CT 06901

ENGINEER
AKRF
 AKRF, INC
 500 SUMMER STREET, SUITE 306
 STAMFORD, CT 06901
 (203)-666-2030 (PHONE)

SURVEYOR
FREEMAN
 COMPANIES
 FREEMAN COMPANIES, LLC
 36 JOHN STREET
 HARTFORD, CT 06106
 (860)251-9550

MARISSA TARALLO, P.E.
 NYS LIC. 096451

REVISIONS		
No.	DATE	DESCRIPTION

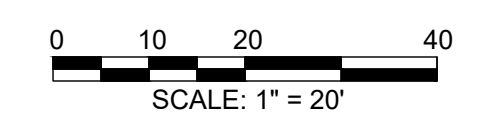
PROJECT
 BROAD STREET CORRIDOR
 SAFETY IMPROVEMENTS DESIGN
 CITY OF STAMFORD, CT

DRAWN BY HFH/GJA	CHECKED BY JCT/JHS
SCALE 1" = 20'	DATE 3/8/2024

SHEET TITLE
 SIGNING AND STRIPING PLANS

SHEET NO.
 SPM-102

- SIGNING NOTES:**
- (A) REFER TO MISC. DETAILS FOR SPECIFICATIONS.
 - (B) MOUNT TO ORNAMENTAL LIGHT.
 - (C) RELOCATE EXISTING SIGN ASSEMBLY TO NEW LOCATION.
 - (D) RELOCATE EXISTING "ANTIQUE" SIGN TO NEW LOCATION.
 - (E) RELOCATE EXISTING CITY "BUS STOP" SIGN TO NEW LOCATION.
 - (F) MOUNT TO PEDESTRIAN SIGNAL POLE.



W:\Projects\2023 - BROAD STREET SAFETY IMPROVEMENTS\Drawings\Sheet\SPM-102.dwg, SPM-102.rvt, 3/8/2024



Atlantic Street

Complete Street Reconstruction
Jianhong Wang, PE, PTOE, RSP1



- Decreased traffic volumes with relocation of I-95 NB Exit 8 ramp
- High pedestrian activity in Downtown with significant retail presence
- Increased pedestrian activity with new residential developments
- Major north-south bike network identified in Stamford Bike & Ped Plan
- Existing Transit Hub
- Connection between Stamford Transportation Center and Downtown
- Accommodate Veterans Park and Old Town Hall Rehabilitations and multimodal travel modes

Background

Why are we doing this project?



Goals

What are we trying to achieve?

Safety first

- Traffic calming to reduce vehicular travel speeds
- Improve safety for all roadway users
- Provide safe bicycle infrastructure
- Enhance pedestrian infrastructure
- Accommodate on-street parking
- Add green infrastructure



Project Details

What are we doing?

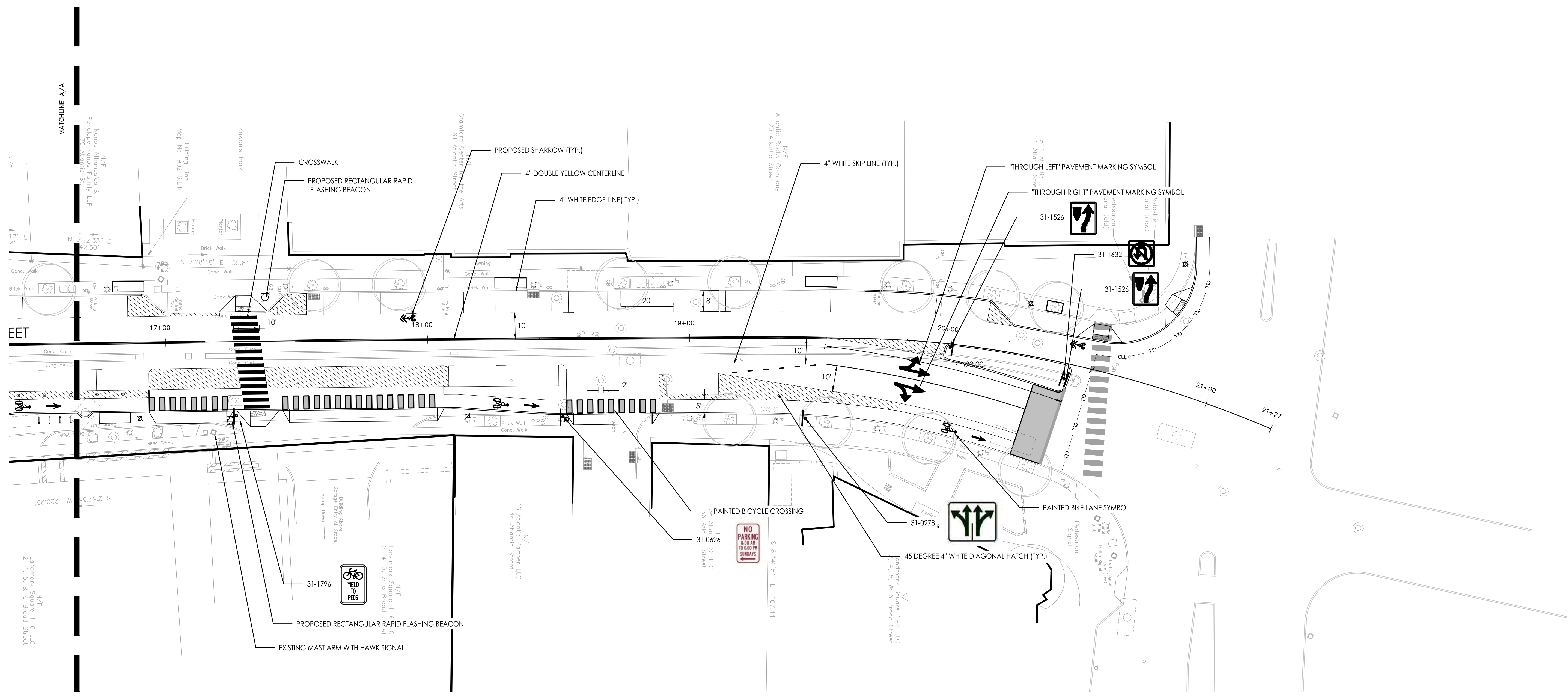
Making Atlantic Street a Safer, More Complete Street

- Remove one of the NB travel lane and median
- Install on-street parking protected bike lanes
- Build raised intersection at Atlantic and Main; Build raised midblock crosswalk near Kiwanis Park; Add curb extensions to reduce ped crossing distance
- Provide on-street parking on both sides of the road
- Build new bus shelters with amenities
- Current estimate: \$4.5m – 65% State funded
- Under Preliminary Design Phase
- Construction estimated in 2027

C

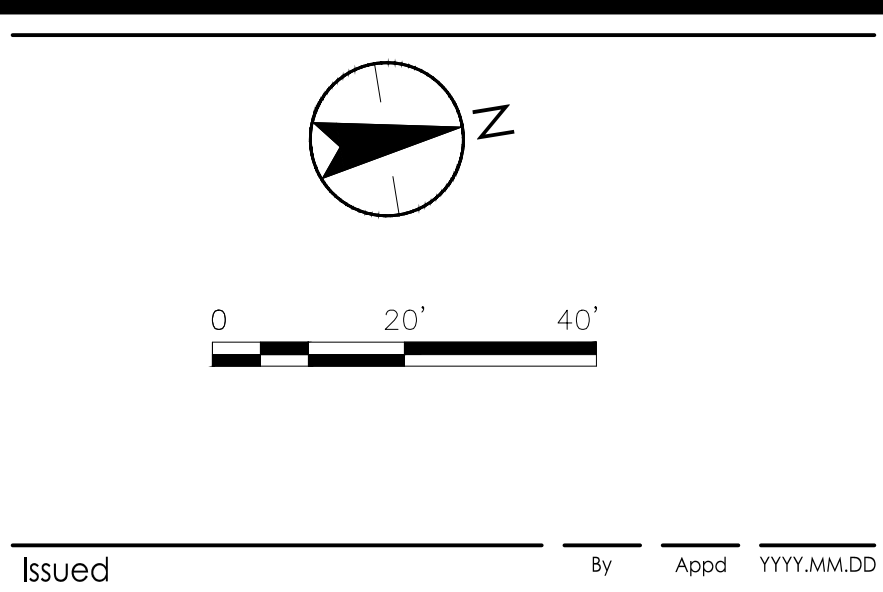
B

A



U:\19231144\Drawings\plan\sheet\c-105-1\SPM-01 signs and pavement marking plan.dwg
 2/20/20 12:28:28 PM
 ORIGINAL SHEET - ANSID

Revision	By	Appd	YYYY.MM.DD



Permit/Seal

**PRELIMINARY
NOT FOR
CONSTRUCTION**

Not for permits, pricing or other official purposes. This document has not been completed or checked and is for general information or comment only.

Consultant

Stantec
 Stantec Consulting Services Inc.
 55 Church Street, Suite 601
 New Haven CT 06510-3014
 Tel: 203.495.1645
 www.stantec.com
 Copyright Reserved
The Contractor shall verify and be responsible for all dimensions. DO NOT scale the drawing - any errors or omissions shall be reported to Stantec without delay. The Copyright to all designs and drawings are the property of Stantec. Reproduction or use for any purpose other than that authorized by Stantec is forbidden.



Client/Project

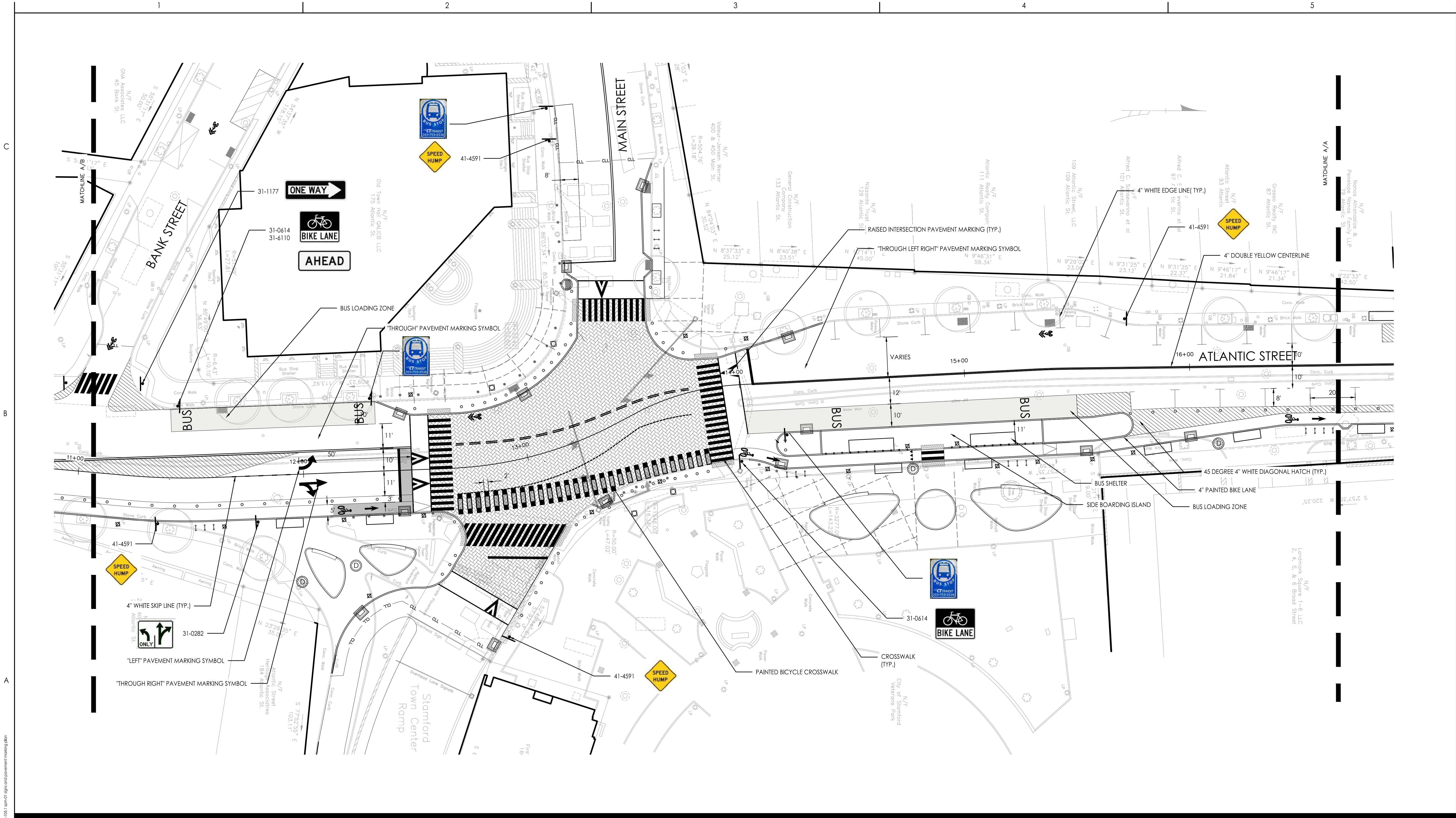
STAMFORD COMPLETE STREETS ATLANTIC STREET RECONSTRUCTION

CITY OF STAMFORD

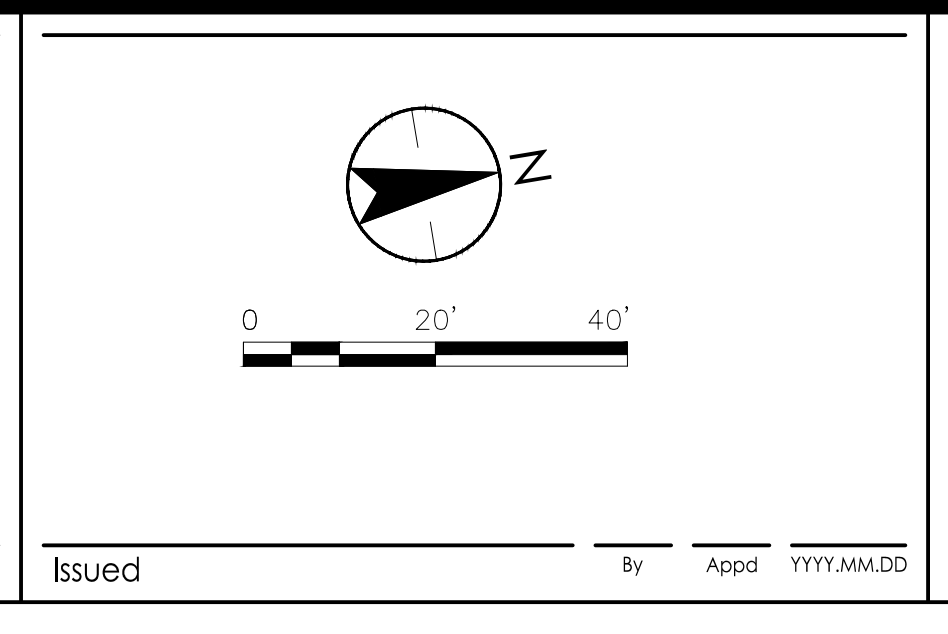
File Name: C-105.1 SPM-01 SIGNS AND PAVEMENT MARKING PLAN

Dwn. Dsgn. Chkd. YYYY.MM.DD

Title	
STAMFORD COMPLETE STREETS - SIGN AND PAVEMENT MARKINGS PLAN - 04	
Project No.	Scale
SPM-04	1" = 20'
Revision	Sheet
26	Drawing No. C-105.4



Revision	By	Appd	YYYY.MM.DD



Permit/Seal

**PRELIMINARY
NOT FOR
CONSTRUCTION**

Not for permits, pricing or other official purposes. This document has not been completed or checked and is for general information or comment only.

Consultant

Stantec Consulting Services Inc.
55 Church Street, Suite 601
New Haven CT 06510-3014
Tel: 203.495.1645
www.stantec.com

Copyright Reserved

The Contractor shall verify and be responsible for all dimensions. DO NOT scale the drawing - any errors or omissions shall be reported to Stantec without delay. The Copyrights to all designs and drawings are the property of Stantec. Reproduction or use for any purpose other than that authorized by Stantec is forbidden.



Client/Project Logo

Client/Project

STAMFORD COMPLETE STREETS ATLANTIC STREET RECONSTRUCTION

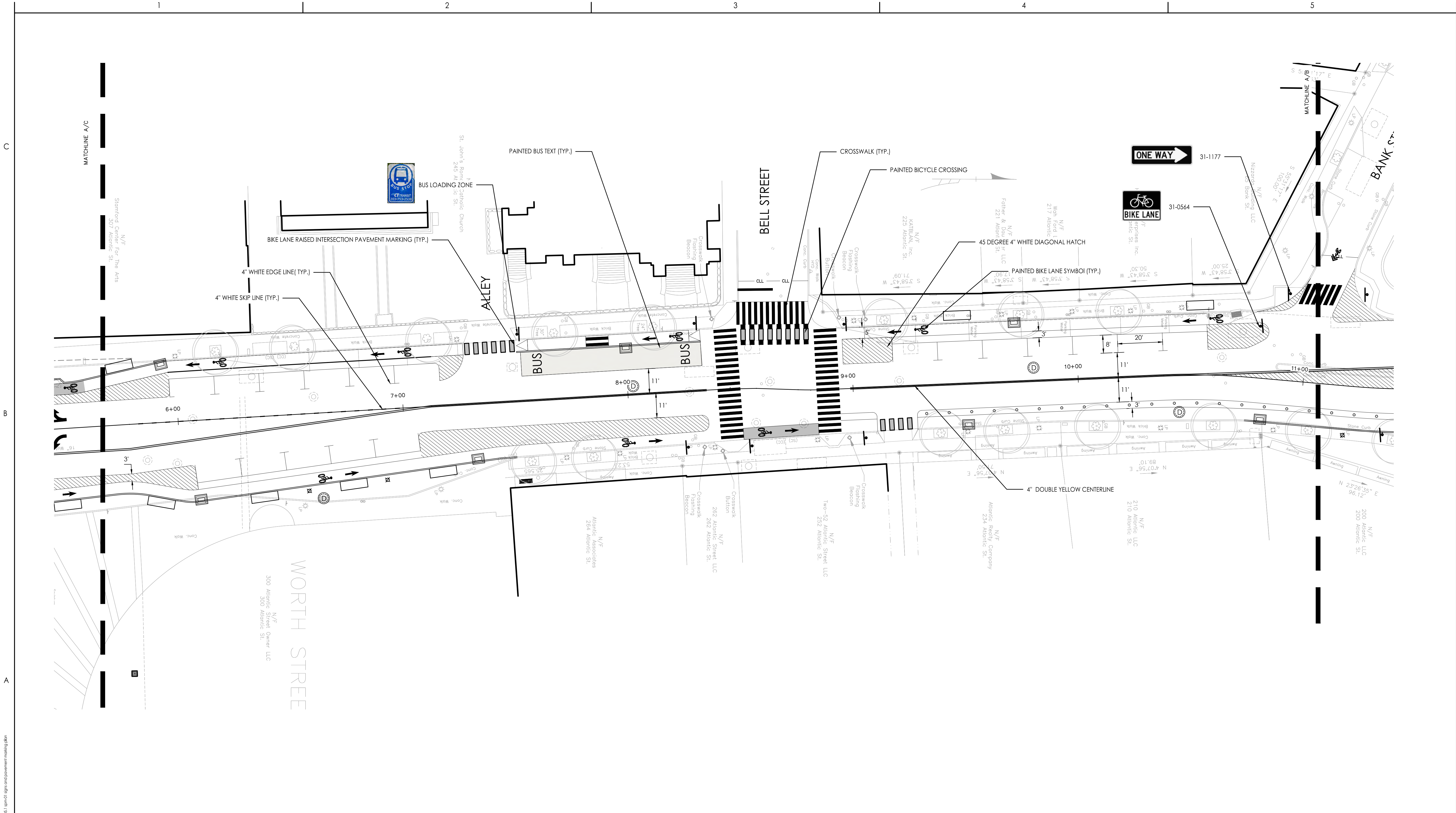
CITY OF STAMFORD

File Name: C-105.1 SPM-01 SIGNS AND PAVEMENT MARKING PLAN

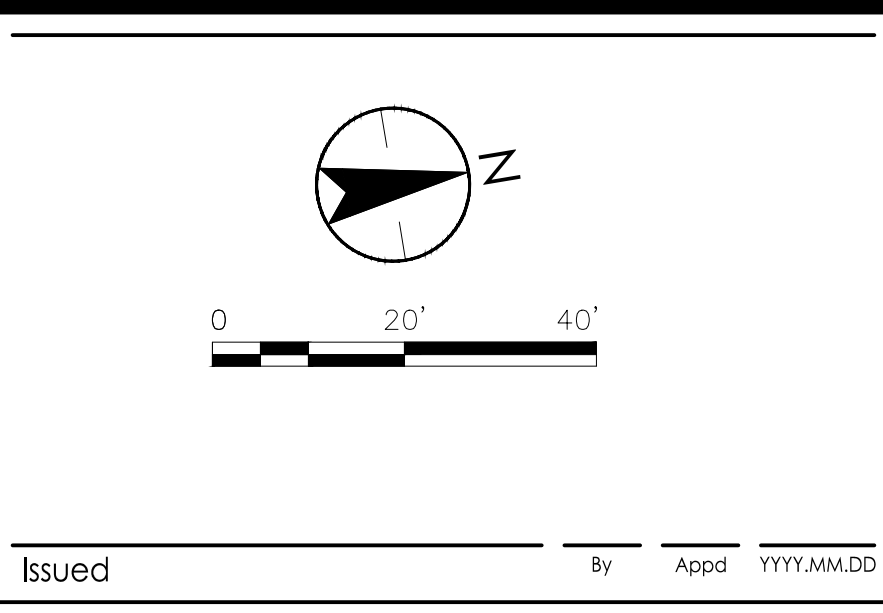
Dwn. Dsgn. Chkd. YYYY.MM.DD

Title	
STAMFORD COMPLETE STREETS - SIGN AND PAVEMENT MARKINGS PLAN - 03	
Project No.	Scale
SPM-03	1" = 20'
Revision Sheet	Drawing No.
25	C-105.3

U:\19231144\Drawings\abi\sheet\c-105.1\signs and pavement marking plan\c-105.1.spm-01 signs and pavement marking plan.dwg
 2/26/2017 12:26:27 PM



Revision	By	Appd	YYYY.MM.DD



Permit/Seal

**PRELIMINARY
NOT FOR
CONSTRUCTION**

Not for permits, pricing or other official purposes. This document has not been completed or checked and is for general information or comment only.

Consultant

Stantec Consulting Services Inc.
55 Church Street, Suite 601
New Haven CT 06510-3014
Tel: 203.495.1645
www.stantec.com

Copyright Reserved

The Contractor shall verify and be responsible for all dimensions. DO NOT scale the drawing - any errors or omissions shall be reported to Stantec without delay. The Copyrights to all designs and drawings are the property of Stantec. Reproduction or use for any purpose other than that authorized by Stantec is forbidden.



Client/Project

STAMFORD COMPLETE STREETS ATLANTIC STREET RECONSTRUCTION

CITY OF STAMFORD

File Name: C-105.1 SPM-01 SIGNS AND PAVEMENT MARKINGS PLAN

Dwn. Dsgn. Chkd. YYYY.MM.DD

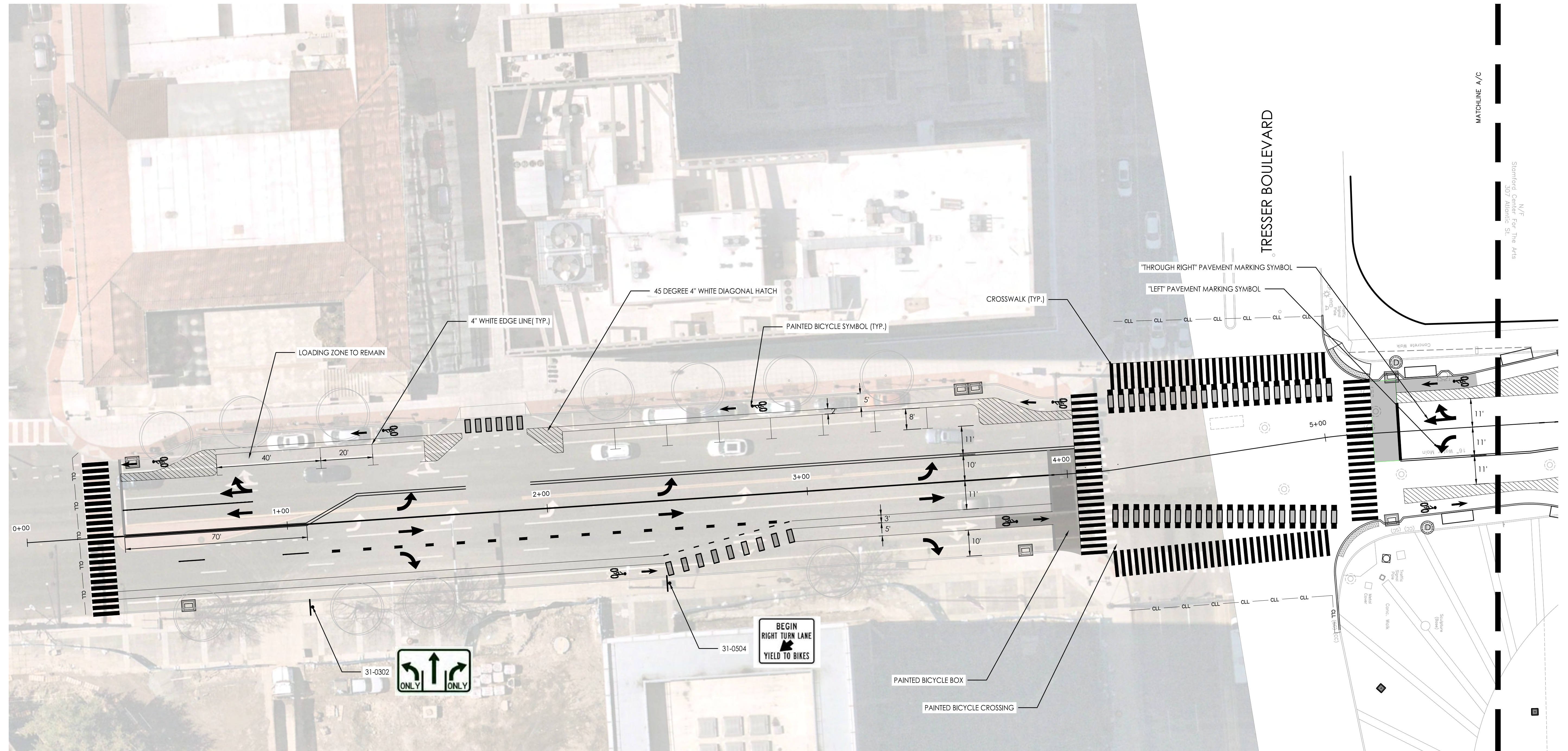
Title	
STAMFORD COMPLETE STREETS - SIGN AND PAVEMENT MARKINGS PLAN - 02	
Project No.	Scale
SPM-02	1" = 20'
Revision Sheet	Drawing No.
24	C-105.2

U:\Projects\1444\Drawings\abi\sheet\c-105\signage and pavement marking plans\c-105.1.spm-01 signs and pavement marking plan.dwg
 2/23/2017 12:28:38 PM

C

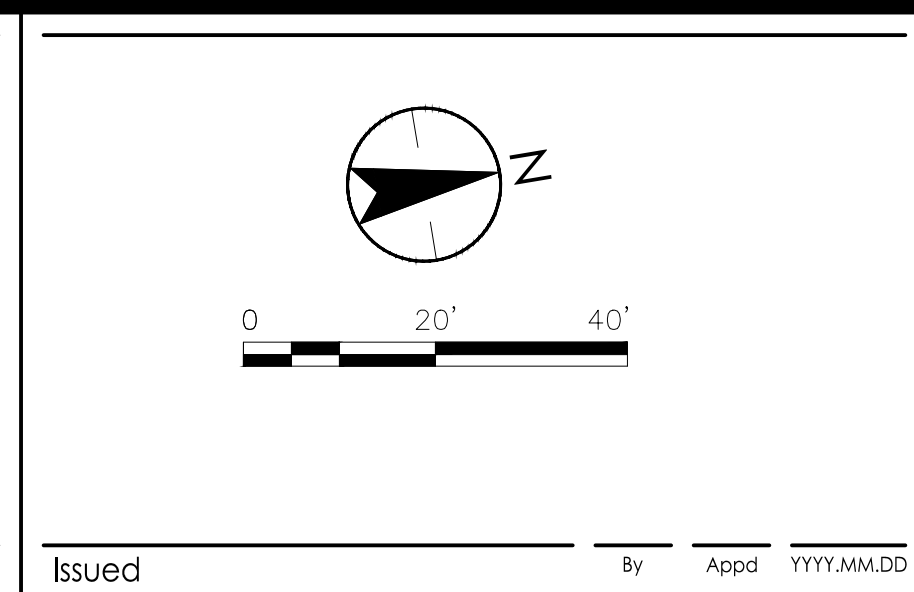
B

A



U:\19231\144\Drawings\abi\sheet\c105\signage and pavement marking plans\c105_1\spm-01 signs and pavement marking plan.dwg
 2/20/20 12:28 PM
 ORIGINAL SHEET - ANSI D

Revision	By	Appd	YYYY.MM.DD



Permit/Seal

**PRELIMINARY
NOT FOR
CONSTRUCTION**

Not for permits, pricing or other official purposes. This document has not been completed or checked and is for general information or comment only.

Consultant

Stantec Consulting Services Inc.
 55 Church Street, Suite 601
 New Haven CT 06510-3014
 Tel: 203.495.1645
 www.stantec.com

Copyright Reserved

The Contractor shall verify and be responsible for all dimensions. DO NOT scale the drawing - any errors or omissions shall be reported to Stantec without delay. The Copyright to all designs and drawings are the property of Stantec. Reproduction or use for any purpose other than that authorized by Stantec is forbidden.



Client/Project

STAMFORD COMPLETE STREETS ATLANTIC STREET RECONSTRUCTION

CITY OF STAMFORD

File Name: C-105_1 SPM-01 SIGNS AND PAVEMENT MARKING PLAN

Dwn. Dsgn. Chkd. YYYY.MM.DD

Title	
STAMFORD COMPLETE STREETS - SIGN AND PAVEMENT MARKINGS PLAN - 14	
Project No.	Scale
SPM-01	1" = 20'
Revision Sheet	Drawing No.
23	C-105.1



Thank You

Luke Bittenwieser



203-977-1742



LBittenwieser@StamfordCT.gov



Stephen Frycz



203-977-5675



SFrycz@StamfordCT.gov



Jianhong Wang, PE, PTOE, RSP1



203-977-4133



JWang@StamfordCT.gov



StamfordCT.gov

