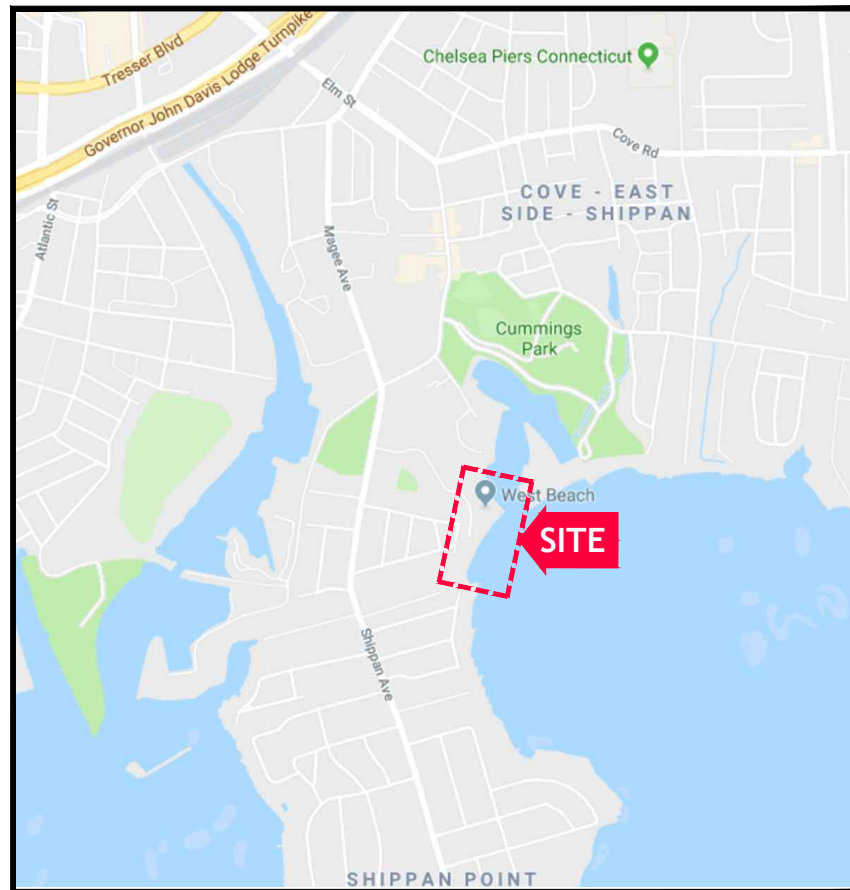


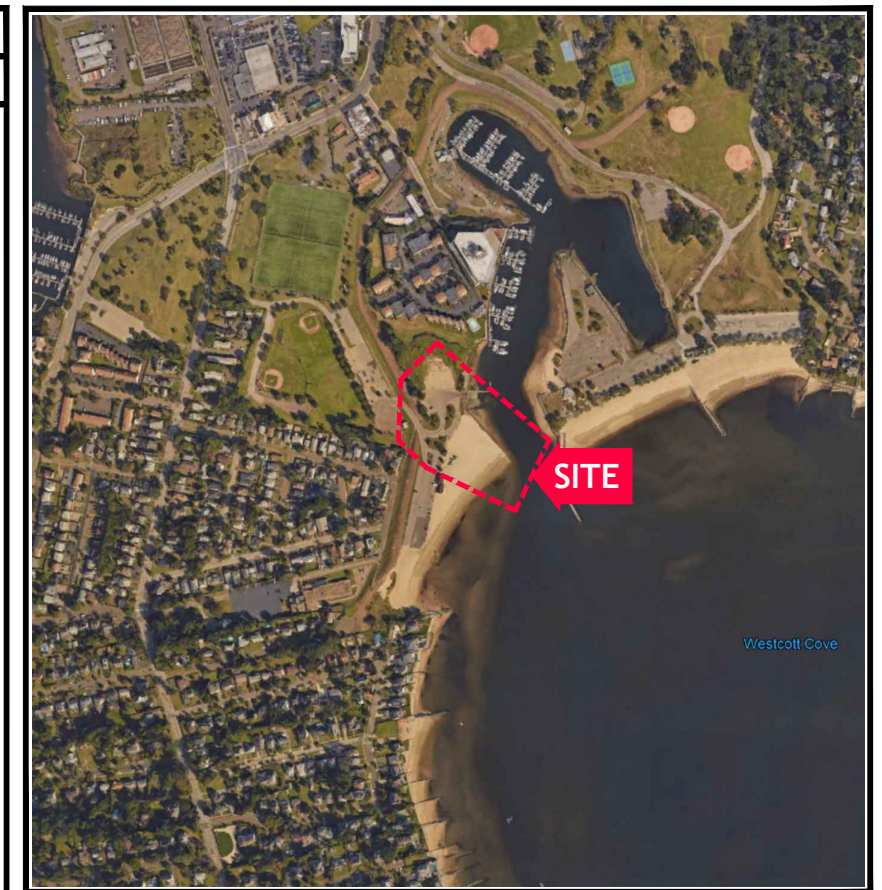
BOAT RAMP REPLACEMENT PROJECT

WEST BEACH CITY OF STAMFORD STAMFORD, CONNECTICUT



SITE VICINITY MAP

INDEX OF DRAWINGS				
CATEGORY	SHEET	DRAWING	TITLE	
GENERAL	1	G-01	TITLE, INDEX OF DRAWINGS, LOCATION AND VICINITY MAPS	
	2	G-02	LEGEND AND ABBREVIATIONS	
	3	G-03	GENERAL NOTES	
CIVIL	4	C-01	EXISTING CONDITIONS PLAN	
	4A	C-01A	EXISTING WETLANDS AND SAV SURVEY PLAN	
	5	C-02	IMPROVEMENTS PLAN	
	6	C-03	DEMOLITION AND REMOVAL PLAN	
	7	C-04	BOAT RAMP PLAN	
	8	C-05	IMPROVEMENTS DREDGING PLAN	
	9	C-06	PARKING LOT IMPROVEMENTS PLAN	
	SECTIONS AND DETAILS	10	C-07	SUGGESTED PHASING PLAN
		11	D-01	ROAD WIDENING PLAN AND SECTION
		12	D-02	BOAT RAMP SECTION AND PROFILE
		13	D-03	PROPOSED MUDLINE SECTIONS
14		D-04	BOAT RAMP DETAILS	
15		D-05	FLOATING DOCK SECTIONS AND DETAILS - 1	
16		D-06	FLOATING DOCK SECTIONS AND DETAILS - 2	
17		D-07	JETTY REPAIRS PLAN AND SECTION	
18		D-08	EROSION AND SEDIMENTATION CONTROL DETAILS	
19		D-09	MISCELLANEOUS DETAILS - 1	
20		D-10	MISCELLANEOUS DETAILS - 2	
20A	D-11	SUGGESTED TEMPORARY COFFERDAM INSTALLATION SEQUENCE AND MINIMUM REQUIRED DEWATERING ELEVATIONS		



SITE LOCATION MAP

**90% SUBMISSION
NOT FOR CONSTRUCTION**

THIS DRAWING IS HALF SIZE

CIVIL LEGEND

EXISTING	PROPOSED	DESCRIPTION
		BASELINE
		SURVEY CONTROL POINT
		MHW
		MLW
		HTL
		CTDEEP CJL
		CONTOUR LINES
		EDGE OF PAVEMENT / CURBING
		MARKER ROPE
		STRAW BALES / SILT SOCK
		DREDGE BOUNDARY
		FEMA FLOOD ZONE BOUNDARY
		SPOT GRADE ELEVATION
		DEMOLITION AND REMOVAL LIMITS
		RIPRAP
		RETAINING WALL
		MAN HOLE
		HAND HOLE
		PRECAST CONCRETE BOAT RAMP PLANK
		FLOATING DOCK
		TURBIDITY BARRIER
		TEMPORARY EARTH RETAINING SYSTEM/COFFERDAM
		BUILDING
		VEGETATION
		DEWATERING PUMP
		DEWATERING BAG
		TIMBER PILE
		ASPHALT
		TREE
		ROW OF BOULDERS
		SAWCUT
		ROCK OUTCROP
		FEDERAL CHANNEL
		STORM SEWER

EXISTING	PROPOSED

SOIL BORINGS PERFORMED BY NEW ENGLAND BORING FOR RTG (DECEMBER 18-19, 2018)

VIBROCORE SAMPLES PERFORMED BY ANDREW CAVANAGH MARINE FOR RTG (DECEMBER 17, 2018)

GRAB SAMPLE PERFORMED BY RTG (DECEMBER 17, 2018)

MINIMUM REQUIRED DEWATERING ELEVATION

ABBREVIATIONS

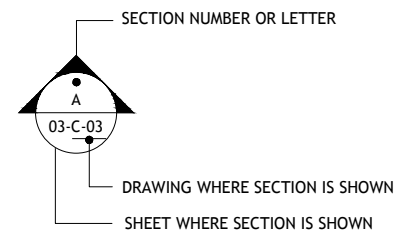
AC	ACRES
APPROX.	APPROXIMATE
BLDG.	BUILDING
CI	CAST IRON
CIP	CAST IN PLACE
C.J.	CONSTRUCTION JOINT
CJL	CT DEEP COASTAL JURISDICTION LINE
CONC.	CONCRETE
DIA.	DIAMETER
EL.	ELEVATION
E.J.	EXPANSION JOINT
E.O.P.	EDGE OF PAVEMENT
EPC	EPOXY COATED
EXIST	EXISTING
FT	FEET
F&I	FURNISH AND INSTALL
HDPE	HIGH DENSITY POLYETHYLENE
HORIZ	HORIZONTAL
LF	LINEAR FEET
LINE.	LINER
MAX.	MAXIMUM
MIN.	MINIMUM
MHW	MEAN HIGH WATER
MHHW	MEAN HIGHER HIGH WATER
MLW	MEAN LOW WATER
MLLW	MEAN LOWER LOW WATER
NAD 83	NORTH AMERICAN DATUM OF 1983
NAVD 88	NORTH AMERICAN VERTICAL DATUM OF 1988
NGVD 29	NATIONAL GEODETIC VERTICAL DATUM OF 1929
NIC	NOT IN CONTRACT
NTS	NOT TO SCALE
O.C.	ON CENTER
O.C.E.W.	ON CENTER EACH WAY
P&M	PROTECT AND MAINTAIN
PL	PROPERTY LINE
PVC	POLYVINYL CHLORIDE
REQD	REQUIRED
ROW	RIGHT OF WAY
R&D	REMOVE AND DISPOSE
R&R	REMOVE AND REINSTALL
R&S	REMOVE AND STOCKPILE
SHL	STATE HIGHWAY LINE
SOE	SUPPORT OF EXCAVATION
S&T	SHRINKAGE AND TEMPERATURE
TBD	TO BE DETERMINED
TEMP.	TEMPORARY
TRAP.	TRAPEZOIDAL
TYP.	TYPICAL
UK	UNKNOWN
VERT	VERTICAL

	NAVD 88	MLW
CJL	5.50	9.10
HTL	4.50	8.10
MHHW	3.48	7.08
MHW	3.15	6.75
NAVD '88	0.00	3.60
MLW	-3.60	0.00
MLLW	-3.84	-0.24

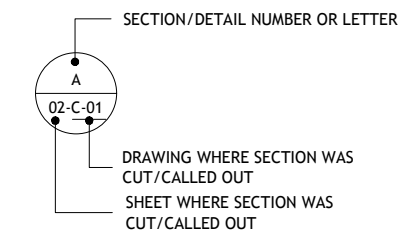
VERTICAL DATUM CONVERSION DIAGRAM

VERTICAL DATUM NOTES:

- THE TIDAL DATA SHOWN WAS TAKEN FROM THE U.S. DEPARTMENT OF COMMERCE, NATIONAL OCEANIC AND ATMOSPHERIC ADMINISTRATION (NOAA) ONLINE VERTICAL DATUM TRANSFORMATION PROGRAM, DETERMINED AT THE FOLLOWING LOCATION:
 LOCATION: Bridgeport, Connecticut
 LATITUDE: 41.175 N
 LONGITUDE: 73.183 W



SECTION / DETAIL



DETAIL AND SECTION DESIGNATION

RTG CONTROL POINT DATA				
POINT NO.	NORTHING	EASTING	ELEVATION (NAVD88)	DESCRIPTION
RTG-PK-01	786775.2571	575876.5101	8.0780	PK NAIL SET IN ASPHALT
RTG-PK-02	786834.9936	575918.3028	6.8700	PK NAIL SET IN ASPHALT
RTG-PK-03	786875.6760	575975.1370	6.4170	PK NAIL SET IN ASPHALT
RTG-PK-04	786724.9344	575953.5762	8.7740	PK NAIL SET IN ASPHALT
RTG-PK-05	786777.9400	575448.1776	9.5320	PK NAIL SET IN ASPHALT
RTG-PK-06	786797.8436	575591.8181	9.9170	PK NAIL SET IN ASPHALT

**90% SUBMISSION
NOT FOR CONSTRUCTION**

THIS DRAWING IS HALF SIZE

rtg RT Group, Inc.
 Engineered from the Ground UpSM
 458 Grand Avenue, Suite 213
 New Haven, Connecticut 06513
 T 203 823 9932 F 401 294 9806
DAM SAFETY - WATERFRONT - CONSTRUCTION ENGINEERING - GEOTECHNICAL
 GEO-ENVIRONMENTAL - STRUCTURAL - CIVIL

DSGN	JBR
DR	DBH
CHK	GJC
APVD	JBR

No.	DATE	BY	APVD

BAR IS ONE INCH ON ORIGINAL DRAWING.
 0 1"
 IF NOT ONE INCH ON THIS SHEET, ADJUST SCALES ACCORDINGLY



BOAT RAMP REPLACEMENT PROJECT
WEST BEACH
 CITY OF STAMFORD
 Stamford, Connecticut

LEGEND AND ABBREVIATIONS

SHEET	2 OF 20
DWG No.	G-02
DATE	JAN 2019
PROJ No.	18103.00

THIS DRAWING IS HALF SIZE
90% SUBMISSION
NOT FOR CONSTRUCTION

GENERAL NOTES:

- THE UTILITY LOCATIONS SHOWN ON THESE DRAWINGS ARE CONSIDERED APPROXIMATE AND WERE OBTAINED FROM THE BEST INFORMATION AVAILABLE. THE ACTUAL LOCATION OF UTILITIES MAY VARY FROM THAT SHOWN AND THE CONTRACTOR SHALL BE RESPONSIBLE FOR VERIFYING THE LOCATIONS OF ALL UTILITIES, GRADES, AND DIMENSIONS PRIOR TO STARTING WORK.
- THE TOPOGRAPHIC AND BATHYMETRIC INFORMATION SHOWN ON THESE DRAWINGS IS BASED ON SITE SURVEYS COMPLETED BY RT GROUP, INC. (RTG) ON JULY 5, 2018, JULY 19, 2018, AND AUGUST 10, 2018. A PROPERTY LINE SURVEY WAS NOT PERFORMED BY RTG.
- IT SHALL BE THE CONTRACTOR'S RESPONSIBILITY TO CONTACT "CALL BEFORE YOU DIG" (1-888-922-4455) A MINIMUM OF THREE (3) BUSINESS DAYS BEFORE COMMENCING WITH ANY EXCAVATION/GRADING, IN ORDER THAT ALL AFFECTED UTILITY COMPANIES ARE NOTIFIED PRIOR TO STARTING WORK.
- CONSTRUCTION LIMITS COINCIDE WITHIN PROPERTY LINE LIMITS AS SHOWN ON THE DRAWINGS.
- THE CONTRACTOR SHALL BE SOLELY AND COMPLETELY RESPONSIBLE FOR CONDITIONS OF THE JOB SITE, INCLUDING THE SAFETY OF ALL PERSONS AND PROPERTY DURING THE PERFORMANCE OF THE WORK. SAFETY PROVISIONS SHALL COMPLY WITH OSHA AND OTHER APPLICABLE FEDERAL, STATE, AND LOCAL LAWS AND REGULATIONS. THESE REQUIREMENTS SHALL APPLY CONTINUOUSLY AND SHALL NOT BE LIMITED TO NORMAL WORKING HOURS.
- STANDARD SPECIFICATIONS, WHEN REFERENCED IN THESE DRAWINGS, SHALL MEAN THE CONNECTICUT DEPARTMENT OF TRANSPORTATION STANDARD SPECIFICATIONS FOR ROAD AND BRIDGE CONSTRUCTION (2010 ED). PARTS OF THE STANDARD SPECIFICATIONS THAT ARE SPECIFICALLY REFERENCED SHALL BECOME PART OF THESE DRAWINGS AS THOUGH STATED HEREIN IN FULL. IN CASE OF A DISCREPANCY BETWEEN THE STANDARD SPECIFICATIONS AND THE REQUIREMENTS STATED WITHIN THE DRAWINGS, THE REQUIREMENTS STATED WITHIN THE DRAWINGS SHALL PREVAIL.
- THIS PROJECT IS OWNED AND FUNDED BY THE CITY OF STAMFORD (THE CITY). THEREFORE, SOME OF THE REFERENCES AND TERMINOLOGY OF THE STANDARD SPECIFICATIONS MAY SEEM OUT OF PLACE. THE OWNER IS THE CITY OF STAMFORD. THE ENGINEER FOR THIS PROJECT IS RT GROUP, INC. (RTG). THE CONNECTICUT DEPARTMENT OF TRANSPORTATION IS NOT A PARTY TO THE PROJECT.
- THE CONTRACTOR SHALL MAINTAIN AND NOT HINDER ACCESS TO WEST BEACH AND THE FEDERAL CHANNEL DURING THE PERFORMANCE OF THIS WORK.
- WEST BEACH IS LOCATED WITHIN A FEMA FLOOD ZONE AE AND WILL BE INUNDATED DURING THE 100 YEAR FLOOD. THE 100 YEAR FLOOD ELEVATION IS ESTIMATED AT ABOUT 14.0 FEET NAVD '88 AS SHOWN ON THE FAIRFIELD COUNTY FLOOD INSURANCE RATE MAP (FIRM) NO. 09001C0517G, COMMUNITY PANEL NUMBER 0517G, REVISED DATE: JULY 8, 2013.
- THE CONTRACTOR SHALL VERIFY ALL EXISTING CONDITIONS AND DIMENSIONS IN THE FIELD BEFORE ORDERING ANY MATERIAL, COMMENCING ANY FABRICATION, OR PERFORMING ANY WORK. THE CONTRACTOR SHALL NOTIFY THE ENGINEER, IN WRITING, OF ANY CONDITIONS OR DIMENSIONS WHICH VARY FROM THOSE SHOWN IN THE DRAWINGS AND INCORPORATE SUCH VARIATIONS IN THE CONSTRUCTION AS APPROVED BY THE ENGINEER.
- RIGHT-OF-WAY LINES, LEASE LINES, PROPERTY LINES, AND EASEMENT LINES, WHEN SHOWN ON THESE DRAWINGS, ARE CONSIDERED APPROXIMATE.

LAYOUT WORK:

- THE HORIZONTAL CONTROL DATUM FOR THIS PROJECT IS NAD '83.
- THE VERTICAL CONTROL DATUM FOR THIS PROJECT IS NAVD '88.
- THE CONTRACTOR SHALL BE RESPONSIBLE FOR PERFORMING ALL LAYOUT WORK USING THE INFORMATION PROVIDED.

AVAILABLE SUBSURFACE INFORMATION:

- IT IS INTENDED THAT SUBSURFACE INFORMATION, AS INCLUDED AND SHOWN IN THE CONTRACT DOCUMENTS, BE USED ONLY AS AN INDICATION OF POSSIBLE SUBSURFACE CONDITIONS, AND THAT UPON THE CONTRACTOR'S REVIEW, FURTHER SUBSURFACE EXPLORATIONS MAY BE WARRANTED. SUCH EXPLORATIONS SHALL BE PERFORMED AT THE CONTRACTOR'S EXPENSE.
- THE CONTRACTOR SHALL USE THE SUBSURFACE INFORMATION SHOWN IN THE CONTRACT DOCUMENTS AT ITS OWN RISK AND SHALL COMPLETELY HOLD HARMLESS THE CITY AND RTG FROM ALL CONSEQUENCES AND/OR FAULT ARISING FROM ITS USE.

DESIGN CRITERIA:

BOAT RAMP/PARKING LOT IMPROVEMENTS

- THE PROPOSED BOAT RAMP PLANKS ARE RATED FOR HS-20 LOADING.
- THE PROPOSED BOAT RAMP AND PARKING LOT IMPROVEMENTS HAVE BEEN DESIGNED TO ACCOMMODATE MOTOR BOATS UP TO 35-FEET IN LENGTH, ON TRAILERS UP TO 40-FEET IN LENGTH, AND A TOW VEHICLE (FULL SIZE PICKUP TRUCK ASSUMED) UP TO 20-FEET IN LENGTH.

FLOATING DOCK

- THE FLOATING DOCK HAS BEEN DESIGNED BASED ON THE FOLLOWING DESIGN CRITERIA:
 - THE FLOATING DOCK SHALL HAVE A MINIMUM FREEBOARD OF ABOUT 25 INCHES UNDER ITS SELF-WEIGHT AND ABOUT 15 INCHES UNDER ITS SELF-WEIGHT AND A LIVE LOAD OF 40 PSF.

TIMBER GUIDE PILES

- THE TIMBER GUIDE PILES HAVE BEEN DESIGNED ASSUMING THE FOLLOWING VESSEL COULD UTILIZE THE FLOATING DOCKS:
 - DESIGN VESSEL, L = 35', B = 13'
 - WAVE FORCE = 2.0 KIPS (VESSEL MOORED BROADSIDE AND WAVE HEIGHT = 3')
 - WIND FORCE = 2.0 KIPS (VESSEL MOORED BROADSIDE AND WIND VELOCITY = 50 MPH)
 - IMPACT FORCE = 1.0 KIPS (VESSEL IMPACTS THE FLOATING DOCK AT MID-POINT AT 1 FPS)

THE ABOVE DESIGN VESSEL WILL TRANSFER AN ESTIMATED MAXIMUM LATERAL LOAD OF ABOUT 0.70 KIPS TO THE GUIDE PILES, ASSUMING A MINIMUM OF THREE (3) GUIDE PILES ARE ENGAGED UNDER ITEM II.
- THE FLOATING DOCK SHALL BE DETACHED FROM THE GUIDE PILES AND MOVED TO AN UPLAND LOCATION BY THE CITY FOR CONDITIONS THAT PRODUCE LOADS GREATER THAN THOSE PRESENTED ABOVE, (E.G., SIGNIFICANT STORM EVENTS, HURRICANES, ETC.).

TIMBER JETTY REPAIRS

- THE PROPOSED TIMBER JETTY REPAIRS ARE ASSUMED TO BE AN "IN-KIND" REPAIR DESIGNED TO MAINTAIN THE EXISTING FUNCTIONALITY OF THE TIMBER JETTY.

STRUCTURAL LUMBER:

- ALL DECKING SHALL BE SOUTHERN YELLOW PINE, GRADE NO. 2 AND ALL STRINGERS AND BLOCKING SHALL BE SOUTHERN YELLOW PINE, GRADE NO. 1, CONFORMING TO THE FOLLOWING MINIMUM ALLOWABLE STRESSES IN ACCORDANCE WITH NDS.

ALLOWABLE STRESSES				
COMPONENT	EXTREME FIBER IN BENDING F _b (psi)	HORIZONTAL SHEAR F _v (psi)	COMPRESSION PERPENDICULAR TO GRAIN F _{c1} (psi)	COMPRESSION PARALLEL TO GRAIN F _c (psi)
DECKING	1,000	175	565	1,400
STRINGERS	1,050	175	565	1,450
BLOCKING	1,050	175	565	1,450

- ALL TIMBER DIMENSIONS SHOWN ARE NOMINAL.
- ALL TIMBER MATERIAL IN CONTACT WITH THE WATER SHALL BE CCA TREATED TO 2.0 PCF (MIN). ALL TIMBER IN THE SPLASH ZONE (STRINGERS, BLOCKING, AND DECKING) SHALL BE CCA TREATED TO 0.60 PCF (MIN).
- ALL PRESSURE TREATED TIMBER THAT HAS BEEN FIELD CUT, DRESSED, AND/OR DRILLED SHALL BE COATED WITH TWO (2) COATS OF COPPER NAPHTHENATE PRESERVATIVE, INCLUDING THE ENDS OF ANY SPLICED SEGMENTS.

MISCELLANEOUS METALS:

- ALL BOLTS USED IN TIMBER CONSTRUCTION SHALL BE HOT-DIPPED GALVANIZED, A307 GRADE A BOLTS. ALL THREADED ROD SHALL BE HOT-DIPPED GALVANIZED A36 STEEL.
- ALL MISC. STEEL HARDWARE USED IN TIMBER CONSTRUCTION SHALL BE HOT-DIPPED GALVANIZED A36 STEEL (MIN).
- DECK BOARD FASTENERS SHALL BE 4" STAINLESS STEEL DECK SCREWS (20D).

COORDINATION AND SITE CONDITIONS:

- COORDINATE WITH THESE DRAWINGS AND SECTION 01040, COORDINATION AND SITE CONDITIONS.

PROJECT MEETINGS:

- COORDINATE WITH THESE DRAWINGS AND SECTION 01200, PROJECT MEETINGS.

SUBMITTALS:

- COORDINATE WITH THESE DRAWINGS AND SECTION 01340, SUBMITTALS.

QUALITY CONTROL:

- COORDINATE WITH THESE DRAWINGS AND SECTION 01400, QUALITY CONTROL.

TEMPORARY CONSTRUCTION FACILITIES:

- COORDINATE WITH THESE DRAWINGS AND SECTION 01500, TEMPORARY CONSTRUCTION FACILITIES.

TEMPORARY UTILITIES:

- COORDINATE WITH THESE DRAWINGS AND SECTION 01510, TEMPORARY UTILITIES.

TEMPORARY CONTROLS:

- COORDINATE WITH THESE DRAWINGS AND SECTION 01560, TEMPORARY CONTROLS.

PROJECT RECORD DOCUMENTS:

- COORDINATE WITH THESE DRAWINGS AND SECTION 01720, PROJECT RECORD DOCUMENTS.

MOBILIZATION/DEMOLITION:

- COORDINATE WITH THESE DRAWINGS AND SECTION 02005, MOBILIZATION/DEMOLITION.

DEMOLITION AND REMOVAL:

- COORDINATE WITH THESE DRAWINGS AND SECTION 02050, DEMOLITION AND REMOVAL.

EARTHWORK:

- COORDINATE WITH THESE DRAWINGS AND SECTION 02200, EARTHWORK.
- THE FINAL SLOPE GEOMETRY AND THE PROTECTION OF EXISTING STRUCTURES AND UTILITIES ADJACENT TO THE WORK AREA IS THE CONTRACTOR'S RESPONSIBILITY.

DREDGING AND DISPOSAL OF MATERIAL:

- COORDINATE WITH THESE DRAWINGS AND SECTION 02203, DREDGING AND DISPOSAL OF MATERIAL.

EROSION AND SEDIMENT CONTROL:

- COORDINATE WITH THESE DRAWINGS AND SECTION 02270, EROSION AND SEDIMENT CONTROL.

TEMPORARY EARTH RETAINING SYSTEMS AND COFFERDAMS:

- COORDINATE WITH THESE DRAWINGS AND SECTION 02300, TEMPORARY EARTH RETAINING SYSTEMS AND COFFERDAMS.

TIMBER GUIDE PILES:

- COORDINATE WITH THESE DRAWINGS AND SECTION 02368, TIMBER GUIDE PILES.

DEWATERING, CONTROL, AND DIVERSION OF WATER:

- COORDINATE WITH THESE DRAWINGS AND SECTION 02400, DEWATERING, CONTROL, AND DIVERSION OF WATER.
- CONSTRUCTION OF THE BOAT RAMP, INCLUDING THE PLACEMENT OF ALL EARTH AND STONE MATERIALS, SHALL BE COMPLETED IN THE "DRY", UNLESS OTHERWISE ALLOWED PER SHEET 20A.
- DEWATERING PUMPS SHALL BE MULTIQUIP ST3020BCUL 170 GPM ELECTRIC SUBMERSIBLE WATER PUMP OR APPROVED EQUAL. ALL PUMPS SHALL BE CAPABLE OF DRY RUNNING.
- DISCHARGE LINES SHALL BE APACHE 3" PVC LAY FLAT HOSES OR APPROVED EQUAL.
- THE CONTRACTOR SHALL ROUTE ALL PUMPED WATER TO DEWATERING BASINS OR OTHER SUITABLE DEVICES (E.G., DEWATERING BAGS) PRIOR TO ALLOWING THE PUMPED WATER TO OVER LAND FLOW.

BITUMINOUS CONCRETE PAVEMENT:

- COORDINATE WITH THESE DRAWINGS AND SECTION 02512, BITUMINOUS CONCRETE PAVEMENT.

LAWNS AND LANDSCAPING:

- COORDINATE WITH THESE DRAWINGS AND SECTION 02900, LAWNS AND LANDSCAPING.

REINFORCING STEEL:

- COORDINATE WITH THESE DRAWINGS AND SECTION 03200, REINFORCING STEEL.

CAST-IN-PLACE CONCRETE:

- COORDINATE WITH THESE DRAWINGS AND SECTION 03310, CONCRETE.

PRECAST CONCRETE STRUCTURES:

- COORDINATE WITH THESE DRAWINGS AND SECTION 03399, PRECAST CONCRETE STRUCTURES.

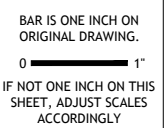
STOCKPILE MANAGEMENT:

- EXCAVATED MATERIAL GENERATED DURING THE EXECUTION OF THIS WORK SHALL BE STOCKPILED WITHIN THE TEMPORARY CONTAINMENT FACILITY.
- THE CONTRACTOR SHALL MAINTAIN STOCKPILES AND THE AREAS AROUND THEM GRADED TO DRAIN AND TAKE ALL NECESSARY PRECAUTIONS TO MINIMIZE EROSION FROM THE STOCKPILES INCLUDING BUT NOT LIMITED TO THE INSTALLATION OF HAY BALES OR SILT FENCE.
- SOIL MATERIAL THAT MEETS THE SPECIFIED GRADATION REQUIREMENTS UNDER EARTHWORK, MAY BE STOCKPILED FOR REUSE.
- EXCESS EARTH MATERIAL THAT DOES NOT MEET THE SPECIFIED GRADATION REQUIREMENTS AND/OR EXCAVATED MATERIAL IN EXCESS OF THAT REQUIRED FOR COMPLETING THIS PROJECT SHALL BE TRUCKED, UNLOADED, AND STOCKPILED AT CUMMINGS PARK AS DIRECTED BY THE ENGINEER. ALL DEMOLITION DEBRIS SHALL BE DISPOSED OF OFF-SITE IN ACCORDANCE WITH ALL LOCAL, STATE, AND FEDERAL LAWS AND REGULATIONS.

RT Group, Inc.
Engineered from the Ground UpSM
458 Grand Avenue, Suite 213
New Haven, Connecticut 06513
T 203 823 9932 F 401 294 9806

DAM SAFETY - WATERFRONT - CONSTRUCTION ENGINEERING - GEOTECHNICAL
GEO-ENVIRONMENTAL - STRUCTURAL - CIVIL

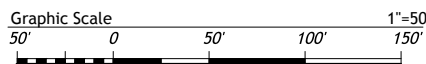
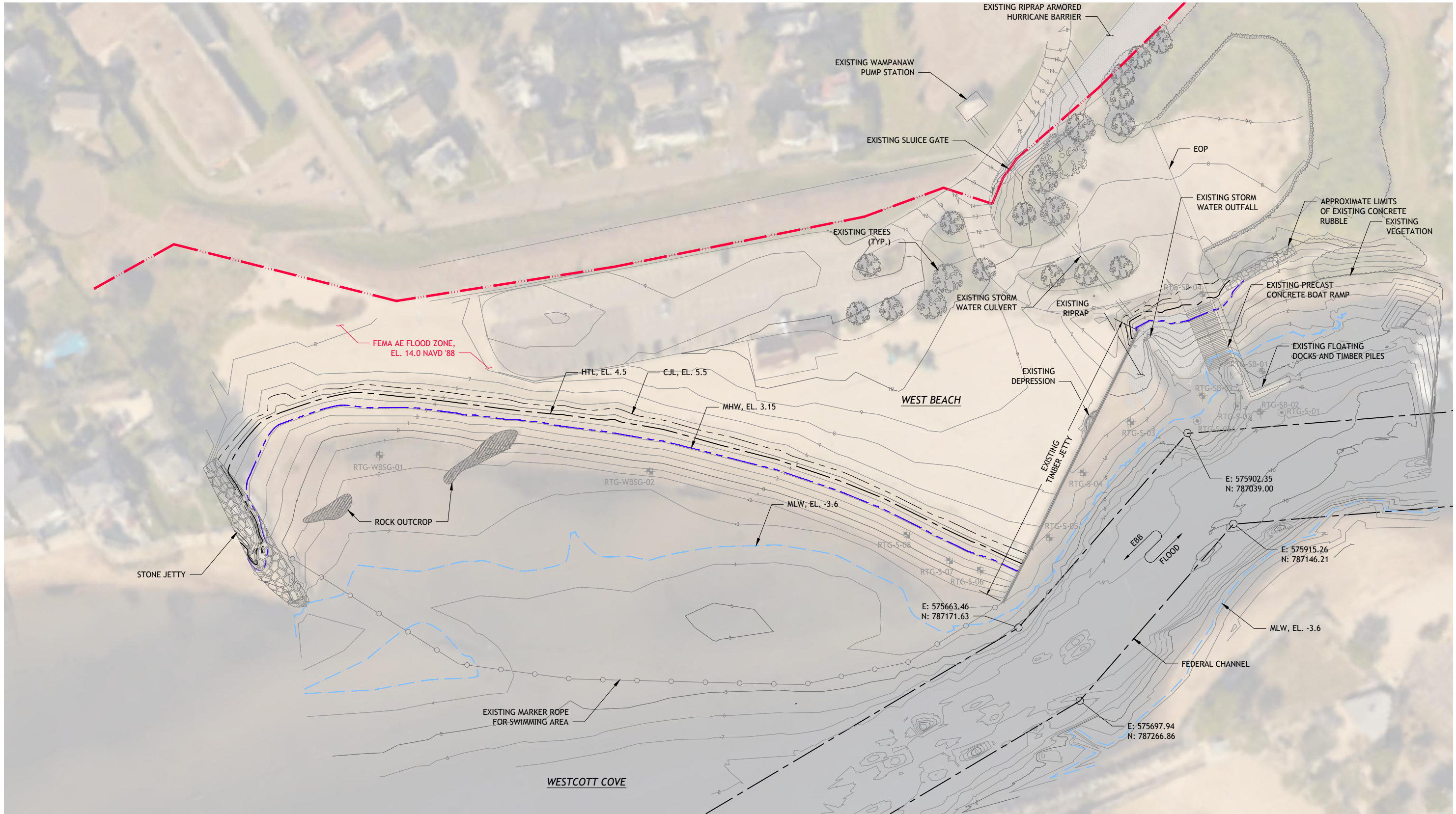
DSGN	JBR				
DR	DBH				
CHK	GJC				
APVD	JBR	No.	DATE	BY	APVD



BOAT RAMP REPLACEMENT PROJECT
WEST BEACH
CITY OF STAMFORD
Stamford, Connecticut

GENERAL NOTES

SHEET	3 OF 20
DWG No.	G-03
DATE	JAN 2019
PROJ No.	18103.00



OVERALL SITE PLAN
SCALE: 1"=50'-0"

**90% SUBMISSION
NOT FOR CONSTRUCTION**

THIS DRAWING IS HALF SIZE

rtg RT Group, Inc.
Engineered from the Ground UpSM
458 Grand Avenue, Suite 213
New Haven, Connecticut 06513
T 203 823 9932 F 401 294 9806
DAM SAFETY - WATERFRONT - CONSTRUCTION ENGINEERING - GEOTECHNICAL
GEO-ENVIRONMENTAL - STRUCTURAL - CIVIL

DSGN	JBR				
DR	DBH				
CHK	GJC				
APVD	JBR	No.	DATE	BY	APVD

BAR IS ONE INCH ON ORIGINAL DRAWING.
0 1"
IF NOT ONE INCH ON THIS SHEET, ADJUST SCALES ACCORDINGLY

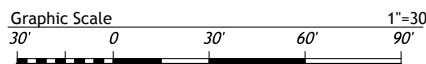
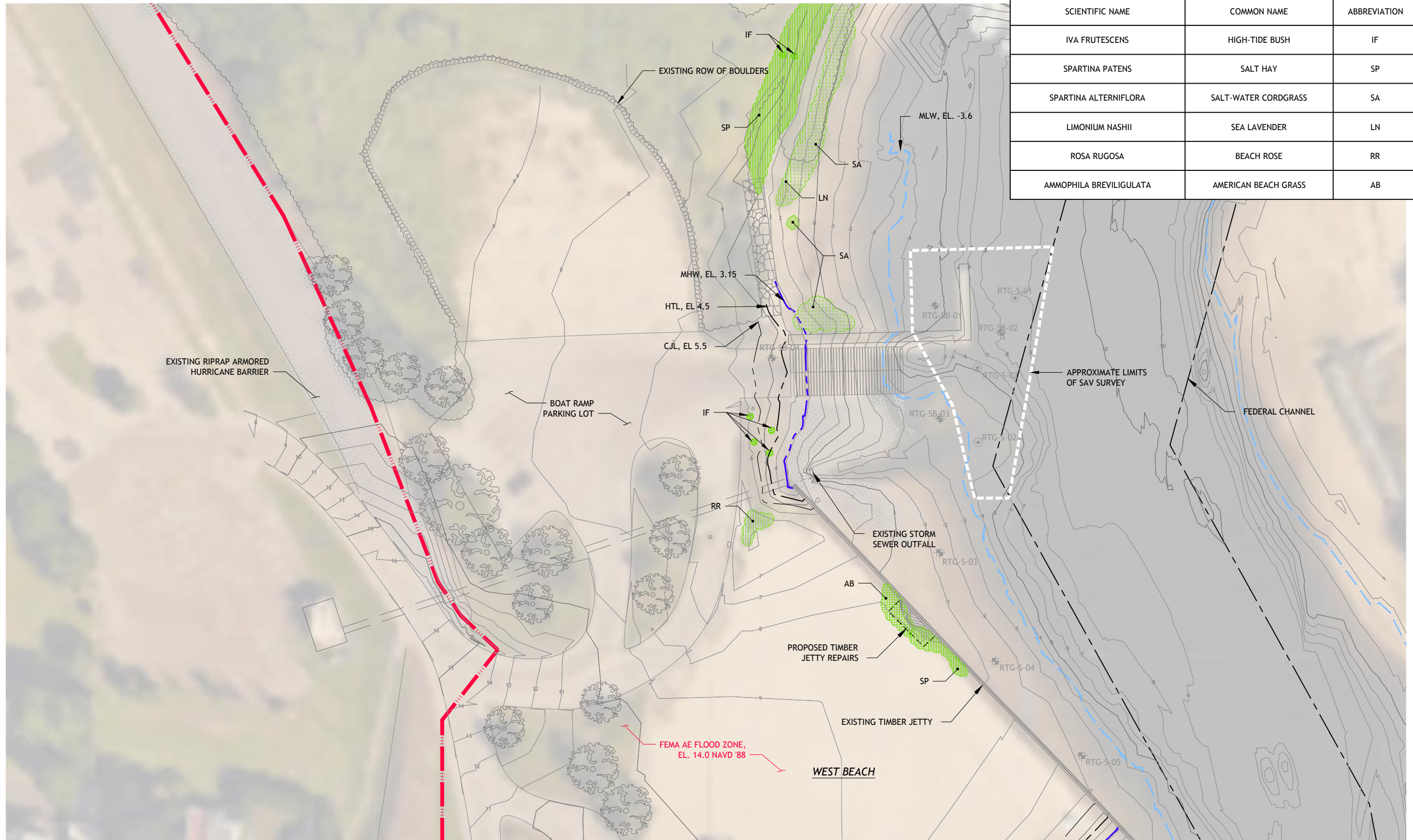


BOAT RAMP REPLACEMENT PROJECT
WEST BEACH
CITY OF STAMFORD
Stamford, Connecticut

EXISTING CONDITIONS PLAN

SHEET	4 OF 20
DWG No.	C-01
DATE	JAN 2019
PROJ No.	18103.00

TIDAL WETLANDS PLANT SPECIES LEGEND			
SCIENTIFIC NAME	COMMON NAME	ABBREVIATION	SYMBOL
IVA FRUTESCENS	HIGH-TIDE BUSH	IF	
SPARTINA PATENS	SALT HAY	SP	
SPARTINA ALTERNIFLORA	SALT-WATER CORDGRASS	SA	
LIMONIUM NASHII	SEA LAVENDER	LN	
ROSA RUGOSA	BEACH ROSE	RR	
AMMOPHILA BREVILIGULATA	AMERICAN BEACH GRASS	AB	



PLAN
SCALE: 1"=30'

**90% SUBMISSION
NOT FOR CONSTRUCTION** THIS DRAWING IS HALF SIZE

rtg RT Group, Inc.
Engineered from the Ground UpSM
458 Grand Avenue, Suite 213
New Haven, Connecticut 06513
T 203 823 9932 F 401 294 9806
DAM SAFETY - WATERFRONT - CONSTRUCTION ENGINEERING - GEOTECHNICAL
GEO-ENVIRONMENTAL - STRUCTURAL - CIVIL

DSGN	JBR						
DR	DBH						
CHK	GJC						
APVD	JBR	No.	DATE		BY	APVD	

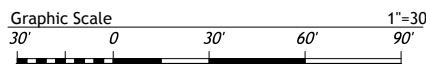
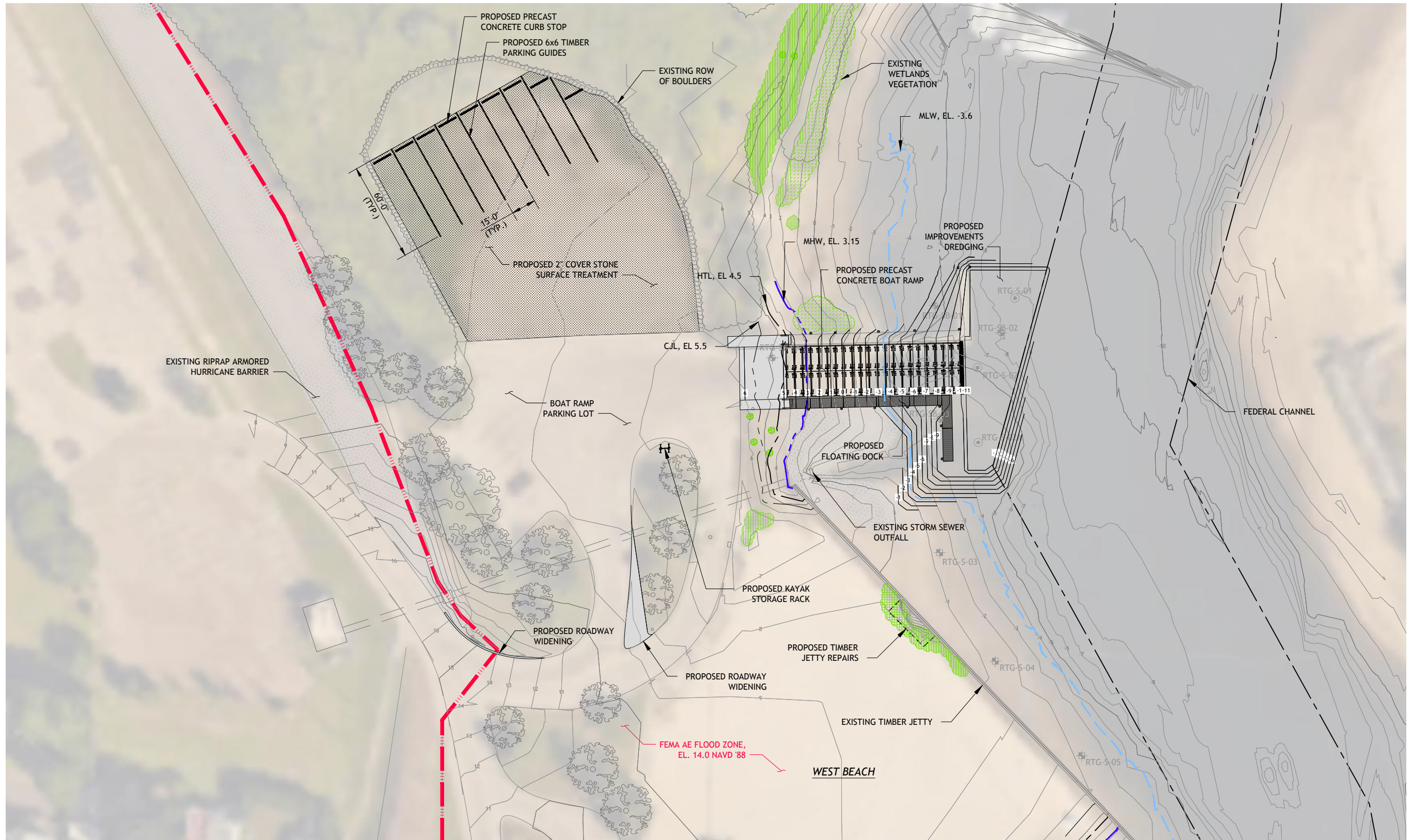
BAR IS ONE INCH ON ORIGINAL DRAWING.
0 1"
IF NOT ONE INCH ON THIS SHEET, ADJUST SCALES ACCORDINGLY



BOAT RAMP REPLACEMENT PROJECT
WEST BEACH
CITY OF STAMFORD
Stamford, Connecticut

EXISTING WETLANDS AND SAV SURVEY PLAN

SHEET	4A OF 20
DWG No.	C-01A
DATE	JAN 2019
PROJ No.	18103.00



PLAN
SCALE: 1"=30'

**90% SUBMISSION
NOT FOR CONSTRUCTION**

THIS DRAWING IS HALF SIZE

RT Group, Inc.
Engineered from the Ground UpSM
458 Grand Avenue, Suite 213
New Haven, Connecticut 06513
T 203 823 9932 F 401 294 9806
DAM SAFETY - WATERFRONT - CONSTRUCTION ENGINEERING - GEOTECHNICAL
GEO-ENVIRONMENTAL - STRUCTURAL - CIVIL

DSGN	JBR						
DR	DBH						
CHK	GJC						
APVD	JBR	No.	DATE		BY	APVD	

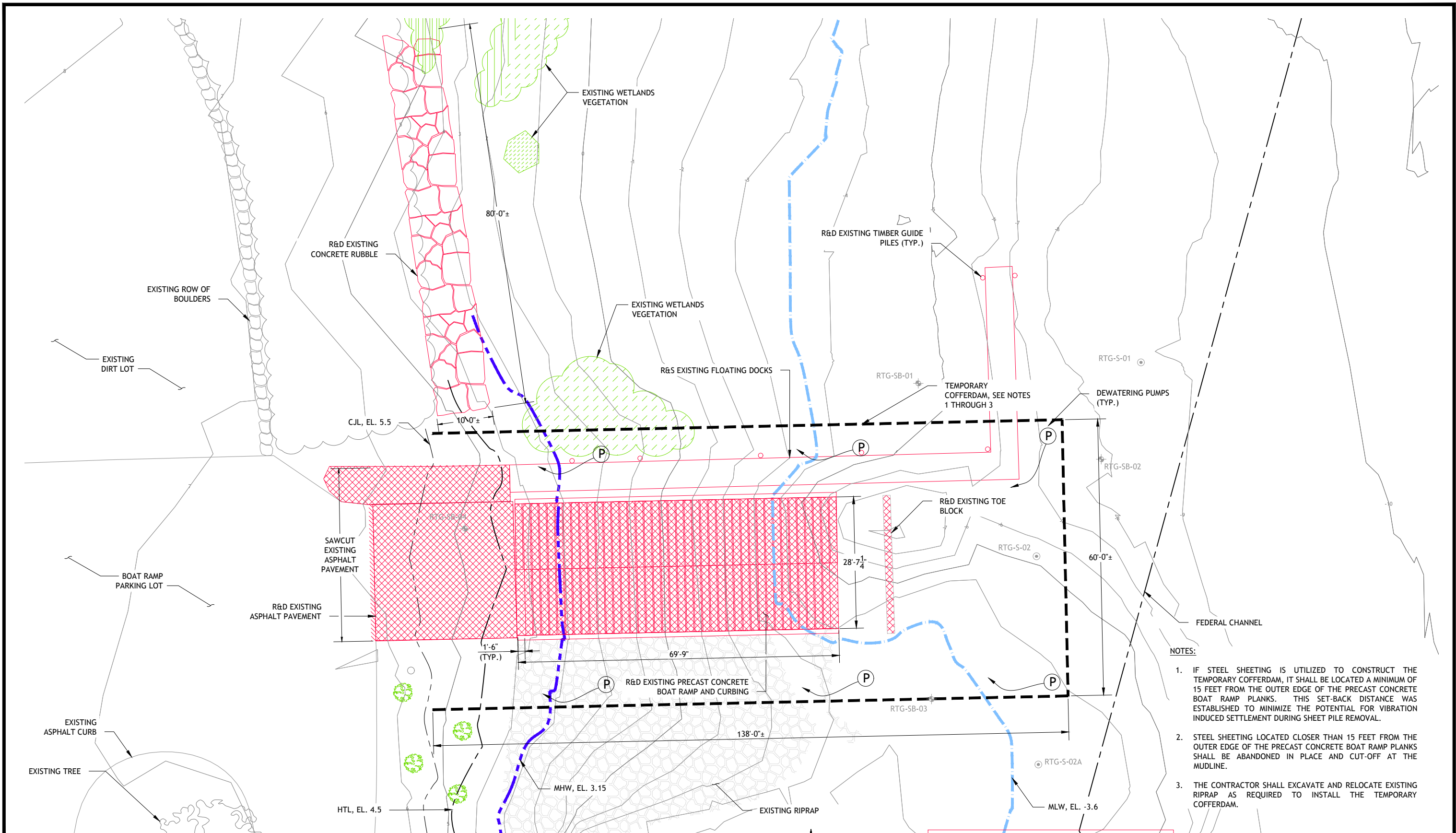
BAR IS ONE INCH ON ORIGINAL DRAWING.
0 1"
IF NOT ONE INCH ON THIS SHEET, ADJUST SCALES ACCORDINGLY



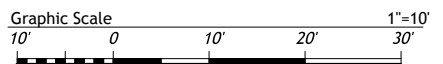
**BOAT RAMP REPLACEMENT
PROJECT
WEST BEACH
CITY OF STAMFORD
Stamford, Connecticut**

IMPROVEMENTS PLAN

SHEET	5 OF 20
DWG No.	C-02
DATE	JAN 2019
PROJ No.	18103.00



- NOTES:
1. IF STEEL SHEETING IS UTILIZED TO CONSTRUCT THE TEMPORARY COFFERDAM, IT SHALL BE LOCATED A MINIMUM OF 15 FEET FROM THE OUTER EDGE OF THE PRECAST CONCRETE BOAT RAMP PLANKS. THIS SET-BACK DISTANCE WAS ESTABLISHED TO MINIMIZE THE POTENTIAL FOR VIBRATION INDUCED SETTLEMENT DURING SHEET PILE REMOVAL.
 2. STEEL SHEETING LOCATED CLOSER THAN 15 FEET FROM THE OUTER EDGE OF THE PRECAST CONCRETE BOAT RAMP PLANKS SHALL BE ABANDONED IN PLACE AND CUT-OFF AT THE MUDLINE.
 3. THE CONTRACTOR SHALL EXCAVATE AND RELOCATE EXISTING RIPRAP AS REQUIRED TO INSTALL THE TEMPORARY COFFERDAM.



PLAN
SCALE: 1"=10'-0"

**90% SUBMISSION
NOT FOR CONSTRUCTION**

THIS DRAWING IS HALF SIZE

rtg RT Group, Inc.
Engineered from the Ground UpSM
458 Grand Avenue, Suite 213
New Haven, Connecticut 06513
T 203 823 9932 F 401 294 9806
DAM SAFETY - WATERFRONT - CONSTRUCTION ENGINEERING - GEOTECHNICAL
GEO-ENVIRONMENTAL - STRUCTURAL - CIVIL

DSGN	JBR								
DR	DBH								
CHK	GJC								
APVD	JBR	No.	DATE					BY	APVD

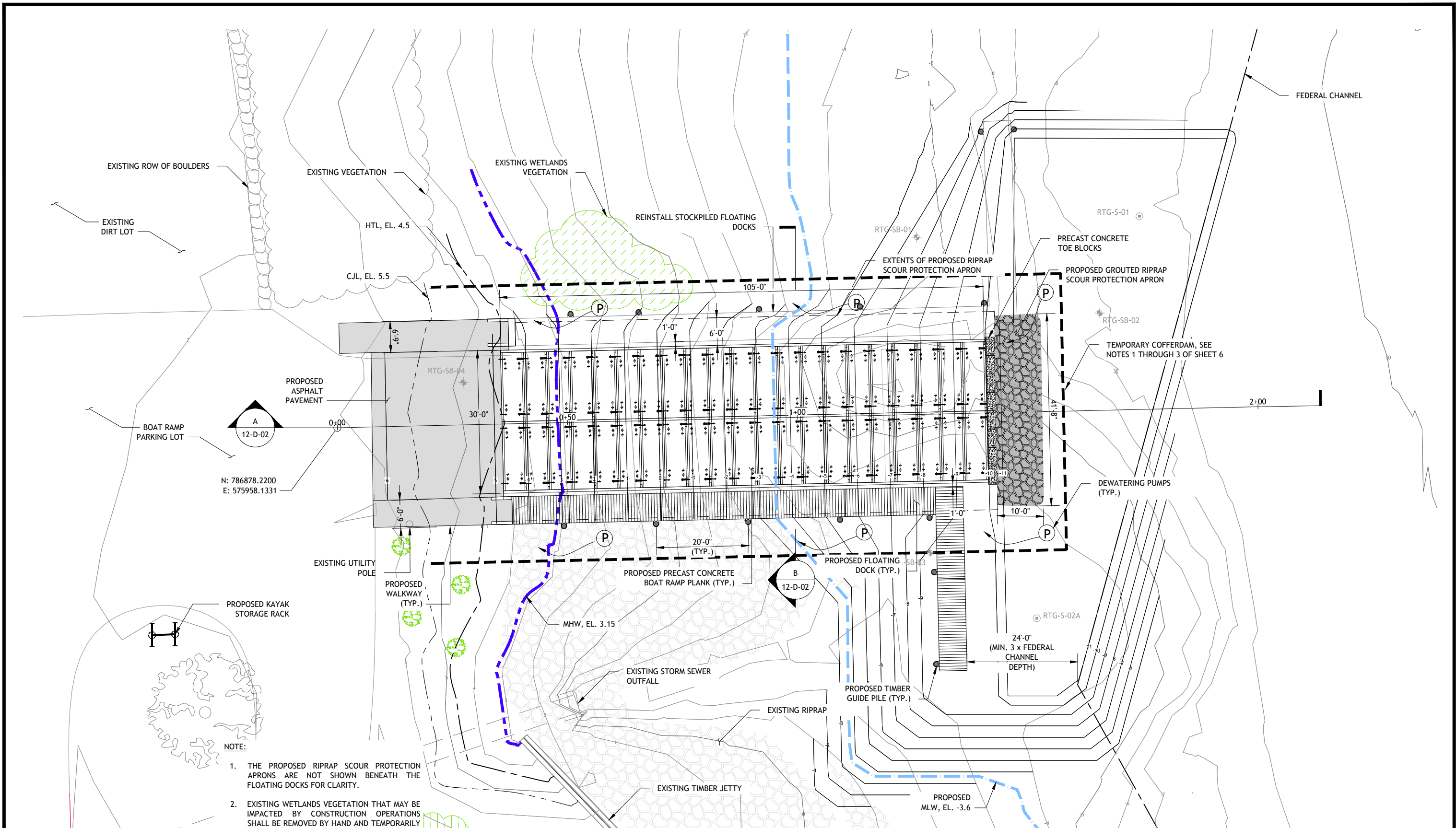
BAR IS ONE INCH ON ORIGINAL DRAWING.
0 1"
IF NOT ONE INCH ON THIS SHEET, ADJUST SCALES ACCORDINGLY



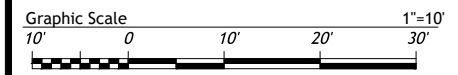
**BOAT RAMP REPLACEMENT
PROJECT
WEST BEACH
CITY OF STAMFORD
Stamford, Connecticut**

DEMOLITION AND REMOVAL PLAN

SHEET	6 OF 20
DWG No.	C-03
DATE	JAN 2019
PROJ No.	18103.00



- NOTE:
1. THE PROPOSED RIPRAP SCOUR PROTECTION APRONS ARE NOT SHOWN BENEATH THE FLOATING DOCKS FOR CLARITY.
 2. EXISTING WETLANDS VEGETATION THAT MAY BE IMPACTED BY CONSTRUCTION OPERATIONS SHALL BE REMOVED BY HAND AND TEMPORARILY REPLANTED AT THE SAME ELEVATION DURING THE WORK. UPON COMPLETION OF THE WORK, THE VEGETATION SHALL BE RETURNED TO ITS ORIGINAL LOCATION AND REPLANTED BY HAND.



PLAN
SCALE: 1"=10'-0"

**90% SUBMISSION
NOT FOR CONSTRUCTION** THIS DRAWING IS HALF SIZE

rtg RT Group, Inc.
Engineered from the Ground UpSM
458 Grand Avenue, Suite 213
New Haven, Connecticut 06513
T 203 823 9932 F 401 294 9806
DAM SAFETY - WATERFRONT - CONSTRUCTION ENGINEERING - GEOTECHNICAL
GEO-ENVIRONMENTAL - STRUCTURAL - CIVIL

DSGN	JBR						
DR	DBH						
CHK	GJC						
APVD	JBR	No.	DATE	BY	APVD		

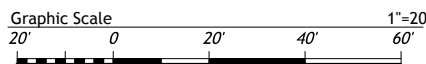
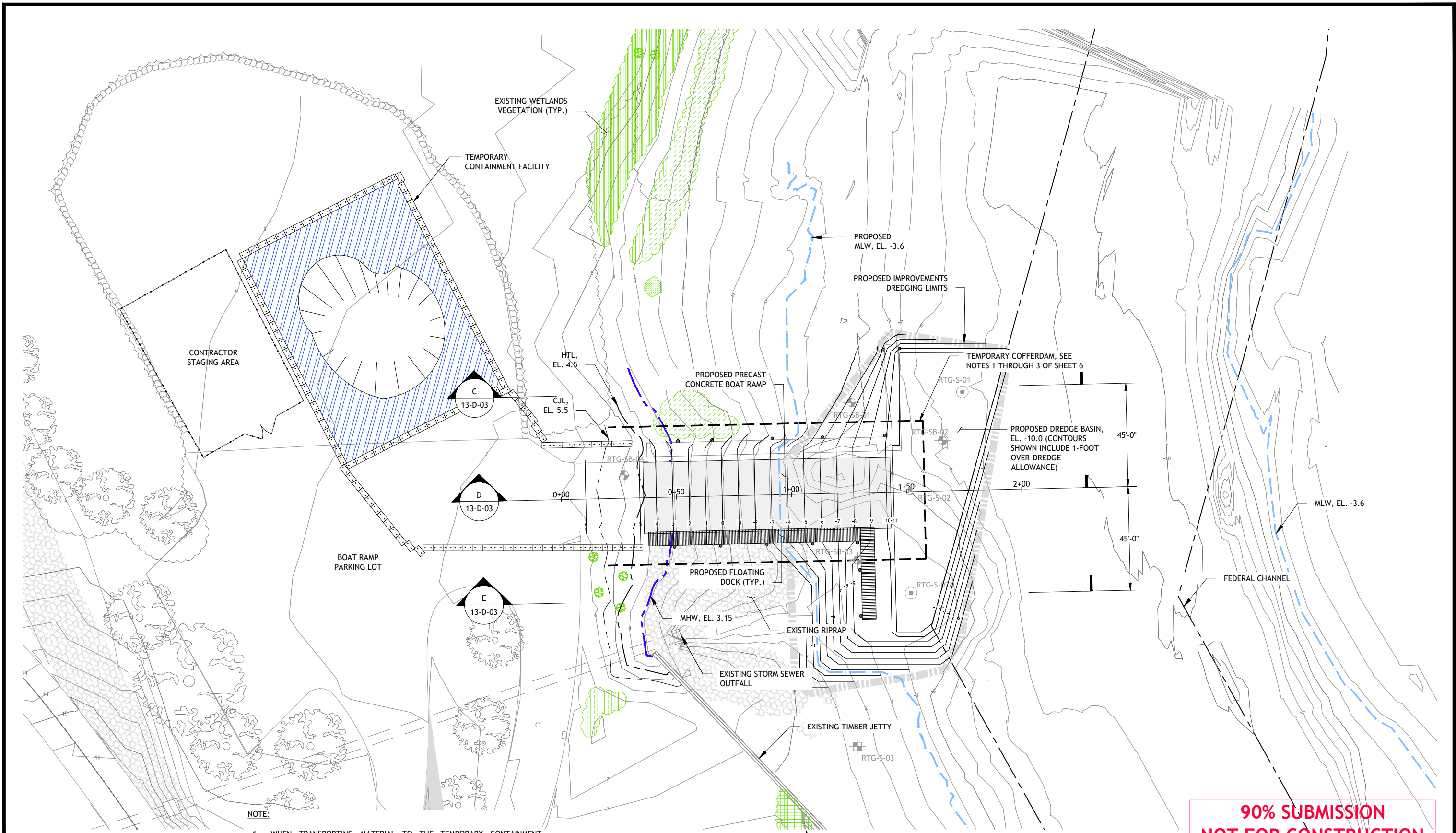
BAR IS ONE INCH ON ORIGINAL DRAWING.
0 1"
IF NOT ONE INCH ON THIS SHEET, ADJUST SCALES ACCORDINGLY



BOAT RAMP REPLACEMENT PROJECT
WEST BEACH
CITY OF STAMFORD
Stamford, Connecticut

BOAT RAMP PLAN

SHEET	7 OF 20
DWG No.	C-04
DATE	JAN 2019
PROJ No.	18103.00



NOTE:
 1. WHEN TRANSPORTING MATERIAL TO THE TEMPORARY CONTAINMENT FACILITY, THE CONTRACTOR SHALL DEPLOY STRAWBAILS/SILT SOCKS BETWEEN THE FACILITY AND THE BOAT RAMP TO MINIMIZE SEDIMENTATION INTO AREAS UPLAND OF THE WORK AREA AND OUTSIDE OF THE TEMPORARY CONTAINMENT FACILITY.

OVERALL SITE PLAN
 SCALE: 1"=20'-0"

**90% SUBMISSION
 NOT FOR CONSTRUCTION**
 THIS DRAWING IS HALF SIZE

rtg RT Group, Inc.
 Engineered from the Ground UpSM
 458 Grand Avenue, Suite 213
 New Haven, Connecticut 06513
 T 203 823 9932 F 401 294 9806
DAM SAFETY · WATERFRONT · CONSTRUCTION ENGINEERING · GEOTECHNICAL
 GEO-ENVIRONMENTAL · STRUCTURAL · CIVIL

DSGN	JBR						
DR	DBH						
CHK	GJC						
APVD	JBR	No.	DATE		BY	APVD	

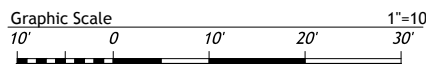
BAR IS ONE INCH ON ORIGINAL DRAWING.
 0 1"
 IF NOT ONE INCH ON THIS SHEET, ADJUST SCALES ACCORDINGLY



BOAT RAMP REPLACEMENT PROJECT
WEST BEACH
 CITY OF STAMFORD
 Stamford, Connecticut

IMPROVEMENTS DREDGING PLAN

SHEET	8 OF 20
DWG No.	C-05
DATE	JAN 2019
PROJ No.	18103.00



PLAN
SCALE: 1"=10'

**90% SUBMISSION
NOT FOR CONSTRUCTION**

THIS DRAWING IS HALF SIZE

rtg RT Group, Inc.
Engineered from the Ground UpSM
458 Grand Avenue, Suite 213
New Haven, Connecticut 06513
T 203 823 9932 F 401 294 9806
DAM SAFETY - WATERFRONT - CONSTRUCTION ENGINEERING - GEOTECHNICAL
GEO-ENVIRONMENTAL - STRUCTURAL - CIVIL

DSGN	JBR						
DR	DBH						
CHK	GJC						
APVD	JBR	No.	DATE			BY	APVD

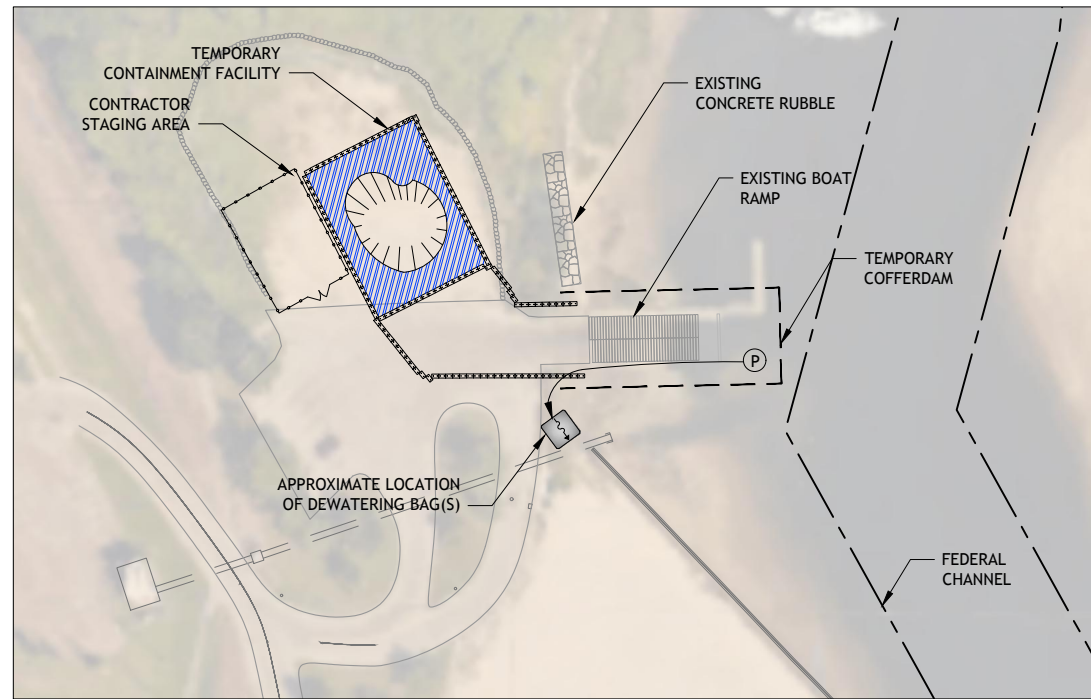
BAR IS ONE INCH ON ORIGINAL DRAWING.
0 1"
IF NOT ONE INCH ON THIS SHEET, ADJUST SCALES ACCORDINGLY



**BOAT RAMP REPLACEMENT
PROJECT
WEST BEACH
CITY OF STAMFORD
Stamford, Connecticut**

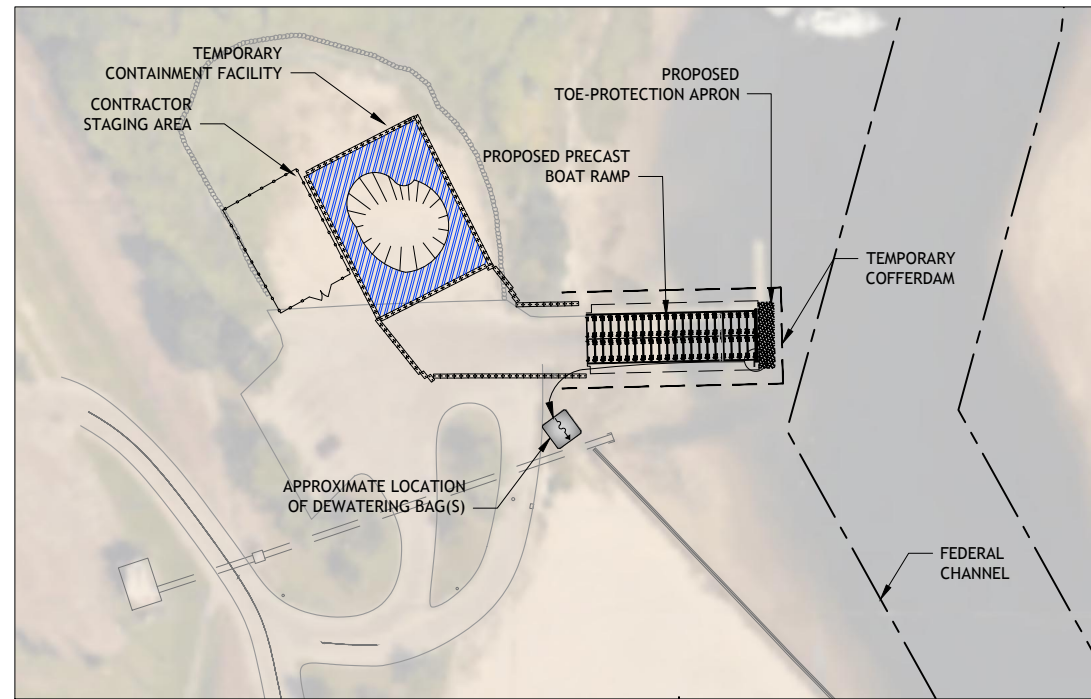
**PARKING LOT
IMPROVEMENTS PLAN**

SHEET	9 OF 20
DWG No.	C-06
DATE	JAN 2019
PROJ No.	18103.00



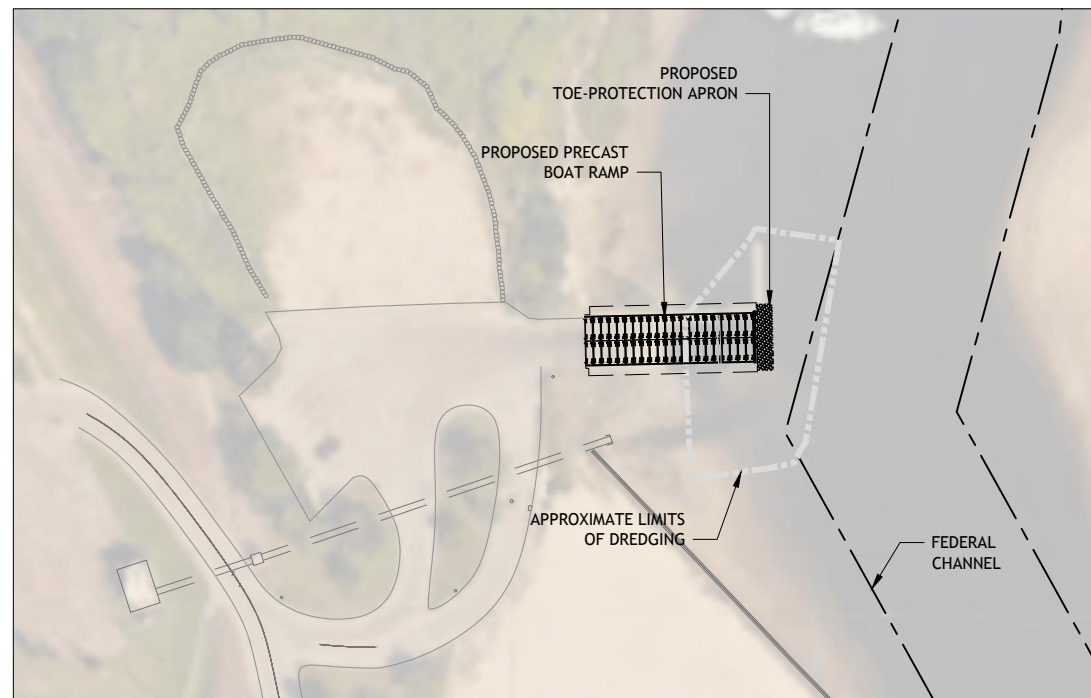
PHASE 1
SCALE: 1"=60'-0"

1. SETUP CONTRACTOR'S STAGING AREA AND TEMPORARY CONTAINMENT FACILITY.
2. R&D CONCRETE RUBBLE UPLAND OF WETLANDS.
3. R&S EXISTING FLOATING DOCKS AND R&D TIMBER GUIDE PILES.
4. F&I TEMPORARY COFFERDAM.
5. DEWATER TEMPORARY COFFERDAM.



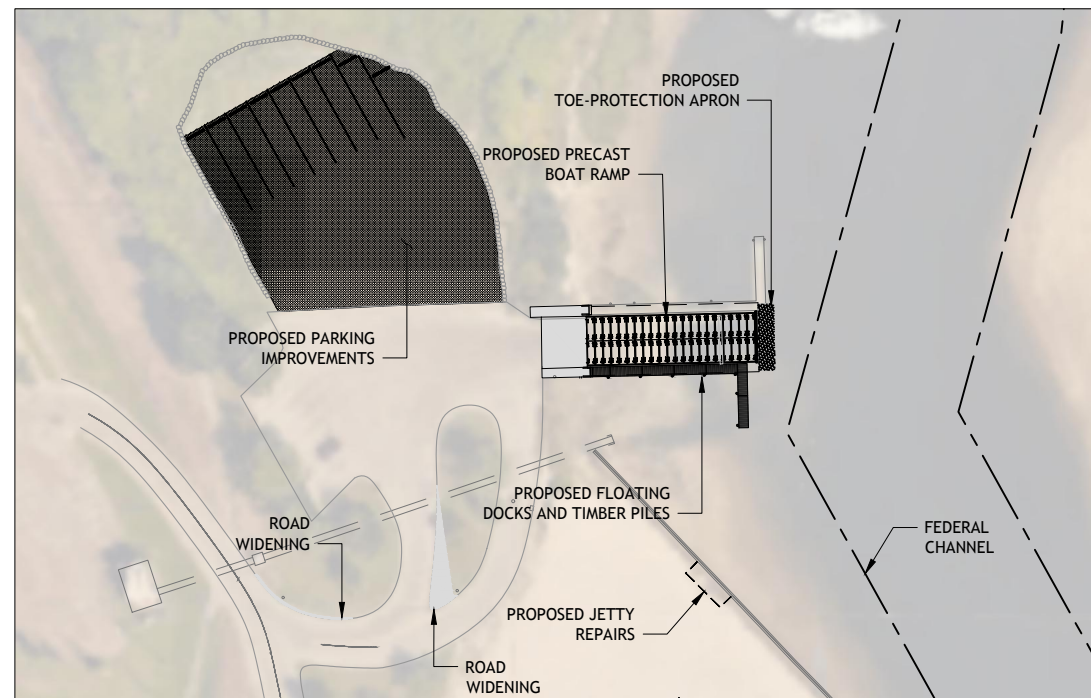
PHASE 2
SCALE: 1"=60'-0"

1. R&D EXISTING BOAT RAMP.
2. EXCAVATE AND PREPARE SUBGRADE.
3. INSTALL GEOTEXTILE FABRIC, CRUSHED STONE, GEOGRID, AND TOE BLOCKS.
4. F&I RIPRAP SCOUR PROTECTION APRON AT THE TOE OF RAMP.
5. F&I PRECAST BOAT RAMP PLANKS.
6. F&I RIPRAP SCOUR PROTECTION APRONS ALONG THE SIDES OF RAMP.



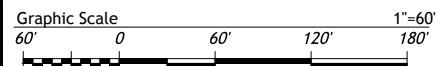
PHASE 3
SCALE: 1"=60'-0"

1. COMPLETE REMAINDER OF IMPROVEMENTS DREDGING.
2. REMOVE TEMPORARY COFFERDAM.
3. TRANSPORT STOCKPILED MATERIAL TO CUMMINGS PARK FOR CONSTRUCTION OF LANDSCAPE FEATURES.
4. REMOVE THE TEMPORARY CONTAINMENT FACILITY.



PHASE 4
SCALE: 1"=60'-0"

1. REINSTALL STOCKPILED FLOATING DOCKS AND INSTALL NEW TIMBER GUIDE PILES.
2. F&I NEW TIMBER GUIDE PILES AND FLOATING DOCKS.
3. F&I APPROACH PAVEMENT.
4. COMPLETE REMAINING IMPROVEMENTS AND DEMOBILIZE.

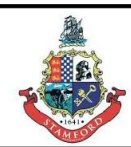


rtg RT Group, Inc.
Engineered from the Ground UpSM
458 Grand Avenue, Suite 213
New Haven, Connecticut 06513
T 203 823 9932 F 401 294 9806
DAM SAFETY - WATERFRONT - CONSTRUCTION ENGINEERING - GEOTECHNICAL
GEO-ENVIRONMENTAL - STRUCTURAL - CIVIL

DSGN	JBR
DR	DBH
CHK	GJC
APVD	JBR

No.	DATE	BY
		APVD

BAR IS ONE INCH ON ORIGINAL DRAWING.
IF NOT ONE INCH ON THIS SHEET, ADJUST SCALES ACCORDINGLY



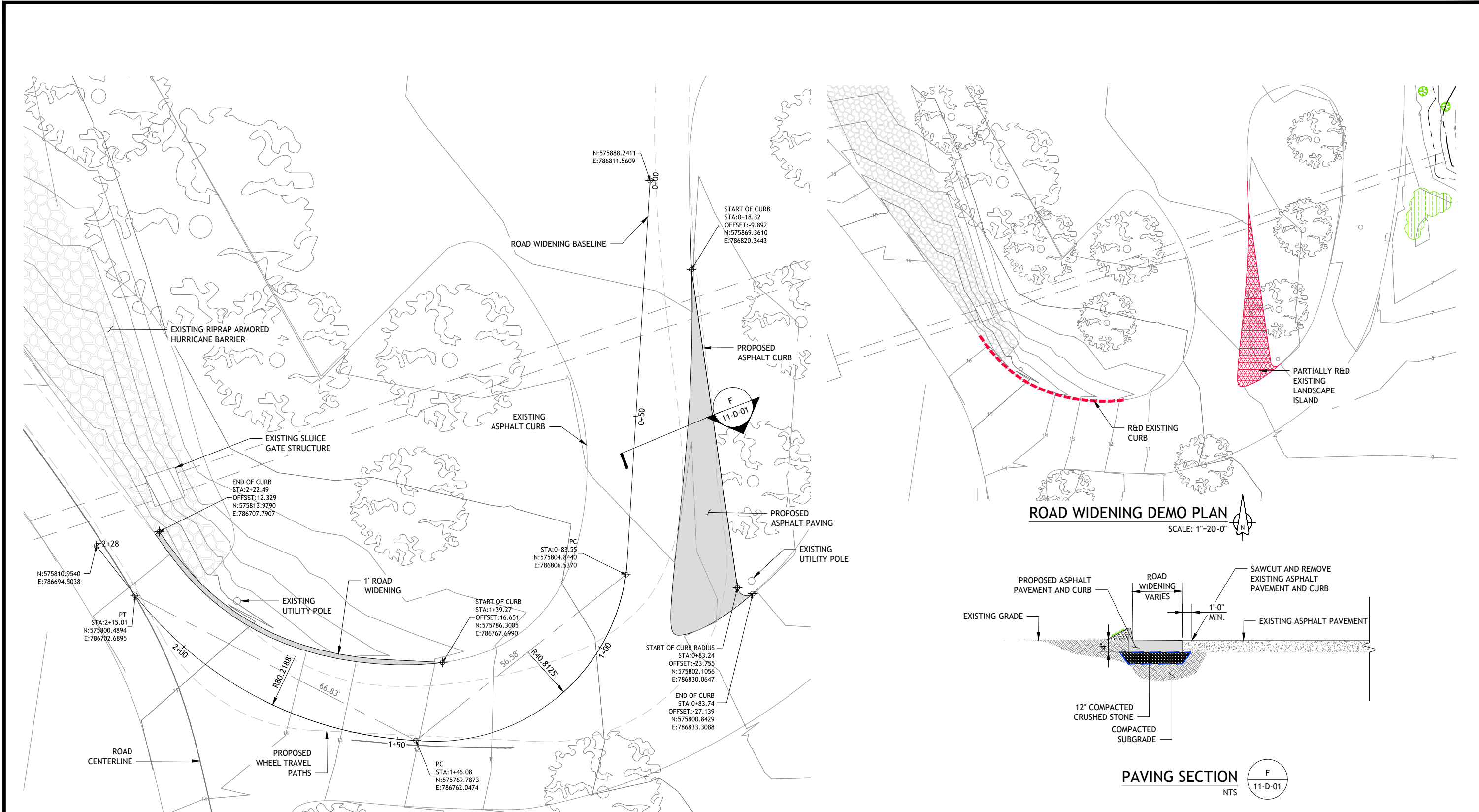
BOAT RAMP REPLACEMENT PROJECT
WEST BEACH
CITY OF STAMFORD
Stamford, Connecticut

SUGGESTED PHASING PLAN

**90% SUBMISSION
NOT FOR CONSTRUCTION**

THIS DRAWING IS HALF SIZE

SHEET	10 OF 20
DWG No.	C-07
DATE	JAN 2019
PROJ No.	18103.00



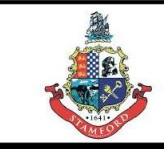
**90% SUBMISSION
NOT FOR CONSTRUCTION**

THIS DRAWING IS HALF SIZE

rtg **RT Group, Inc.**
 Engineered from the Ground UpSM
 458 Grand Avenue, Suite 213
 New Haven, Connecticut 06513
 T 203 823 9932 F 401 294 9806
DAM SAFETY · WATERFRONT · CONSTRUCTION ENGINEERING · GEOTECHNICAL
 GEO-ENVIRONMENTAL · STRUCTURAL · CIVIL

DSGN	JBR								
DR	DBH								
CHK	GJC								
APVD	JBR	No.	DATE					BY	APVD

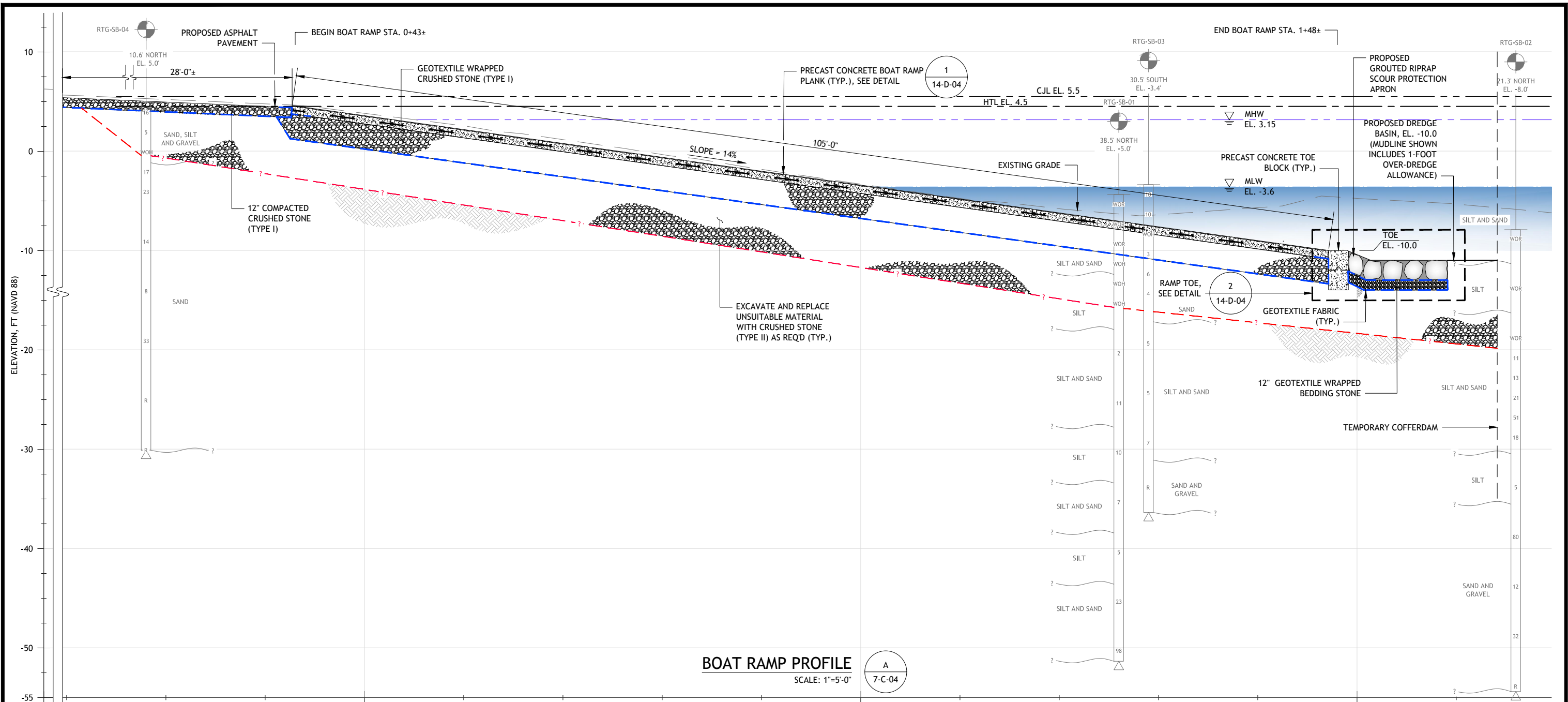
BAR IS ONE INCH ON ORIGINAL DRAWING.
 0 1"
 IF NOT ONE INCH ON THIS SHEET, ADJUST SCALES ACCORDINGLY



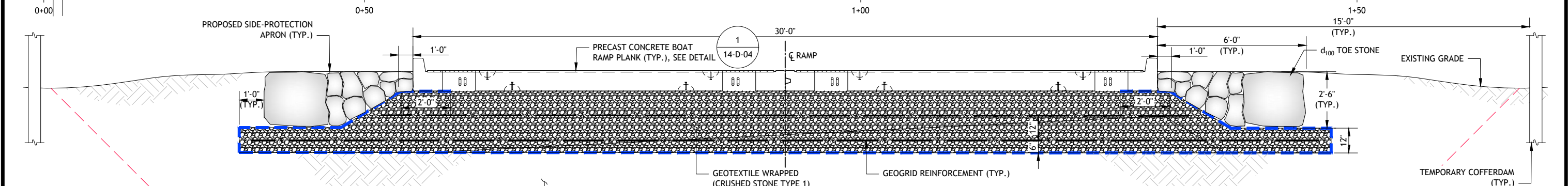
**BOAT RAMP REPLACEMENT
PROJECT
WEST BEACH
CITY OF STAMFORD
Stamford, Connecticut**

ROAD WIDENING PLAN AND SECTION

SHEET	11 OF 20
DWG No.	D-01
DATE	JAN 2019
PROJ No.	18103.00



BOAT RAMP PROFILE
SCALE: 1"=5'-0"



BOAT RAMP SECTION
SCALE: 1/2"=1'-0"

NOTE:
1. FLOATING DOCKS AND GUIDE PILES NOT SHOWN FOR CLARITY.

EXCAVATE AND REPLACE UNSUITABLE MATERIAL WITH CRUSHED STONE (TYPE II) AS REQD (TYP.)

**90% SUBMISSION
NOT FOR CONSTRUCTION**

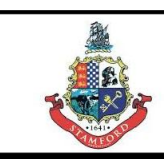
THIS DRAWING IS HALF SIZE

rtg RT Group, Inc.
Engineered from the Ground UpSM
458 Grand Avenue, Suite 213
New Haven, Connecticut 06513
T 203 823 9932 F 401 294 9806
DAM SAFETY - WATERFRONT - CONSTRUCTION ENGINEERING - GEOTECHNICAL
GEO-ENVIRONMENTAL - STRUCTURAL - CIVIL

DSGN	JBR		
DR	DBH		
CHK	GJC		
APVD	JBR	No.	DATE

BY	APVD
----	------

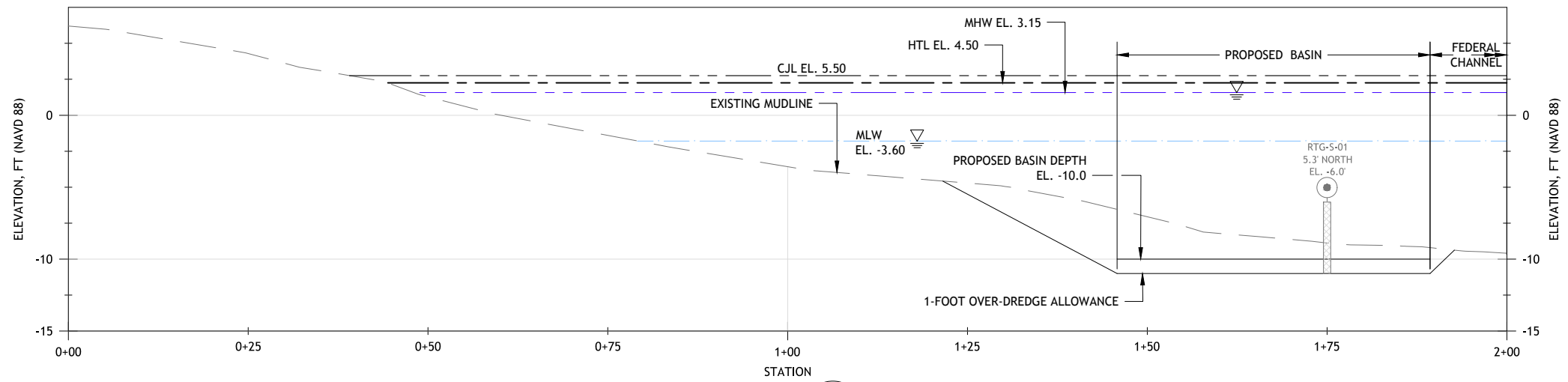
BAR IS ONE INCH ON ORIGINAL DRAWING.
0 1"
IF NOT ONE INCH ON THIS SHEET, ADJUST SCALES ACCORDINGLY



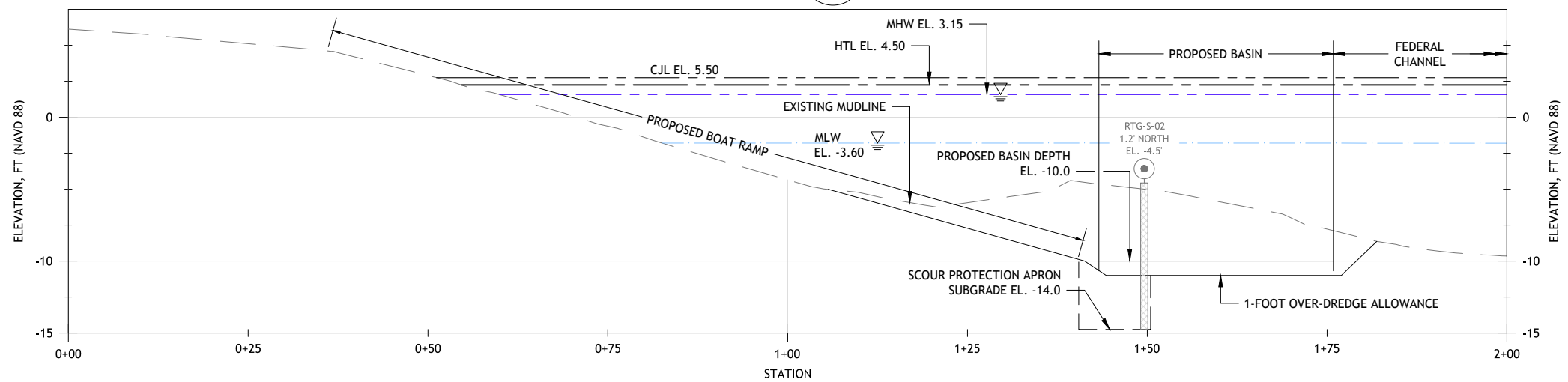
BOAT RAMP REPLACEMENT PROJECT
WEST BEACH
CITY OF STAMFORD
Stamford, Connecticut

BOAT RAMP SECTION AND PROFILE

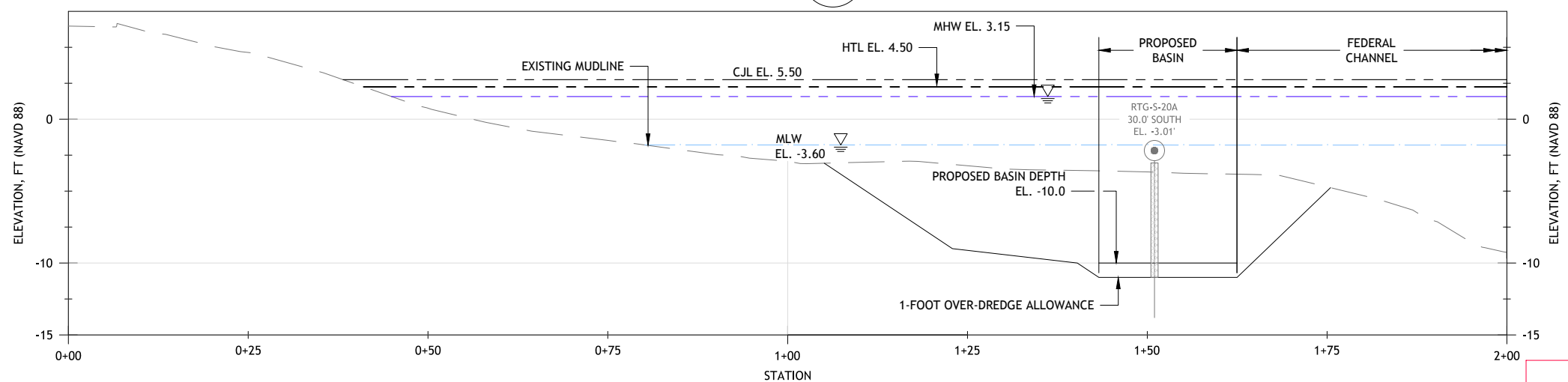
SHEET	12 OF 20
DWG No.	D-02
DATE	JAN 2019
PROJ No.	18103.00



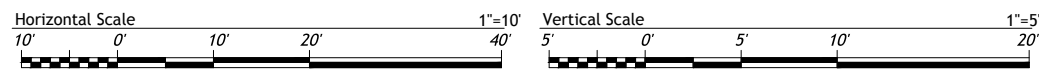
SECTION C
8-C-05



SECTION D
8-C-05



SECTION E
8-C-05



90% SUBMISSION
NOT FOR CONSTRUCTION
THIS DRAWING IS HALF SIZE



DSGN	JBR
DR	DBH
CHK	GJC
APVD	JBR

No.	DATE

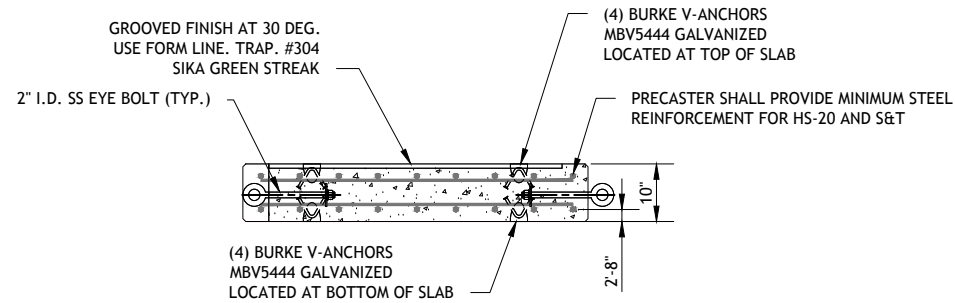
BY: APVD



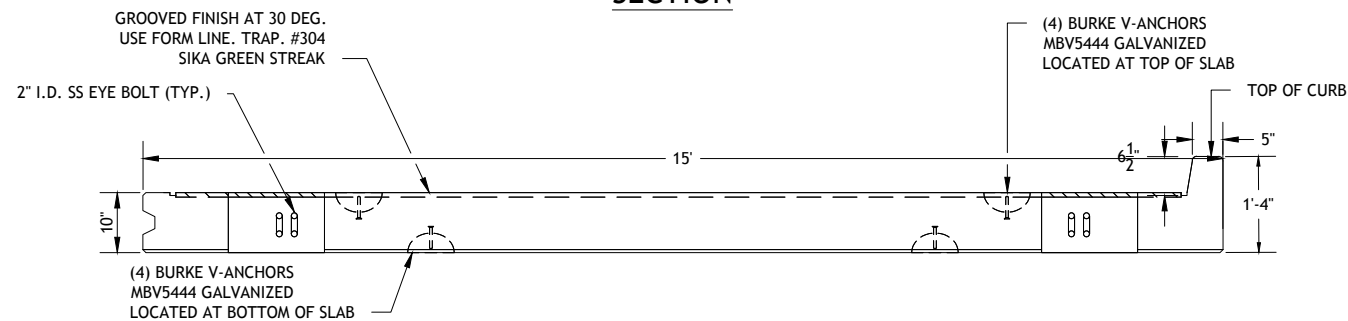
BOAT RAMP REPLACEMENT PROJECT
WEST BEACH
CITY OF STAMFORD
Stamford, Connecticut

PROPOSED MUDLINE SECTIONS

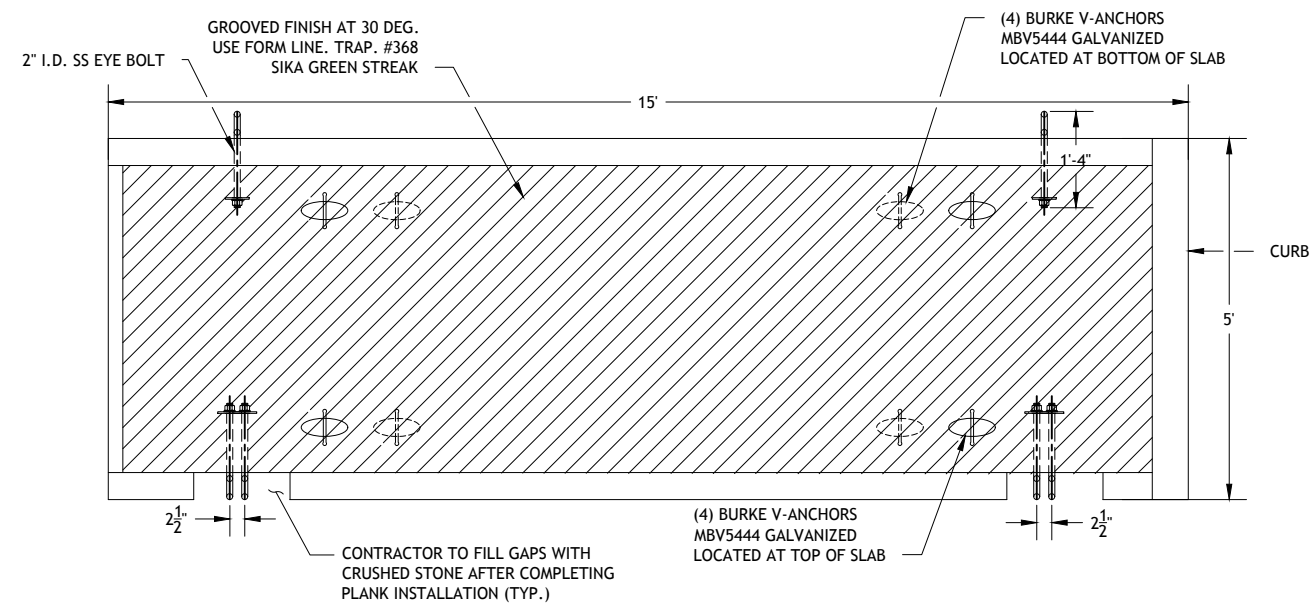
SHEET	13 OF 20
DWG No.	D-03
DATE	JAN 2019
PROJ No.	18103.00



SECTION



ELEVATION



PLAN

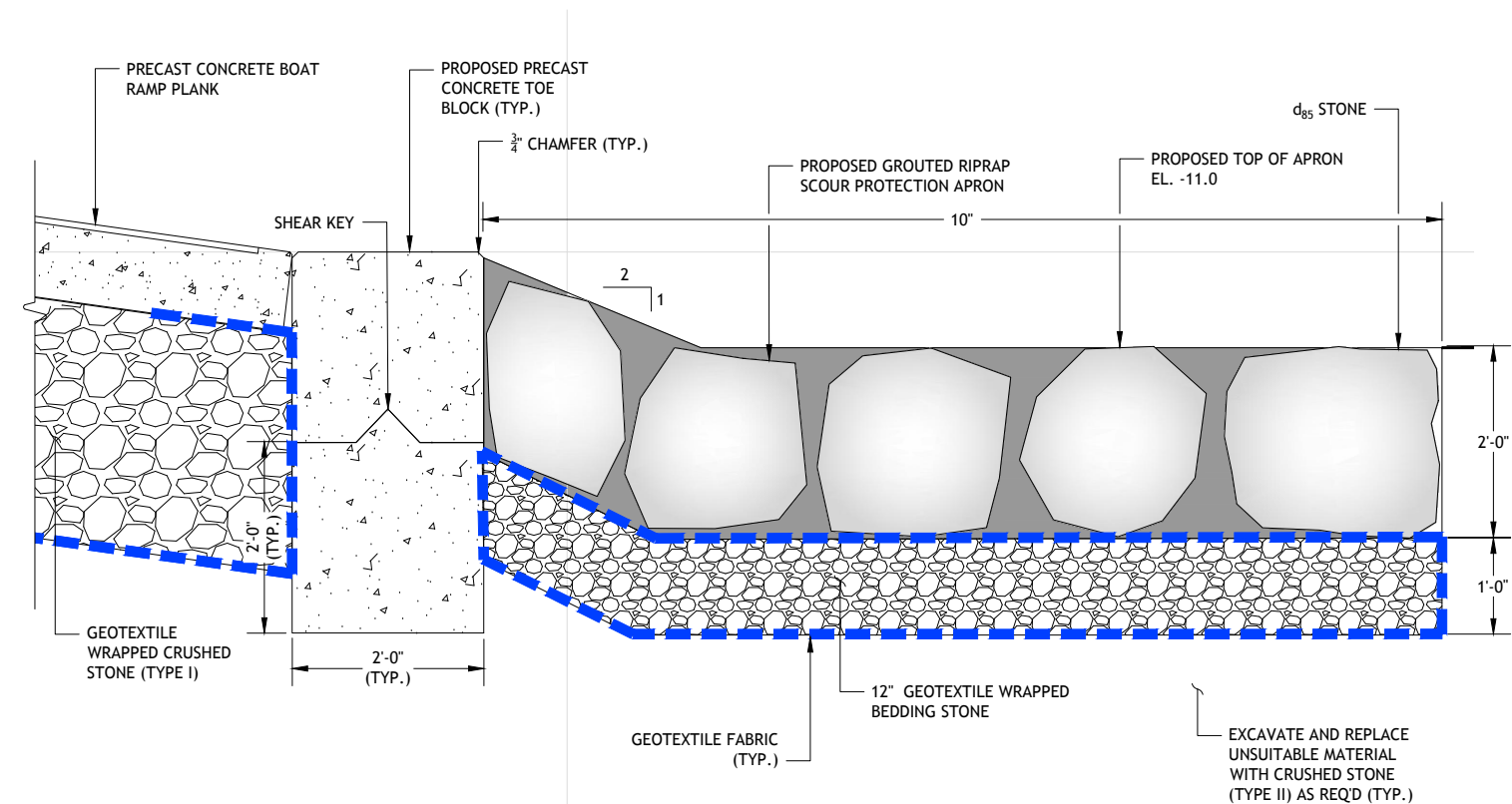
NOTE:

- 2" MINIMUM COVER ON ALL SIDES OF REBAR.

PRECAST BOAT RAMP PLANK DETAIL

SCALE: 3/4"=1'-0"

1
12-D-02



NOTE:

- RIPRAP FOR GROUDED SCOUR PROTECTION APRON SHALL BE 24" FLAT LAID STONES.

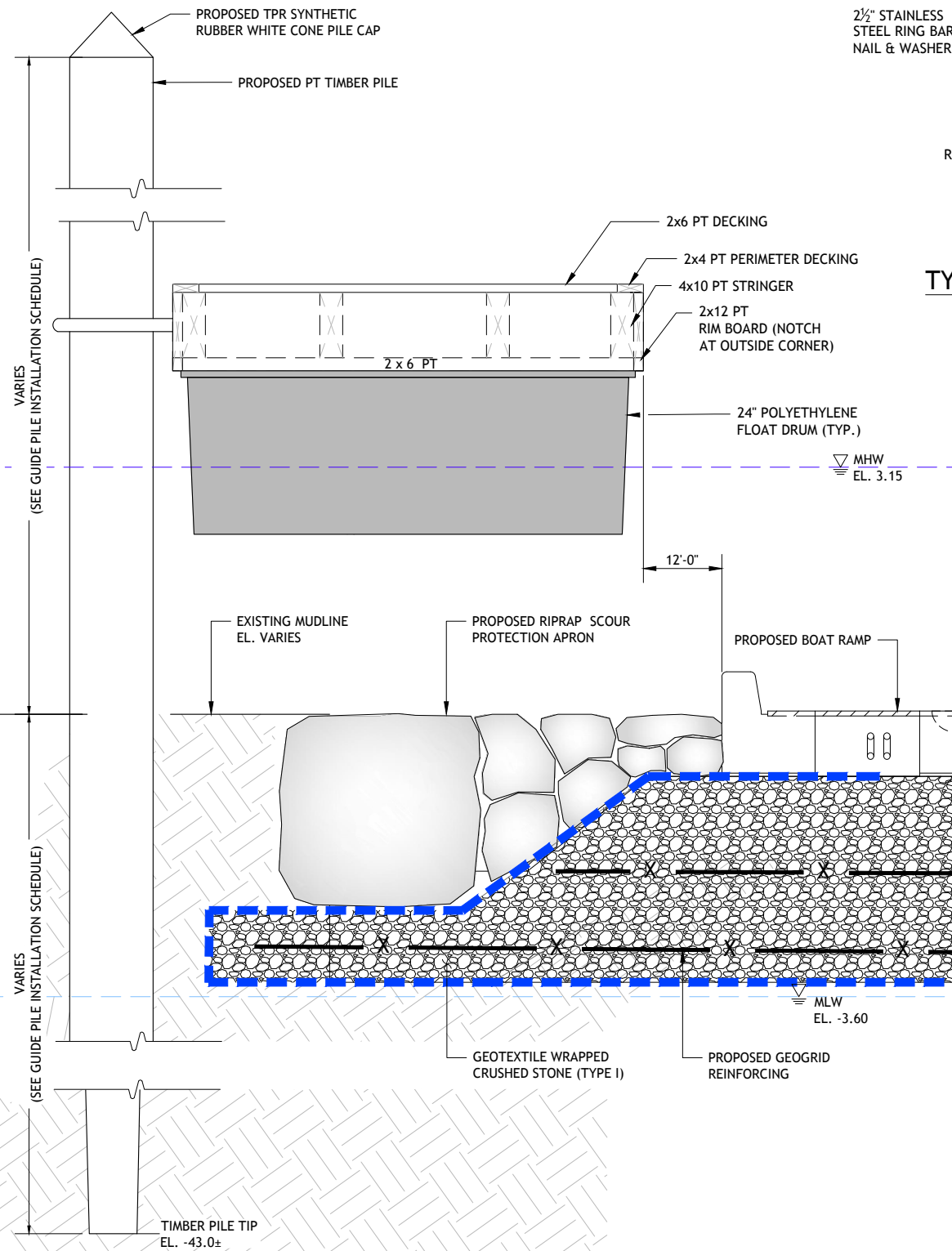
RAMP TOE DETAIL

SCALE: 1"=1'-0"

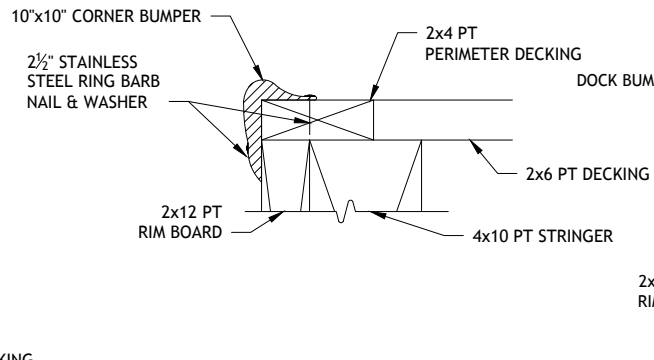
2
12-D-02

**90% SUBMISSION
NOT FOR CONSTRUCTION**

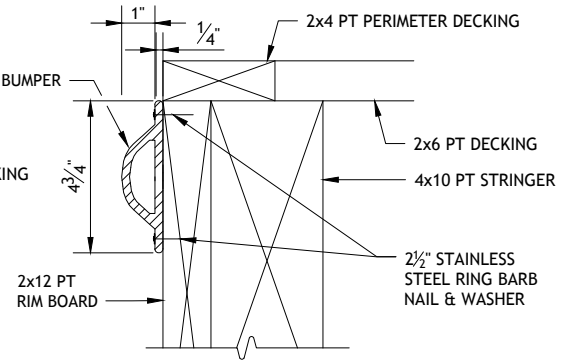
THIS DRAWING IS HALF SIZE



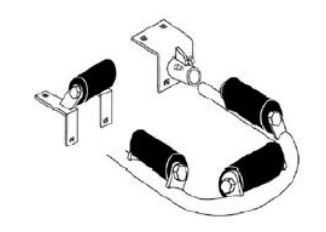
TYPICAL FLOATING DOCK SECTION
SCALE: 1" = 1'-0"



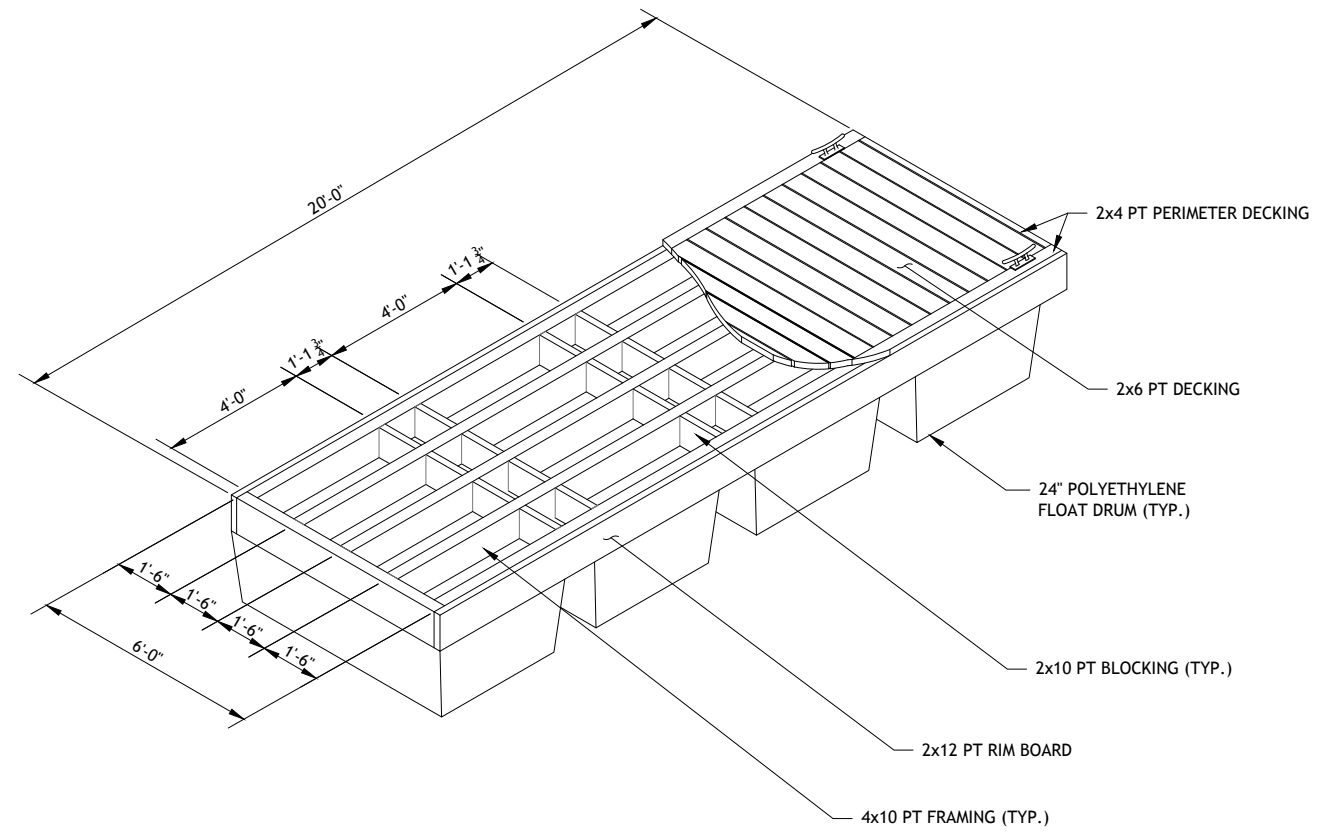
TYPICAL CORNER BUMPER DETAIL
SCALE: 4" = 1'-0"



TYPICAL BUMPER DETAIL
SCALE: 4" = 1'-0"



16" MERCOMARINE PILE HOOP
SCALE: NTS



FLOATING DOCK ISOMETRIC VIEW
SCALE: 3/8" = 1'-0"

**90% SUBMISSION
NOT FOR CONSTRUCTION**

THIS DRAWING IS HALF SIZE



DSGN	JBR			
DR	DBH			
CHK	GJC			
APVD	JBR	No.	DATE	

BY	APVD			
----	------	--	--	--

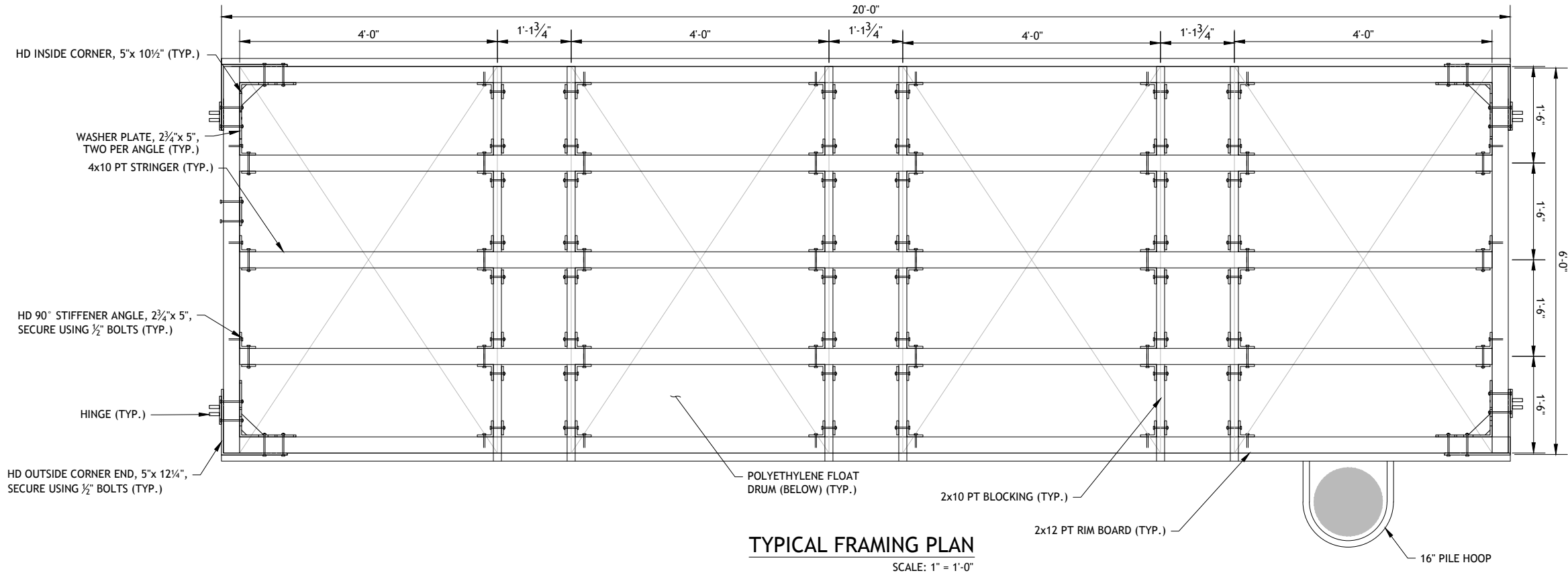
BAR IS ONE INCH ON ORIGINAL DRAWING.
0 1"
IF NOT ONE INCH ON THIS SHEET, ADJUST SCALES ACCORDINGLY



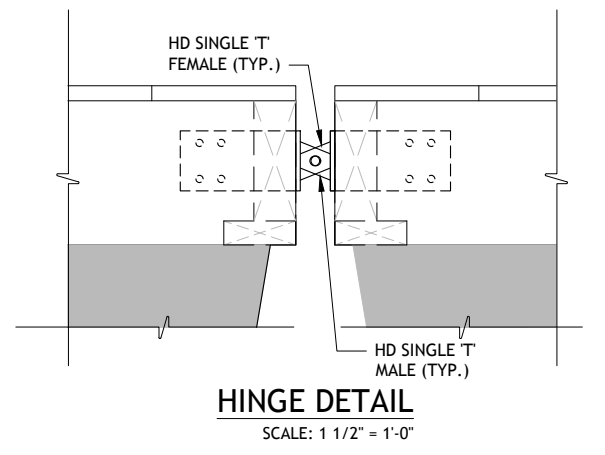
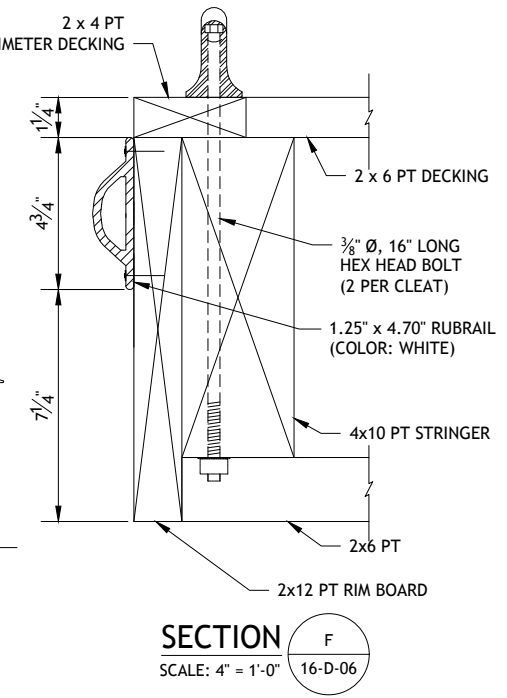
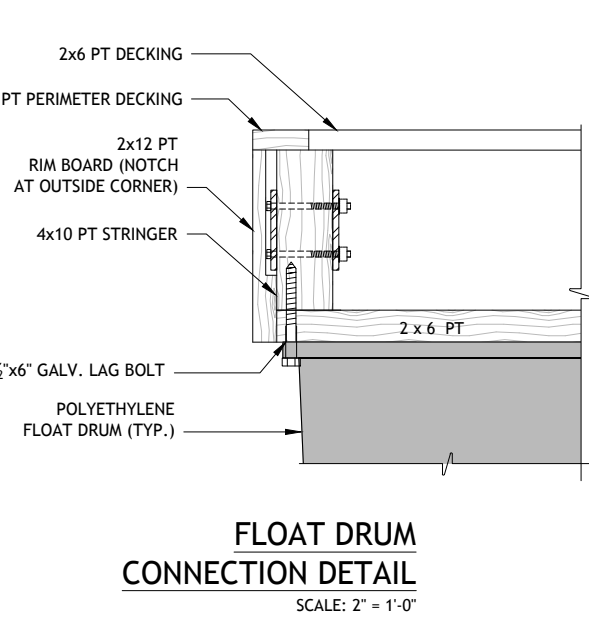
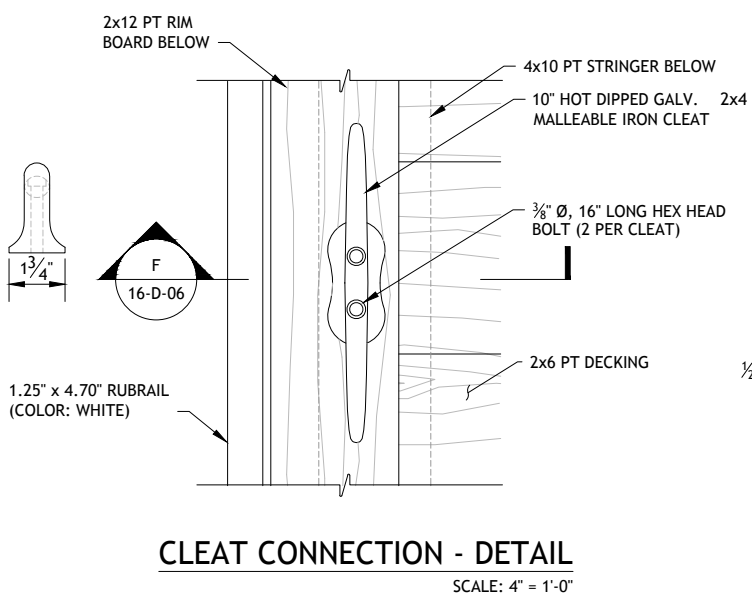
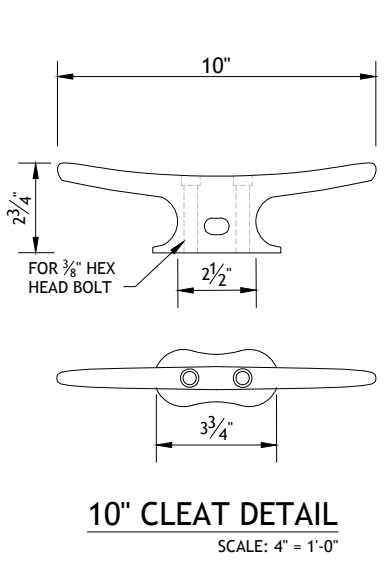
BOAT RAMP REPLACEMENT PROJECT
WEST BEACH
CITY OF STAMFORD
Stamford, Connecticut

FLOATING DOCK SECTIONS AND DETAILS - 1

SHEET	15 OF 20
DWG No.	D-05
DATE	JAN 2019
PROJ No.	18103.00



- NOTES:**
1. FLOATING DOCK HARDWARE BY FOLLANSBEEDOCKS.COM OR APPROVED EQUAL.
 2. PILE GUIDES, CLEATS, AND BUMPERS BY MERCOMARINE.COM AND CUSTOMFLOAT.COM OR APPROVED EQUAL.
 3. 2x6 PT TIMBER DECKING AND 2x6 PT FLOAT ATTACHMENT BOARDS NOT SHOWN ON FRAMING PLAN FOR CLARITY.
 4. POLYETHYLENE FLOAT DRUMS BY PERMAFLOATS.COM, MODEL NO. DF-C-48072-24, OR APPROVED EQUAL.



**90% SUBMISSION
NOT FOR CONSTRUCTION**

THIS DRAWING IS HALF SIZE

rtg RT Group, Inc.
Engineered from the Ground UpSM
458 Grand Avenue, Suite 213
New Haven, Connecticut 06513
T 203 823 9932 F 401 294 9806
DAM SAFETY - WATERFRONT - CONSTRUCTION ENGINEERING - GEOTECHNICAL
GEO-ENVIRONMENTAL - STRUCTURAL - CIVIL

DSGN	JBR
DR	DBH
CHK	GJC
APVD	JBR

No.	DATE	BY	APVD
-----	------	----	------

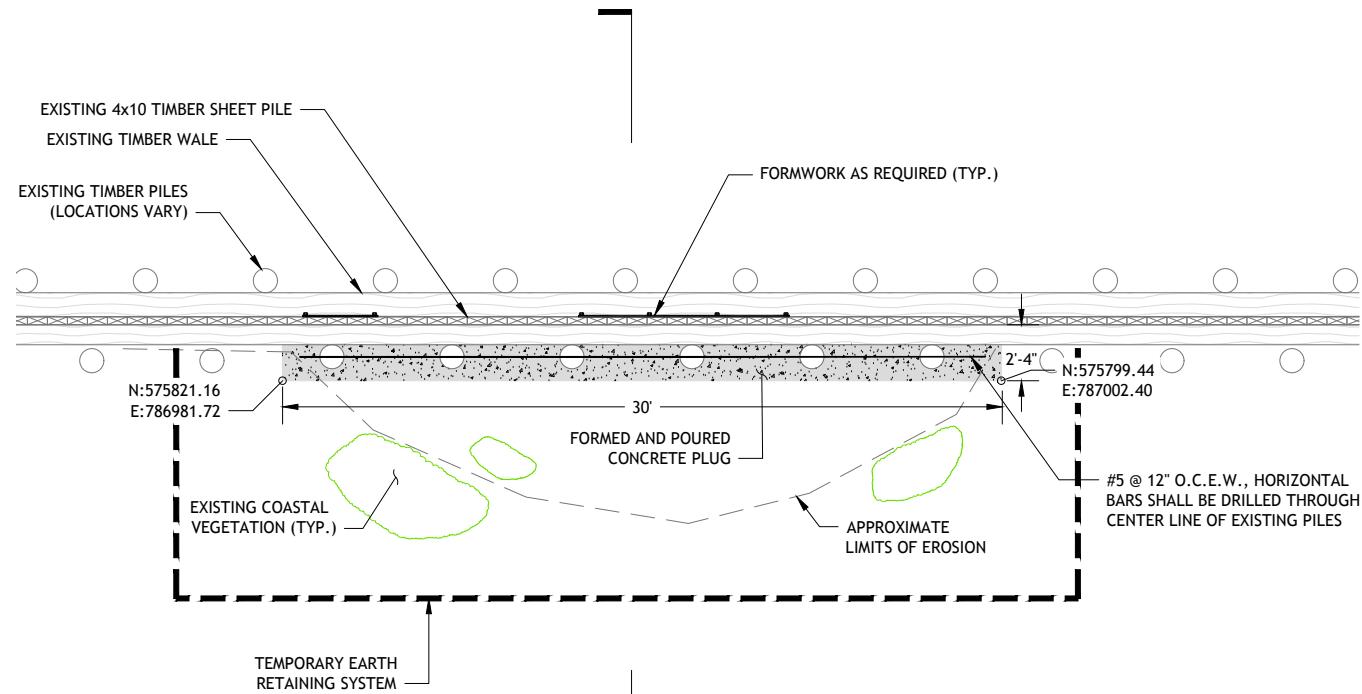
BAR IS ONE INCH ON ORIGINAL DRAWING.
0 1"
IF NOT ONE INCH ON THIS SHEET, ADJUST SCALES ACCORDINGLY



BOAT RAMP REPLACEMENT PROJECT
WEST BEACH
CITY OF STAMFORD
Stamford, Connecticut

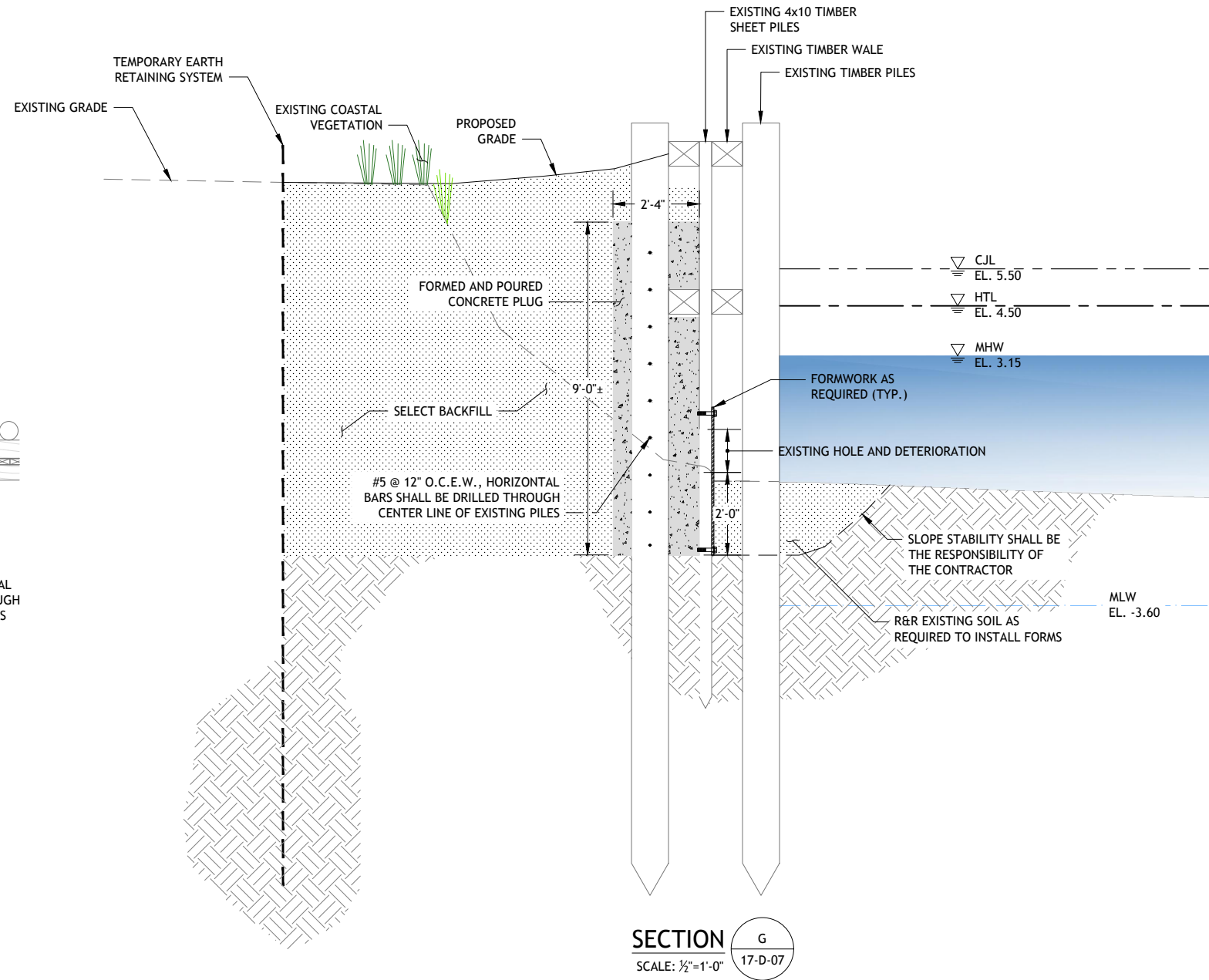
FLOATING DOCK SECTIONS AND DETAILS - 2

SHEET	16 OF 20
DWG No.	D-06
DATE	JAN 2019
PROJ No.	18103.00



G
17-D-07

PLAN
SCALE: 1/4"=1'-0"



SECTION G
SCALE: 1/2"=1'-0"

NOTES:

1. FORM SYSTEMS SHALL BE CONTRACTOR DESIGNED AND CAPABLE OF WITHSTANDING A MARINE ENVIRONMENT FOR THE DURATION OF CONSTRUCTION.
2. THE CONTRACTOR SHALL TEMPORARILY TRANSPLANT EXISTING COASTAL VEGETATION LOCATED WITHIN THE WORK ZONE DURING THE COURSE OF CONSTRUCTION AND REPLANT IT AT ITS ORIGINAL LOCATION UPON COMPLETION.
3. 30-LB TAR PAPER SHALL BE INSTALLED IN ALL TIMBER SURFACES PRIOR TO PLACING CONCRETE.
4. THE CONTRACTOR MAY ELECT TO OPEN CUT THE EXCAVATION IN LIEU OF INSTALLING A TEMPORARY EARTH RETAINING SYSTEM.

**90% SUBMISSION
NOT FOR CONSTRUCTION**

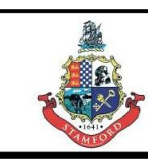
THIS DRAWING IS HALF SIZE

rtg RT Group, Inc.
Engineered from the Ground UpSM
458 Grand Avenue, Suite 213
New Haven, Connecticut 06513
T 203 823 9932 F 401 294 9806
DAM SAFETY - WATERFRONT - CONSTRUCTION ENGINEERING - GEOTECHNICAL
GEO-ENVIRONMENTAL - STRUCTURAL - CIVIL

DSGN	JBR
DR	DBH
CHK	GJC
APVD	JBR

No.	DATE
BY	APVD

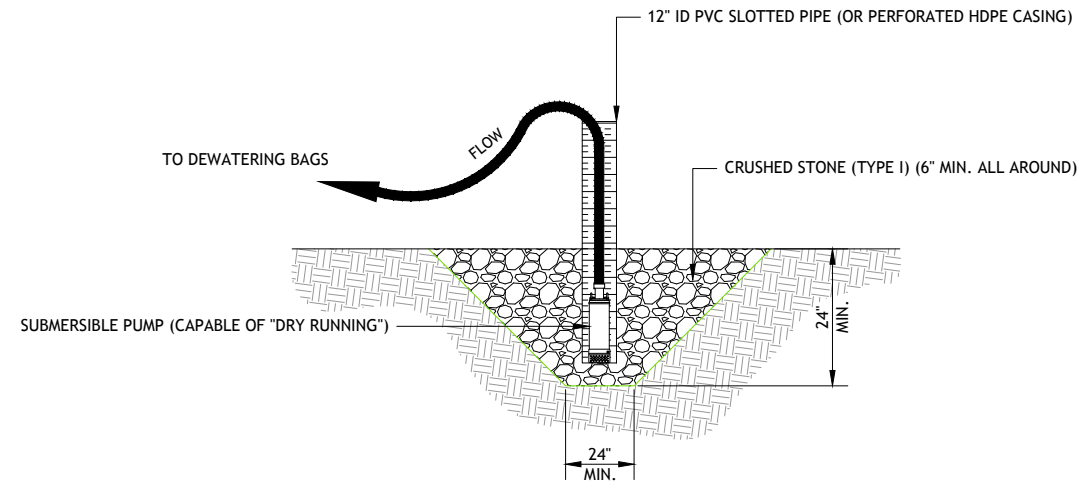
BAR IS ONE INCH ON ORIGINAL DRAWING.
0 1"
IF NOT ONE INCH ON THIS SHEET, ADJUST SCALES ACCORDINGLY



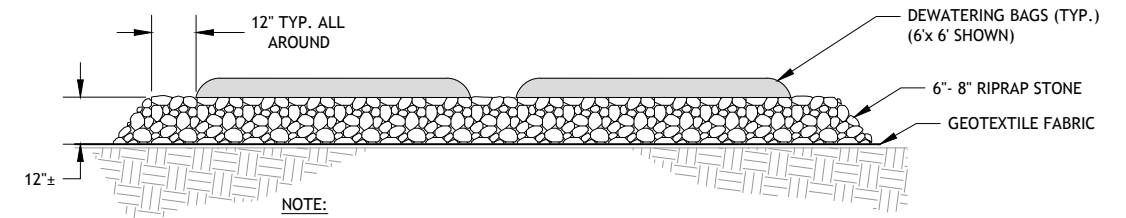
**BOAT RAMP REPLACEMENT
PROJECT
WEST BEACH
CITY OF STAMFORD
Stamford, Connecticut**

**JETTY REPAIRS PLAN
AND SECTION**

SHEET	17 OF 20
DWG No.	D-07
DATE	JAN 2019
PROJ No.	18103.00

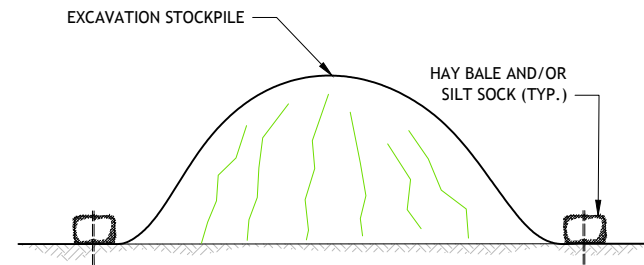
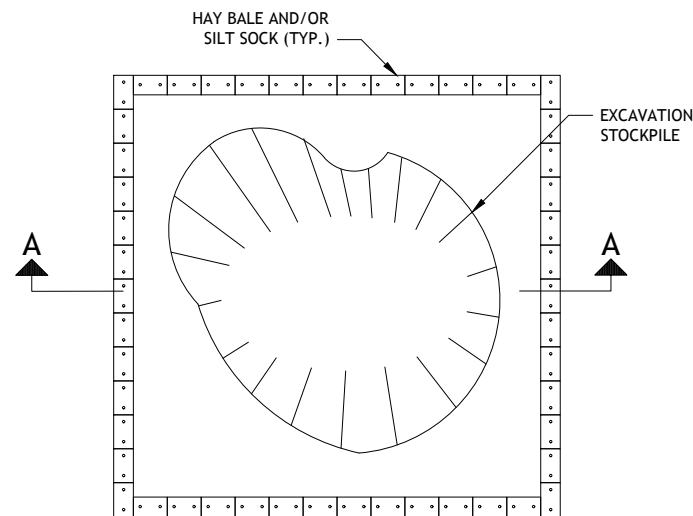


SUMP AND PUMP DETAIL
SCALE: NTS



- NOTE:**
1. SIZE AND QUANTITY TO BE DETERMINED IN FIELD.
 2. REMOVE DEWATERING BAGS, RIPRAP, AND GEOTEXTILE FABRIC IN THEIR ENTIRETY AT COMPLETION.

DEWATERING BAG DETAIL
SCALE: NTS



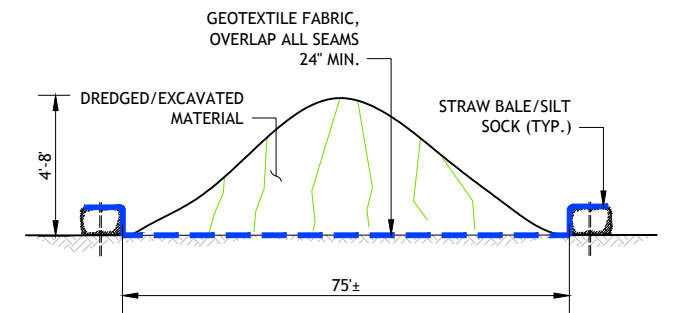
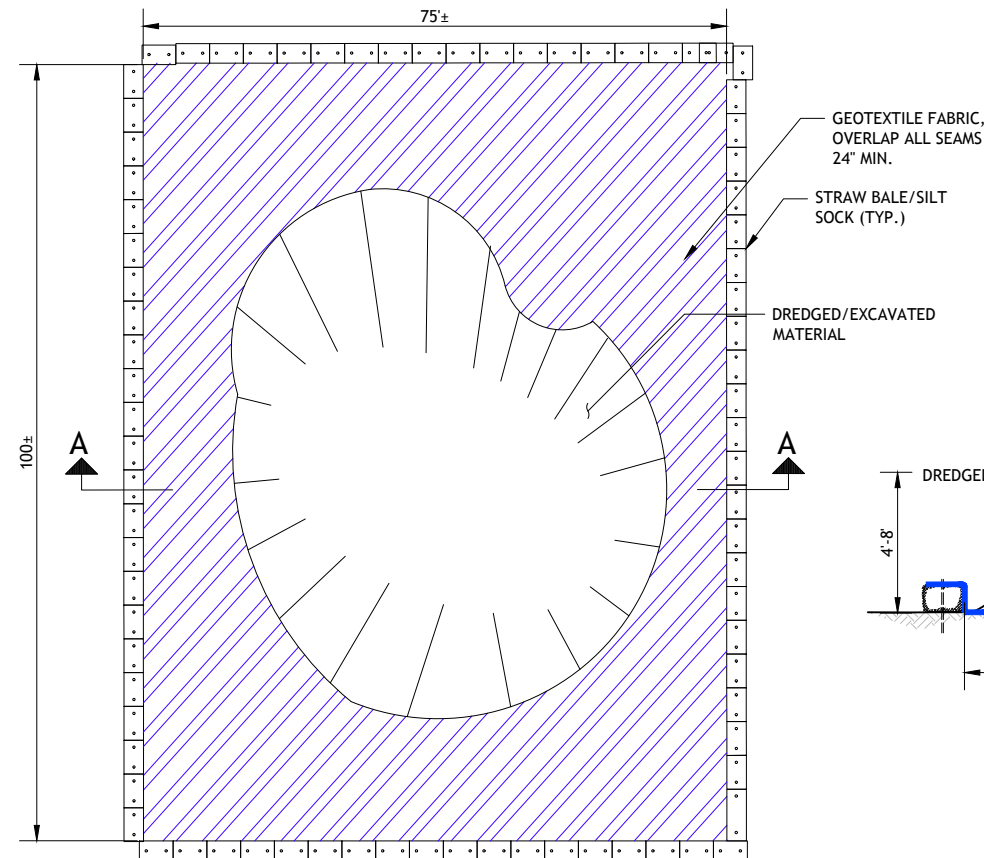
PLAN

SECTION A-A

NOTES:

1. THE STOCKPILE DETAIL SHOWN IS CONSIDERED TYPICAL AND MAY VARY.
2. SEE THE STOCKPILE MANAGEMENT NOTES SHOWN ON SHEET NO. G-03 FOR STOCKPILE REQUIREMENTS.
3. SILT SOCKS MAY BE USED IN LIEU OF HAY BALES AT THE CONTRACTOR'S DISCRETION.

STOCKPILE DETAIL
SCALE: NTS



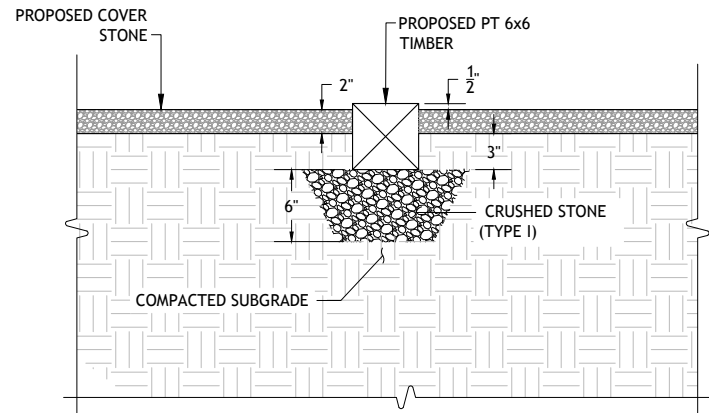
PLAN

SECTION A-A

TEMPORARY CONTAINMENT FACILITY DETAIL
SCALE: NTS

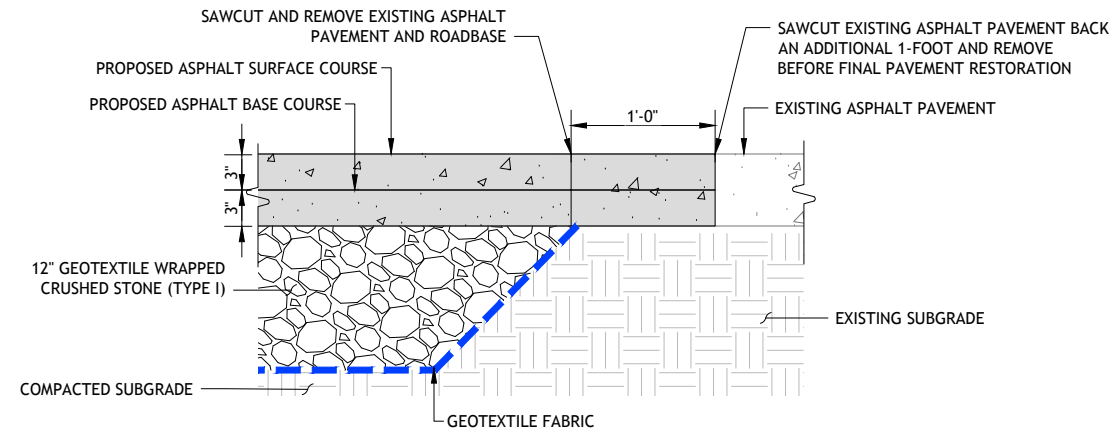
**90% SUBMISSION
NOT FOR CONSTRUCTION**

THIS DRAWING IS HALF SIZE



**TIMBER PARKING GUIDE
SETTING DETAIL**

SCALE: 1 1/2" = 1'-0"

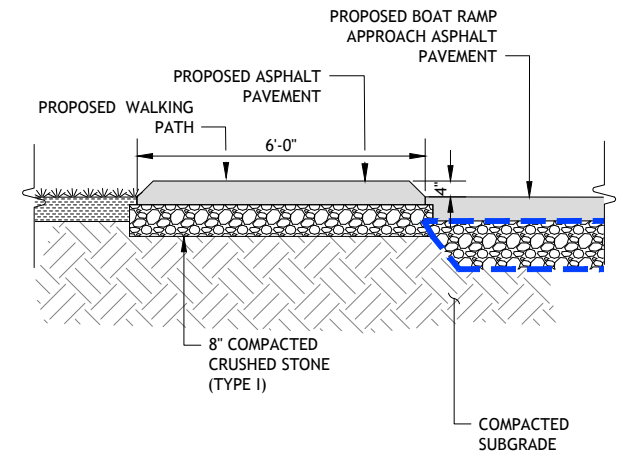


NOTE:

- CONTRACTOR SHALL APPLY AN ASPHALT EMULSION TACK COAT TO ALL SURFACES BEFORE PLACING AND COMPACTING PROPOSED ASPHALT PAVEMENT.

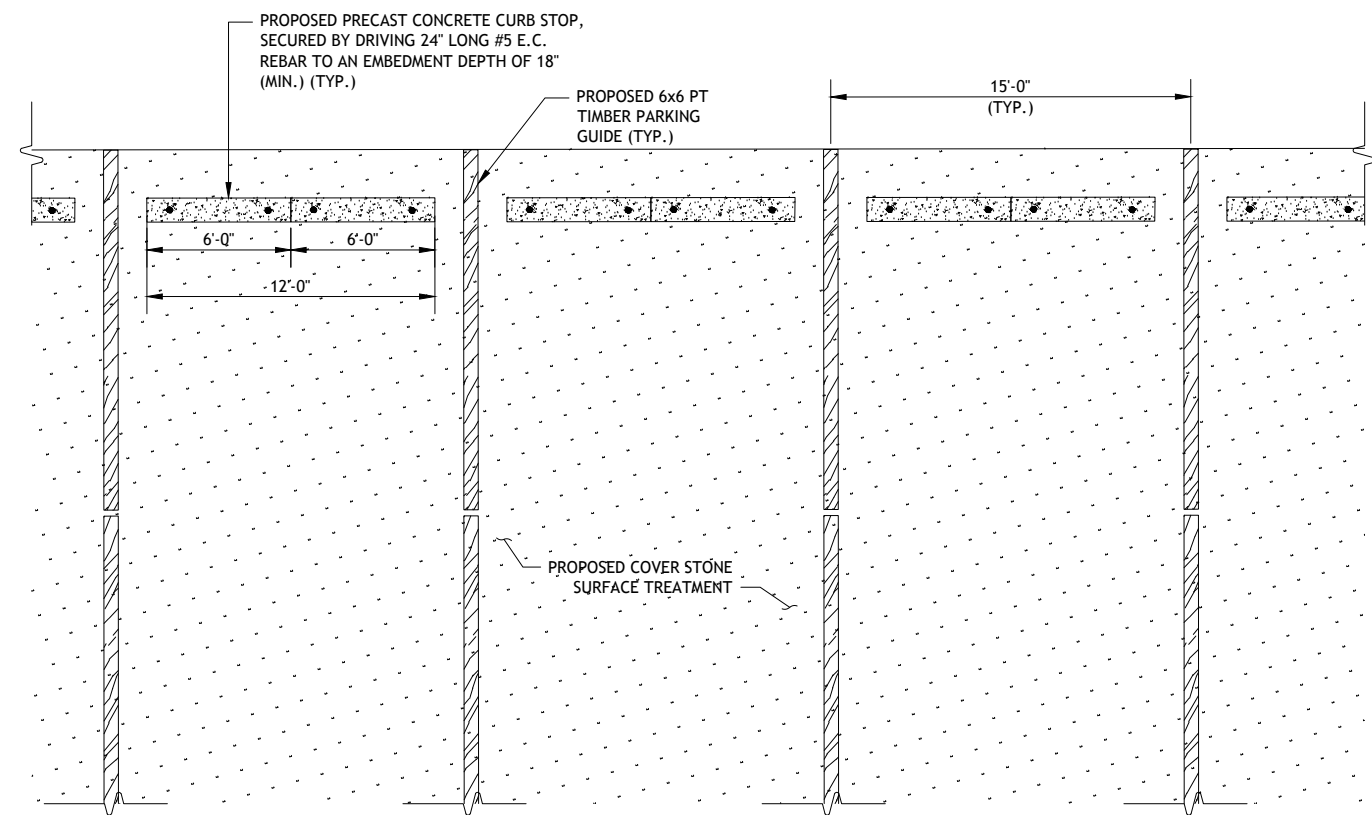
ASPHALT PAVEMENT RESTORATION DETAIL

SCALE: 1 1/2" = 1'-0"



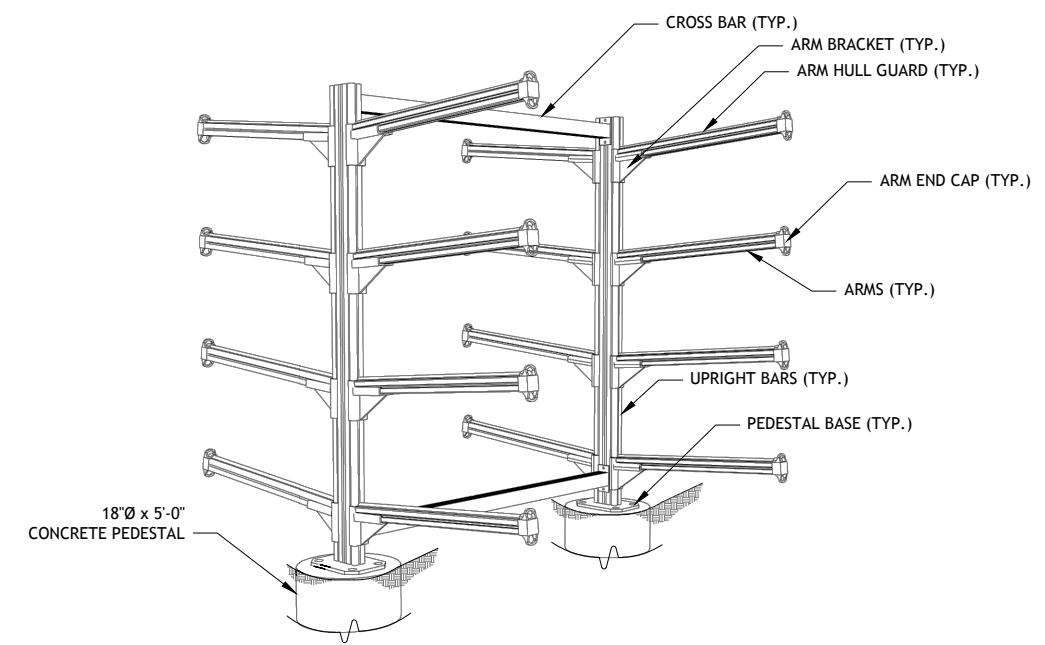
PROPOSED WALKING PATH SECTION

SCALE: NTS



PARKING LANE DETAIL

SCALE: 1/4" = 1'-0"



NOTE:

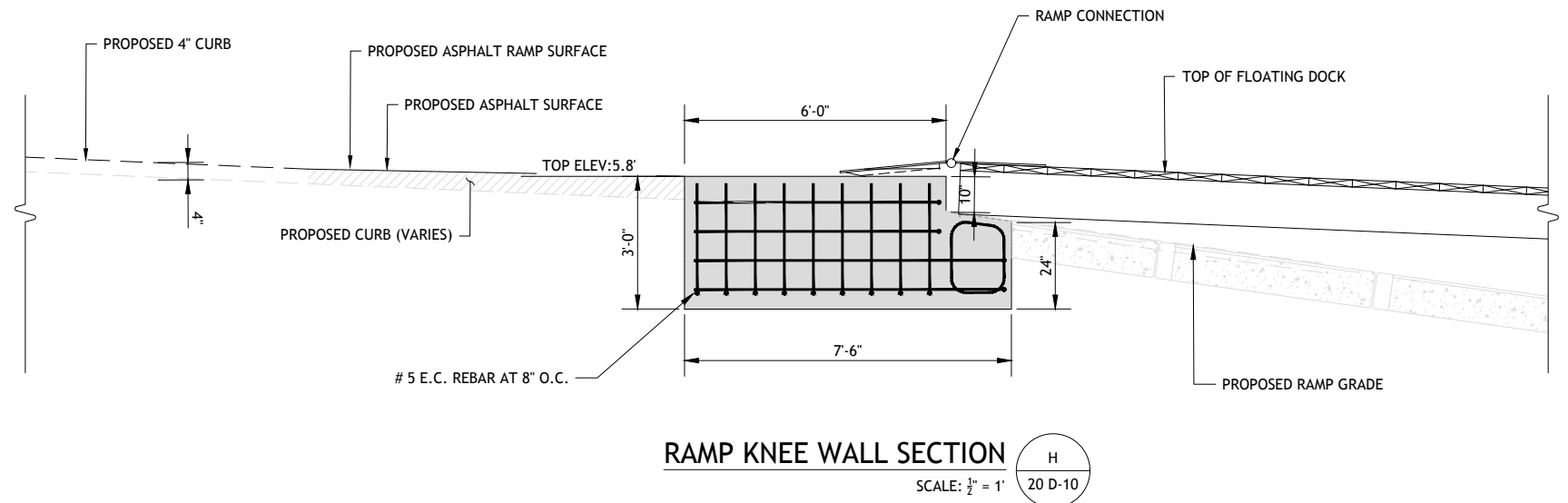
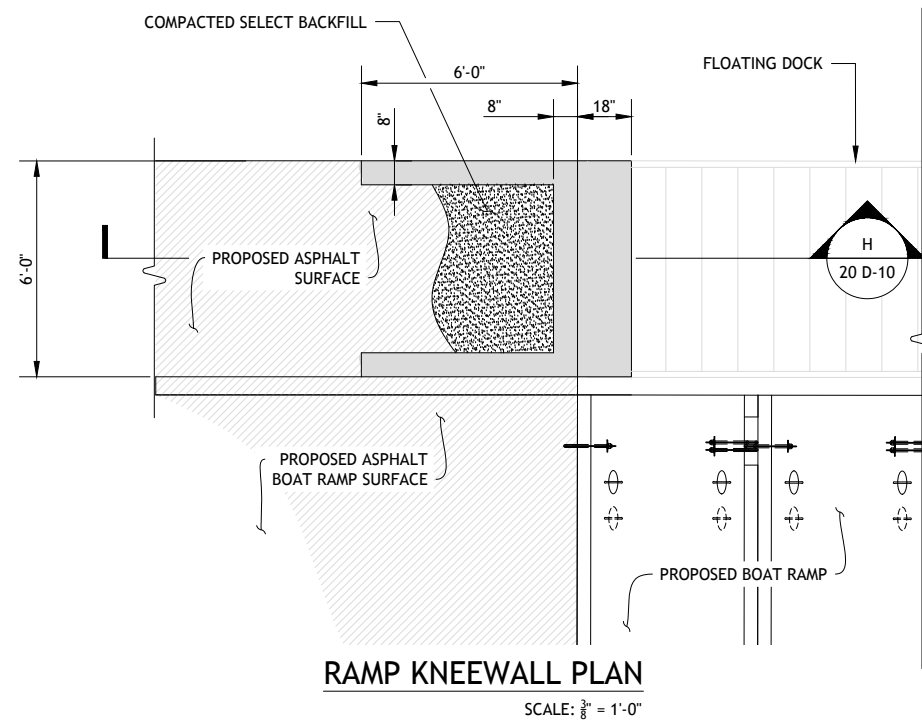
- THE KAYAK STORAGE RACK SHALL BE MODEL NUMBER SRCCM8-P AS PRODUCED BY THE DOCK DOCTORS.
- THE KAYAK RACK SHALL BE LOCKABLE WITH A STANDARD KAYAK LOCKING CABLE.

KAYAK STORAGE DETAIL

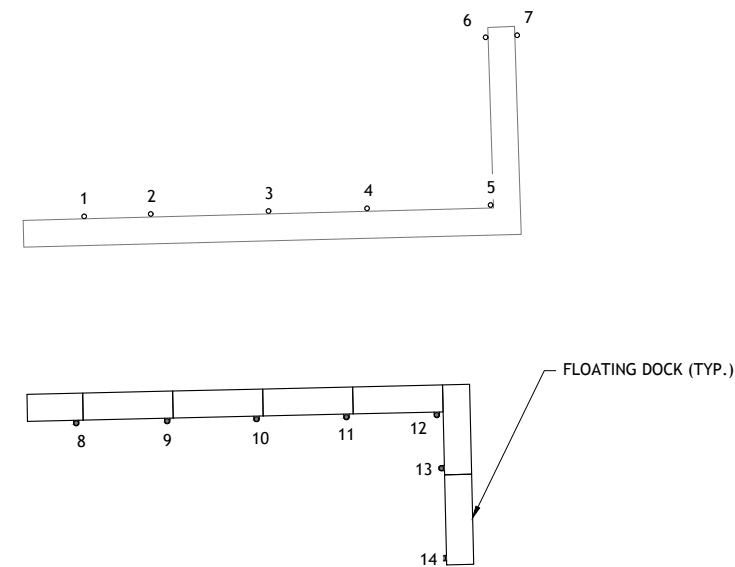
SCALE: NTS

**90% SUBMISSION
NOT FOR CONSTRUCTION**

THIS DRAWING IS HALF SIZE



GUIDE PILE INSTALLATION SCHEDULE						
PILE	CUTOFF EL. (FT)	APPROXIMATE PROPOSED MUDLINE EL. (FT)	TIP EL. (FT)	PROPOSED MIN. EMBEDMENT (FT)	MIN. FREE LENGTH FROM MUDLINE (FT)	TOTAL EST. PILE LENGTH (FT)
1	17.0	2.5	-43	45.5	14.5	60
2	17.0	1.0	-43	44.0	16.0	60
3	17.0	-2.5	-43	40.5	19.5	60
4	17.0	-6.0	-43	37.0	23.0	60
5	17.0	-10.0	-43	33.0	27.0	60
6	17.0	-8.0	-43	35.0	25.0	60
7	17.0	-10.0	-43	33.0	27.0	60
8	17.0	-3.0	-43	46.0	14.0	60
9	17.0	0.0	-43	53.0	7.0	60
10	17.0	-3.0	-43	40.0	20.0	60
11	17.0	-6.0	-43	37.0	23.0	60
12	17.0	-9.0	-43	34.0	26.0	60
13	17.0	-9.0	-43	34.0	26.0	60
14	17.0	-9.0	-43	34.0	26.0	60



**90% SUBMISSION
NOT FOR CONSTRUCTION**

THIS DRAWING IS HALF SIZE

