



# Troy Field Bathrooms

---

JUNE 21<sup>ST</sup>, 2023



# Agenda

---



- League Overview
- Original Meeting Review from May 18th 2022
- Benefit/Comparisons
- Drawings/Plans
- Where we are today
- Questions/Closeout

# League Overview



- Official Registered name of State entity is Stamford Troy Softball, INC - established in 2019
- We go by the name Stamford Stars Softball
- We are a City of Stamford/Parks and Recreation Sanctioned League
- We are a member-based organization – all registered players - parents/guardians/wards are voting members of organization
- League is run by Board of Directors with 4 Officers positions.
- Our 2023 total player enrollment was 330 female players (plus family members at Troy fields)

# League Overview



- Stars softball consists of three different softball programs, some with multiple divisions in each
  - House Softball (runs from mid April – mid October)
    - Rookies Division (4-6 year olds)
    - Minis Division (6-8 year olds)
    - Minors Division (8-10 year olds)
    - Majors Division (11-13 year olds)
  - Middle School Softball (runs for three weeks in May)
  - Travel Softball (runs from September through July/August)
    - 8U Division
    - 10U Division
    - 12U Division

# May 18<sup>th</sup> 2022 PRC Meeting



- Meeting with PRC to request their approval to start the process of installing permanent bathrooms at Troy fields
- Overview of preliminary plans
- Funding and Maintenance questions
- Composting Toilets be considered
  - Roughly 10x \$\$ more than regular toilets
  - Power, Maintenance and emptying is needed
  - Holding tanks be installed (emptied etc.)
- General Q and A
- Motion was made and approved by PRC

## Benefits/Comparisons

---

- Cleanliness
- Park aesthetics Improved
- Park Facilities Improved
- City of Stamford Improved
- More Stamford youth willing to join our league/play softball
- Running water
- NOTE: We polled our membership (Stamford residents) asking for ways to make our league better. The overwhelming answer was to install permanent bathrooms
- Only all girl's youth league in Stamford that utilizes outdoor facilities. When compared to Little leagues, mostly all LL fields have built in restrooms except:
  - Northrop Field
  - Kane Ave

# Benefits/Comparisons




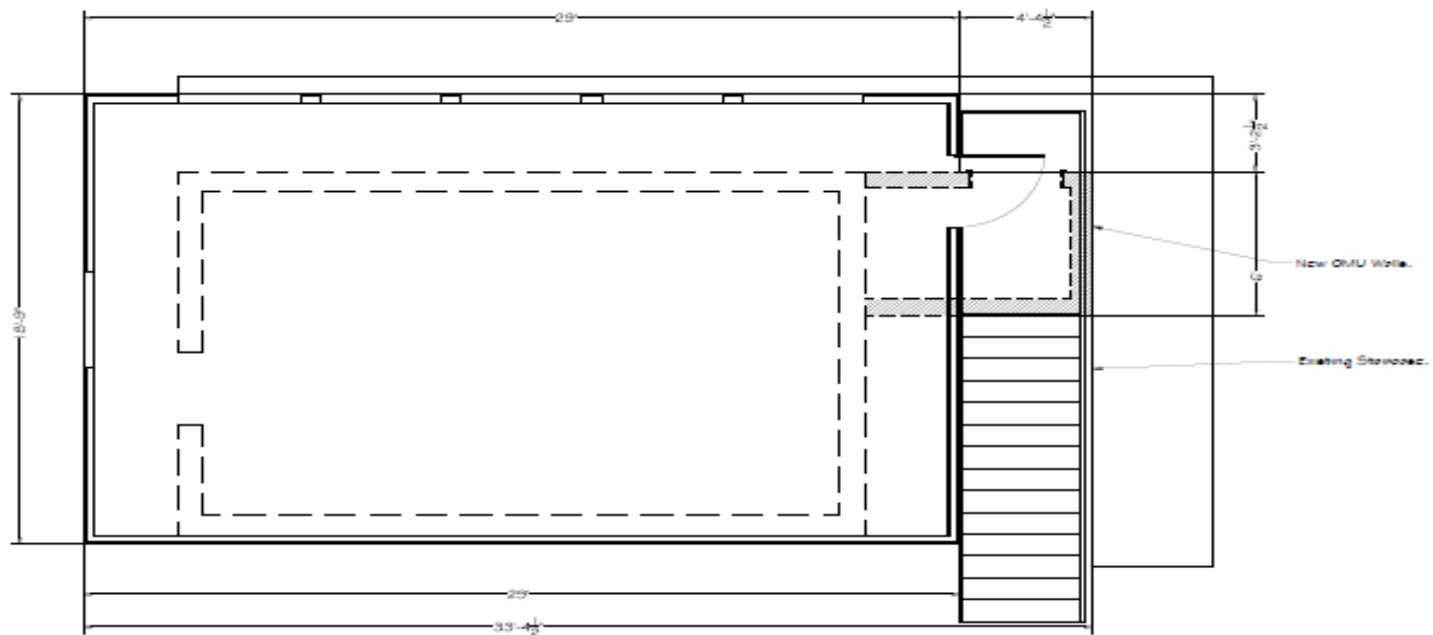




# Plans

## WALL LEGEND

 PROPOSED FOUNDATION WALLS



1 Proposed Plan View  
SCALE: 1/2" = 1'-0"



# Plans - Pictures



# Plans - Pictures



# Where we are Today

---



- We have paid for an architect and received the plans we just reviewed
- We are in the permitting process with the City of Stamford and also need to perform a Coastal Site Review Plan
- We have received bids for the project and have chosen a vendor/contractor
- Final Steps before construction would be PRC approval and Building Dept/Permit Approval

# Q&A and Thank you

---



- General Q & A
- Thank you for your time