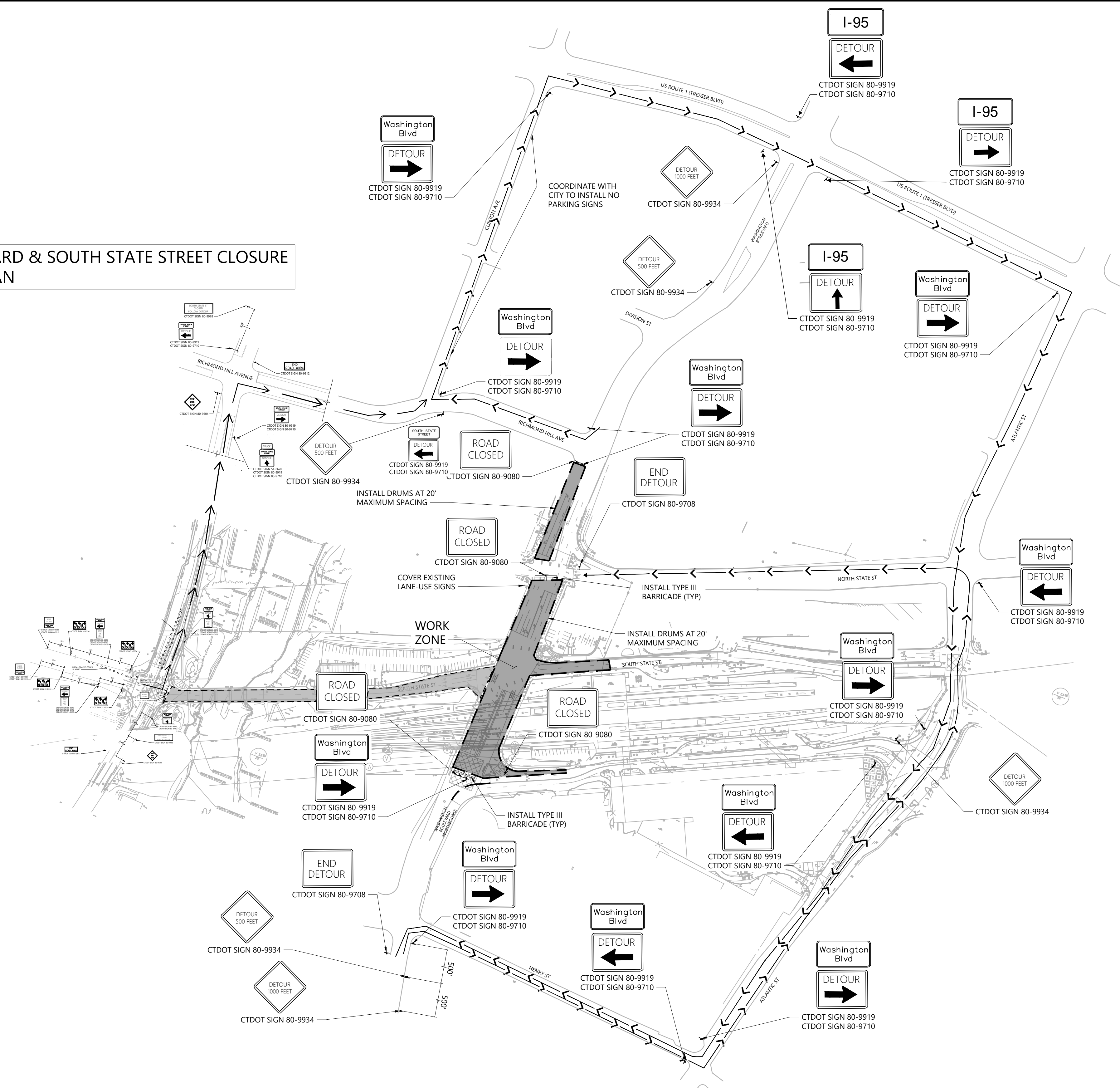
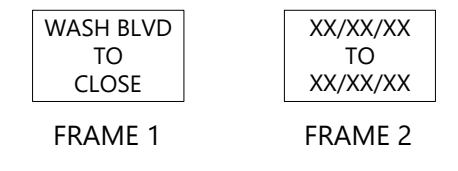


**WASHINGTON BOULEVARD & SOUTH STATE STREET CLOSURE  
VEHICULAR DETOUR PLAN**



NOTE:  
WORK TO BE COORDINATED WITH CITY OF STAMFORD FOR POLICE PRESENCE.

AT LEAST 2 WEEKS PRIOR TO IMPLEMENTING THE DETOUR, CMS SIGN SHOULD BE POSTED AT BOTH LIMITS OF THE CLOSURE ON WASHINGTON BOULEVARD TO INFORM MOTORISTS OF THE CLOSURE:



AT LEAST 1 WEEK PRIOR TO THE DETOUR, THE CONTRACTOR SHALL NOTIFY THE CITY, DISTRICT 3 CONSTRUCTION, AND ALL EMERGENCY SERVICES.

LANE CLOSURES WILL BE IMPLEMENTED AS NEEDED ON A DAILY BASIS DURING NON-PEAK HOURS. NON-PEAK HOURS ARE EFFECTIVE IN THIS CASE FROM 07:00PM TO 07:00AM. LANE CLOSURES WILL NOT BE IMPLEMENTED DURING THE MID-DAY NON-PEAK PERIOD FROM 10:00AM TO 04:00PM.

DETOUR SIGNS SHOULD BE COVERED WHEN THE DETOUR IS NOT IN EFFECT. DETOUR SIGNS TO BE REMOVED WHEN THE DETOUR IS NO LONGER NEEDED.

EXISTING SIGNS WHICH CONFLICT WITH THE DETOUR SIGNS SHALL BE TEMPORARILY COVERED, REMOVED OR REVISED AS DIRECTED BY THE ENGINEER. EXISTING SIGNS SHALL BE RESTORED WHEN THE DETOUR IS NO LONGER NEEDED.

REV.	DATE	REVISION DESCRIPTION	ISSUE: FINAL DESIGN
3	2/2/2023	CTDOT COMMENTS REV 2	
2	12/15/2022	RELEASED FOR CONSTRUCTION REV 1	
1	08/12/2022	CTDOT COMMENTS	
0	7/21/2022		

DESIGNER/DRAFTER: WK  
CHECKED BY: CB  
SCALE IN FEET  
0 75 150 300  
SCALE 1"=150'



**Yonkers Contracting Company, Inc.**

**WALKER CONSULTANTS**

**vhb**

**RELEASED FOR CONSTRUCTION DOCUMENTS**

PROJECT TITLE: **STAMFORD PARKING GARAGE**

TOWN: **STAMFORD**

DRAWING TITLE: **MAINTENANCE AND PROTECTION OF TRAFFIC - STAGE 8**

PROJECT NO. **301-0047**

DRAWING NO. **MPT-014**

SHEET NO. **04.26**