



# Welcome!

## Springdale Train Station Transit Oriented Development (TOD) Improvements State Project: 135-348

### Public Information Meeting Thursday, October 6

# Zoom Webinar Overview



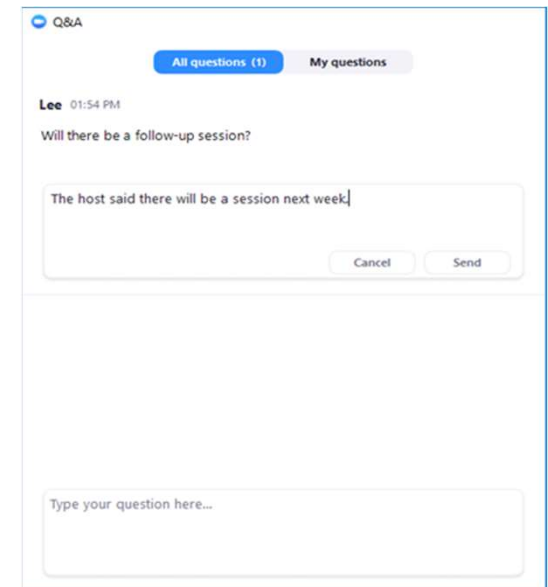
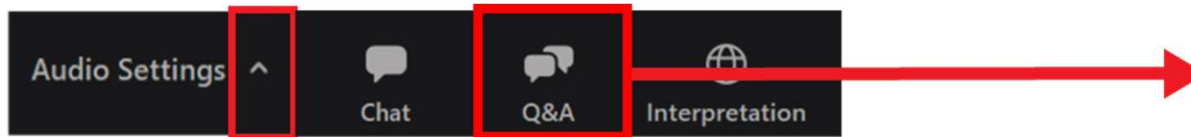
**To communicate with the project team Select the “Q&A” function**

- Technical support
- Questions or comments throughout the presentation that will be addressed at the end of the presentation



**Check or change your audio settings:**

- Click the arrow upwards to change your speaker



# Project Representatives

- Luke Bittenwieser, City of Stamford
- Janeene Freeman, City of Stamford
- Steven George, PE, WSP
- Vahid Karimi, PE, WSP
- Kati Mercier, PE, WSP

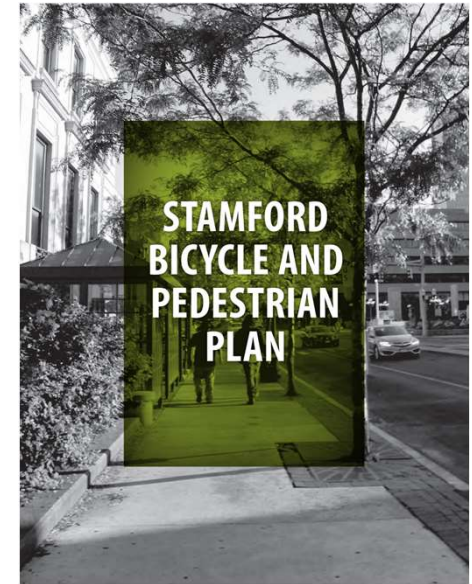
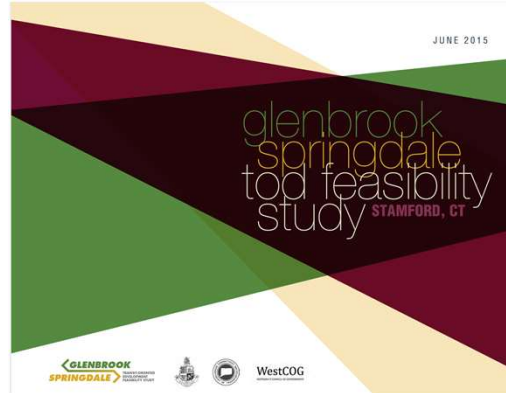
# Planning and Policy Background

# What Drives Our Designs

- We design with Safety First in mind
  - Vision Zero Mindset
    - The Safe Systems Approach
      - Human Centered and Proactive Street Design
      - People make mistakes, but those mistakes shouldn't be deadly
      - Shift away from individual blame
      - Keep *all* road users safe by designing for the most vulnerable
      - Prevent errors as much as possible and lessen the impacts of errors when they do happen
- Design for ALL ages and abilities

# City Policies and Plans

- 2015 Complete Streets Ordinance
- 2015 Glenbrook/Springdale TOD Study
- 2015 Stamford Master Plan
- 2019 Stamford Bike/Ped Master Plan
- 2020 Board of Representatives Share Mobility Principals Resolution
- 2022 Board of Representatives Climate Emergency Resolution
- 2022 Stamford Vision Zero Executive Order





# Project Area



# Project Purpose and Need

- Advance the recommendations from the *Glenbrook/Springdale Transit-Oriented Development (TOD) Feasibility Study, June 2015*
- Strengthen the village center along Hope Street
- Improve access to transit
- Provide improved multi-modal connectivity
- Realign Springdale Station Parking Lot entrance with Clearview Avenue
- Improve Springdale Station Parking Lot circulation
- Signal timing improvements at Largo Drive
- Traffic calming and gateway improvements on Hope Street





# What We Hear From the Community

- Speeding on Hope Street
- Difficulty crossing Hope Street at Clearview Avenue
- Streetscape improvements on Hope Street
- Make the Station fully and safely accessible for bikers, pedestrians, and vehicles
- Improve Pedestrian and bicycle network
- Improve and expand sidewalks throughout neighborhood



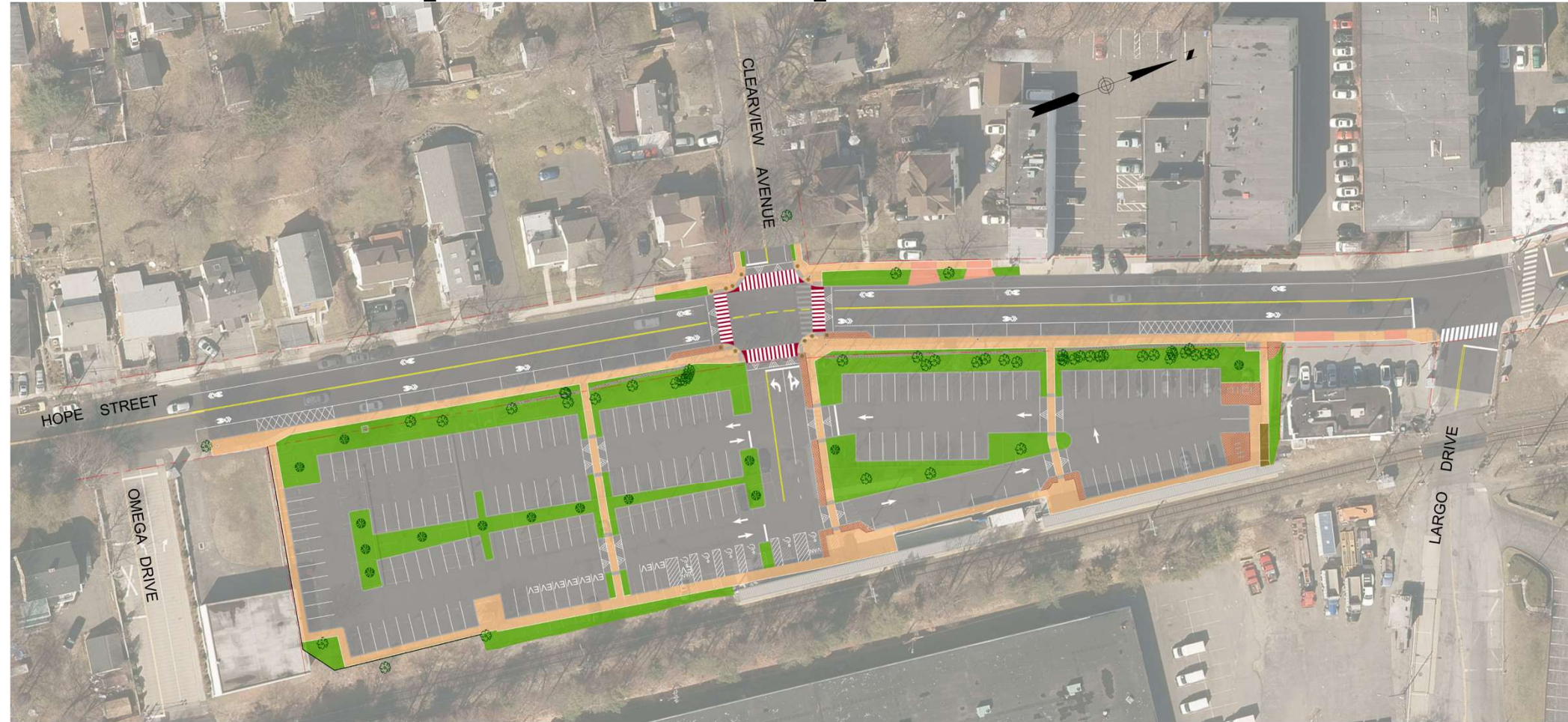
# Glenbrook/Springdale Transit-Oriented Development (TOD) Feasibility Study

June 2015





# Proposed Improvements



City of Stamford Springdale Train Station TOD Improvements



# Multimodal Transportation

MODE	LEVEL OF SERVICE FACTORS
Walking	Sidewalk/path quality, ADA compliance, street crossing conditions
Cycling	Path quality, street riding conditions, parking conditions, security
Ridesharing	Ride sharing services
Public transit	Service coverage, frequency, speed (relative to driving), waiting area comfort, user information, security
Automobile	Speed, congestion delay, roadway conditions, parking convenience, safety



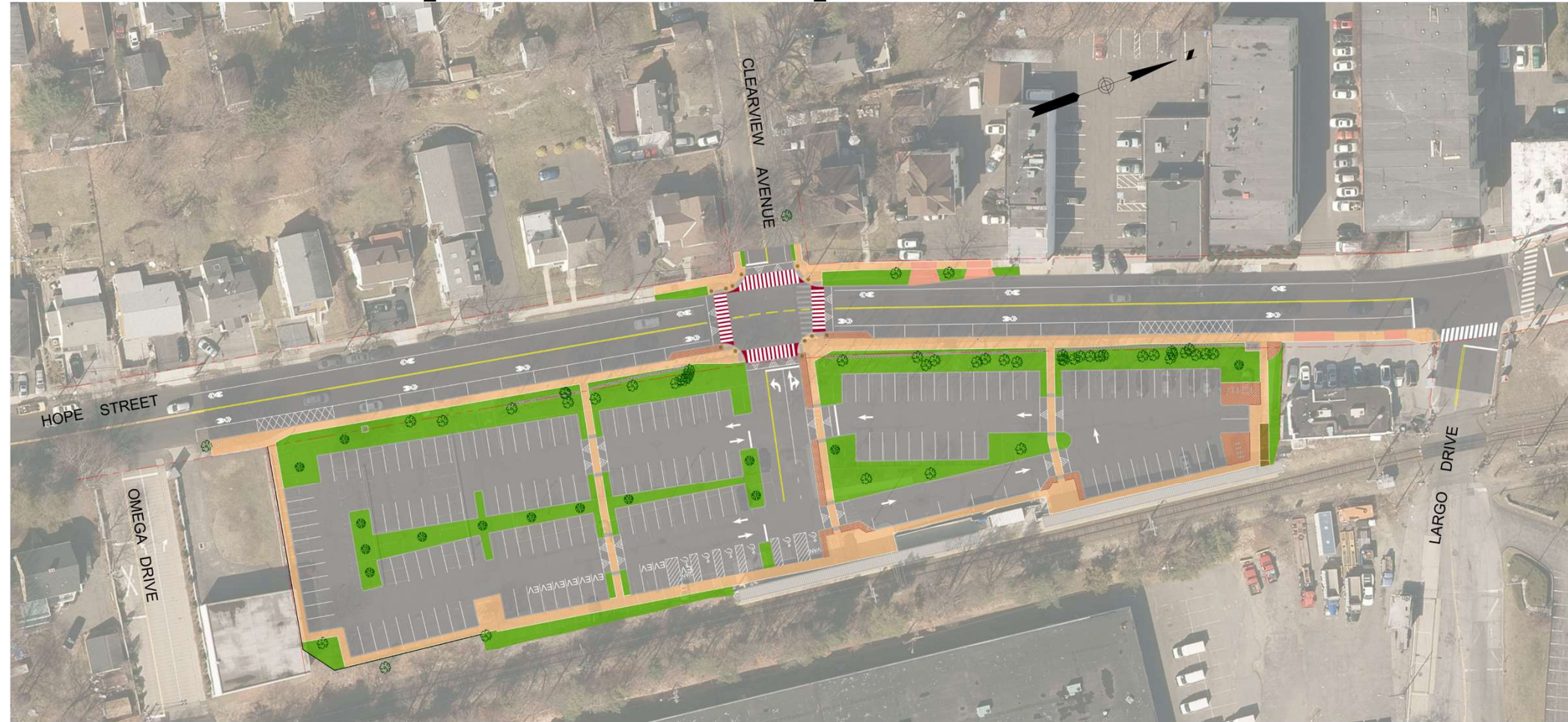
# Engineering Approach to Support Springdale TOD

## Safety – Mobility – Access

- **Existing condition**
  - Safety Analysis
  - Operations Analysis
- **Future condition**
  - Traffic forecasting
  - Operations Analysis
- **Safety & Operational Improvements**
  - Enhance Multimodal Transportation
    - Walking, cycling, ridesharing, public transit, automobile
    - Improved sidewalks and connectivity to Springdale Center
    - Improved bus stops and accessibility
  - Hope Street and Largo Drive intersection
    - Improve pedestrian crossings and vehicular operation
  - Hope Street traffic calming measures
    - Raised intersection and curb extension for improved pedestrian crossings
  - Hope Street and Clearview Avenue intersection
    - Realignment of station driveway to form a 4-way intersection
    - Installation of RRFB for pedestrian crossings on Hope Street



# Proposed Improvements



City of Stamford Springdale Train Station TOD Improvements





# Hope Street

## Gateway to Springdale Village District

Realign Springdale Station Parking  
Lot entrance with Clearview Avenue



Raised Intersection 2-way stop  
sign controlled

- Slow traffic speeds with raised intersection
- Shorten pedestrian crossing time and ADA accessibility
- Rectangular Rapid-Flashing Beacons (RRFBs)



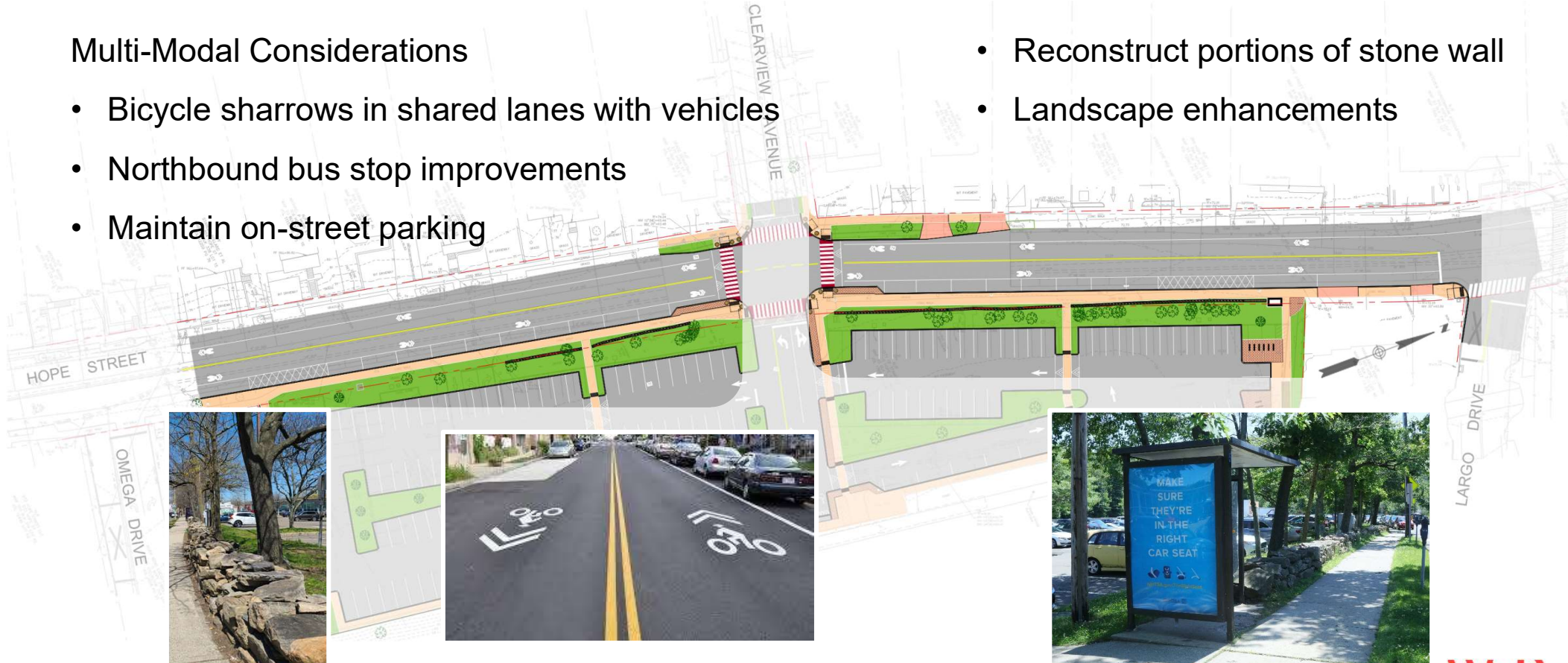
# Hope Street

## Gateway to Springdale Village District

### Multi-Modal Considerations

- Bicycle sharrows in shared lanes with vehicles
- Northbound bus stop improvements
- Maintain on-street parking

- Reconstruct portions of stone wall
- Landscape enhancements





# Springdale Station Parking Lot

- Improved “Kiss and Ride” drop off area (5 spaces) in northern portion of parking lot
- Northern lot with one-way circulation
- Bicycle parking
- Raised pedestrian crossings from Hope Street to Station
- Landscape enhancements, maintaining existing and adding new
- Illumination enhancements
- New accessibility ramp to the platform at north end



# Springdale Station Parking Lot

- Southern lot with traditional two-way circulation
- Elimination of existing tightly spaced parking lot
- Raised pedestrian crossings from Hope Street to Station
- ADA parking
- Electric vehicle parking
- Landscape enhancements, maintaining existing and adding new
- Illumination enhancements





# Public Access During Construction

- Disruption and inconvenience will be minimized
- Construction will be staged
  - Maintain existing Hope Street, Clearview Avenue, and Largo Drive travel lanes
  - Maintain a portion of the parking lot
- Police Officers/Flaggers utilized during various construction operations
- Maintain access to Station, businesses, and residences at all times
- Provide safe pedestrian access during construction

# Impacts

- No Acquisitions or Easements anticipated
- Potential for Temporary Impacts
  - Right to Grade, Reconstruct Driveway/Parking, Sidewalk, Curbing, Fence, etc.
- Drainage
  - Hope St: Minor modifications at raised intersection while maintaining trunk lines
  - Parking Lot: Modifications to inlet structures for parking lot reconfiguration
- Utilities (Electric, water, sanitary, gas)
  - No relocations anticipated
  - Coordination with utilities
- No Wetlands or Natural Resource Impacts Anticipated



# Construction Schedule

Conceptual  
2022

Public  
Information  
Meeting  
October 6

Design  
Completion  
June 2023

Anticipated  
Construction  
Start  
Fall 2023

Anticipated  
Construction  
Completion  
2024

## Additional Public Information Meetings

- Prior to Design Completion
- Prior to Construction Start

# Questions



# Any Additional Questions/Comments Contact:

Luke Bittenwieser, City of Stamford

203-977-5675



[LButtenwieser@StamfordCT.gov](mailto:LButtenwieser@StamfordCT.gov)

Project Website