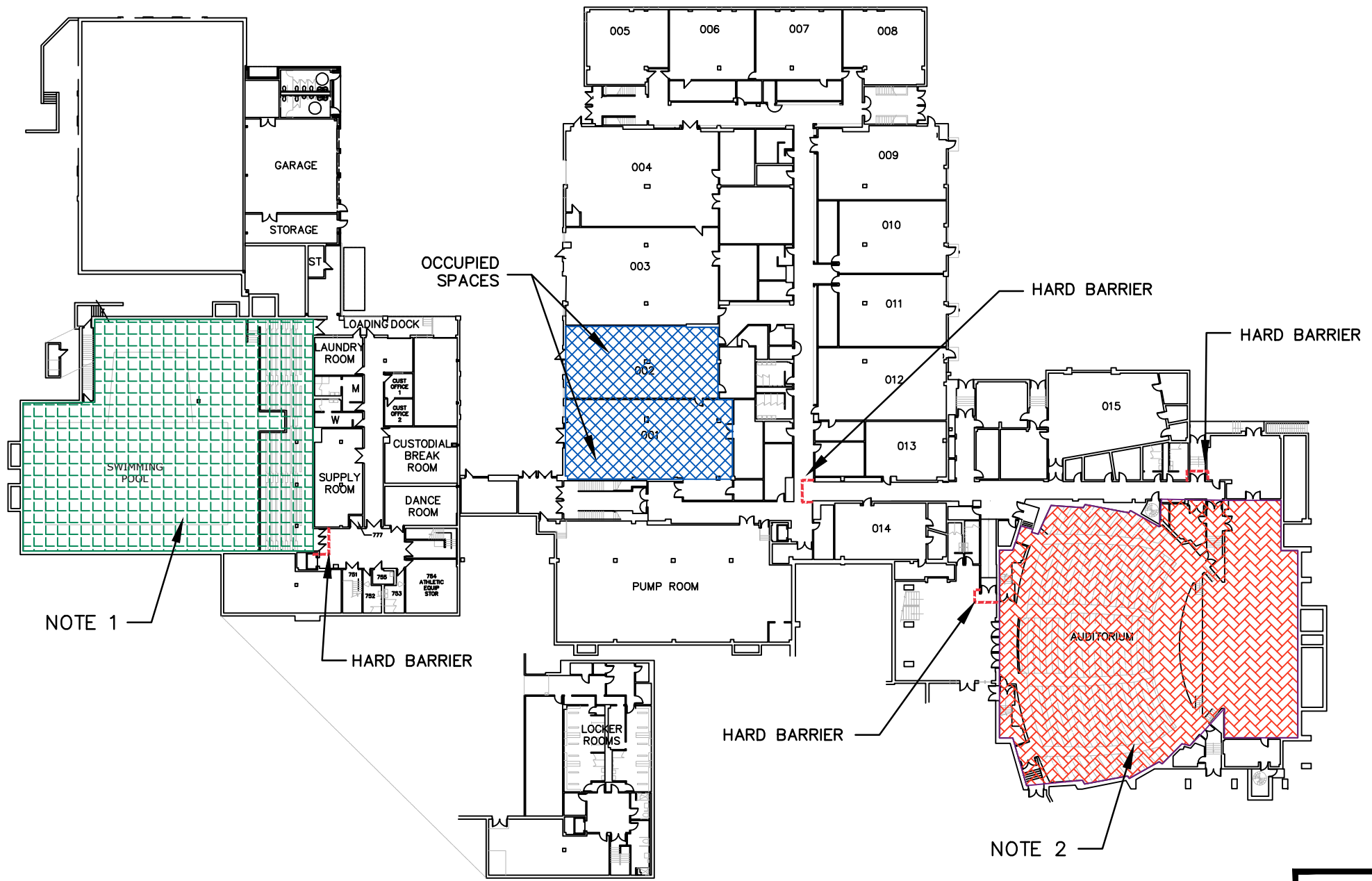
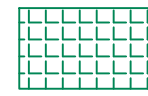


Jul 24, 2019 2:16pm Plotted By: TAdomeit Tighe & Bond, Inc. J:\S\2087 Stamford\033 Mold Remediation Consulting\Sites\Westhill\Drawings\CAD\Westhill School Mold Remediation.DWG

LOWER LEVEL



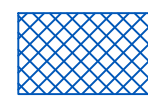
LEGEND



NOTE -01 -
 REMOVE 1'X1', 2'X2', AND 2'X4' CEILING TILES AND BACK UP BEHIND 1'X1' CEILING TILES.
 REMOVE ASBESTOS-CONTAINING CEMENT BOARD DUCTWORK
 CLEAN AND DISINFECT AREA
 CONDUCT WORK WITHIN NEGATIVE PRESSURE TWO LAYER CONTAINMENT WITH CONTIGUOUS THREE STAGE WORKER DECONTAMINATION UNIT AND TWO STAGE WASTE LOAD OUT DECONTAMINATION UNIT



NOTE-02 -
 REMOVE DUCT INSULATION THROUGHOUT INCLUDING ASBESTOS-CONTAINING TAN GLUE AND NON-ASBESTOS FIBERGLASS INSULATION
 CLEAN AND DISINFECT AREA INCLUDING HIGH CEILINGS, DUCTWORK, HVAC VENTS, SPRINKLER PIPE, AND LIFTS
 CONDUCT WORK WITHIN NEGATIVE PRESSURE TWO LAYER CONTAINMENT WITH CONTIGUOUS THREE STAGE WORKER DECONTAMINATION UNIT AND TWO STAGE WASTE LOAD OUT DECONTAMINATION UNIT



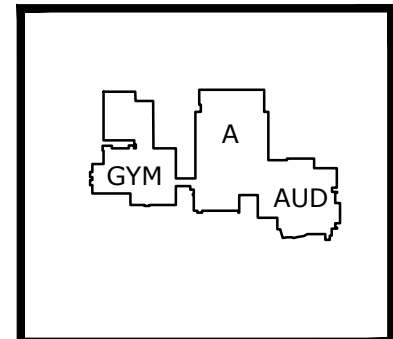
OCCUPIED SPACES
 STUDENTS WILL BE PRESENT IN CLASSROOMS 001 AND 002 DURING ABATEMENT ACTIVITIES



HARD BARRIER

NOTE 1

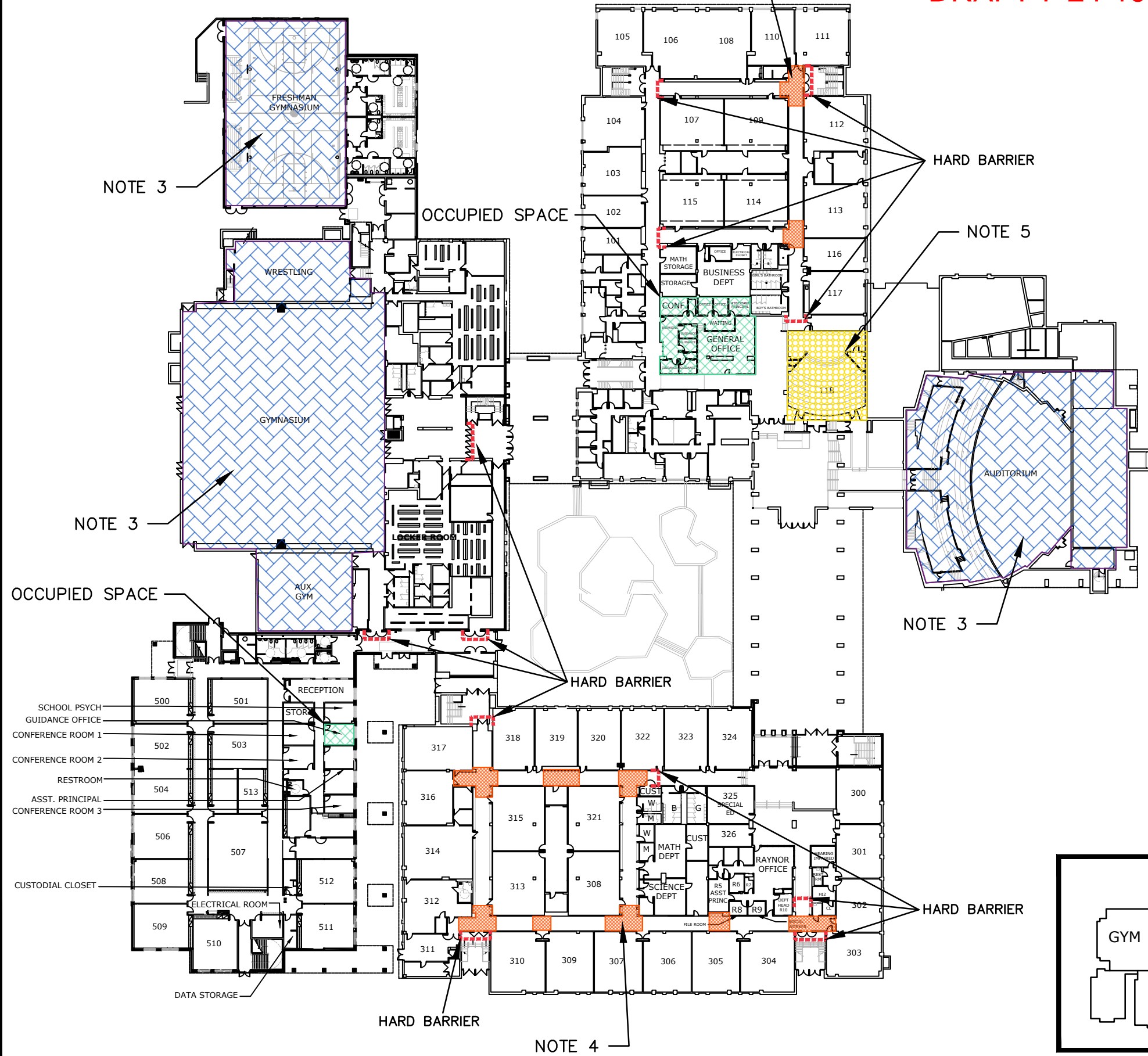
NOTE 2








WESTHILL SCHOOL STAMFORD, CONNECTICUT	
SUMMER 2019 WORK LOWER LEVEL	
DATE: 7/24/2019	Tighe & Bond Engineers Environmental Specialists
NOT TO SCALE	
FIGURE: 3.1	

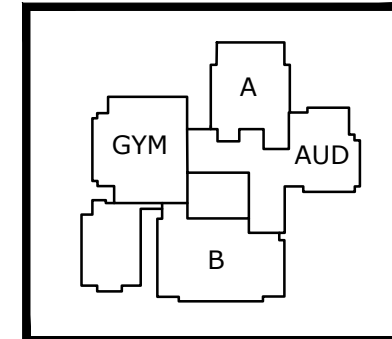
FIRST FLOOR

DRAFT 7-24-19



LEGEND

-  NOTE-03 - REMOVE DUCT INSULATION THROUGHOUT INCLUDING ASBESTOS-CONTAINING TAN GLUE AND NON-ASBESTOS FIBERGLASS INSULATION
CLEAN AND DISINFECT AREA INCLUDING HIGH CEILINGS, DUCTWORK, HVAC VENTS, SPRINKLER PIPE, AND LIFTS
CONDUCT WORK WITHIN NEGATIVE PRESSURE TWO LAYER CONTAINMENT WITH CONTIGUOUS THREE STAGE WORKER DECONTAMINATION UNIT AND TWO STAGE WASTE LOAD OUT DECONTAMINATION UNIT
-  NOTE-04 - REMOVE DRYWALL/ASBESTOS-CONTAINING JOINT COMPOUND AND INSULATION THROUGHOUT INCLUDING ASBESTOS-CONTAINING SADDLE INSULATION AND NON-ASBESTOS FIBERGLASS INSULATION
CLEAN AND DISINFECT AREA CONDUCT WORK WITHIN NEGATIVE PRESSURE TWO LAYER CONTAINMENT WITH CONTIGUOUS THREE STAGE WORKER DECONTAMINATION UNIT AND TWO STAGE WASTE LOAD OUT DECONTAMINATION UNIT
-  NOTE-05 - REMOVE WATER STAINED/GROWTH IMPACTED 1'X1' CEILING TILES
CLEAN AND DISINFECT AREA
CONDUCT WORK WITHIN NEGATIVE PRESSURE ONE LAYER CONTAINMENT
-  OCCUPIED SPACES
STUDENTS WILL BE PRESENT IN MAIN OFFICE AND GUIDANCE OFFICE DURING ABATEMENT ACTIVITIES
-  HARD BARRIER



WESTHILL SCHOOL STAMFORD, CONNECTICUT	
SUMMER 2019 WORK FIRST FLOOR	
DATE: 7/24/2019	Tighe & Bond Engineers Environmental Specialists
NOT TO SCALE	
FIGURE: 3.2	

Jul 24, 2019 9:13am Plotted By: TAdomeit Tighe & Bond, Inc. J:\S\S\2087 Stamford\033 Mold Remediation Consulting\Sites\Westhill\Drawings\CAD\Westhill School Mold Remediation.DWG

SECOND FLOOR

DRAFT 7-24-19

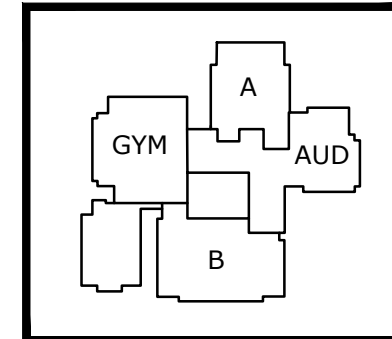
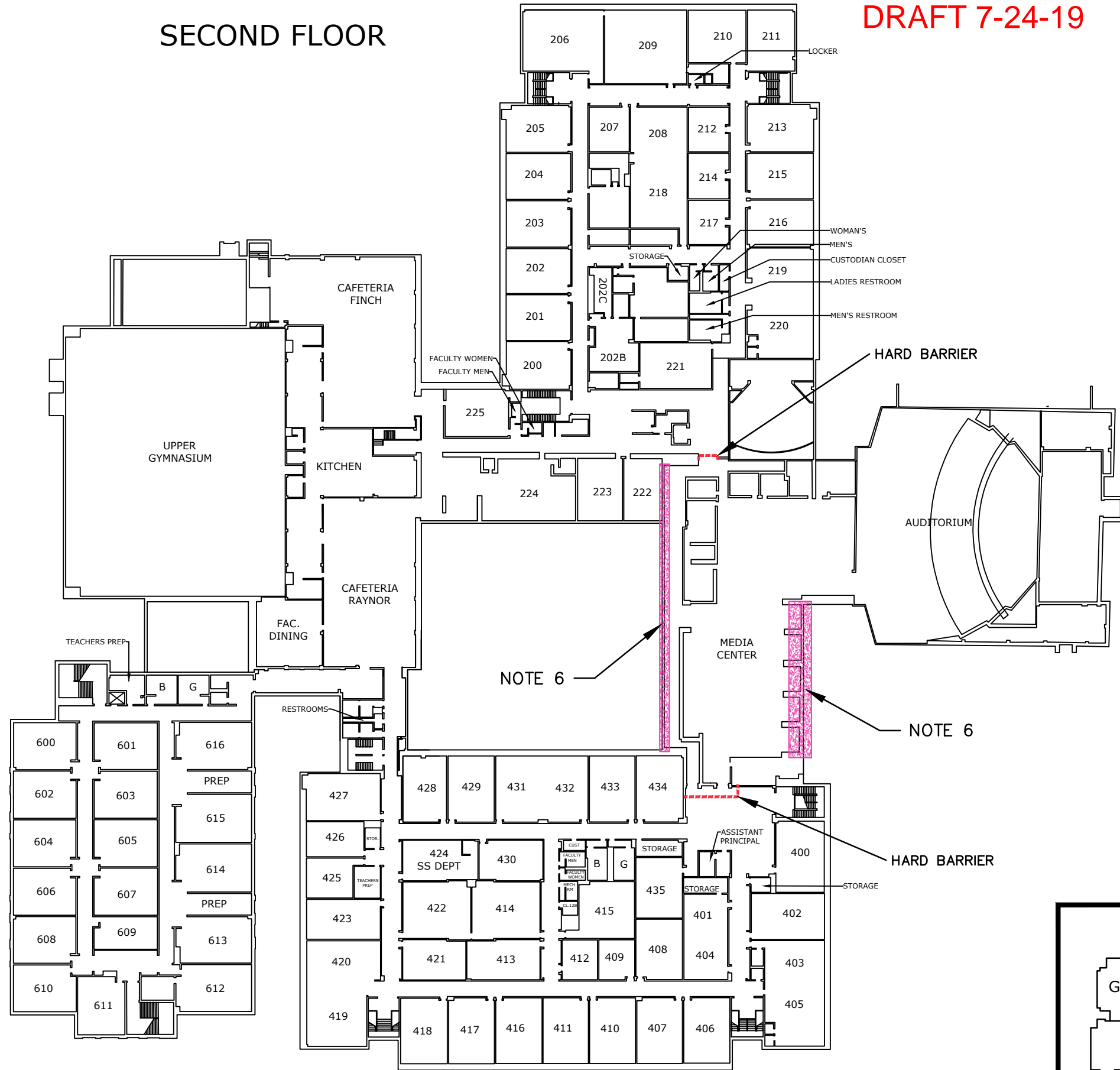
LEGEND



NOTE-06 -
 REMOVE DRYWALL/ASBESTOS-CONTAINING JOINT COMPOUND SOFFIT
 CLEAN AND DISINFECT AREA INCLUDING HVAC RETURN VENTS
 CONDUCT WORK WITHIN NEGATIVE PRESSURE TWO LAYER CONTAINMENT
 WITH CONTIGUOUS THREE STAGE WORKER DECONTAMINATION UNIT AND
 TWO STAGE WASTE LOAD OUT DECONTAMINATION UNIT



HARD BARRIER



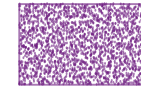
WESTHILL SCHOOL STAMFORD, CONNECTICUT	
SUMMER 2019 WORK SECOND FLOOR	
DATE: 7/24/2019	Tighe & Bond Engineers Environmental Specialists
NOT TO SCALE	
FIGURE: 3.3	

Jul 24, 2019 9:14am Plotted By: TAdomeit Tighe & Bond, Inc. J:\S\2087 Stamford\033 Mold Remediation Consulting\Sites\Westhill\Drawings\CAD\Westhill School Mold Remediation.DWG

Jul 24, 2019 7:43am Plotted By: IAdomeit
Tighe & Bond, Inc. J:\S\S2087_Stamford\033 Mold Remediation Consulting\Sites\Westhill\Drawings\CAD\Westhill School Mold Remediation.DWG

DRAFT 7-24-19

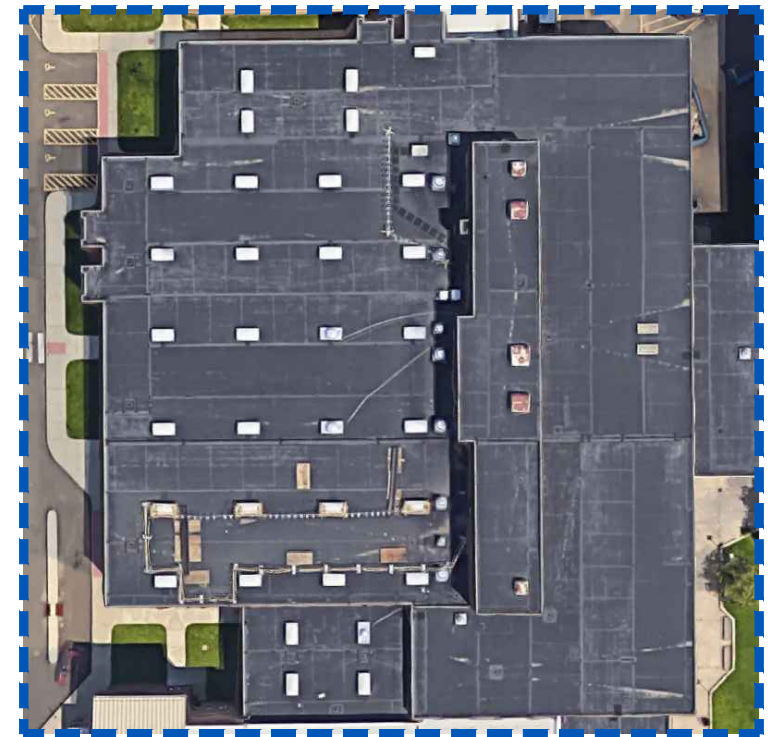
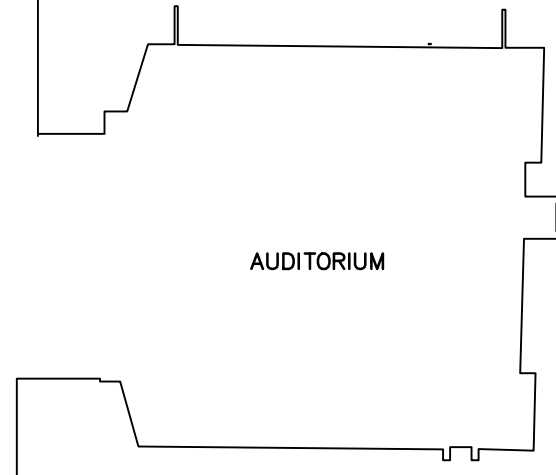
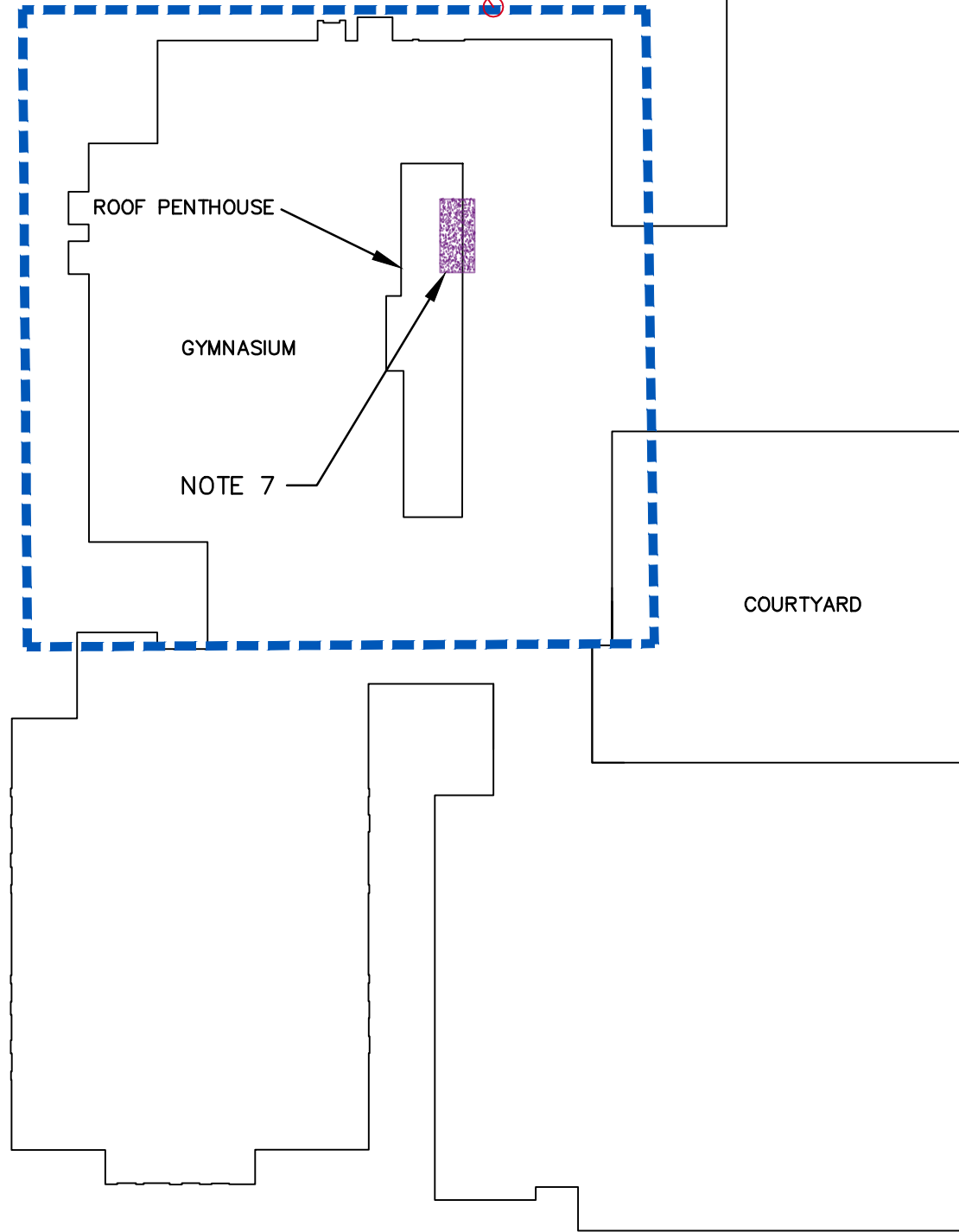
LEGEND



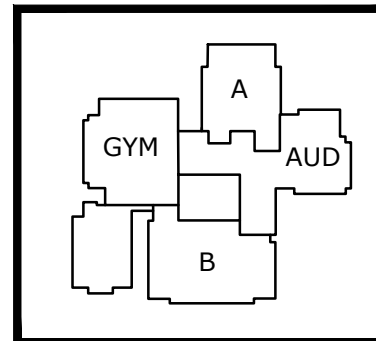
NOTE-07 -
REMOVE TAR PAPER / FELT BEHIND FACADE AROUND LOUVER
CONDUCT WORK WITHIN ONE LAYER DROP CLOTH REGULATED WORK
AREA DEMARCATED BY CAUTION TAPE AT THE BOUNDARY WITH CRITICAL
BARRIERS AND REMOTE DECONTAMINATION UNIT

ROOF

SEE SATELLITE
OVERHEAD



SATELLITE OVERHEAD VIEW



WESTHILL SCHOOL STAMFORD, CONNECTICUT	
SUMMER 2019 WORK ROOF	
DATE: 7/24/2019	Tighe&Bond Engineers Environmental Specialists
NOT TO SCALE	
FIGURE: 3.4	