

PLANTING NOTES:

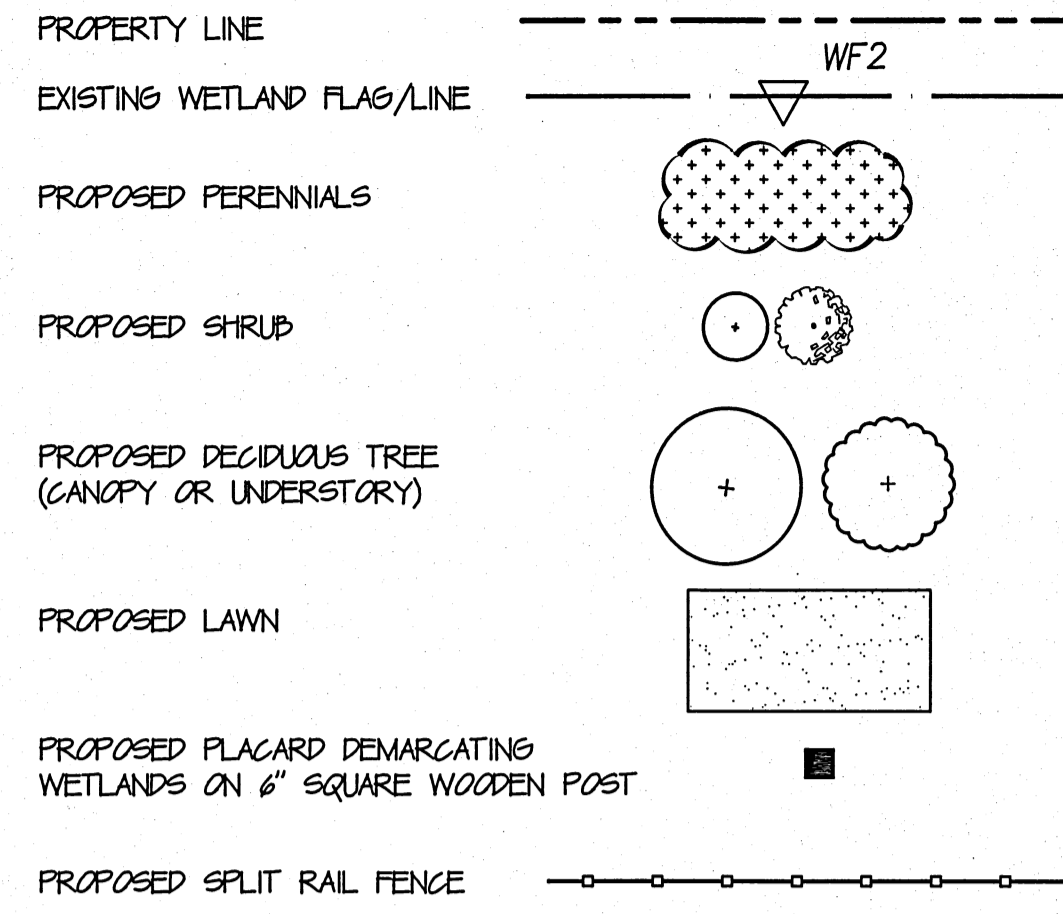
- CONTACT CALL BEFORE YOU DIG AT 800-922-4495 TO HAVE UNDERGROUND UTILITY LINES MARKED PRIOR TO START OF ANY EXCAVATION WORK.
- PAGE MAP INFORMATION WAS TAKEN FROM "SITE DEVELOPMENT AND GRADING PLAN" PREPARED BY REDNISS & MEAD, STAMFORD, CT DATED MARCH 12, 2021, ADDITIONAL INFORMATION (TREES) WERE ADDED FROM FIELD MEASUREMENTS TAKEN BY TRACY CHALIFOUX LLC AND LOCATIONS ARE APPROXIMATE.
- EXACT LOCATION OF PLANTINGS, SPECIES TYPES AND QUANTITIES MAY VARY FROM THIS PLAN BASED ON SITE PLAN REVISIONS AND/OR ACTUAL FIELD CONDITIONS.
- PLANT SPECIES SUBSTITUTIONS MAY BE MADE WITH THE APPROVAL OF THE PROJECT LANDSCAPE ARCHITECT PRIOR TO PLANTING. SUBSTITUTED PLANTS SHALL BE AT AN EQUAL OR GREATER SIZE AS NOTED USING A SIMILAR TYPE PLANT.
- ALL PLANTING METHODS SHALL BE IN ACCORDANCE WITH THE "AMERICAN STANDARDS FOR NURSERY STOCK" LATEST EDITION, AS PUBLISHED BY THE AMERICAN NURSERY AND LANDSCAPE ASSOCIATION.
- IN THE EVENT OF A DISCREPANCY BETWEEN THE QUANTITIES OF PLANTS IN THE PLANT LIST AND THE ACTUAL QUANTITIES SHOWN ON THE PLAN THE PLAN SHALL GOVERN.
- ALL LAWN AREAS ARE TO RECEIVE A MINIMUM OF 6 INCH DEPTH OF CLEAN SCREENED TOPSOIL.
- ALL PLANTING BEDS ARE TO HAVE 24 INCH DEPTH OF PLANTING MIX.
- PROVIDE 3" OF SHREDDED BARK MULCH IN PLANT BEDS.
- ANY PLANTINGS SUSCEPTIBLE TO DEER BROWSING SHALL BE SPRAYED WITH ORGANIC DEER REPELLENT AS NEEDED.
- AN IRRIGATION SYSTEM SHALL BE PROVIDED FOR ALL NEW AREAS OF PLANTINGS AND LAWN.

PLANT LIST (Upland)-Young Israel

QUANTITY	SYMBOL	BOTANICAL NAME	COMMON NAME	SIZE	NOTES	HEIGHT AT MATURITY	SPACING
1	CF	Cornus kousa	Kousa Dogwood	2"-2 1/2" cal.	Full, Heavy, Specimen, B&B	20'-25'	
4	GT	Gleditsia triacanthos var. inermis 'Shademaster'	Shademaster Thornless Honeylocust	2"-2 1/2" cal.	Full, Heavy, Specimen, B&B, Matching	40'-50'	
1	ST	Stewartia pseudocamellia	Japanese Stewartia	2"-2 1/2" cal.	Full, Heavy, Specimen, B&B	20'-30'	
11	TS	Thuja standishii	Green Giant Arborvitae	7'-8' ht.	Full, Heavy, Specimen, B&B, Matching	40'-50'	
SHRUBS							
5	BUD	Buddleia 'Lo & Behold' Blue Chip Jr.	Blue Chip Jr. Butterfly Bush	18" ht.	Full, Heavy, Container, Matching		
1	CP	Chamaecyparis 'Golden Mop's	Golden Mops Falsecypress	2'-2 1/2' ht.	Full, Heavy, Container, Matching		
3	DEU	Deutzia gracilis 'Nikko'	Spreading Deutzia	18" ht.	Full, Heavy, Container		
3	HYE	Hydrangea macrophylla 'Endless Summer'	Endless Summer Hydrangea	3'-3 1/2' ht.	Full, Heavy, Container		
10	HYQ	Hydrangea quercifolia 'Munchkin'	Munchkin Oakleaf Hydrangea	3'-3 1/2' ht.	Full, Heavy, Container		
16	ICC	Ilex crenata 'Compacta'	Compact Japanese Holly	2'-2 1/2' ht.	Full, Heavy, Container		
1	ICS	Ilex crenata 'Schwoebel Excelsa'	Upright Japanese Holly	3 1/2'-4' ht.	Full, Heavy, Container, Matching		
1	SPA	Spiraea 'Anthony Waterer'	Anthony Waterer Spirea	2'-2 1/2' ht.	Full, Heavy, Container		
3	SPL	Spiraea 'Little Princess'	Little Princess Spirea	2'-2 1/2' ht.	Full, Heavy, Container		
12	SPG	Spiraea 'Goldmound'	Goldmound Spirea	2'-2 1/2' ht.	Full, Heavy, Container		
1	VP	Viburnum plicatum 'Popcorn'	Popcorn Viburnum	4'-4 1/2' ht.	Full, Heavy, Container		
PERENNIALS, GROUNDCOVERS, VINES AND GRASSES							
11	HAK	Hakonechloa spp	Hakone Grass	1 Gallon	Container	15" O.C.	
5	HOS	Hosta 'Fire and Ice'	Fire and Ice Hosta	1 Gallon	Container	24" O.C.	
107	LIR	Liriope muscari 'Big Blue'	Big Blue Lilyturf	1 Gallon	Container	12" O.C.	
11	NEP	Nepeta 'Walker's Low'	Walker's Low Catmint	1 Gallon	Container	24" O.C.	
66	PV	Panicum virgatum 'Heavy Metal'	Heavy Metal Switchgrass	1 Gallon	Container	30" O.C.	
14	PEN	Pennisetum 'Little Bunny'	Little Bunny Dwarf Fountain Grass	1 Gallon	Container	24" O.C.	
75	PA	Polystichum acrostichoides	Christmas Fern	1 Gallon	Container	24" O.C.	
7	RUD	Rudbeckia 'American Goldrush'	American Goldrush Black-eyed Susan	1 Gallon	Container	18" O.C.	
21	SAL	Salvia 'May Night'	May Night Salvia	1 Gallon	Container	18" O.C.	

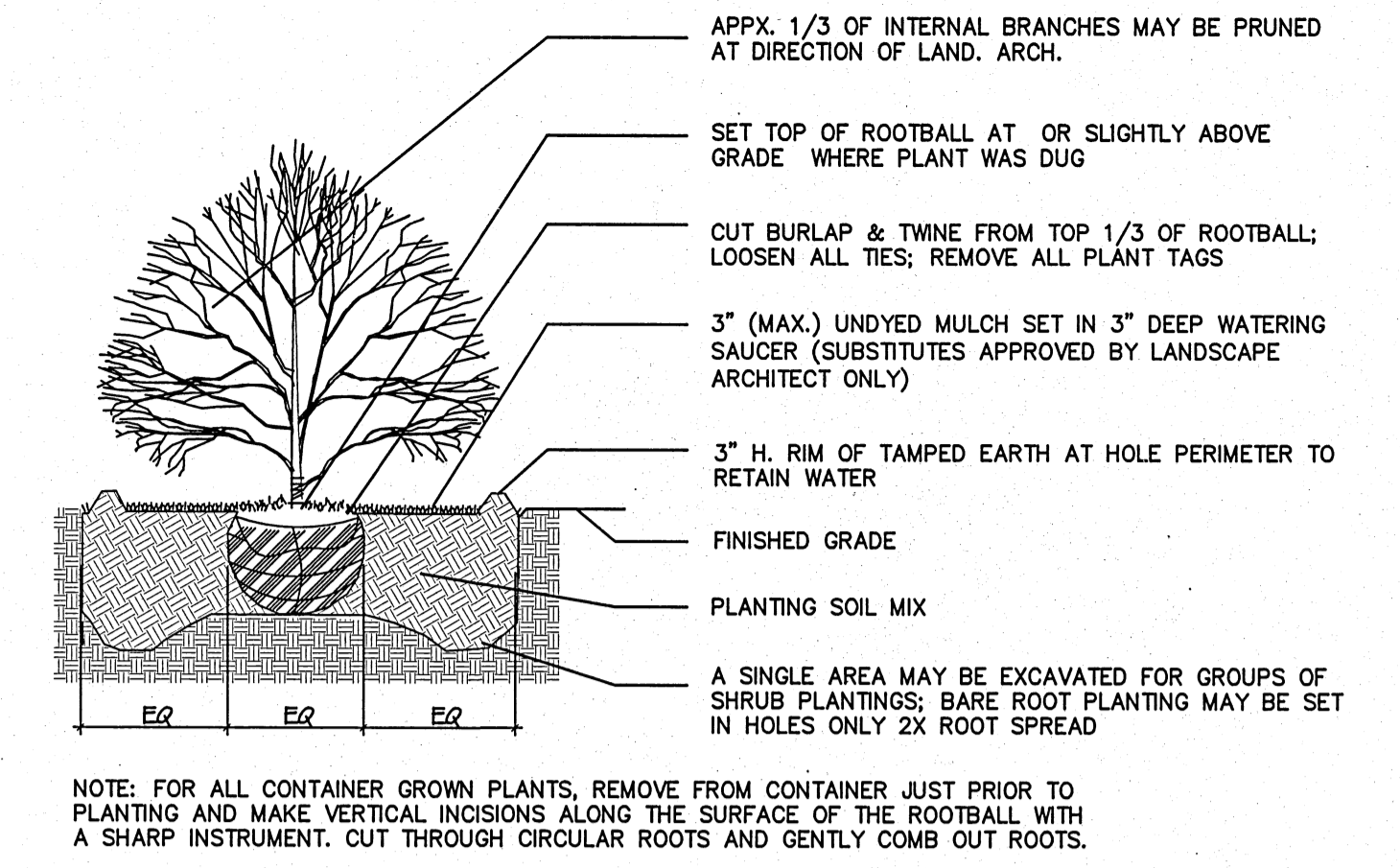
Note: Provide 3" of shredded bark mulch in all planting beds.

PLANTING LEGEND

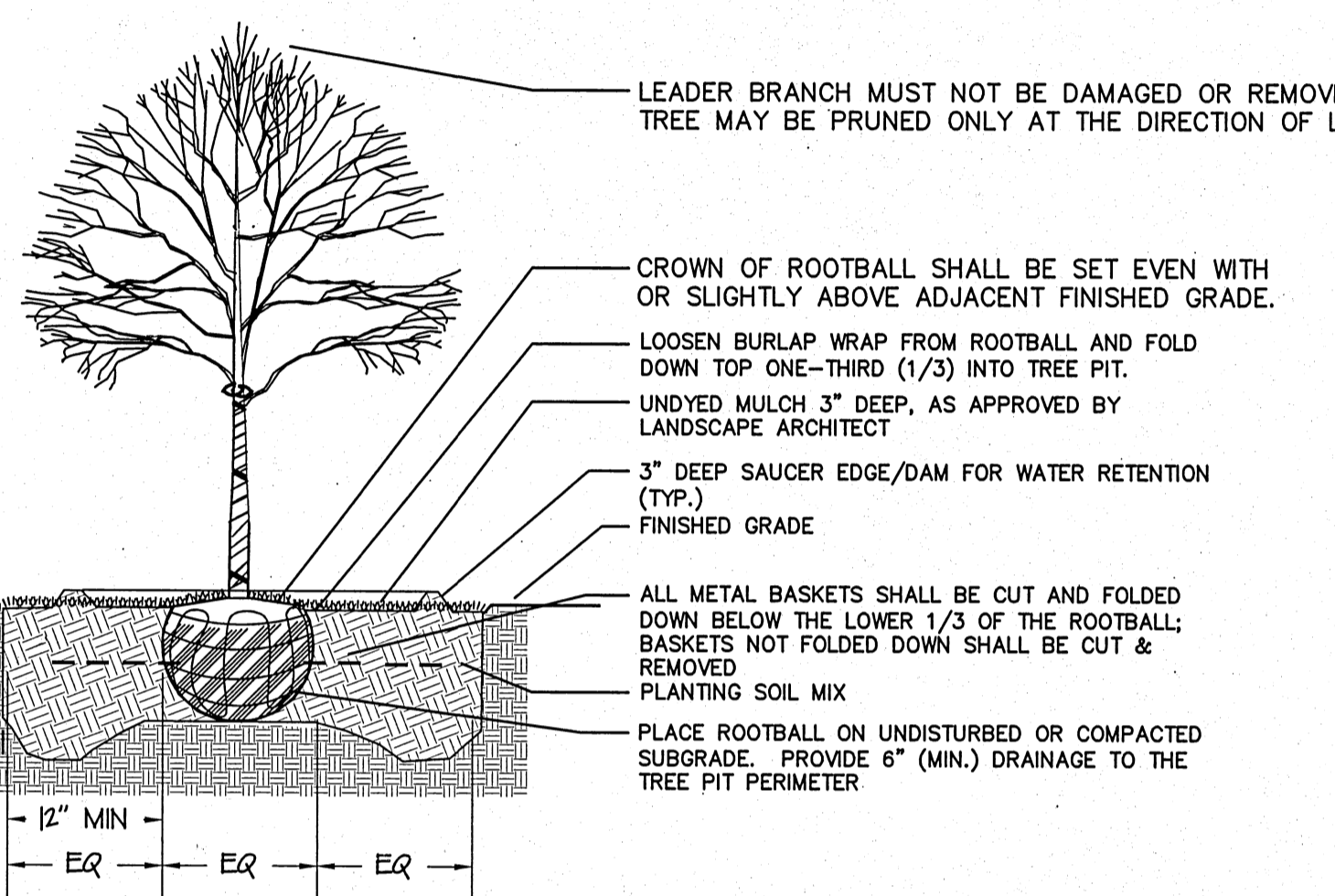


REFERENCE NOTES:

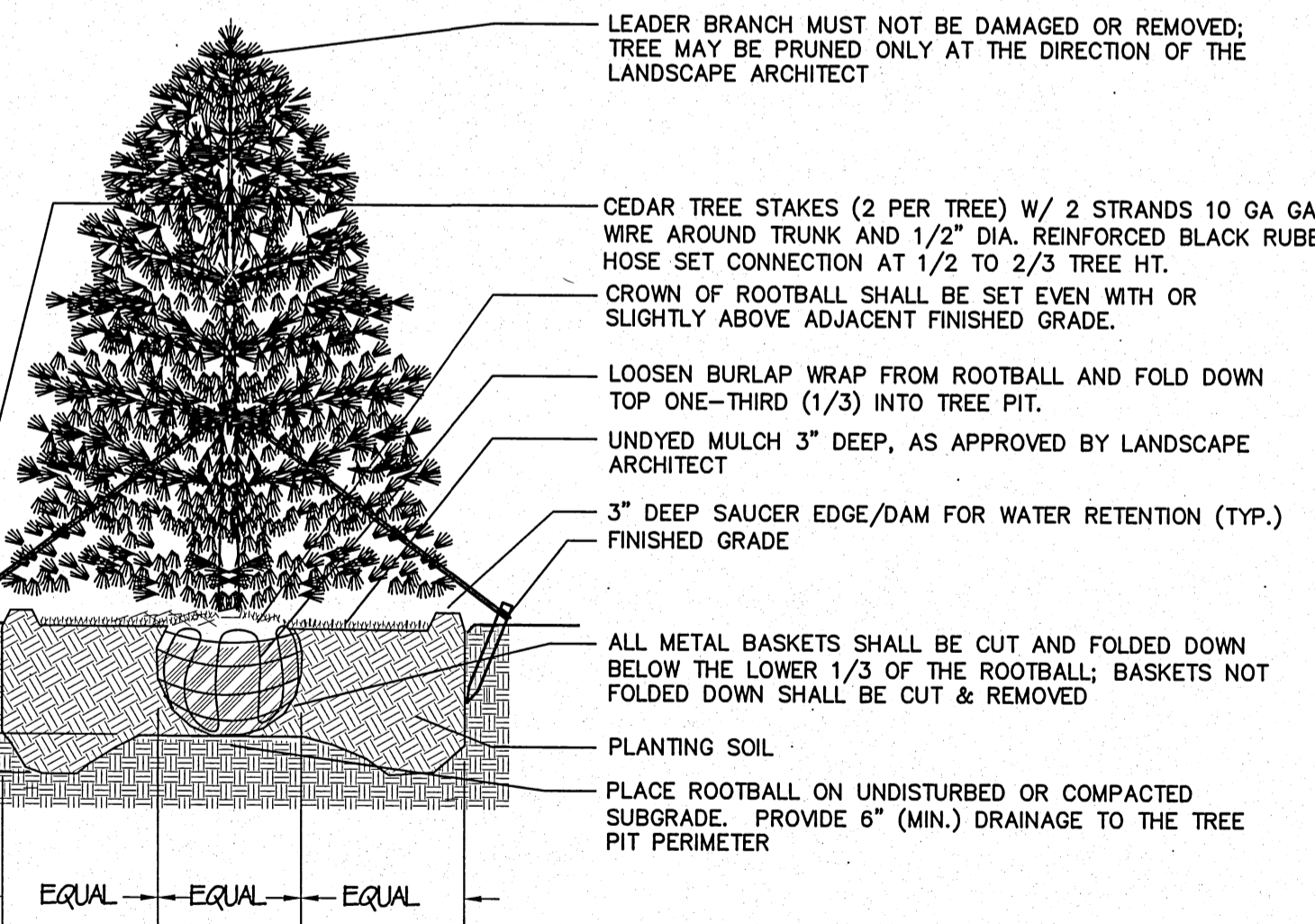
FOR ENGINEERING AND SITE PLANNING REFER TO PLANS PREPARED BY REDNISS & MEAD. FOR ARCHITECTURE REFER TO PLANS PREPARED BY DUO DICKINSON ARCHITECT.



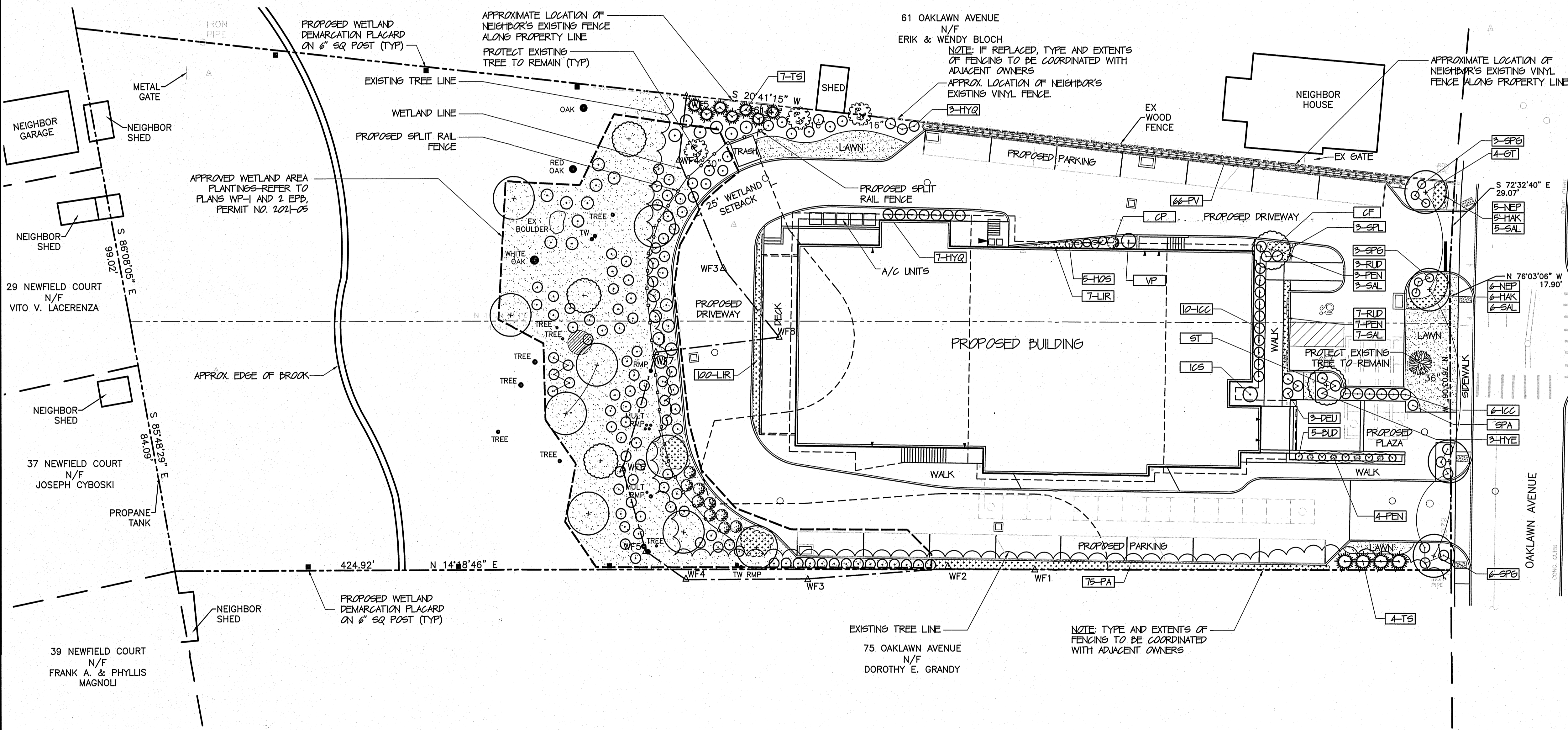
1 SHRUB PLANTING DETAIL
NOT TO SCALE



2 DECIDUOUS TREE PLANTING DETAIL
NOT TO SCALE



3 CONIFEROUS TREE PLANTING DETAIL
NOT TO SCALE



<p>Revised landscaping for latest site plan Revisions: 07.19.22</p>	<p>Tracy Chalifoux LLC Landscape Architect 7 King Street, Danbury, CT 06811 Office: 845-364-1360 Email: tchalfoux@gmail.com</p>	<p>Seal STATE OF CONNECTICUT TRACY CHALIFOUX LANDSCAPE ARCHITECT No. 1185</p>	<p>Project Title LANDSCAPE PLAN PREPARED FOR: YOUNG ISRAEL</p>	<p>Graphic Scale and North Arrow 0 20' 40' Date: August 12, 2021</p>	<p>Drawing Title LANDSCAPE PLAN</p>	<p>Drawing No. L-1</p>
<p>Location 63 & 69 OAKLAWN AVENUE STAMFORD, CONNECTICUT</p>	<p>Scale 1" = 20'-0"</p>	<p>Checked SD</p>	<p>Drawn TLC</p>	<p>SHEET 1 OF 1</p>		