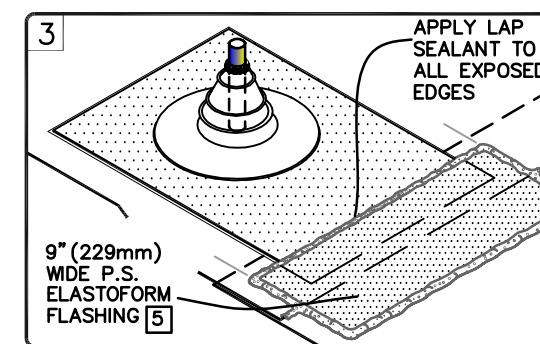
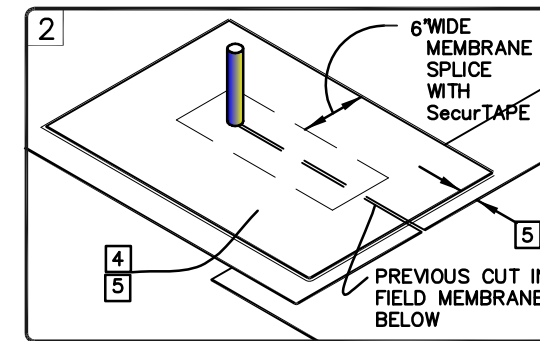
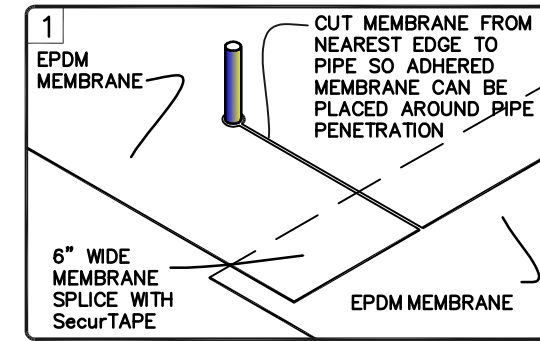


**1 ROOF DRAIN DETAIL**  
SCALE: N.T.S.

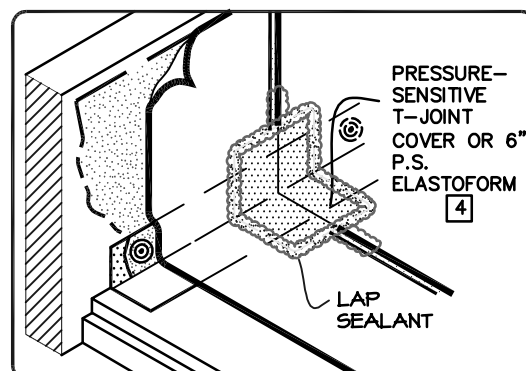
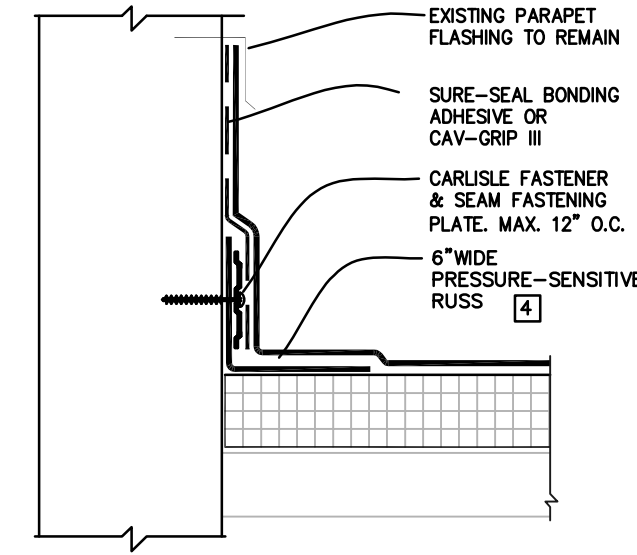
- NOTES:
- ROOF DRAIN SIZE AND NUMBER OF DRAINS SHALL BE IN ACCORDANCE WITH THE LOCAL CODES.
  - ALL BOLTS OR CLAMPS MUST BE IN PLACE TO PROVIDE CONSTANT COMPRESSION ON WATER CUT-OFF MASTIC.
  - THE HOLE IN THE MEMBRANE SHALL EXCEED THE DIAMETER OF THE DRAIN PIPE BUT SHALL BE NO LESS THAN 1/2" (13mm) FROM THE ATTACHMENT POINTS OF THE DRAIN CLAMPING RING.
  - REMOVE EXISTING LEAD, FLASHING MATERIAL & ENSURE THE DRAIN RING IS COMPLETELY CLEAN DOWN TO BARE METAL.
  - FIELD SPICES MUST BE LOCATED AT LEAST 6" (152mm) OUTSIDE THE DRAIN SUMP.
  - INSULATION TAPER SHALL NOT BE GREATER THAN 6" (152mm) IN 12" (305mm) HORIZONTAL.



**2 PIPE SEAL DETAIL**  
SCALE: N.T.S.

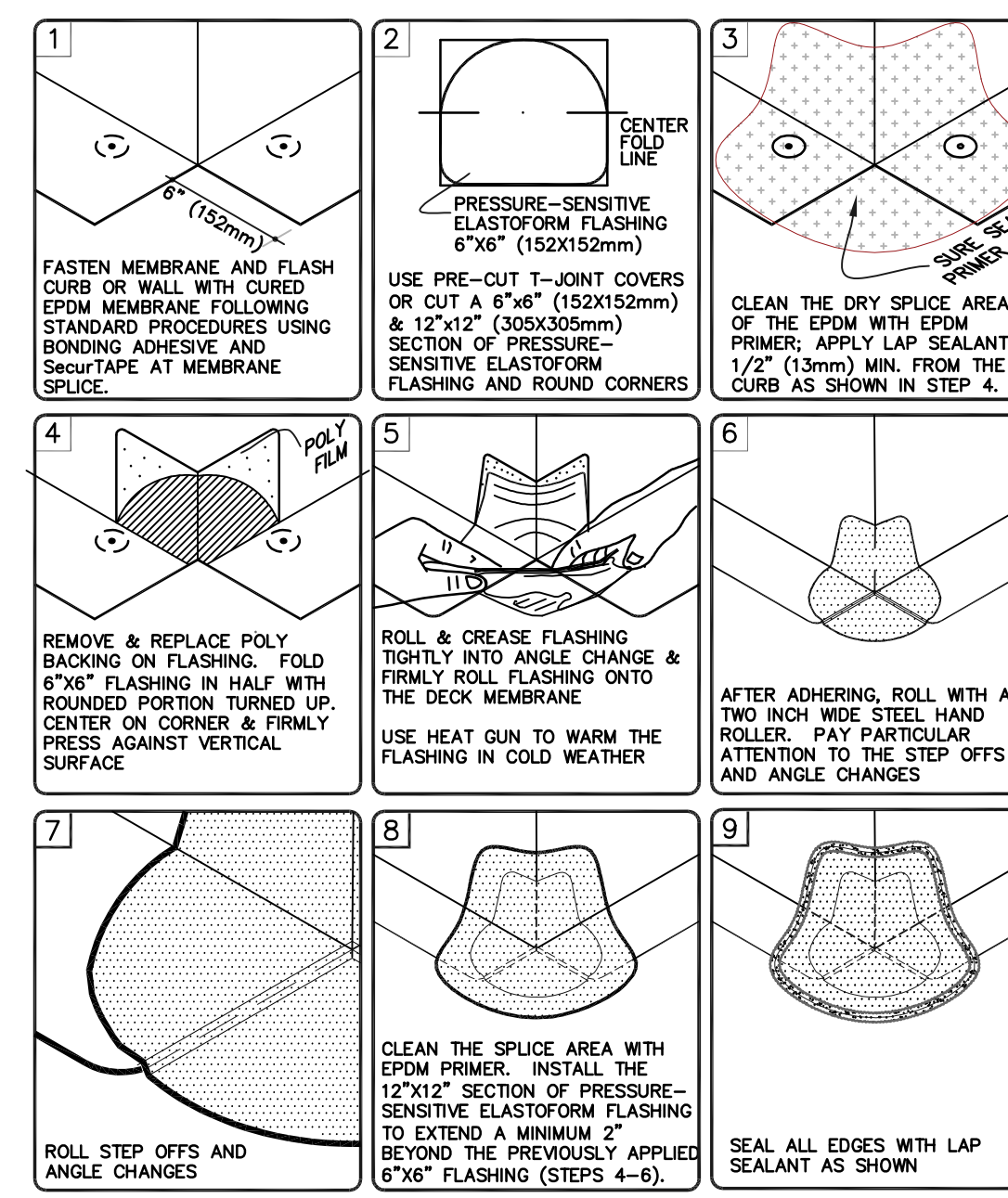
- NOTES:
- REMOVE ALL LEAD AND OTHER FLASHING BEFORE INSTALLING PRESSURE-SENSITIVE PIPE SEAL.
  - PIPE SEAL MUST HAVE INTACT RIB AT TOP EDGE, REGARDLESS OF PIPE DIAMETER.
  - DECK FLANGES OF THE MOLDED PIPE SEAL SHALL NOT BE OVERLAPPED, CUT OR APPLIED OVER ANY ANGLE CHANGE.
  - 60-MIL (1.52mm) EPDM OR 20" (508mm) PRESSURE-SENSITIVE CURED EPDM FLASHING.
  - AT THE CUT IN THE FIELD MEMBRANE, FLASHING OVERLAY MUST EXTEND 3" (76mm) BEYOND THE MOLDED PIPE FLASHING FLANGE ON 3 SIDES AND WITHIN 1" (25mm) OF THE EDGE OF THE FIELD MEMBRANE, AS SHOWN.
  - CENTER 9" (229mm) WIDE PRESSURE-SENSITIVE ELASTOFORM FLASHING OVER THE MEMBRANE SPICE EDGE AND EXTEND 3" (76mm) BEYOND THE MEMBRANE OVERLAY, AS SHOWN.
  - SEAL ALL EDGES WITH CONTINUOUS LAP SEALANT.

FASTENERS AND PLATES ARE REQUIRED AT 6" O.C. FOR ADHERED SYSTEMS WITH WARRANTY WIND SPEED COVERAGE GREATER THAN 90 MPH AND FOR ALL PROJECTS WITH WARRANTIES GREATER THAN 20 YEARS.



**3 PARAPET / CURB DETAIL**  
SCALE: N.T.S.

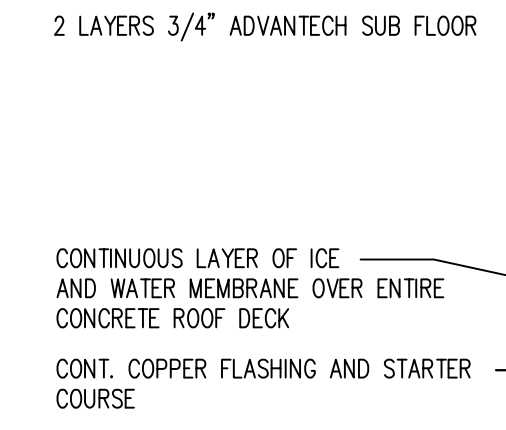
1. ALL VERTICAL SPICES AT THE BASE OF A WALL AND SPICE INTERSECTIONS MUST BE OVERLAPED WITH TWO LAYERS OF PRESSURE-SENSITIVE ELASTOFORM FLASHING. THE BOTTOM LAYER SHALL BE 6" (152mm) WIDE COVERED WITH A 12" (305mm) WIDE PRESSURE-SENSITIVE ELASTOFORM FLASHING PIECE. BOTH LAYERS SHALL BE CENTERED AND FINAL LAYER SEALED WITH CONTINUOUS LAP SEALANT.



**4 OUTSIDE CORNER FLASHING DETAIL**  
SCALE: N.T.S.

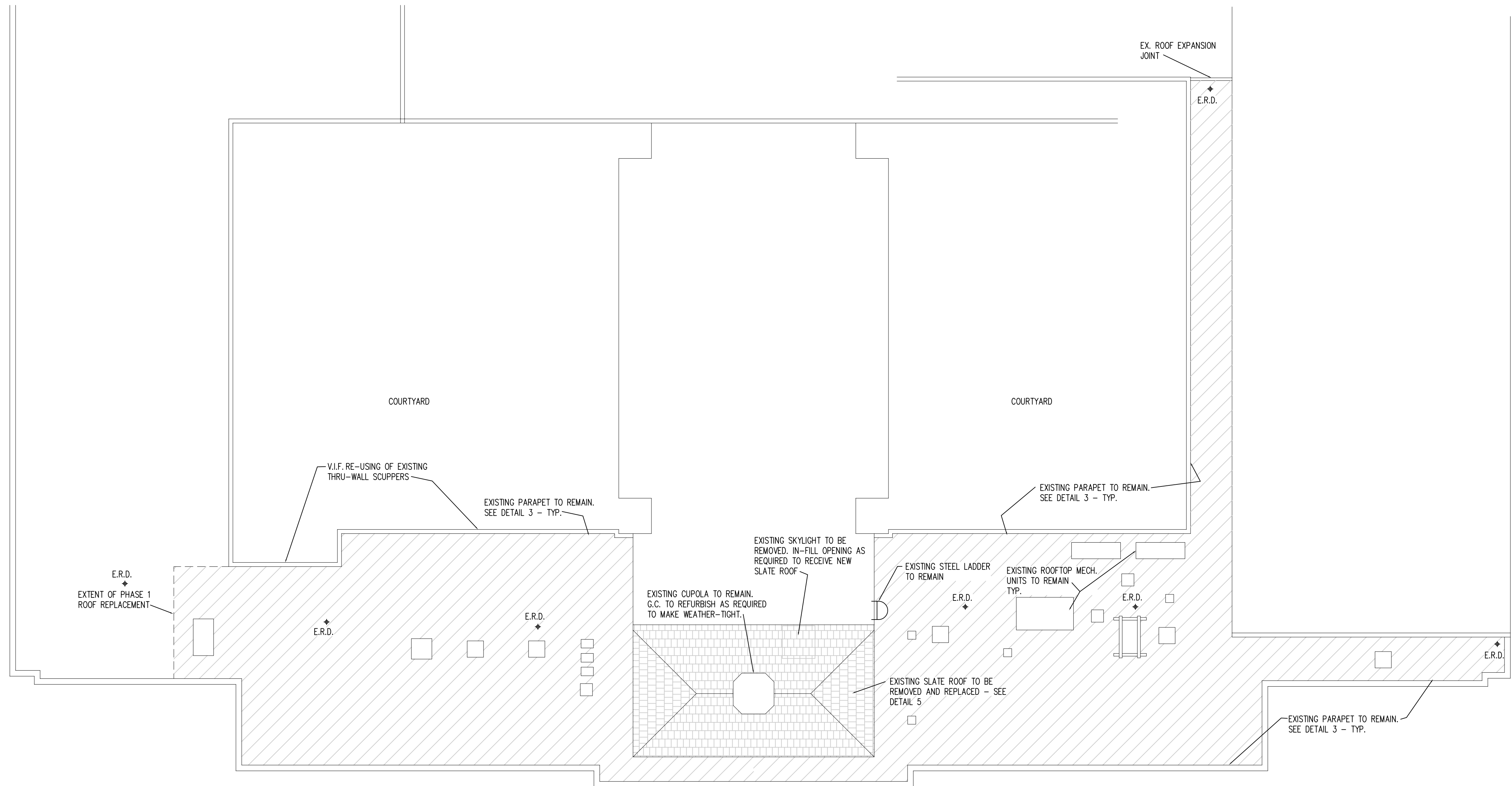
- NOTES:
- EXPOSURE OF SLATES SHALL BE DETERMINED AS FOLLOWS:  
SLATE LENGTH - 3'+2"
  - VERTICAL JOINTS IN SLATE COURSES SHALL BE STAGGERED BY MINIMUM 3"
  - COPPER NAILS FOR SLATES SHALL BE 30 NAILS FOR SLATES UP TO 18" LONG, OR 40 NAILS FOR SLATES LONGER THAN 18". NAIL LENGTH SHALL BE DETERMINED AS FOLLOWS: SLATE THICKNESS X 2+1"
  - FASTEN 1ST LAYER OF ADVENTECH SUB FLOOR WITH 3/16" X 2" WHITE ULTRASHIELD BEVELED HEAD TAPCONS @ 16" O.C. HORIZONTALLY AND 12" O.C. VERTICALLY. 2ND LAYER OF ADVENTECH SHALL BE ADHERED WITH CONTINUOUS BEADS OF ADVENTECH ADHESIVE @ 16" O.C. & 3/16" X 2" WHITE ULTRASHIELD BEVELED HEAD TAPCONS @ 24" O.C. STAGGER JOINTS OF ADVENTECH PANELS.

- NEW SLATE ROOF SHINGLES SECURED WITH COPPER NAILS
- 2 LAYERS 30# FELT CONTINUOUS UNDER SLATES
  - 36" STRIP OF ICE AND WATER MEMBRANE ALONG EAVES, HIPS & RIDGE. EXTEND MINIMUM 24" INTO HEATED PERIMETER ALONG EAVES



**5 SLATE ROOF DETAIL**  
SCALE: 1-1/2" = 1'-0"

- NEW ROOFING SYSTEM AS FOLLOWS:
- EXISTING ROOFING TO BE REMOVED DOWN TO EXISTING ROOF DECK.
  - 'CARLISLE' VAPAIR SEAL 725TR SELF-ADHERED VAPOR BARRIER, INSTALLED WITH 'CARLISLE' CAV GRIP III PRIMER.
  - 2.6" 'CARLISLE' SECURSHIELD COATED GLASS FACER POLYISO INSULATION, 20 PSI LOOSE LAID.
  - 2.6" 'CARLISLE' SECURSHIELD COATED GLASS FACER POLYISO INSULATION, 20 PSI, MECHANICALLY MFASTENED WITH 'CARLISLE' CD-10 OF 'CARLISLE' HD 14-10 FASTENERS AND 'CARLISLE' SURE SEAL INSULATION PLATES AT RATE OF (16) FASTENERS PER 4'x8' BOARD.
  - .090 'CARLISLE SURE SEAL' NON-REINFORCED EPDM ROOF MEMBRANE WITH 6" FACTORY APPLIED SEAM TAPE, BLACK, FULLY ADHERED WITH 'CARLISLE CAV GRIP III BONDING ADHESIVE APPLIED TO BOTH MATING SURFACES.
  - PROVIDE 'CARLISLE' WALK-WAY PADS AROUND ALL EXISTING MECHANICAL UNITS.
  - EXISTING ROOF DRAINS TO REMAIN. G.C. TO INSPECT EACH ROOF DRAIN AND REPLACE IF REQUIRED.



**1 PARTIAL ROOF PLAN**  
SCALE: 1/8" = 1'-0"

