

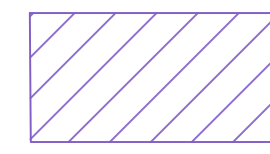
PHASE ONE WORK PLAN

PHASE 1
 SPOT REMOVAL OF CEILING PLASTER AROUND THE SPRINKLER ANCHOR.
 CLEAR USING TRANSMISSION ELECTRON MICROSCOPY (TEM) RE-OCCUPANCY AIR SAMPLING.
 PLUMBER WILL THEN BE ALLOWED ACCESS TO CLEARED WORK AREA IN ORDER TO REANCHOR THE SPRINKLER SYSTEM TO THE NEWLY EXPOSED SUBSTRATE.

PHASE TWO WORK PLAN

PHASE 2
 ABATEMENT OF ALL REMAINING MATERIALS.
 CLEAR USING TRANSMISSION ELECTRON MICROSCOPY (TEM) RE-OCCUPANCY AIR SAMPLING

LEGEND



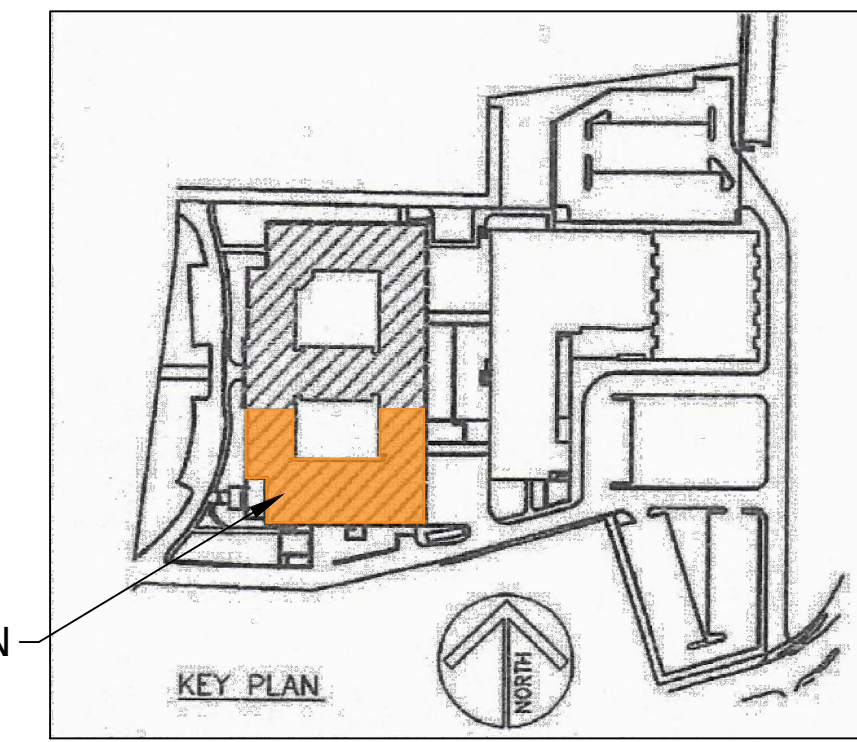
NOTE-01-
 REMOVE ASBESTOS CEILING PLASTER ABOVE NON-ASBESTOS DROP CEILING
 CONDUCT WORK WITHIN NEGATIVE PRESSURE CONTAINMENT WITH CONTIGUOUS THREE STAGE WORKER DECONTAMINATION UNIT AND TWO STAGE WASTE LOAD OUT DECONTAMINATION UNIT



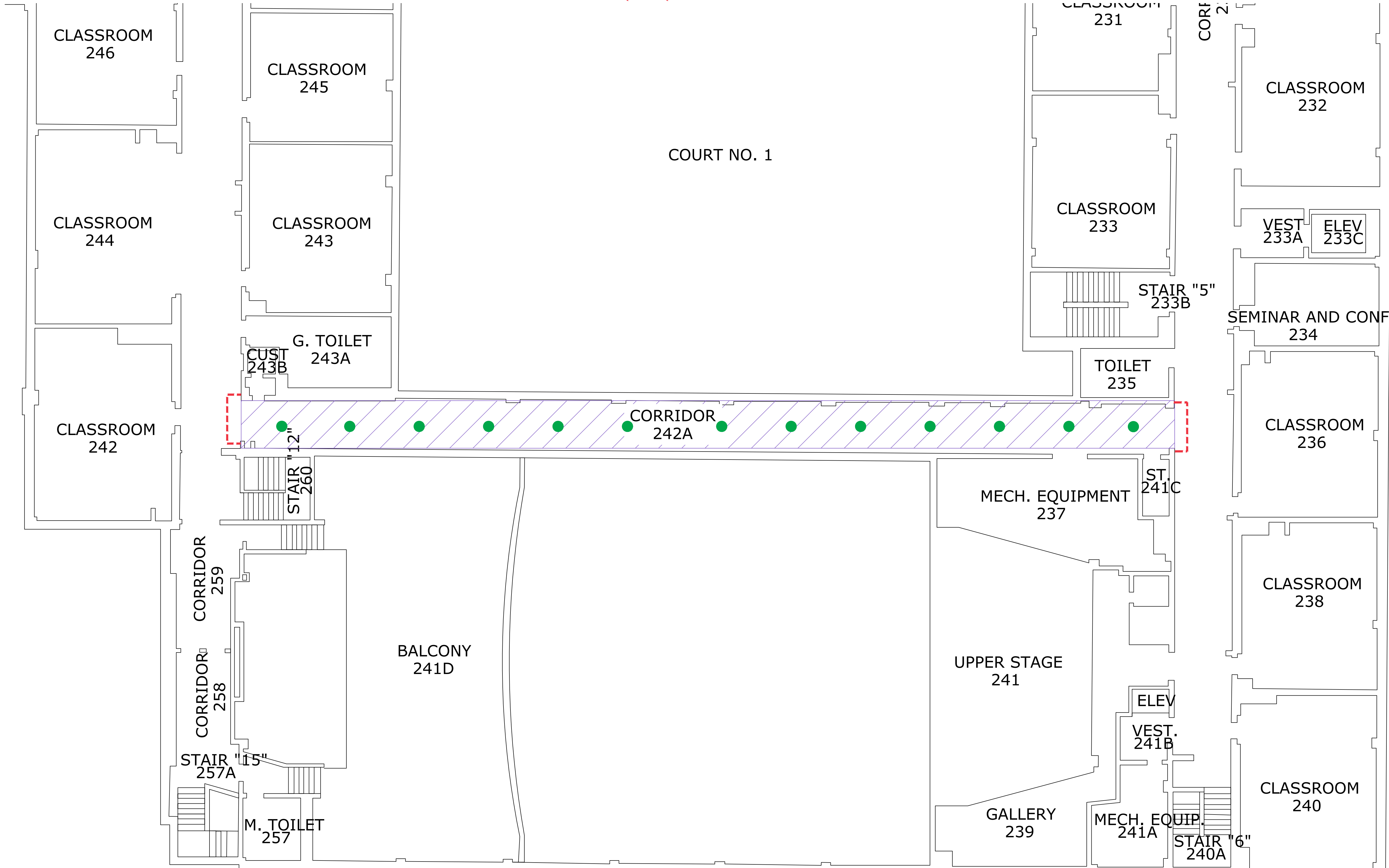
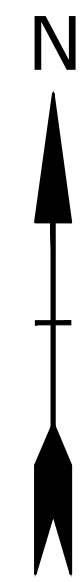
APPROXIMATE SPRINKLER HEAD LOCATION



HARD BARRIER



KEY PLAN
 LEVEL "B" FLOOR PLAN



Stamford High School Mold Remediation Consultation

City of Stamford

55 Strawberry Hill Avenue
 Stamford, CT

MARK	DATE	DESCRIPTION
PROJECT NO:	S2087-033	
DATE:	2/17/2020	
FILE:	Stamford HBMA Sampling and Work Plans.dwg	
DRAWN BY:	IFA	
CHECKED:	MF	
APPROVED:	XX	

**Additional Work Plan
 Level "B" Floor**

SCALE: NOT TO SCALE

FIGURE 1.03