

# WORK PERFORMED AT SCOFIELD MIDDLE SCHOOL

---

Kitchen, office and cafeteria walls were removed due to mold because of the dishwasher leak.

12-26-2018



Interior wall by dishwasher



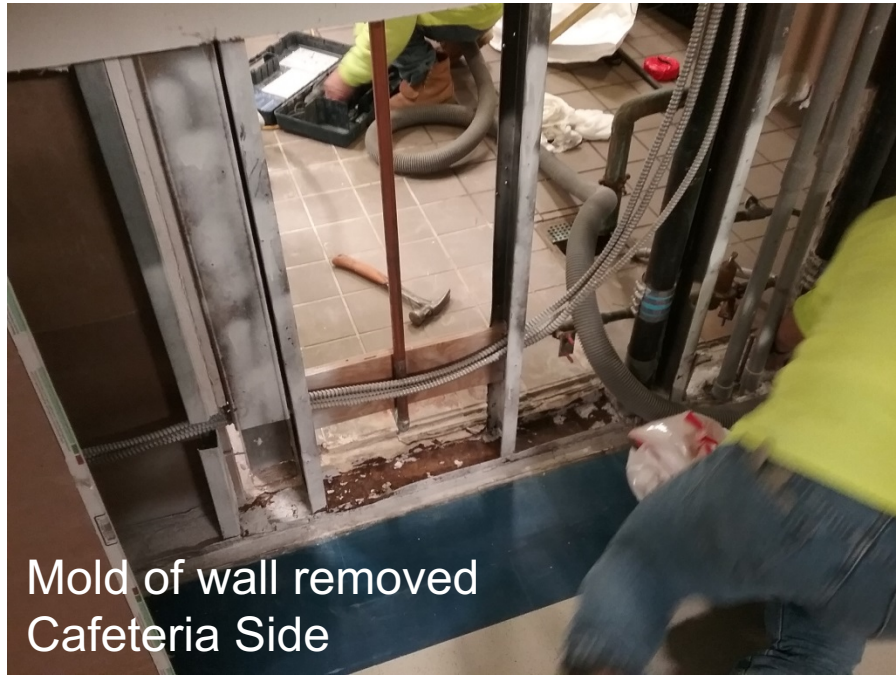
Mold on wall removed



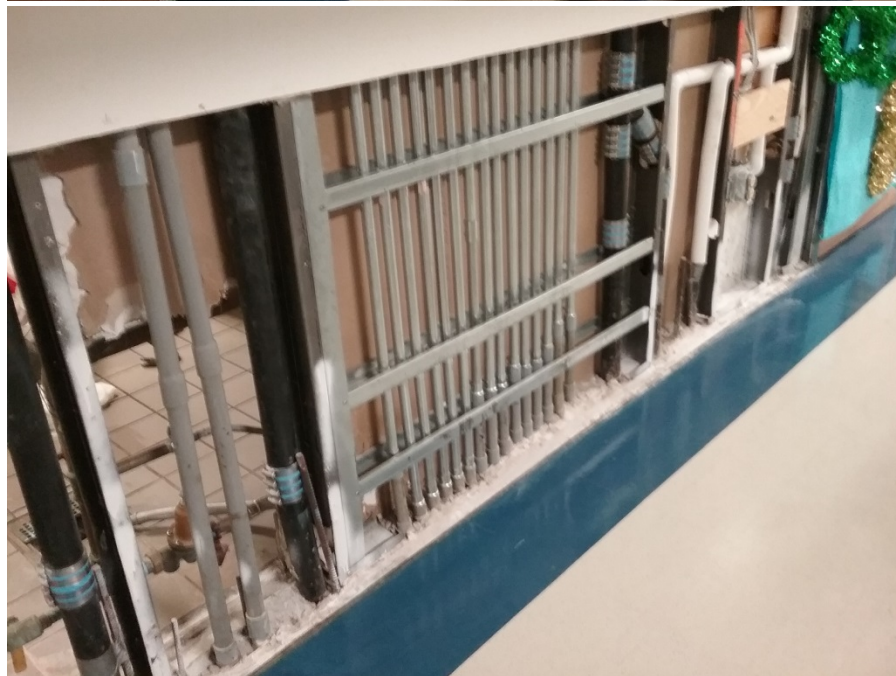
Mold on wall removed  
Office Side



Mold on wall removed  
Kitchen Side



Mold of wall removed  
Cafeteria Side



Mold on wall removed  
Cafeteria Side



Mold on wall removed  
Cafeteria Side



Mold on wall removed - Kitchen Side

