

LIMIT OF CONSERVATION EASEMENT AREA OFF-SITE TAKEN FROM MAP #12204 S.L.R.

INSPECTED DRAINAGE



INSPECTED and cleaned from 10/26 - 11/8/18

LIMIT OF WETLANDS OFF-SITE TAKEN FROM MAP # 12204 S.L.R.

25' WETLANDS SETBACK LINE

ACCESS ROAD (INV. = 34.82)

8" PVC 0.005 FPF (MIN) ROOF DRAIN

(INV. = 35.71) 8" PVC 0.01 FPF (MIN) ROOF DRAIN

(INV. = 34.38) CLEANOUT

CB#21

CB#20

MH#13B

MH#14

ROOF DRAIN 10" PVC 0.005 FPF (MIN)

8" PVC 0.005 FPF (MIN) ROOF DRAIN

8" PVC 0.01 FPF (MIN) ROOF DRAIN

8" FIRE LOOP W

PLAYSCAPE

8" SANITARY SEWER

PAVED PLAY

8" PVC 0.005 FPF (MIN) ROOF DRAIN

REPLACE CATCH BASIN GRATE WITH WATER TIGHT MANHOLE FRAME AND COVER TO BE BOLTED DOWN

COURTYARD

ROOF DRAIN IN COURTYARD SHALL BE 8" PVC 0.005 FPF MIN SLOPE

REPLACE CATCH BASIN GRATE WITH WATER TIGHT MANHOLE FRAME AND COVER TO BE BOLTED DOWN

MH#12 TO BE SEALED & WATERTIGHT

MH#1

CB#18

EXISTING BOX CULVERT TO REMAIN

MH#11 TO BE SEALED & WATERTIGHT

AD#23

AD#25

MH#13

SAN MH#102

MH#13A

CB#19

REMOVE EXISTING SANITARY & STORM STRUCTURES & PIPES

MH#9

PLAYSCAPE

8" PVC 0.02 FPF (MIN) ROOF DRAIN

EXISTING BOX CULVERT TO REMAIN

(INV. = 34.77)

INV. = 36.05

EXISTING 48" CULVERT TO REMAIN

REMOVE EX. 36" RCP REMOVE MH

OIL TANK

Playground Area

NEW

San MH Rm 37.6 FI Inv 33.3

San MH Rm 39.8 FI Inv 31.2

San MH Rm 38.4 FI Inv 31.8 REMOVE

San MH Rm 39.6 FI Inv 32.2 REMOVE

Storm MH Rm 35.0 FI Inv 31.0

Storm MH Rm 35.5 FI Inv 31.0

Storm MH Rm 38.9 3'x7' S Inv 31.3 48" Inv 21.8 36" N Inv 32.2

Storm MH Rm 27.4 36" FI Inv 32.8

Storm MH Rm 38.2 36" FI Inv 32.8

Storm MH Rm 38.2 36" FI Inv 32.8

LIMIT OF CONSERVATION EASEMENT AREA OFF-SITE TAKEN FROM MAP #12204 S.L.R.

LIMIT OF WETLANDS OFF-SITE TAKEN FROM MAP # 12204 S.L.R.

*Clogged*



OF WETLANDS OFF-SITE TAKEN FROM MAP #12204 S.L.R.

25' WETLANDS SETBACK LINE

ACCESS ROAD

8"PVCP @0.005FPF (MIN) ROOF DRAIN

8"PVCP @0.01FPF(MIN) ROOF DRAIN

10"PVCP @0.01FPF(MIN) CLEANOUT

CB#21

CB#20

MH#13B

MH#14

10"PVCP @0.005FPF (MIN) ROOF DRAIN

8"PVCP @0.005FPF (MIN) ROOF DRAIN

AD#24

MH#15

AD#25

AD#22

AD#23

AD#25

AD#25

AD#25

AD#25

AD#25

AD#25

AD#25

AD#25

AD#25

AD#25

AD#25

AD#25

AD#25

AD#25

AD#25

AD#25

AD#25

PAVED PLAY

COURTYARD

PLAYSCAPE

8" FIRE LOOP

8"PVCP @0.005FPF (MIN) ROOF DRAIN  
REPLACE CATCH BASIN GRATE WITH WATER TIGHT MANHOLE FRAME AND COVER TO BE BOLTED DOWN

ROOF DRAINS IN COURTYARD SHALL BE 8"PVCP @ 0.005 FPF MIN SLOPE  
REPLACE CATCH BASIN GRATE WITH WATER TIGHT MANHOLE FRAME AND COVER TO BE BOLTED DOWN  
RIM=38.60  
1061 4" CIP @ 0.01 EPF

MH#12 TO BE SEALED & WATERTIGHT

REMOVE EXISTING SANITARY & STORM STRUCTURES & PIPES

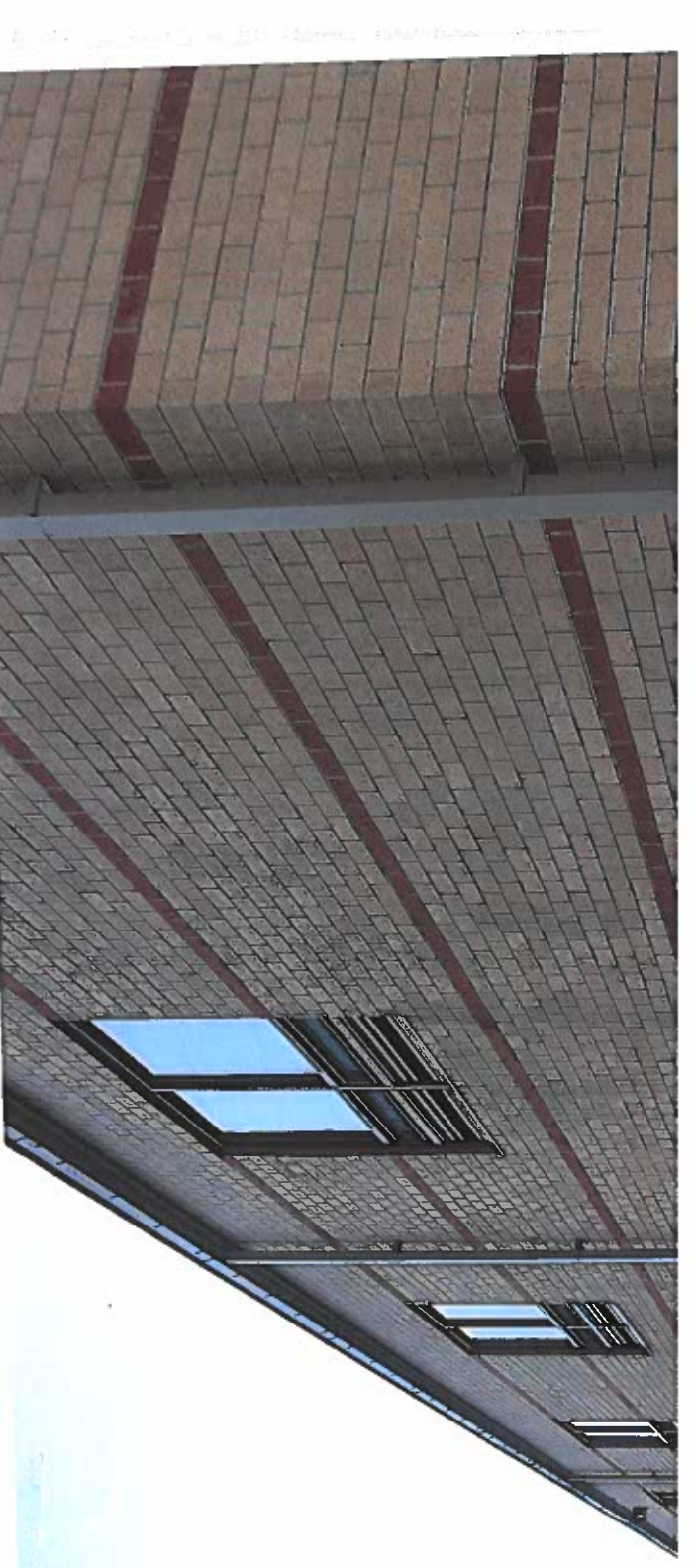
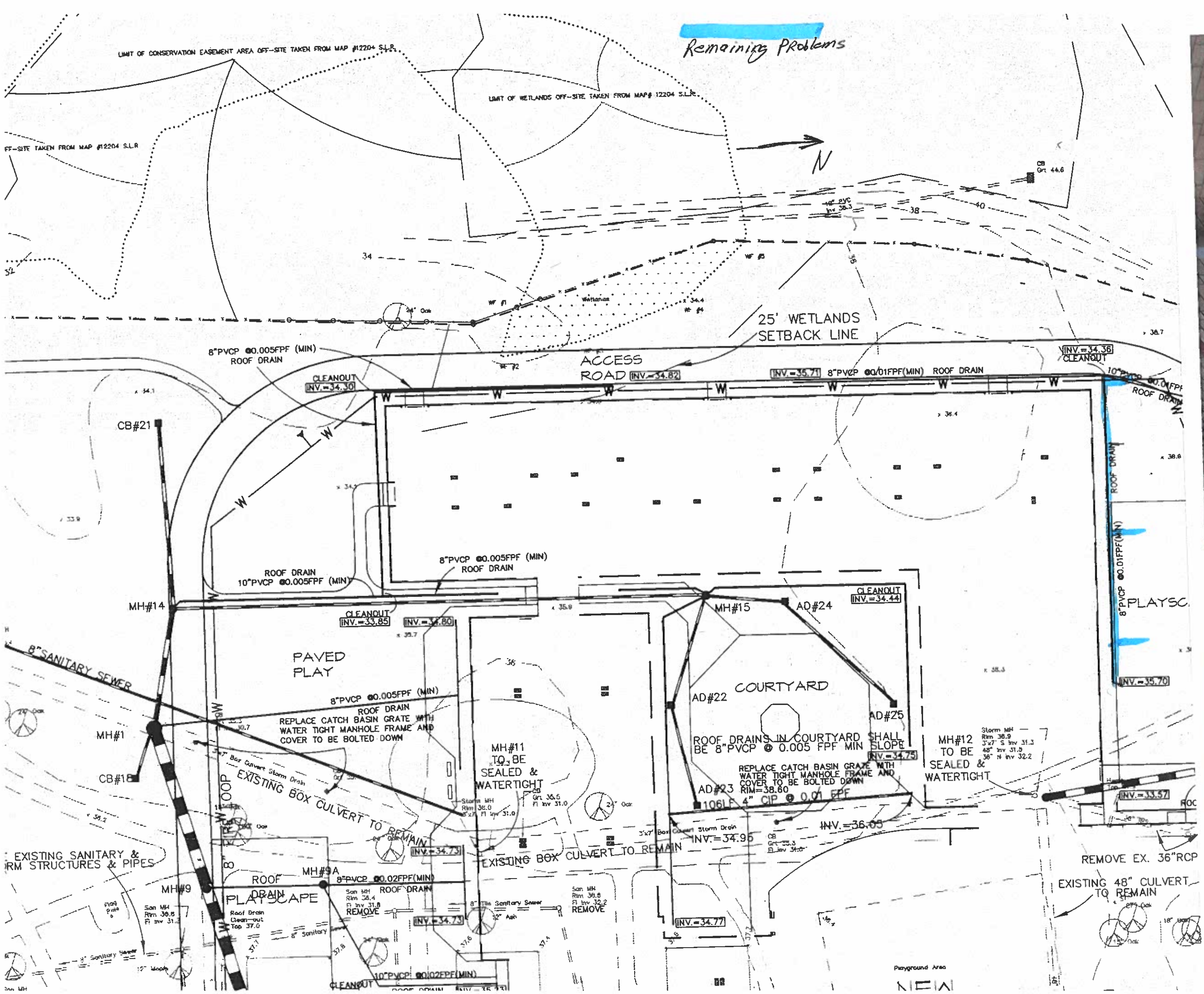
PLAYSCAPE

EXISTING BOX CULVERT TO REMAIN

*All clogged drains cleared  
except 3 underground leader drain connections shown on next page*

NEW

Remaining Problems



North side of building