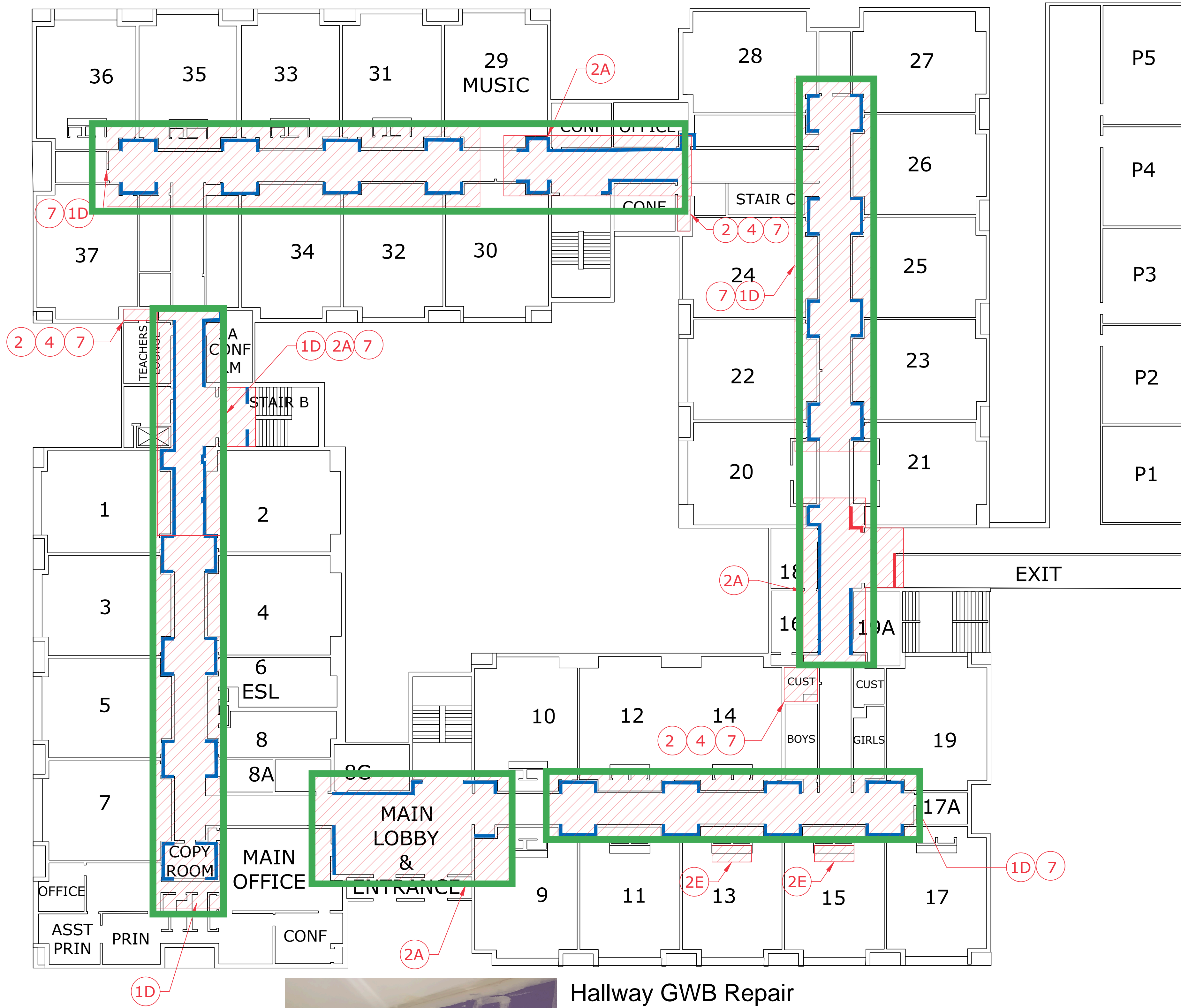


Top Level Hallways and Skylights:

AOC 08, AOC 10, AOC 19 - AOC 21, and AOC 24

Replaced mold impacted drywall in Upper Level Halls outside entryways of classrooms



Entry of Room 2 GWB Repair



Hallway GWB Repair under skylight framing



Hallway GWB Repair between Rooms 1 and 7

Toquam Magnet School

City of Stamford

Stamford, CT

MARK	DATE	DESCRIPTION
PROJECT NO:	S2087	
DATE:	05/30/2019	
FILE:	Toquam Updated Floor Plan.dwg	
DRAWN BY:	WAC & BG	
CHECKED:	KM	
APPROVED:	KM	

SUMMER 2019 WORK

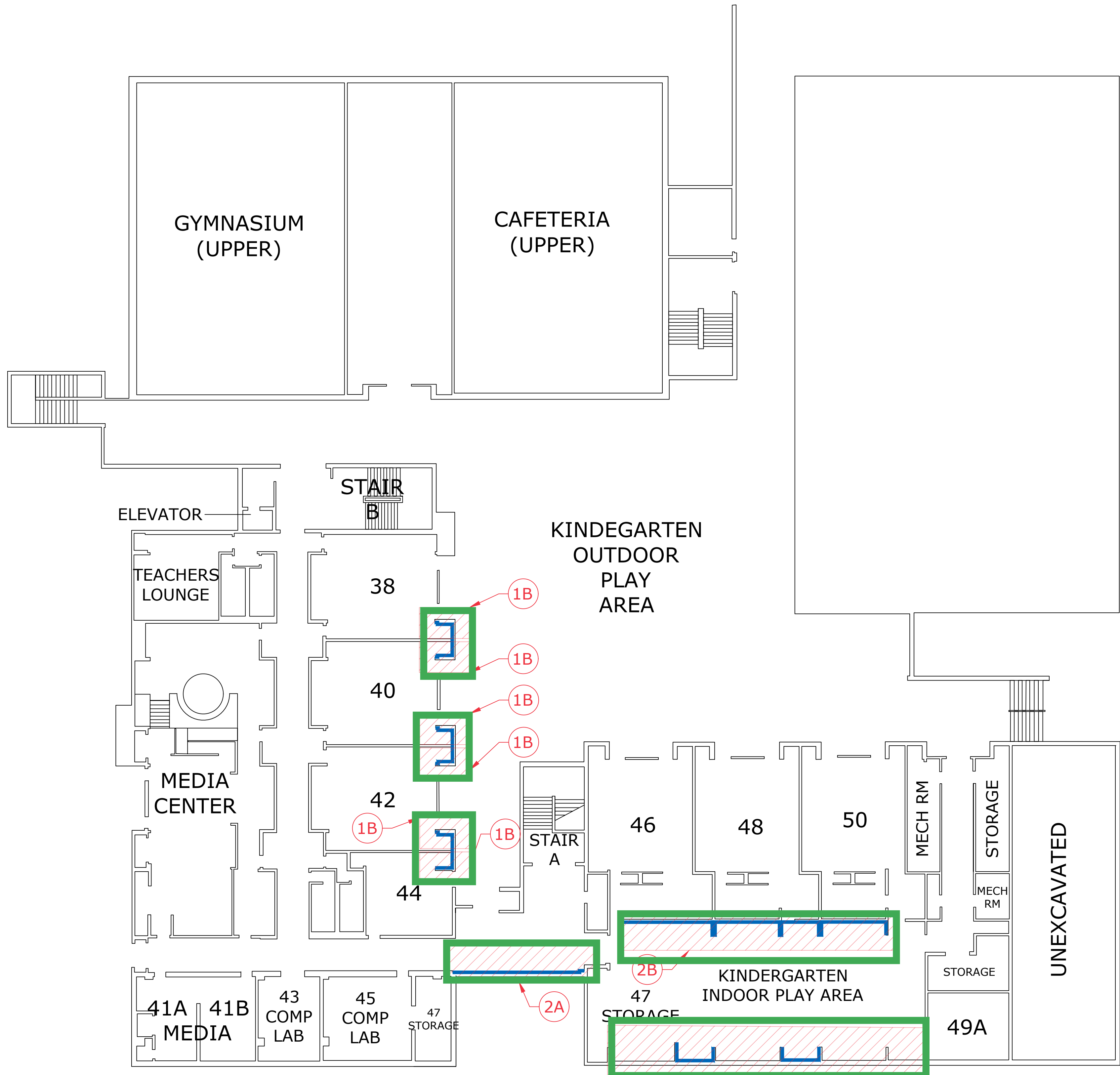
SCALE: NOT TO SCALE

Figure 3.1

Hallways Throughout:

AOC

Work in area has not begun



- 1C:** MIDDLE LEVEL PLAY AREA - REMOVAL INCLUDES VERTICAL WALL AT EXTERIOR TO FLOOR, VERTICAL WALL FACING EXTERIOR TO CEILING LINE, AND VERTICAL SIDE WALLS AND CEILINGS TO STEEL COLUMN (35" OUT FROM EXTERIOR WALL).
- 1D:** UPPER LEVEL CORRIDORS - REMOVAL INCLUDES VERTICAL WALL AT CLASSROOM ENTRY TO FLOOR, VERTICAL SIDE WALLS TO CMU, VERTICAL WALL FACING ENTRY, AND SLANTED CEILING. REMOVAL TO INCLUDE ALL ASBESTOS CONTAINING COMPOUND DAUBS ON CMU LOCATED BEHIND GYPSUM WALLS.
- 2. THE CONTRACTOR SHALL REMOVE, PACKAGE, AND TRANSPORT ASBESTOS-CONTAINING JOINT/TAPING COMPOUND AND ASSOCIATED GYPSUM BOARD WALLS.
 - 2A:** UPPER LEVEL CORRIDORS AND MIDDLE LEVEL CORRIDORS AND PLAY AREA - REMOVAL INCLUDES WALL LOCATIONS WITH VINYL COVERING.
 - 2B:** MIDDLE LEVEL PLAY AREA OUTSIDE AT CLASSROOM ENTRIES - REMOVAL INCLUDES WALL LOCATIONS WITH VINYL COVERING. REMOVAL INCLUDES VERTICAL ENTRY WALLS TO BENCH, VERTICAL SIDE WALLS TO BENCH AND OUT TO STEEL COLUMNS (35" OUT FROM ENTRY WALL), AND CEILINGS TO STEEL COLUMN (35" OUT FROM ENTRY WALL).
 - 2C:** LOWER LEVEL TEACHER'S LOUNGE - REMOVAL INCLUDES VERTICAL WALL ABOVE EXTERIOR DOOR SYSTEM.
 - 2D:** UPPER LEVEL CLASSROOMS AND MIDDLE LEVEL TEACHER'S LOUNGE - REMOVAL INCLUDES VERTICAL WALL/SOFFIT ABOVE EXTERIOR WINDOW SYSTEMS.
 - 2E:** UPPER LEVEL CLASSROOMS - REMOVAL INCLUDES WALLS/CEILING ISLAND SYSTEM.
 - 2F:** MIDDLE LEVEL COMPUTER ROOM - REMOVAL INCLUDES 10 SQUARE FEET OF DAMAGED WALL AT ENTRY
- 3. THE CONTRACTOR SHALL REMOVE, PACKAGE, AND TRANSPORT ASBESTOS-CONTAINING JOINT/TAPING COMPOUND AND ASSOCIATED GYPSUM BOARD 6" SOFFIT BELOW SKYLIGHT OPENINGS IN CAFETERIA AND GYMNASIUM.
- 4. THE CONTRACTOR SHALL REMOVE, PACKAGE, AND TRANSPORT ASBESTOS-CONTAINING JOINT/TAPING COMPOUND AND ASSOCIATED GYPSUM BOARD CEILINGS (REMOVAL INCLUDES ASSOCIATED ASBESTOS MUDDED PIPE FITTING INSULATIONS).
- 5. THE CONTRACTOR SHALL REMOVE, PACKAGE, AND TRANSPORT ASBESTOS-CONTAINING JOINT/TAPING COMPOUND AND ASSOCIATED GYPSUM BOARD COLUMNS WITHIN LOWER LEVEL BOILER ROOM.
- 6. THE CONTRACTOR SHALL REMOVE MOLD IMPACTED AND/OR WATER-STAINED FIBERGLASS DUCT INSULATION WITHIN MIDDLE LEVEL STORAGE ROOM AND MECHANICAL ROOM.
- 7. THE CONTRACTOR SHALL REMOVE MOLD IMPACTED AND/OR WATER-STAINED FIBERGLASS PIPE INSULATION (REMOVAL INCLUDES ASSOCIATED ASBESTOS MUDDED PIPE FITTING INSULATIONS) AND MOLD IMPACTED AND/OR WATER STAINED CEILING TILES.

GENERAL PROJECT NOTES

IF SUSPECT MOLD IS DISCOVERED WITHIN VOIDS AFTER GYPSUM BOARD REMOVAL, THE CONTRACTOR SHALL CONDUCT APPROVED MOLD REMEDIATION METHODS TO REMOVE THE SUSPECT MOLD.

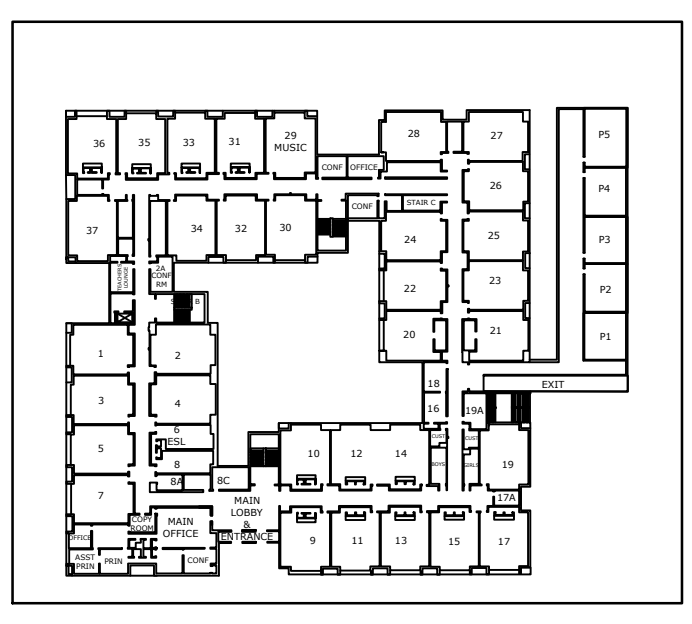
THE CONTRACTOR SHALL ESTABLISH A REGULATED AREA ENCLOSURE IN ACCORDANCE WITH EPA AND CTDPH ASBESTOS ABATEMENT STANDARDS FOR ALL ASBESTOS REMOVAL WORK.

IF ENCOUNTERED DURING GYPSUM WALL DEMOLITION, THE CONTRACTOR IS RESPONSIBLE TO REMOVE ALL OTHER SUSPECT ASBESTOS-CONTAINING MATERIALS INCLUDING, BUT NOT LIMITED TO, PLUMBING INSULATIONS ASSOCIATED WITH PIPES, PIPE FITTINGS, AND ROOF DRAINS.

THIS PROJECT MAY REQUIRE MULTIPLE MOBILIZATIONS AND CONTAINMENTS. THE CONTRACTOR IS RESPONSIBLE FOR COORDINATING ABATEMENT WORK REQUIRED WITH THE BUILDING OWNER, OTHER TRADES, ARCHITECT, AND CONSULTANT.

THE CONTRACTOR IS RESPONSIBLE FOR PROVIDING TEMPORARY WATER, POWER, HEAT, LIFTS, STAGING, ETC. AS NEEDED AT THE SITE. TEMPORARY LIGHTING WITHIN THE WORK AREAS MUST BE CONNECTED TO GROUND FAULT CIRCUIT INTERRUPTER (GFCI) POWER PANELS INSTALLED BY A STATE OF CONNECTICUT LICENSED ELECTRICIAN, PERMITTED AS REQUIRED, AND LOCATED OUTSIDE OF THE WORK AREAS.

MIDDLE LEVEL



Toquam Magnet School

City of Stamford

Stamford, CT

MARK	DATE	DESCRIPTION
PROJECT NO:	S2087	
DATE:	5/30/2019	
FILE:	Toquam Updated Floor Plan.dwg	
DRAWN BY:	WAC & BG	
CHECKED:	KM	
APPROVED:	KM	

SUMMER 2019 WORK

SCALE: NOT TO SCALE

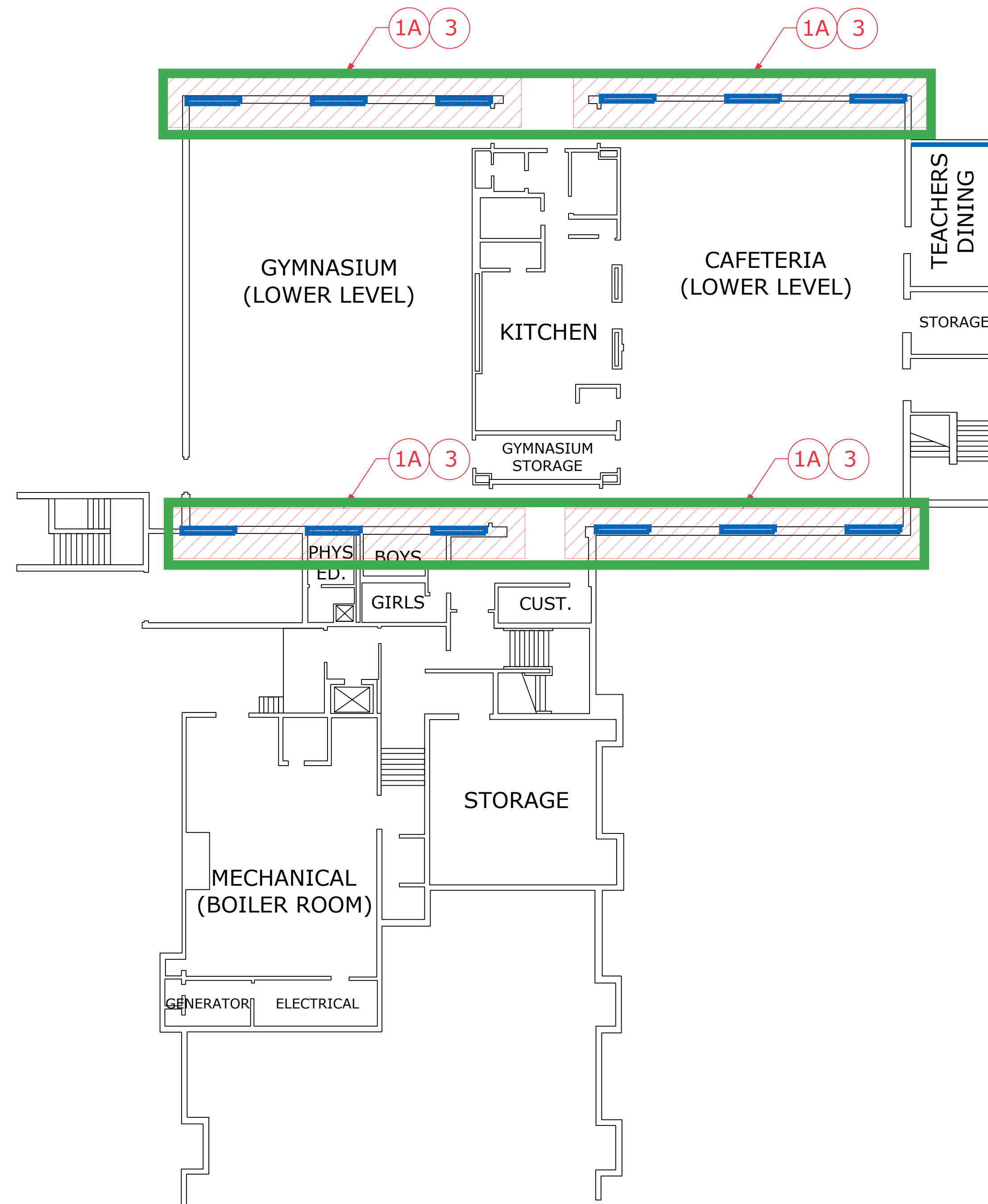
Figure 3.2

Plot Date: 5/30/2019 11:30 AM By: BGavizetti
 Plotted On: May 30, 2019 11:30 AM
 Tighe & Bond: J:\S2087 - Stamford\033 Mold Remediation - Consulting\Site\Toquam Magnet\Drawings\CAD\Toquam Updated Floor Plan.dwg

Hallways Throughout:

AOC 19

Work in area has not begun



- FLOOR, VERTICAL WALL FACING EXTERIOR TO CEILING LINE, AND VERTICAL SIDE WALLS AND CEILINGS TO STEEL COLUMN (35" OUT FROM EXTERIOR WALL).
- 1D:** UPPER LEVEL CORRIDORS - REMOVAL INCLUDES VERTICAL WALL AT CLASSROOM ENTRY TO FLOOR, VERTICAL SIDE WALLS TO CMU, VERTICAL WALL FACING ENTRY, AND SLANTED CEILING. REMOVAL TO INCLUDE ALL ASBESTOS CONTAINING COMPOUND DAUBS ON CMU LOCATED BEHIND GYPSUM WALLS.
2. THE CONTRACTOR SHALL REMOVE, PACKAGE, AND TRANSPORT ASBESTOS-CONTAINING JOINT/TAPING COMPOUND AND ASSOCIATED GYPSUM BOARD WALLS.
- 2A:** UPPER LEVEL CORRIDORS AND MIDDLE LEVEL CORRIDORS AND PLAY AREA - REMOVAL INCLUDES WALL LOCATIONS WITH VINYL COVERING.
- 2B:** MIDDLE LEVEL PLAY AREA OUTSIDE AT CLASSROOM ENTRIES - REMOVAL INCLUDES WALL LOCATIONS WITH VINYL COVERING. REMOVAL INCLUDES VERTICAL ENTRY WALLS TO BENCH, VERTICAL SIDE WALLS TO BENCH AND OUT TO STEEL COLUMNS (35" OUT FROM ENTRY WALL), AND CEILINGS TO STEEL COLUMN (35" OUT FROM ENTRY WALL).
- 2C:** LOWER LEVEL TEACHER'S LOUNGE - REMOVAL INCLUDES VERTICAL WALL ABOVE EXTERIOR DOOR SYSTEM.
- 2D:** UPPER LEVEL CLASSROOMS AND MIDDLE LEVEL TEACHER'S LOUNGE - REMOVAL INCLUDES VERTICAL WALL/SOFFIT ABOVE EXTERIOR WINDOW SYSTEMS.
- 2E:** UPPER LEVEL CLASSROOMS - REMOVAL INCLUDES WALLS/CEILING ISLAND SYSTEM.
- 2F:** MIDDLE LEVEL COMPUTER ROOM - REMOVAL INCLUDES 10 SQUARE FEET OF DAMAGED WALL AT ENTRY
3. THE CONTRACTOR SHALL REMOVE, PACKAGE, AND TRANSPORT ASBESTOS-CONTAINING JOINT/TAPING COMPOUND AND ASSOCIATED GYPSUM BOARD 6" SOFFIT BELOW SKYLIGHT OPENINGS IN CAFETERIA AND GYMNASIUM.
4. THE CONTRACTOR SHALL REMOVE, PACKAGE, AND TRANSPORT ASBESTOS-CONTAINING JOINT/TAPING COMPOUND AND ASSOCIATED GYPSUM BOARD CEILINGS (REMOVAL INCLUDES ASSOCIATED ASBESTOS MUDDED PIPE FITTING INSULATIONS).
5. THE CONTRACTOR SHALL REMOVE, PACKAGE, AND TRANSPORT ASBESTOS-CONTAINING JOINT/TAPING COMPOUND AND ASSOCIATED GYPSUM BOARD COLUMNS WITHIN LOWER LEVEL BOILER ROOM.
6. THE CONTRACTOR SHALL REMOVE MOLD IMPACTED AND/OR WATER-STAINED FIBERGLASS DUCT INSULATION WITHIN MIDDLE LEVEL STORAGE ROOM AND MECHANICAL ROOM.
7. THE CONTRACTOR SHALL REMOVE MOLD IMPACTED AND/OR WATER-STAINED FIBERGLASS PIPE INSULATION (REMOVAL INCLUDES ASSOCIATED ASBESTOS MUDDED PIPE FITTING INSULATIONS) AND MOLD IMPACTED AND/OR WATER STAINED CEILING TILES.

GENERAL PROJECT NOTES

IF SUSPECT MOLD IS DISCOVERED WITHIN VOIDS AFTER GYPSUM BOARD REMOVAL, THE CONTRACTOR SHALL CONDUCT APPROVED MOLD REMEDIATION METHODS TO REMOVE THE SUSPECT MOLD.

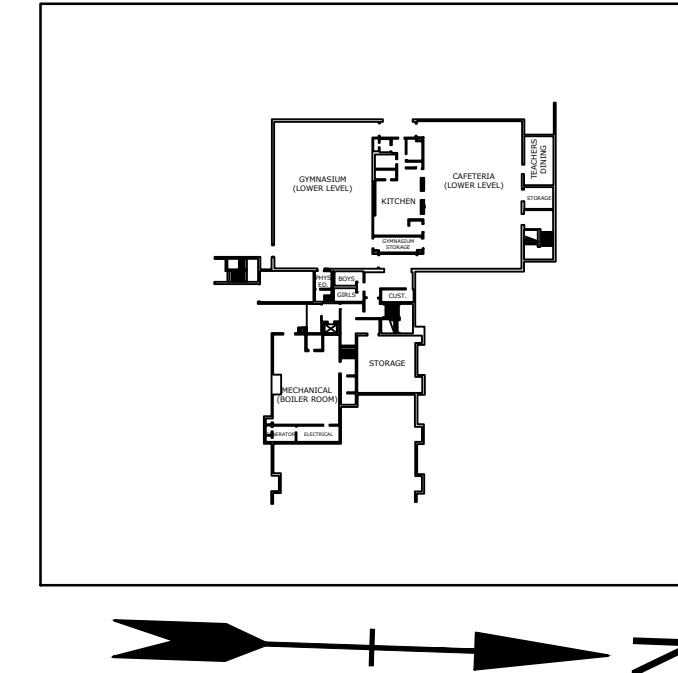
THE CONTRACTOR SHALL ESTABLISH A REGULATED AREA ENCLOSURE IN ACCORDANCE WITH EPA AND CTDPH ASBESTOS ABATEMENT STANDARDS FOR ALL ASBESTOS REMOVAL WORK.

IF ENCOUNTERED DURING GYPSUM WALL DEMOLITION, THE CONTRACTOR IS RESPONSIBLE TO REMOVE ALL OTHER SUSPECT ASBESTOS-CONTAINING MATERIALS INCLUDING, BUT NOT LIMITED TO, PLUMBING INSULATIONS ASSOCIATED WITH PIPES, PIPE FITTINGS, AND ROOF DRAINS.

THIS PROJECT MAY REQUIRE MULTIPLE MOBILIZATIONS AND CONTAINMENTS. THE CONTRACTOR IS RESPONSIBLE FOR COORDINATING ABATEMENT WORK REQUIRED WITH THE BUILDING OWNER, OTHER TRADES, ARCHITECT, AND CONSULTANT.

THE CONTRACTOR IS RESPONSIBLE FOR PROVIDING TEMPORARY WATER, POWER, HEAT, LIFTS, STAGING, ETC. AS NEEDED AT THE SITE. TEMPORARY LIGHTING WITHIN THE WORK AREAS MUST BE CONNECTED TO GROUND FAULT CIRCUIT INTERRUPTER (GFCI) POWER PANELS INSTALLED BY A STATE OF CONNECTICUT LICENSED ELECTRICIAN, PERMITTED AS REQUIRED, AND LOCATED OUTSIDE OF THE WORK AREAS.

LOWER LEVEL



Toquam Magnet School

City of Stamford

Stamford, CT

MARK	DATE	DESCRIPTION
PROJECT NO:	S2087	
DATE:	5/30/2019	
FILE:	Toquam Updated Floor Plan.dwg	
DRAWN BY:	WAC & BG	
CHECKED:	KM	
APPROVED:	KM	

SUMMER 2019 WORK

SCALE: NOT TO SCALE

Figure 3.3