

RED HATCH

Remove Non-Asbestos-Containing Pipe Insulation and Fitting Insulation in Vicinity of Air Handler Units. Clean Area with Shockwave Following Removal. Conduct Work in a One Layer Negative Pressure Mold Containment. Conduct PCM Final Air Clearance.

BLUE HATCH

Remove Mold Growth Impacted Drywall and Asbestos-Containing Joint Compound in Entirety. Remove Non-Asbestos Pipe Insulation and Fitting Insulation. Clean Area with Shockwave Following Removal. Conduct Work in An Asbestos Abatement Containment. Conduct TEM Final Air Clearance.

Plot: S:\2019-2020\2019-11-14\11-14-11-14\11-14-11-14.dwg
 Plotted On: Mar 20, 2019 11:43am By: wechamps@pape
 Title & Board: S:\2019-2020\2019-11-14\11-14-11-14.dwg

Toquam Magnet School

City of Stamford

Stamford, CT

MARK	DATE	DESCRIPTION
PROJECT NO:	S2087	
DATE:	3/12/2019	
FILE:	Toquam Updated Floor Plan.dwg	
DRAWN BY:	WAC	
CHECKED:	XX	
APPROVED:	XX	

MIDDLE LEVEL

SCALE: NOT TO SCALE

Areas of Concern

RED HATCH/GREEN HATCH

Clean Walls and Top of Closet/Bathroom Drywall, Pipe Fittings, and Air Handler Unit with Shockwave. HEPA Vacuum Roofing Debris and Dust/Debris Prior to Cleaning.

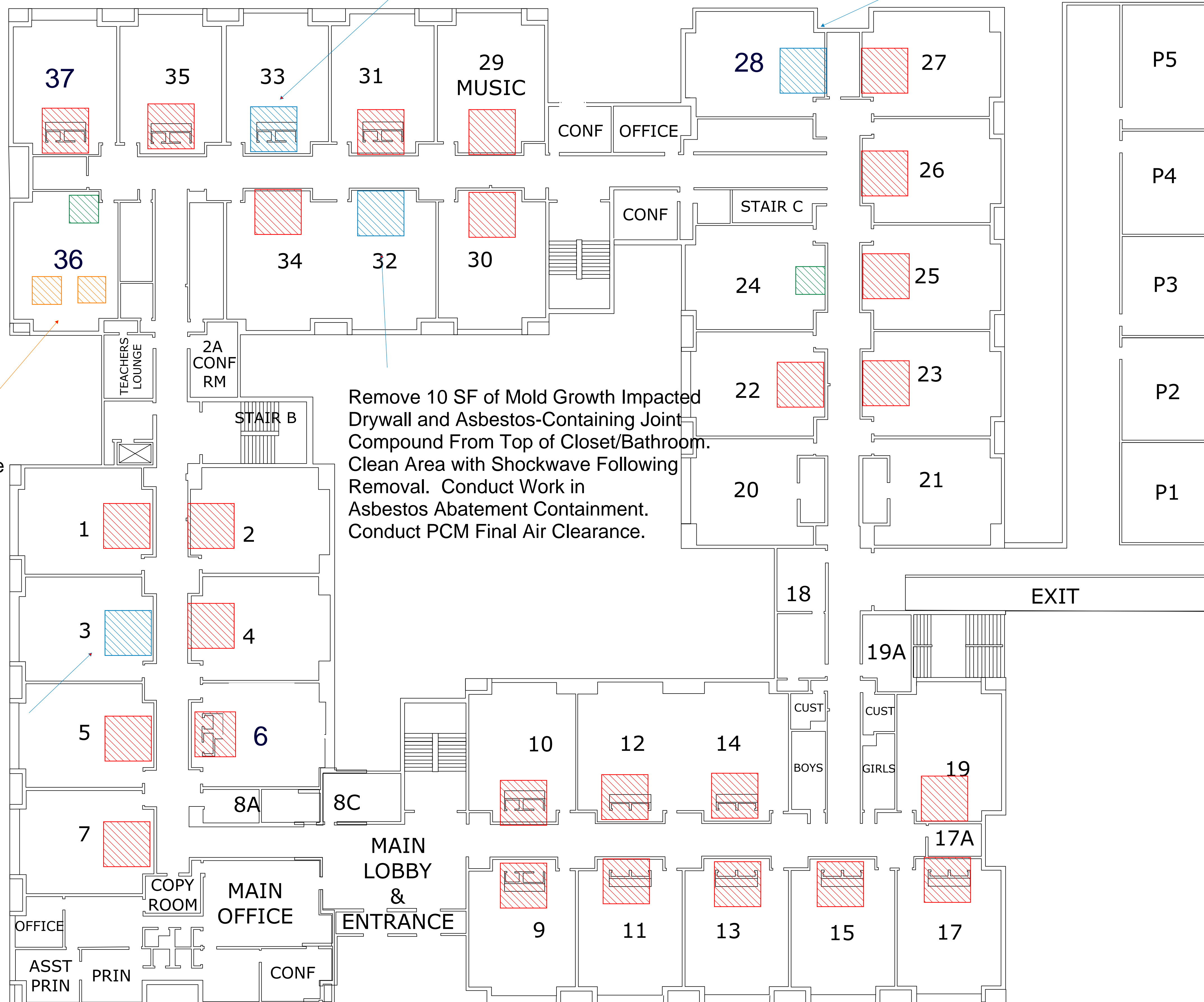
Remove 25 SF of Mold growth Impacted Drywall and Asbestos-Containing Joint Compound From Top of Closet/Bathroom. Clean Area with Shockwave Following Removal. Conduct Work in Asbestos Abatement Containment. Conduct PCM Final Air Clearance.

Remove 50 SF of Water Damaged Drywall and Asbestos -Containing Joint Compound From Top and Bottom of Overhang. Clean Area with Shockwave Following Removal. Conduct Work in Asbestos Abatement Containment. Conduct PCM Final Air Clearance.

Remove 2 SF of Asbestos-Containing Floor Tile/Mastic in 2 Locations Where Holes are. Conduct Work in An Asbestos Abatement Contianment. Conduct PCM Final Air Clearance

Remove 10 SF of Mold Growth Impacted Drywall and Asbestos-Containing Joint Compound From Top of Closet/Bathroom. Clean Area with Shockwave Following Removal. Conduct Work in Asbestos Abatement Containment. Conduct PCM Final Air Clearance.

Remove 25 SF of Mold Growth Impacted Drywall and Asbestos-Containing Joint Compound From Top of Closet and 10 SF of Mold Growth Impacted Drywall and Asbestos-Containing Joint Compound from Closet Ceiling. Clean Area with Shockwave Following Removal. Conduct Work in Asbestos Abatement Containment. Conduct PCM Final Air Clearance.



Toquam Magnet School

City of Stamford

Stamford, CT

MARK	DATE	DESCRIPTION
PROJECT NO:	S2087	
DATE:	3/12/2019	
FILE:	Toquam Updated Floor Plan.dwg	
DRAWN BY:	WAC	
CHECKED:	XX	
APPROVED:	XX	

UPPER LEVEL

SCALE: NOT TO SCALE

Last Saved: 3/12/2019 11:42am By: wac
 Plotted On: Mar 20, 2019 11:42am By: wac
 Title & Board: S:\S2087 - Stamford\1033 - Toquam Magnet School\Upper Level.dwg

