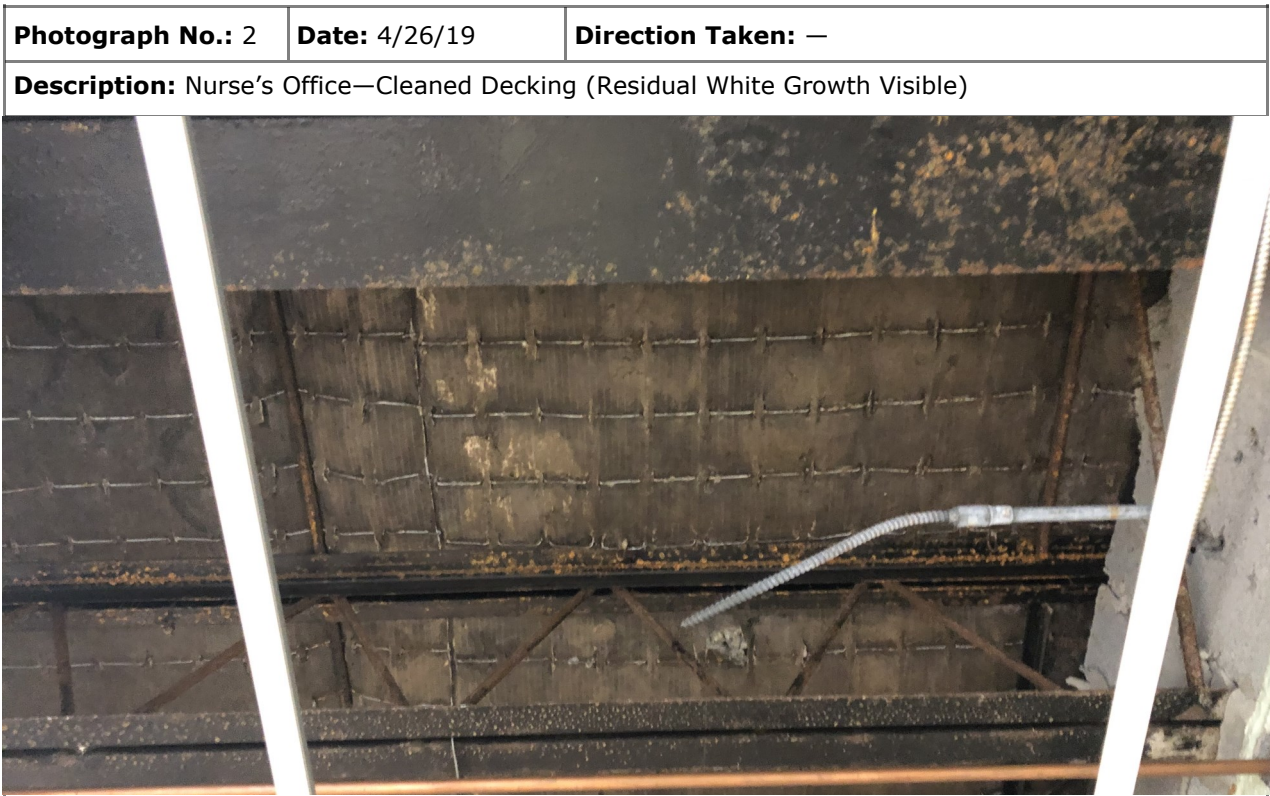
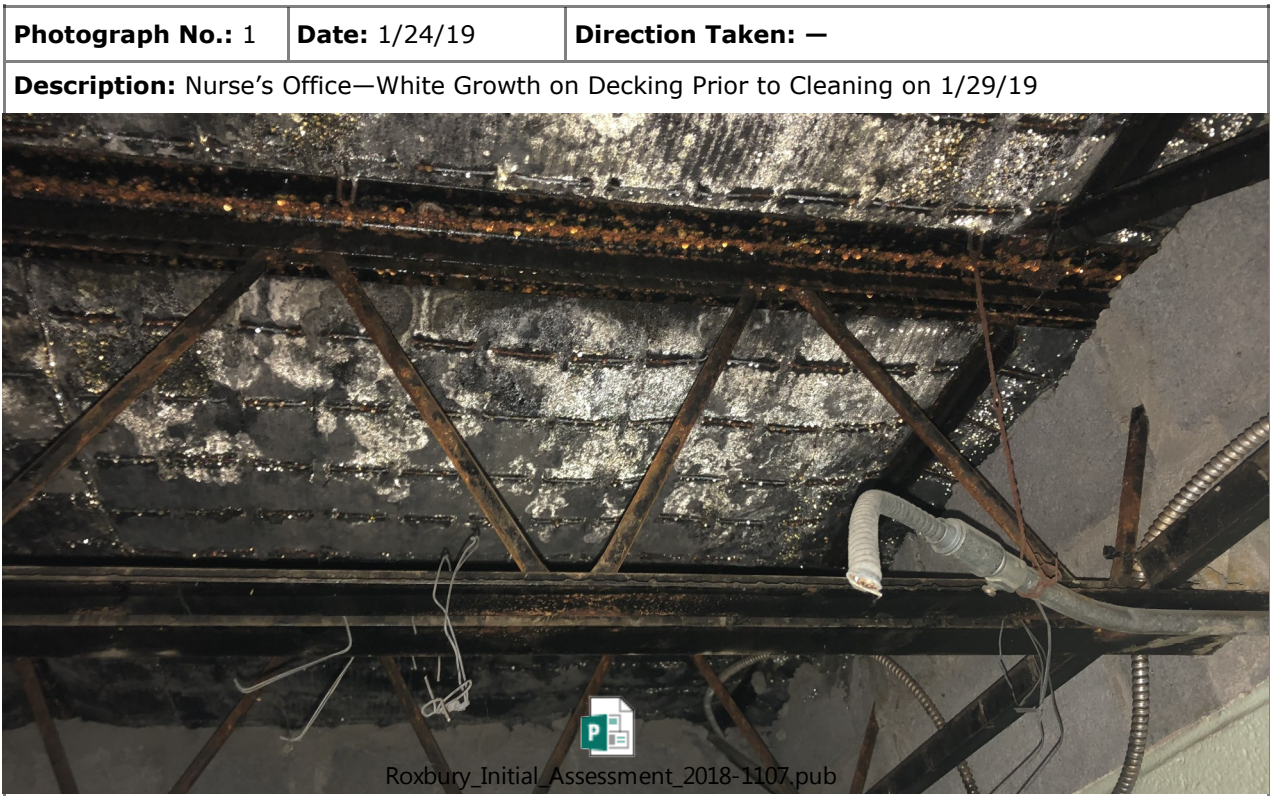


Nurse's Office — Photographic Log

Client: City of Stamford Mold Task Force

Job Number: S-2087-033

Site: Roxbury Elementary School




Nurse's Office —Photographic Log

Client: City of Stamford Mold Task Force

Job Number: S-2087-033

Site: Roxbury Elementary School

Photograph No.: 3	Date: 4/26/19	Direction Taken: —
Description: Nurse's Office—Return Above Ceiling Tile Elevation		



Roxbury_Initial_Assessment_2018-1107.pub