



INDEX

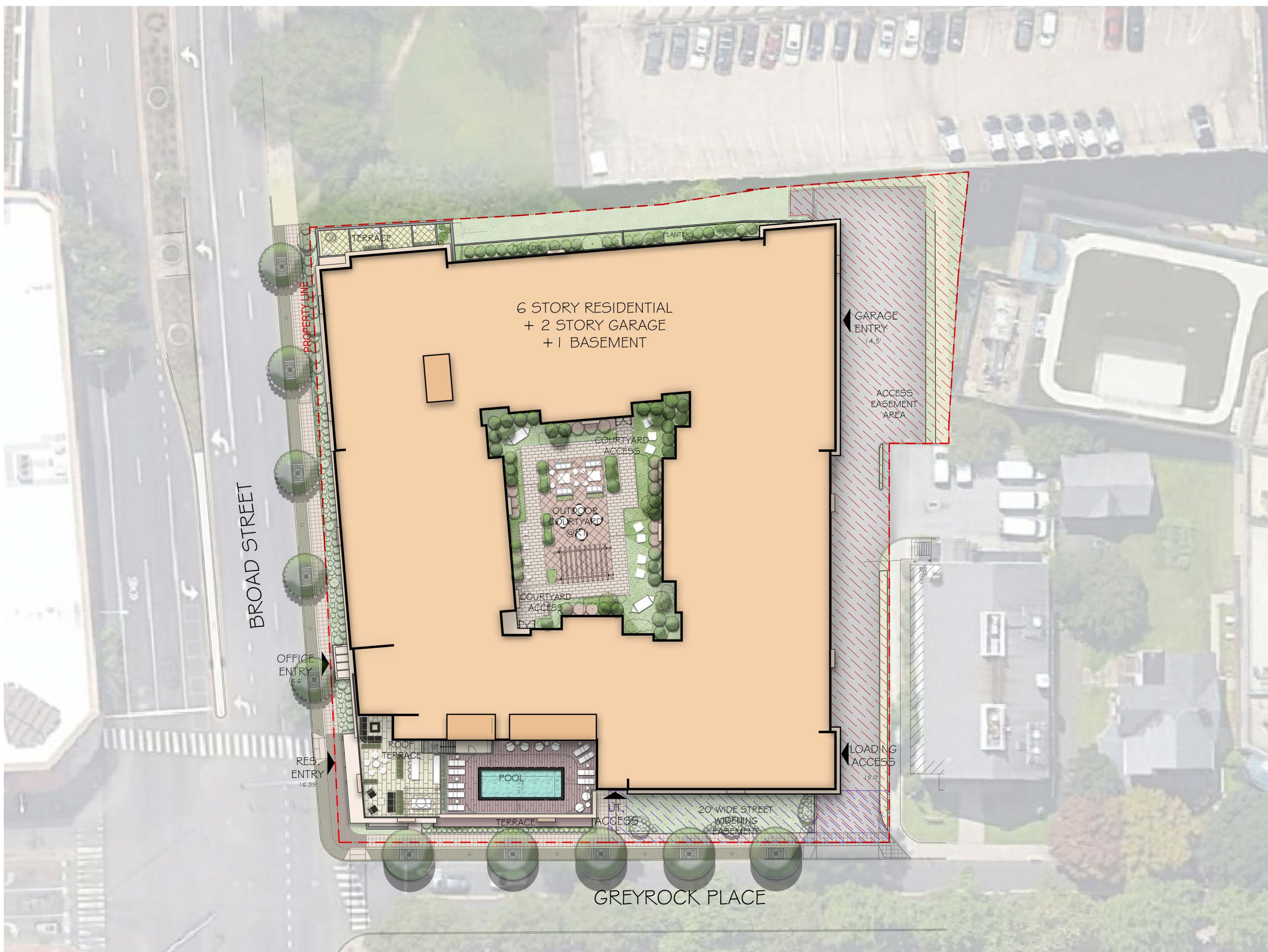
- A.00 - COVER
- A.01 - ILLUSTRATIVE SITE PLAN
- A.02 - FLOOR PLANS
- A.03 - FLOOR PLANS
- A.04 - FLOOR PLANS
- A.05 - BUILDING SECTIONS
- A.06 - BUILDING ELEVATIONS
- A.07 - BUILDING ELEVATIONS
- A.08 - MATERIAL BOARD

*NOTES:

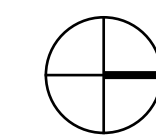
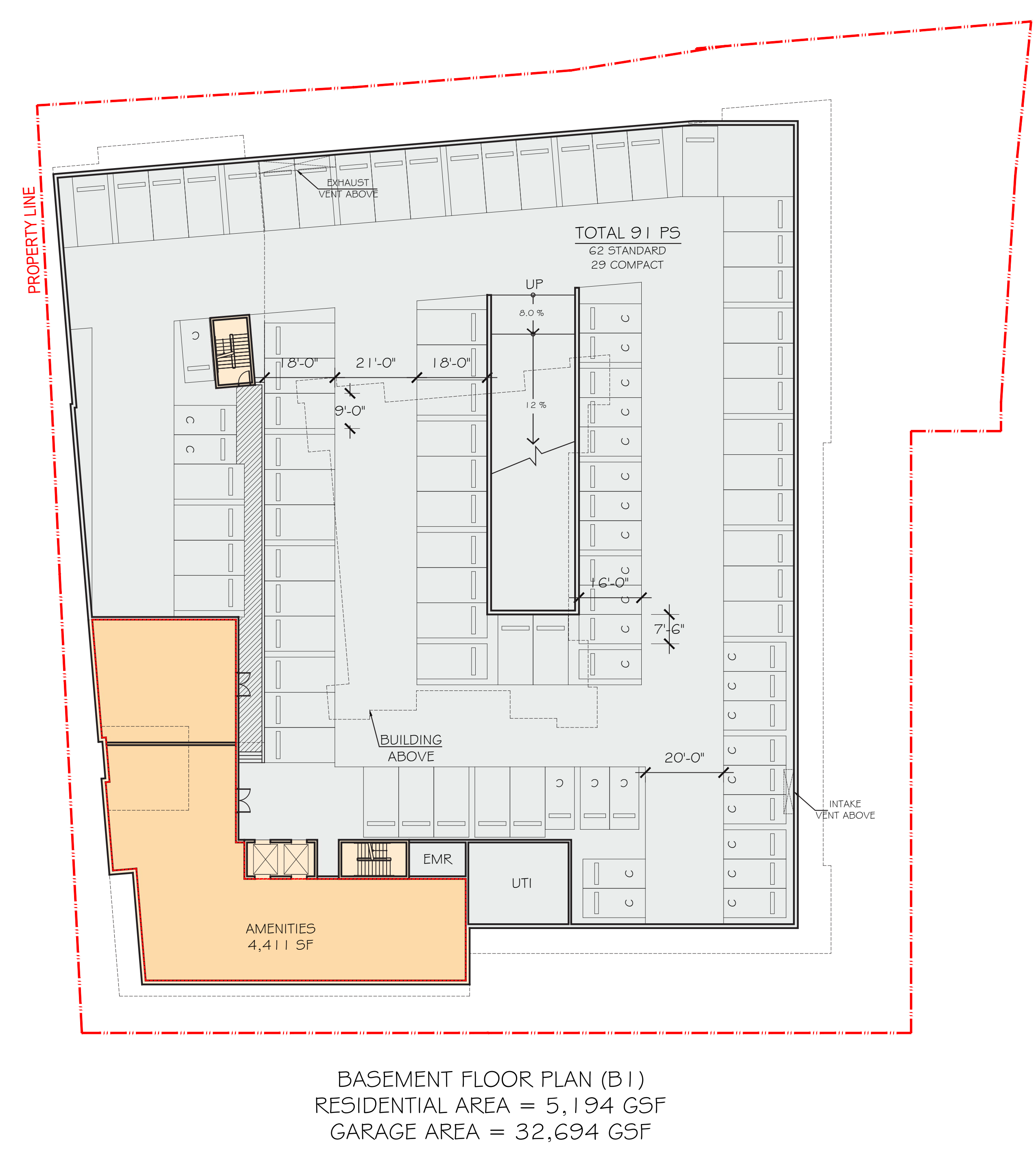
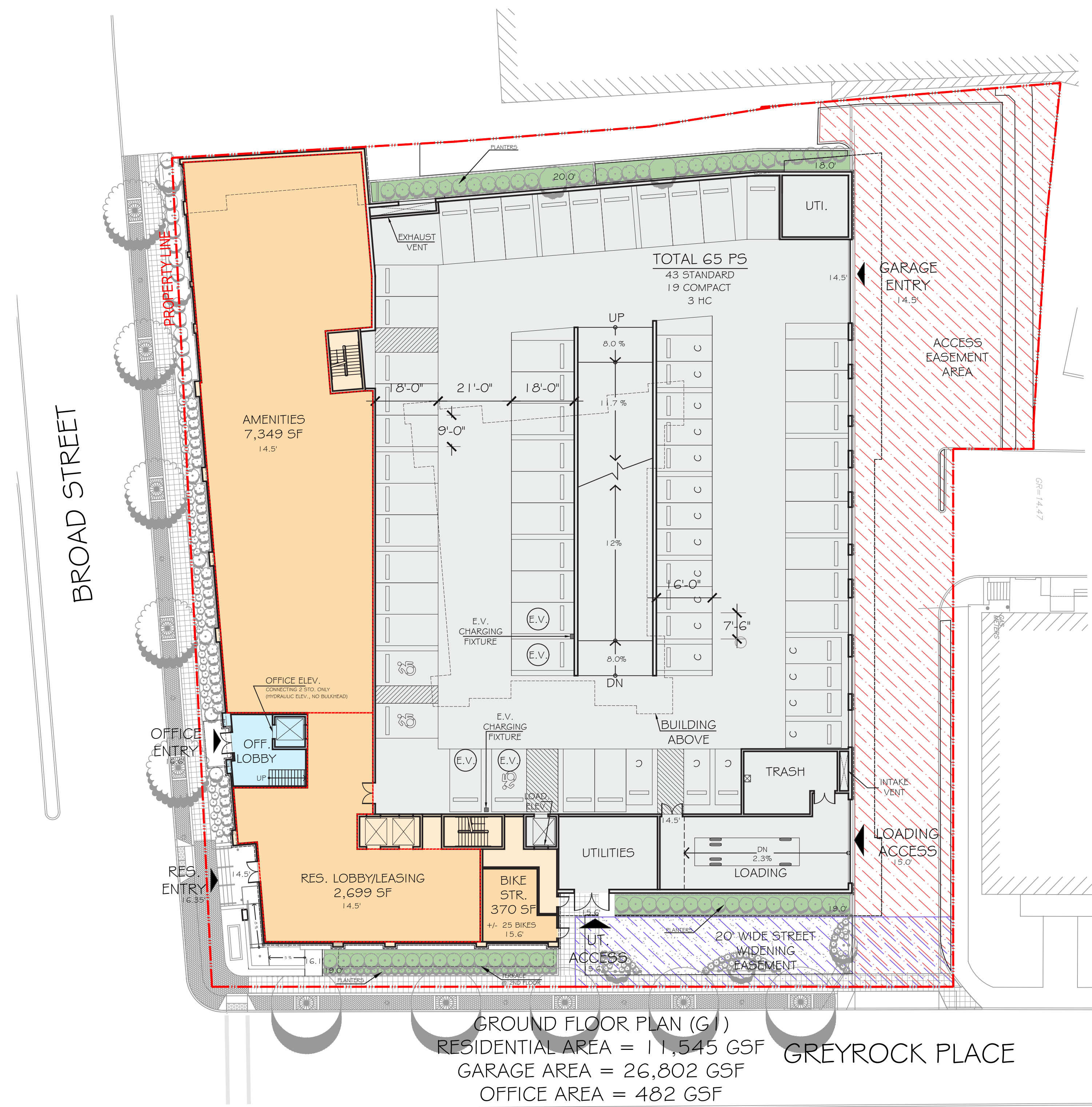
- * REFER TO CIVIL FOR SITE PLAN AND CIVIL INFORMATION.
- ** LANDSCAPE SHOWN FOR ILLUSTRATIVE PURPOSES ONLY. REFER TO LANDSCAPE ARCHITECT DRAWINGS FOR TREES, COURTYARD, TERRACES AND LANDSCAPE INFORMATION.
- *** DECORATIVE LIGHTING AND SIGNAGE SHOWN FOR ILLUSTRATIVE PURPOSES ONLY.
- ****PERSPECTIVE VIEW SHOWN FOR ILLUSTRATIVE PURPOSES

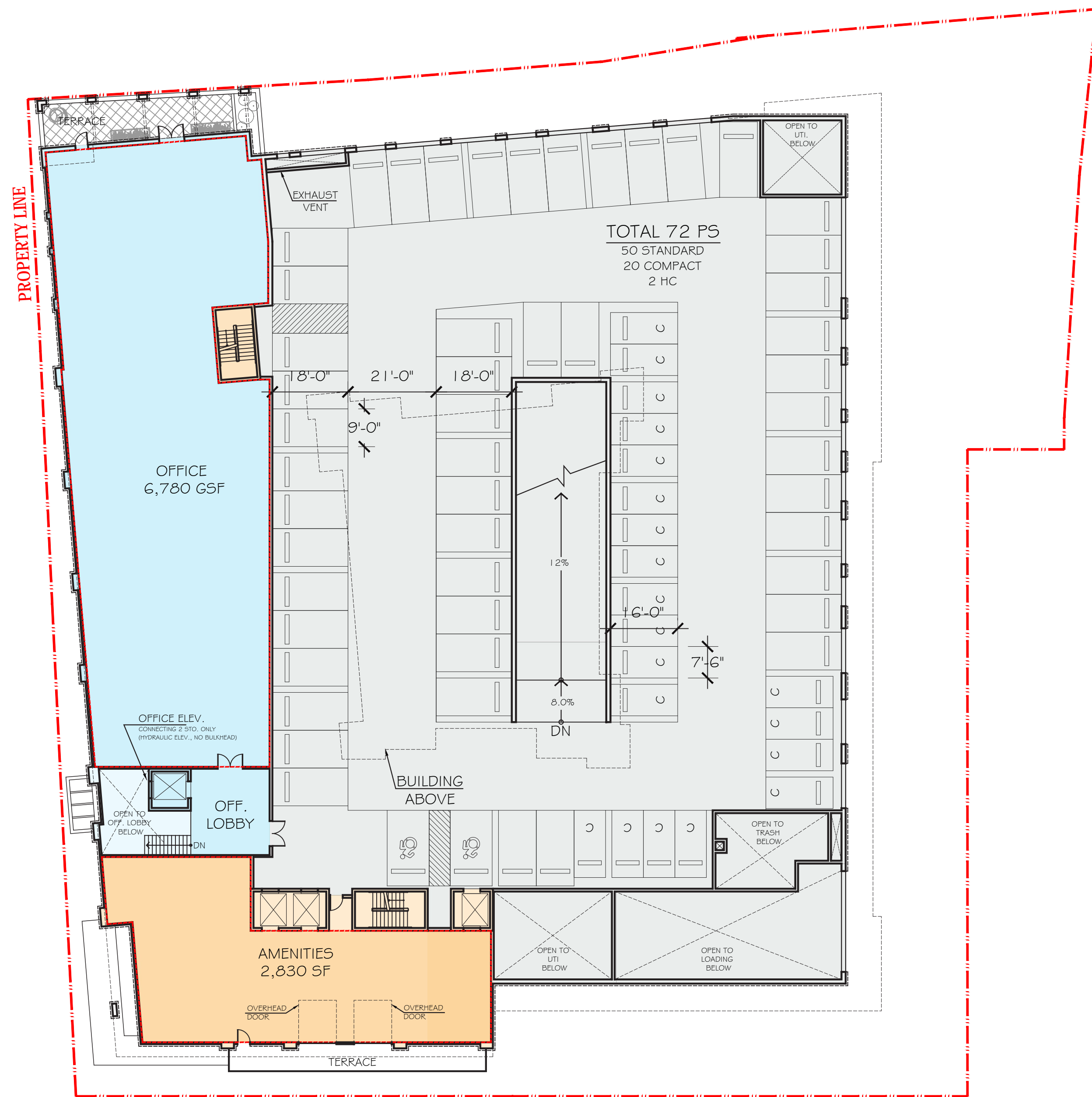
SUMMARY OF PROVISIONS

RESIDENTIAL AREA =	+/- 230,646 GSF
TOTAL UNITS =	228 UNITS
TOTAL PARKING =	228 PS
PARKING RATIO =	1 PS/UNIT
RESIDENTIAL AMENITIES =	+/- 21,007 GSF
OFFICE AREA =	+/- 7,912 GSF

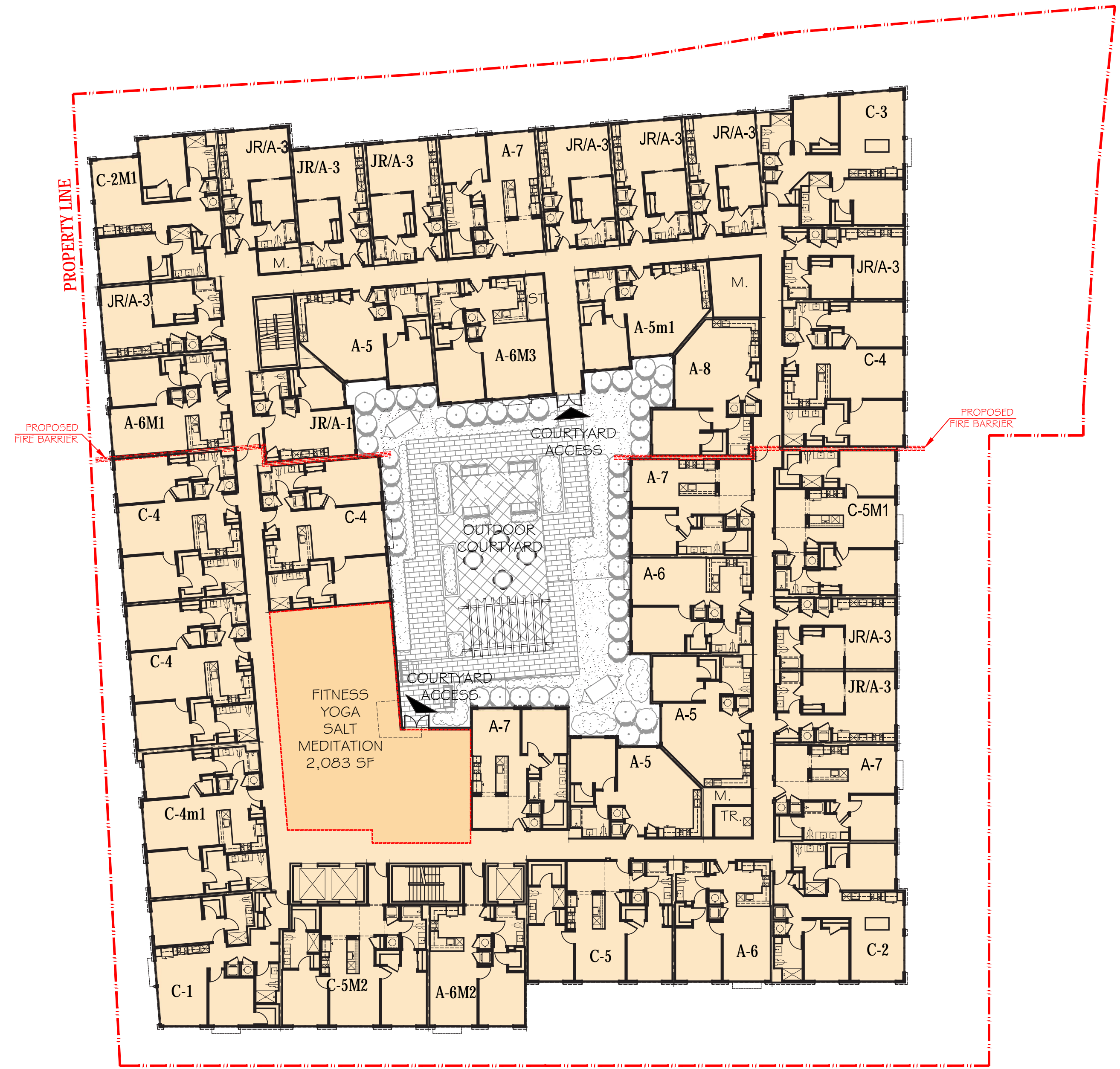


*NOTE: REFER TO CIVIL FOR SITE PLAN AND CIVIL INFORMATION.
 LANDSCAPE SHOWN FOR ILLUSTRATIVE PURPOSES ONLY.
 REFER TO LANDSCAPE ARCHITECT DRAWINGS FOR TREES AND LANDSCAPE INFORMATION.

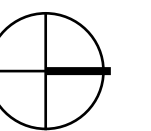


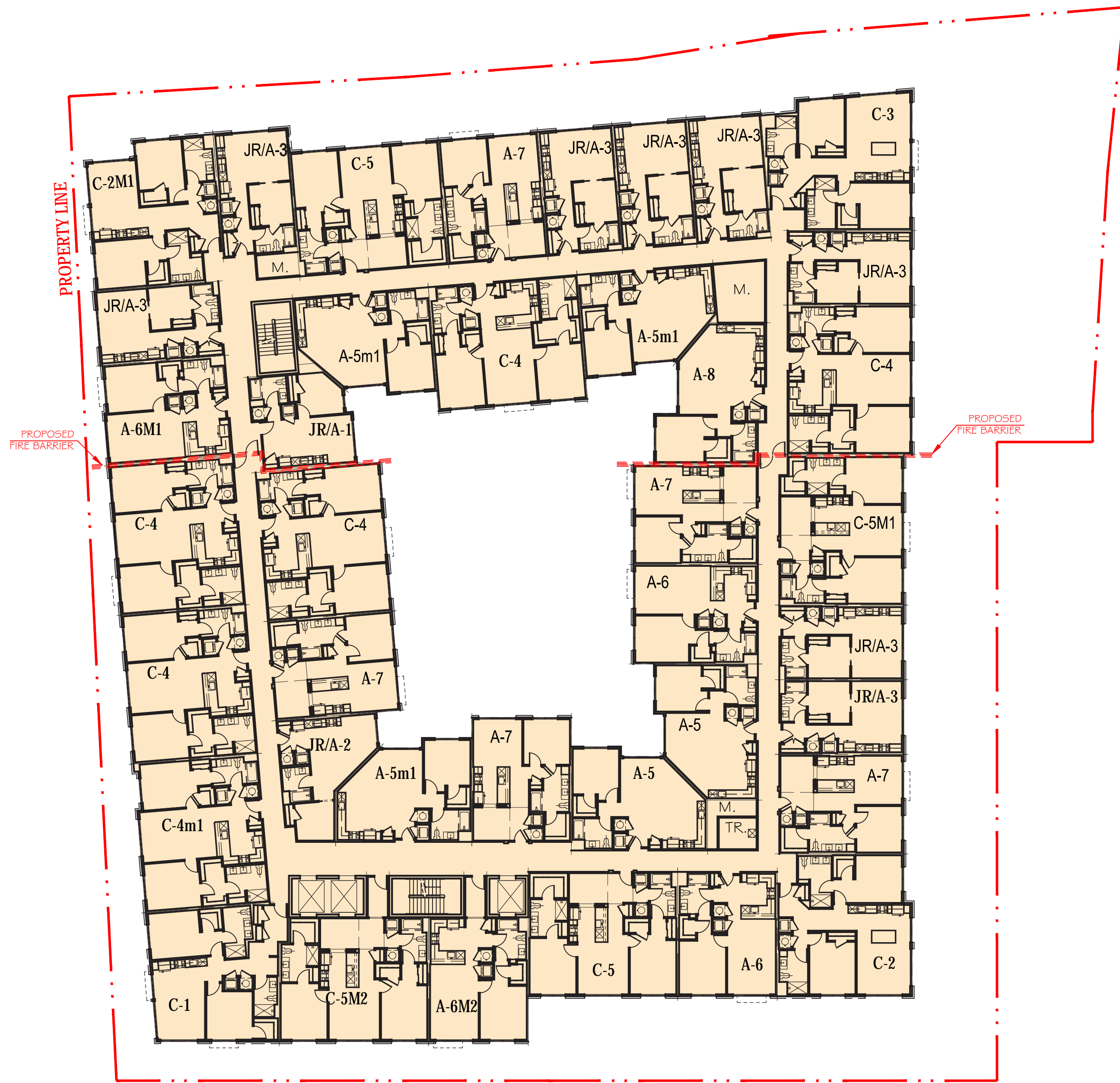


GARAGE FLOOR PLAN (G2)
 RESIDENTIAL AREA = 3,626 GSF
 GARAGE AREA = 22,617 GSF
 OFFICE AREA = 7,430 GSF

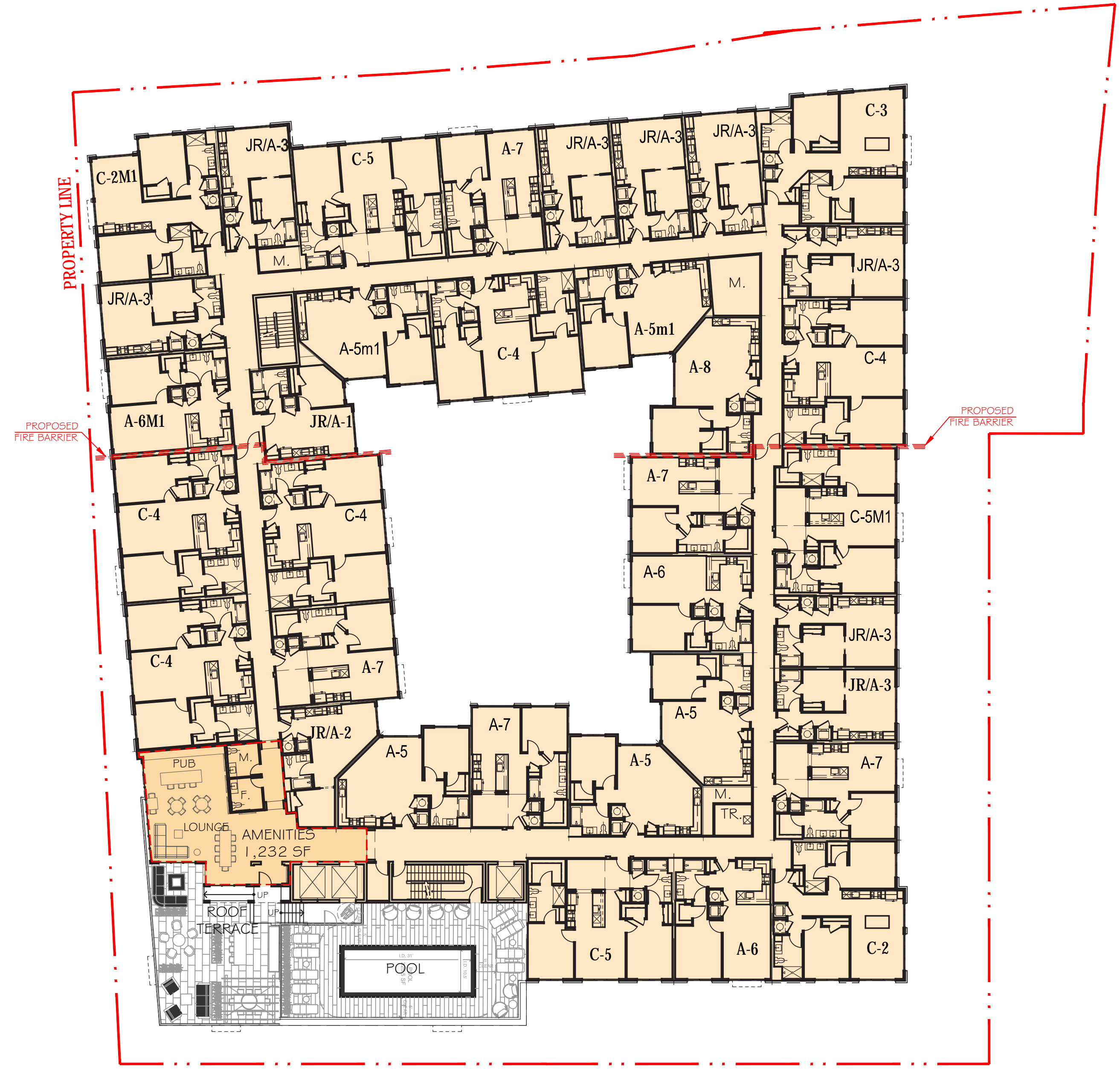


RESIDENTIAL FLOOR PLAN (R1)
 RESIDENTIAL AREA = 35,609 GSF

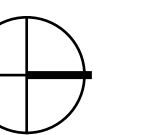


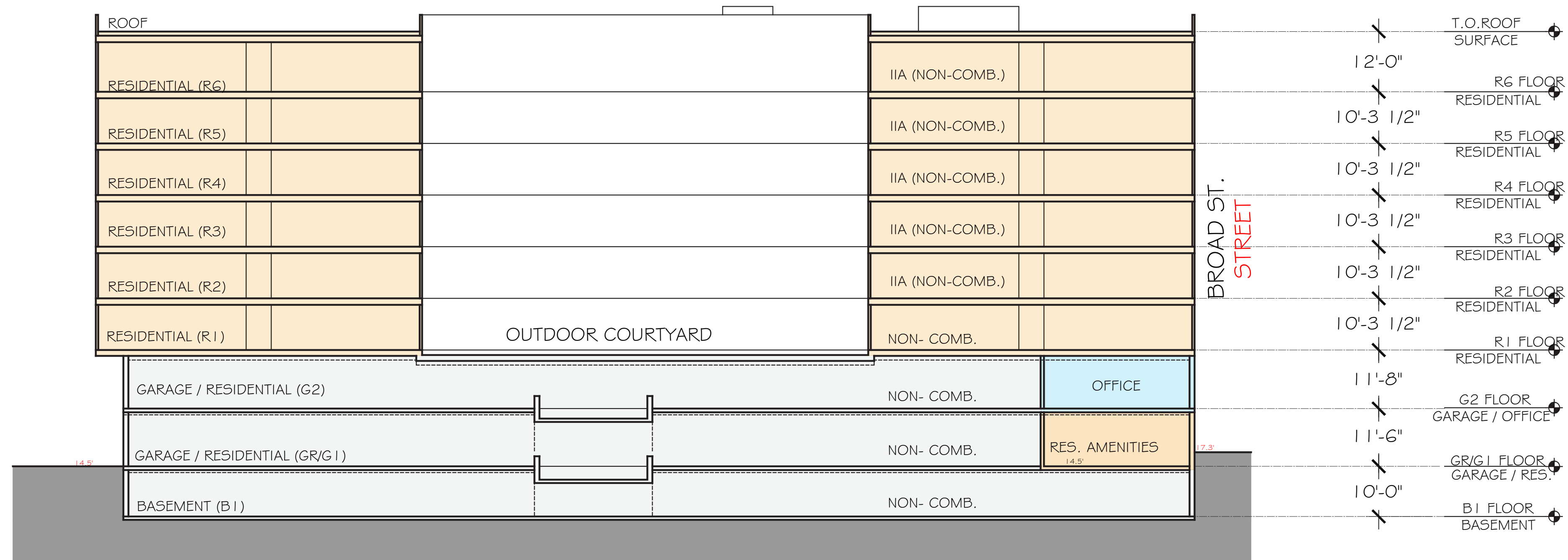


TYPICAL FLOOR PLAN (R2-R5)
RESIDENTIAL AREA = 35,526 GSF

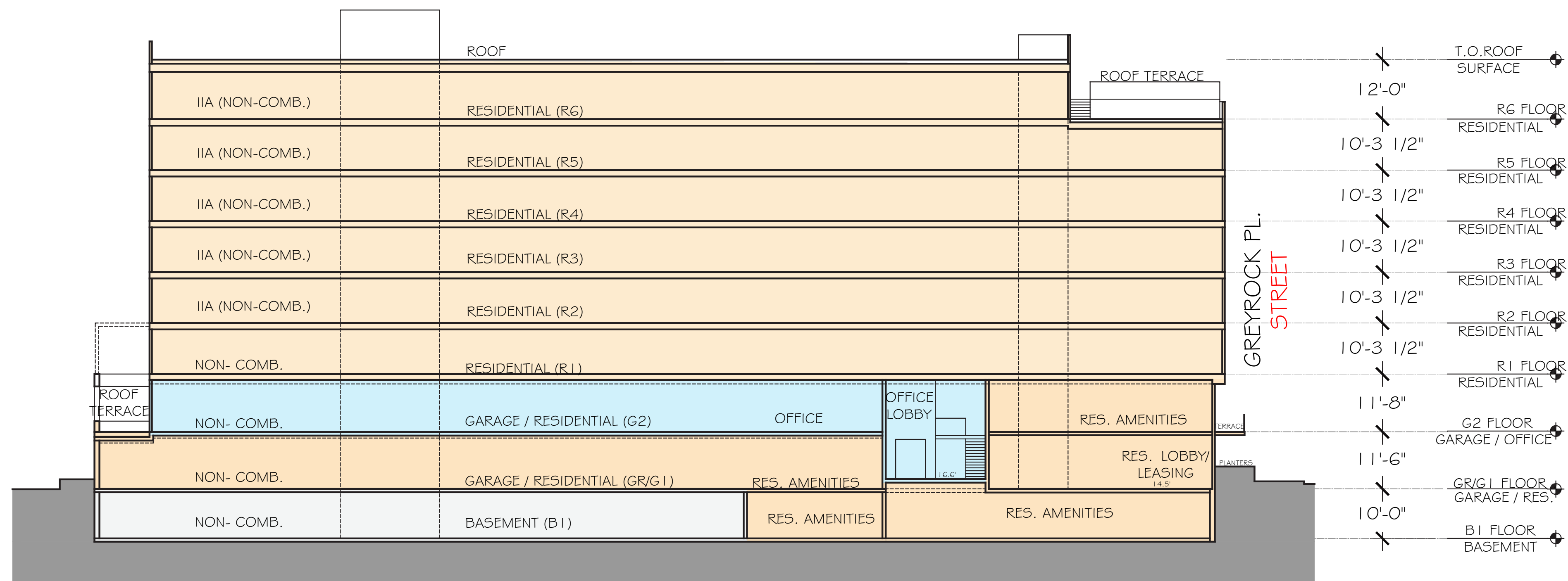


RESIDENTIAL FLOOR PLAN (R6)
RESIDENTIAL AREA = 32,568 GSF

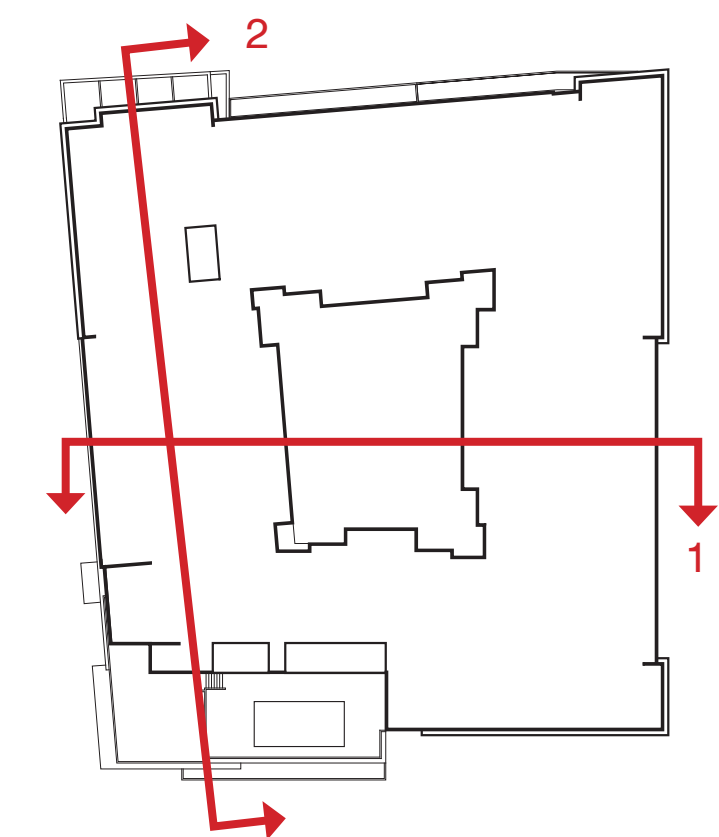




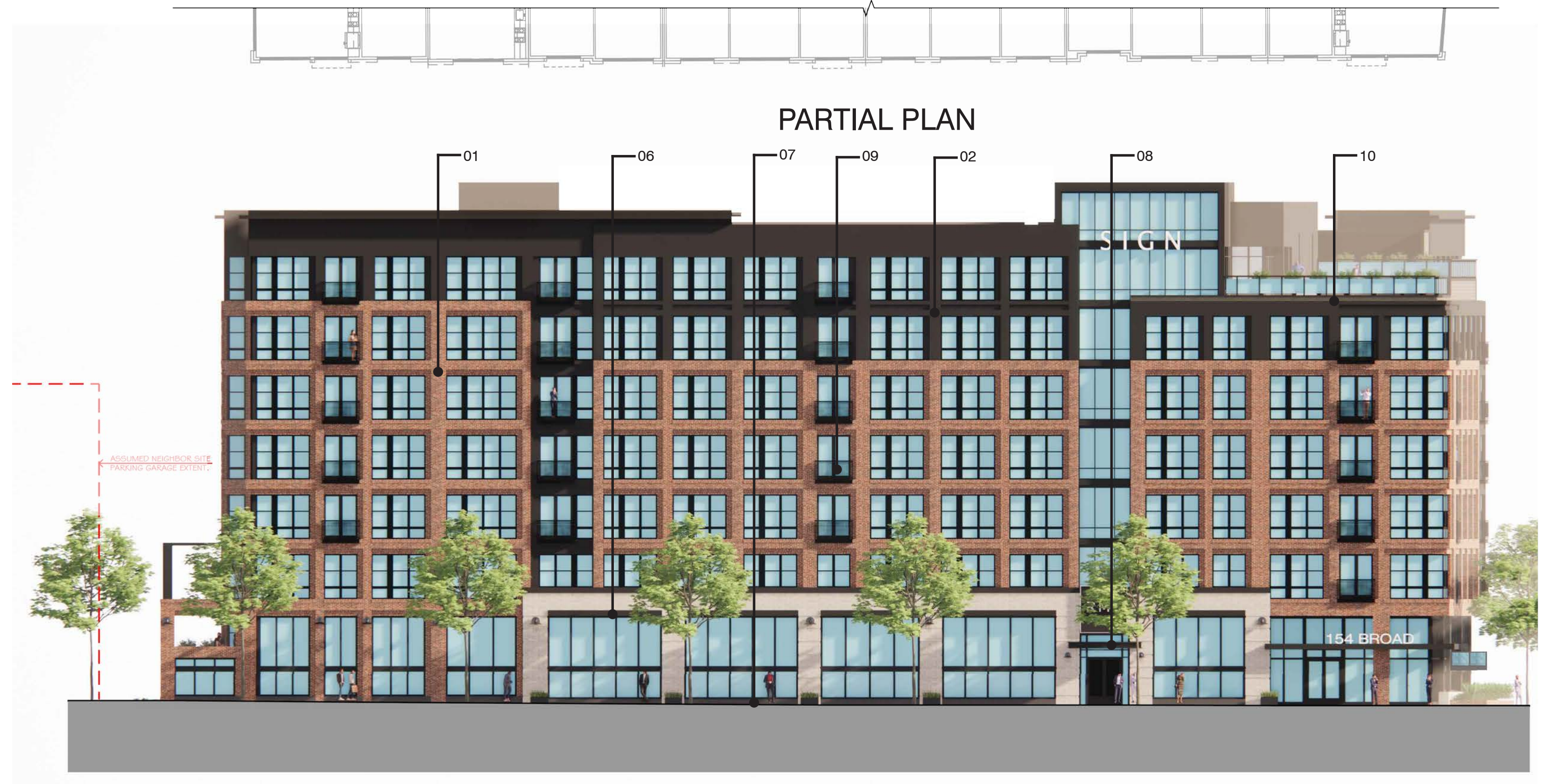
BUILDING SECTION 1



BUILDING SECTION 2

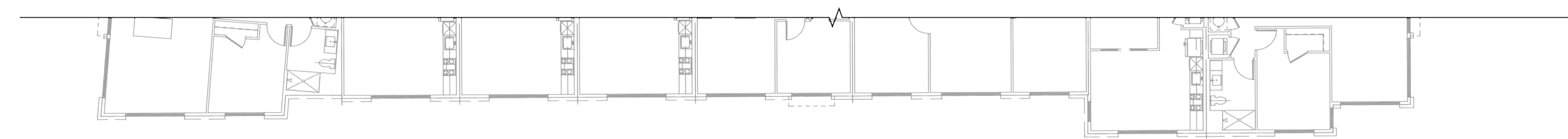


KEY PLAN



BUILDING ELEVATION 1

12'-0"	T.O. ROOF SURFACE
10'-3 1/2"	R6 FLOOR RESIDENTIAL
10'-3 1/2"	R5 FLOOR RESIDENTIAL
10'-3 1/2"	R4 FLOOR RESIDENTIAL
10'-3 1/2"	R3 FLOOR RESIDENTIAL
10'-3 1/2"	R2 FLOOR RESIDENTIAL
10'-3 1/2"	R1 FLOOR RESIDENTIAL
11'-8"	G2 FLOOR GARAGE / OFFICE
11'-6"	GR/G1 FLOOR GARAGE / RES.



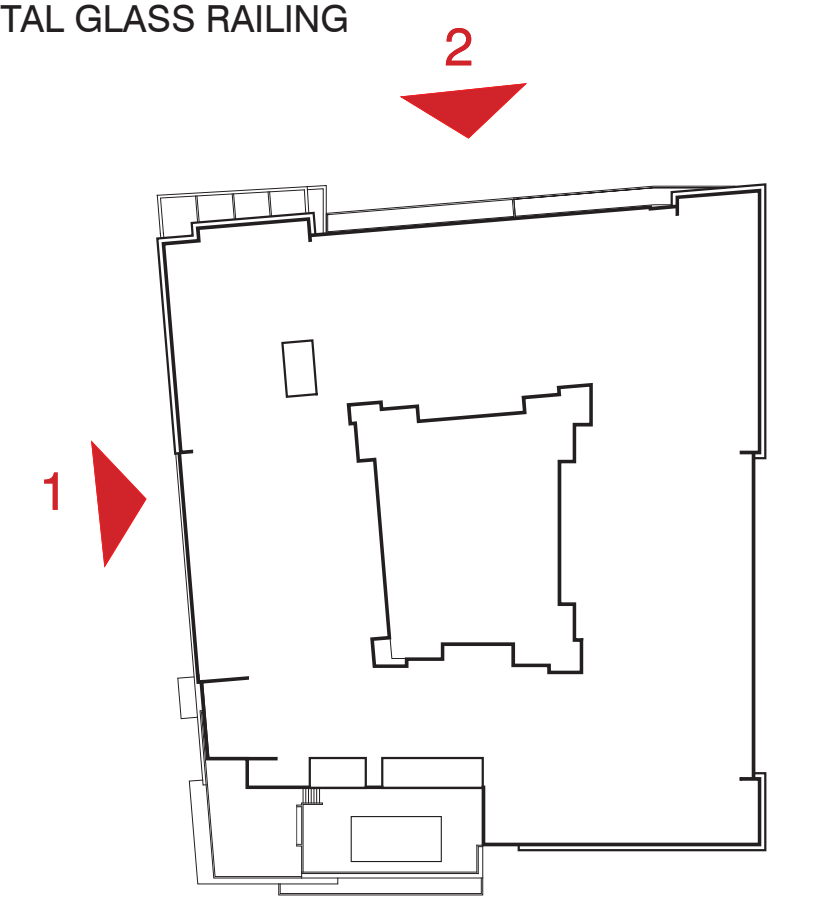
PARTIAL PLAN



BUILDING ELEVATION 2

12'-0"	T.O. ROOF SURFACE
10'-3 1/2"	R6 FLOOR RESIDENTIAL
10'-3 1/2"	R5 FLOOR RESIDENTIAL
10'-3 1/2"	R4 FLOOR RESIDENTIAL
10'-3 1/2"	R3 FLOOR RESIDENTIAL
10'-3 1/2"	R2 FLOOR RESIDENTIAL
10'-3 1/2"	R1 FLOOR RESIDENTIAL
11'-8"	G2 FLOOR GARAGE / OFFICE
11'-6"	GR/G1 FLOOR GARAGE / RES.

- MATERIAL LEGEND**
- 01 BRICK - RED
 - 02 FIBER CEMENT PANEL - DARK GREY
 - 03 FIBER CEMENT PANEL - MEDIUM GREY
 - 04 FIBER CEMENT LAP SIDING - DARK GREY/SMOOTH
 - 05 FIBER CEMENT LAP SIDING - MEDIUM GREY/SMOOTH
 - 06 ARCHITECTURAL STONE - LIGHT BEIGE
 - 07 GRANITE - ABSOLUTE BLACK
 - 08 METAL ACCENT - DARK GREY
 - 09 WIRE MESH RAILING
 - 10 METAL GLASS RAILING



KEY PLAN

*NOTE: DECORATIVE LIGHTING, SIGNAGE AND LANDSCAPE TREE'S SHOWN FOR ILLUSTRATIVE PURPOSES ONLY. PRODUCTS AND MANUFACTURERS LISTED ARE SUBJECT TO CHANGE AND/OR TO BE SUBSTITUTED WITH EQUIVALENT AND COMPATIBLE OPTIONS.



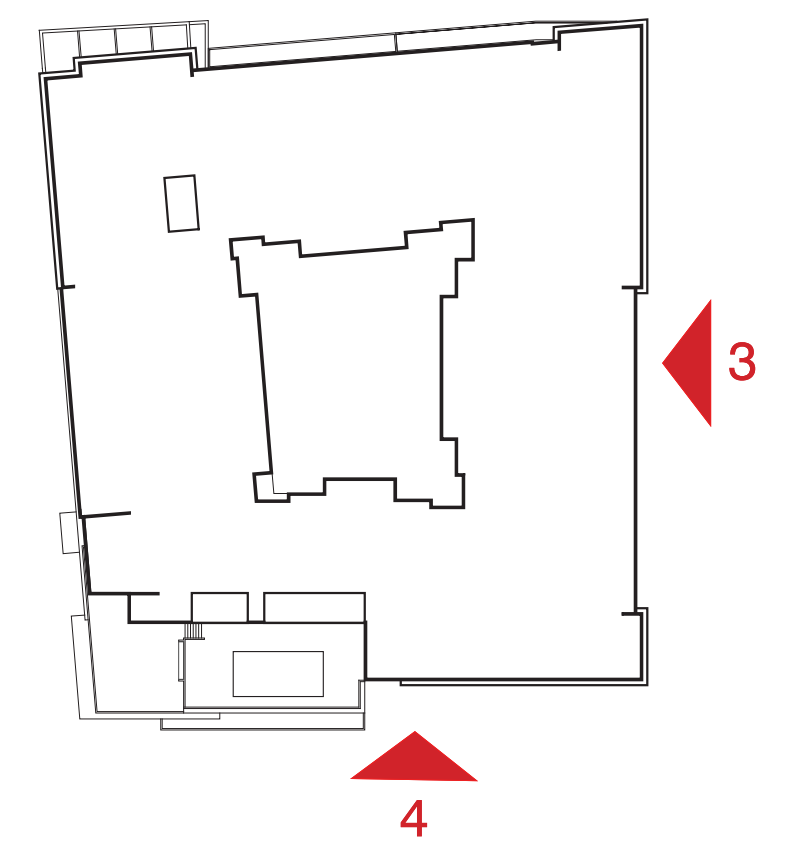
BUILDING ELEVATION 3



BUILDING ELEVATION 4

MATERIAL LEGEND

- 01 BRICK - RED
- 02 FIBER CEMENT PANEL - DARK GREY
- 03 FIBER CEMENT PANEL - MEDIUM GREY
- 04 FIBER CEMENT LAP SIDING - DARK GREY/SMOOTH
- 05 FIBER CEMENT LAP SIDING - MEDIUM GREY/SMOOTH
- 06 ARCHITECTURAL STONE - LIGHT BEIGE
- 07 GRANITE - ABSOLUTE BLACK
- 08 METAL ACCENT - DARK GREY
- 09 WIRE MESH RAILING
- 10 METAL GLASS RAILING



KEY PLAN

*NOTE: DECORATIVE LIGHTING, SIGNAGE AND LANDSCAPE TREE'S SHOWN FOR ILLUSTRATIVE PURPOSES ONLY. PRODUCTS AND MANUFACTURERS LISTED ARE SUBJECT TO CHANGE AND/OR TO BE SUBSTITUTED WITH EQUIVALENT AND COMPATIBLE OPTIONS.



8521 LEESBURG PIKE, SEVENTH FLOOR, VIENNA, VA 22182
P: 571.830.1800 | F: 571.830.1801 | WWW.LESSARDDDESIGN.COM

BUILDING ELEVATIONS

SITE PLAN SUBMISSION

©2021 LESSARD DESIGN INC. EXPRESSLY RESERVES ITS COMMON LAW COPYRIGHT AND OTHER PROPERTY RIGHTS IN THESE PLANS. THESE PLANS ARE NOT TO BE REPRODUCED, CHANGED OR COPIED IN ANY OTHER FORM OR MANNER WHATSOEVER, NOR ARE THEY TO BE ASSIGNED TO ANY THIRD PARTY, WITHOUT FIRST OBTAINING THE EXPRESS WRITTEN PERMISSION AND CONSENT OF LESSARD DESIGN INC.

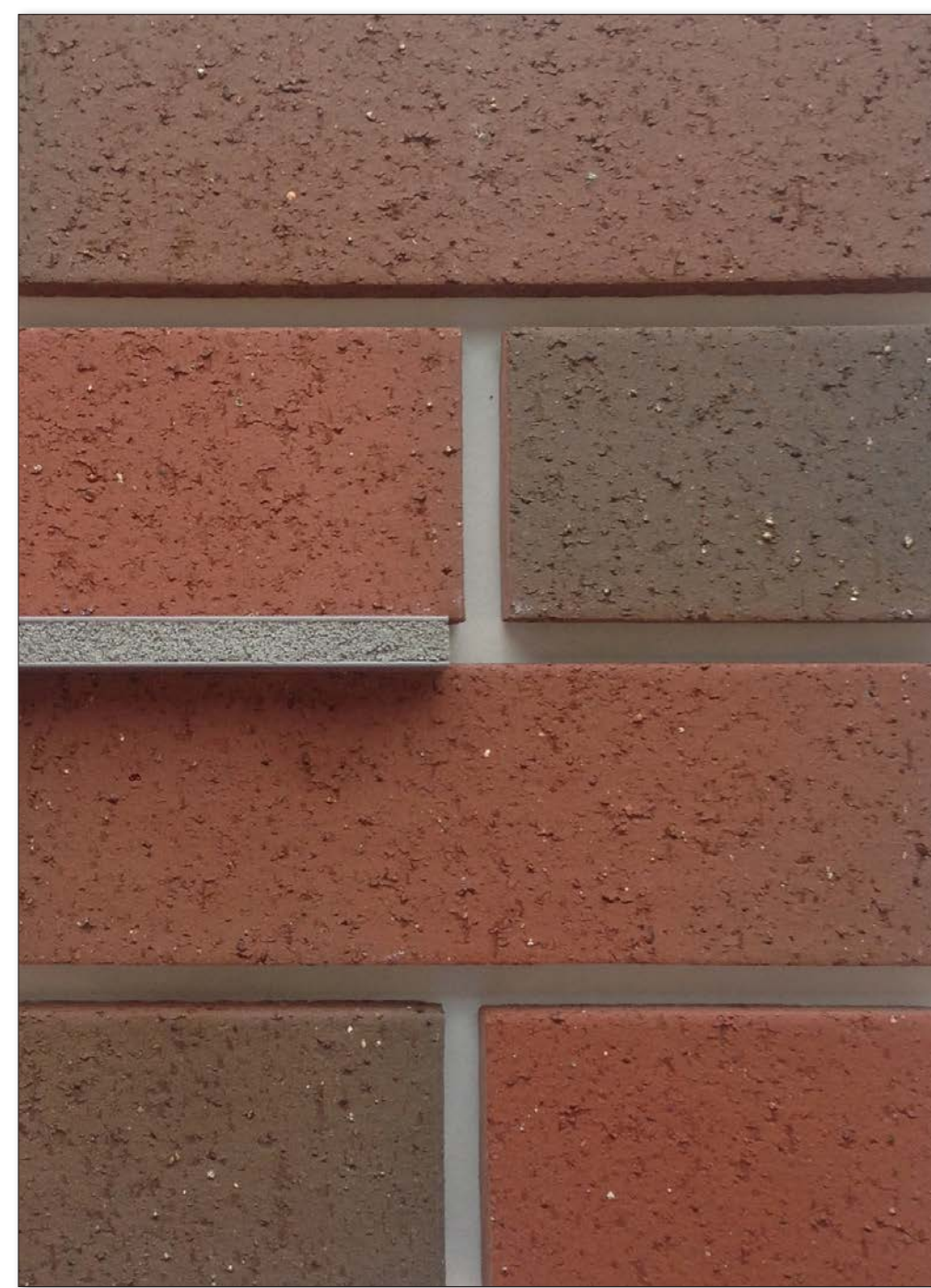
BROAD ST. & GREYROCK PL.

STAMFORD, CT
RMS COMPANIES

REV 2 JUNE 15, 2021
REV 1 MAY 10, 2021
APR 09, 2021
RMS.007A

A.07

0' 8' 16' 32'
SCALE: 1/16" = 1'-0" (@ 22"x34")



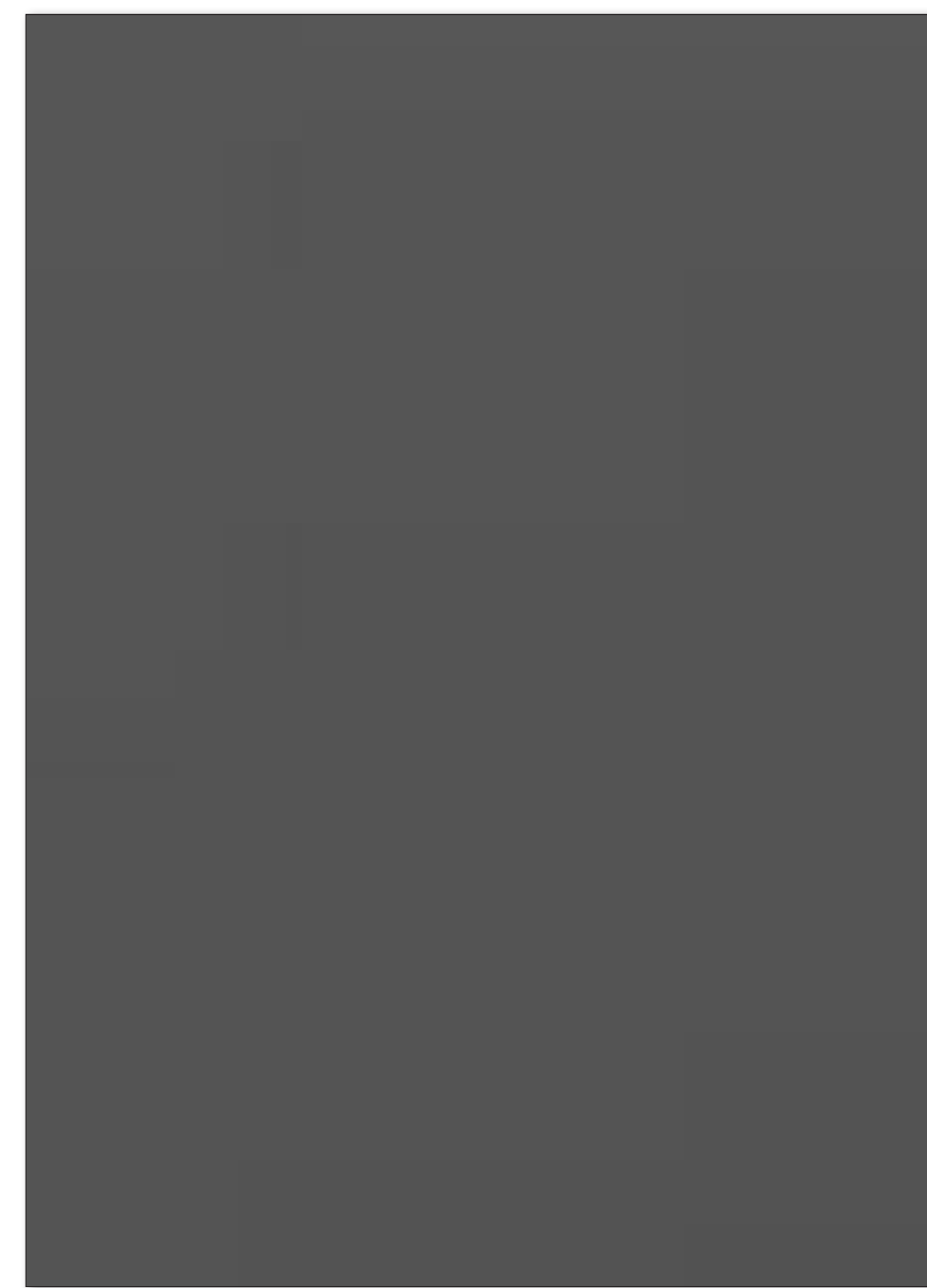
01

BRICK
RED



02

FIBER CEMENT PANEL
DARK GREY



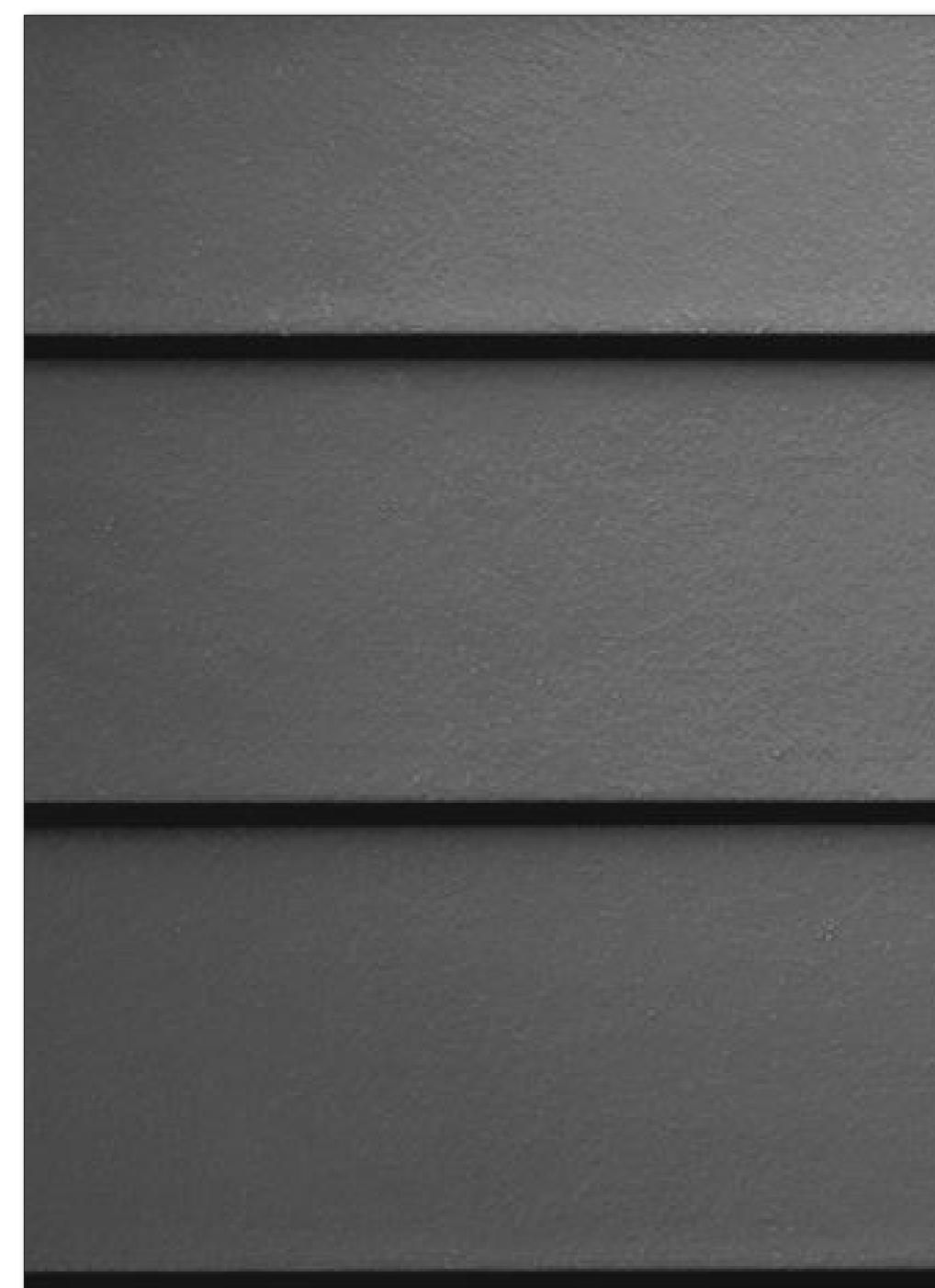
03

FIBER CEMENT PANEL
MEDIUM GREY



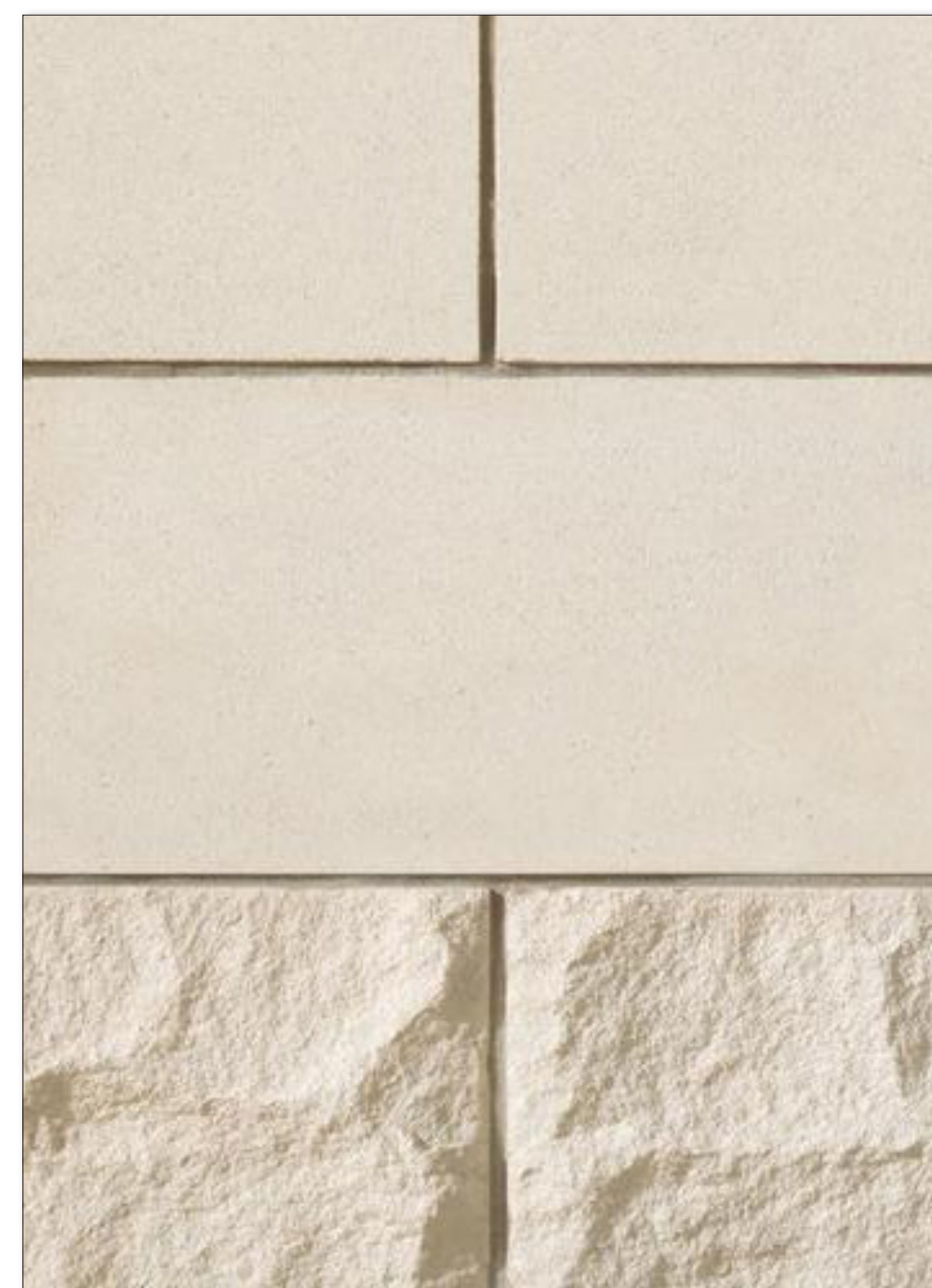
04

**FIBER CEMENT
LAP SIDING**
DARK GREY/SMOOTH



05

**FIBER CEMENT
LAP SIDING**
MEDIUM GREY/SMOOTH



06

ARCHITECTURAL STONE
LIGHT BEIGE



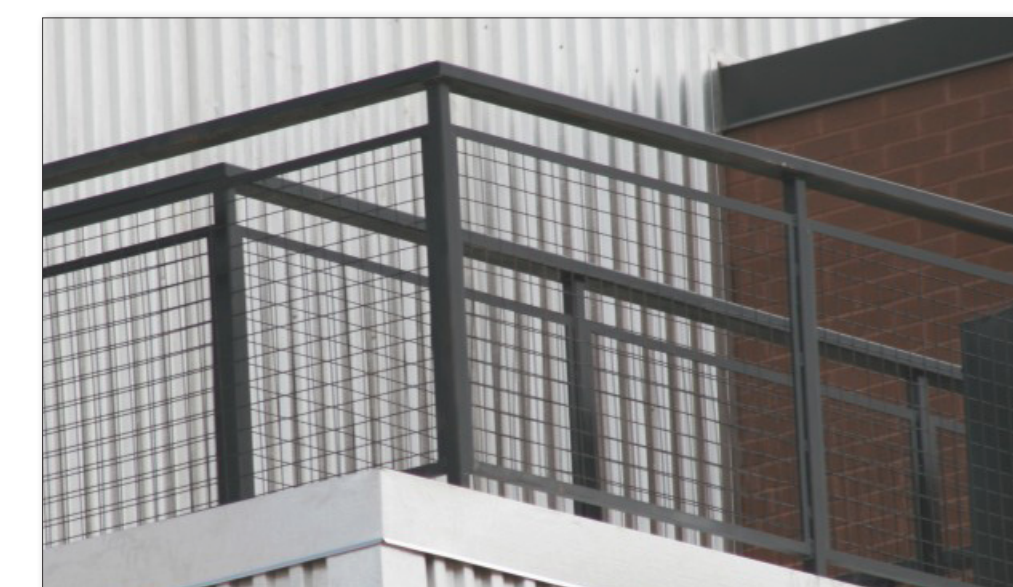
07

GRANITE
ABSOLUTE BLACK



08

METAL ACCENT
DARK GREY



09

WIRE MESH RAILING



10

METAL GLASS RAILING

*NOTE: MATERIALS ARE SUBJECT TO CHANGE AND/OR TO BE SUBSTITUTED WITH EQUIVALENT AND COMPATIBLE OPTIONS.