

**LEGEND**

- NOTE 1: REMOVE DRYWALL/NON-ASBESTOS TAPING COMPOUND BELOW CLEARSTORY WINDOW, IN VICINITY OF YELLOW DUCT, AND AT WATER DAMAGED SOFFIT  
CLEAN AND DISINFECT AREA
- NOTE 2: REMOVE DRYWALL/NON-ASBESTOS TAPING COMPOUND FROM FLOOR TO TWO FEET UP  
CLEAN AND DISINFECT AREA

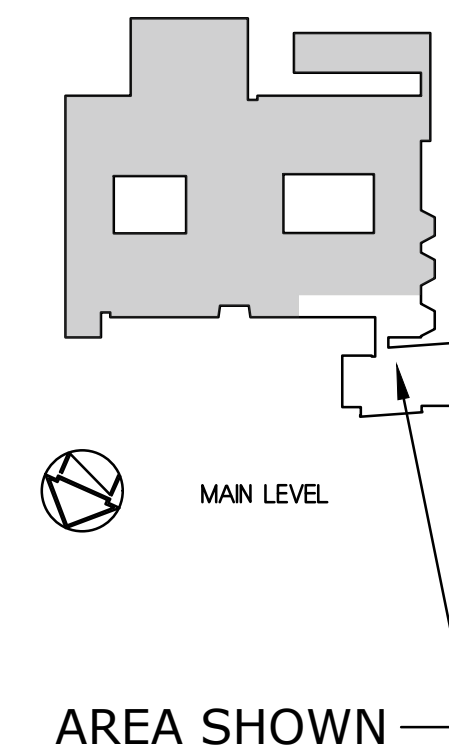
**GENERAL NOTES**

- NON-ASBESTOS DRYWALL REMOVAL WORK SHALL BE CONDUCTED WITHIN ONE LAYER NEGATIVE PRESSURE CONTAINMENTS
- OPENINGS SHALL BE COVERED WITH POLYETHYLENE SHEETING ONCE SUCCESSFUL VISUAL INSPECTION CONDUCTED

**Northeast Elementary School**

City of Stamford

Stamford, CT



MARK	DATE	DESCRIPTION

PROJECT NO:	S2087
DATE:	05/03/2019
FILE:	Northeast Mold Remediation.dwg
DRAWN BY:	WAC/BG
CHECKED:	KM
APPROVED:	KM

**AREA 3A**

SCALE: NOT TO SCALE

**FIGURE 3.4**