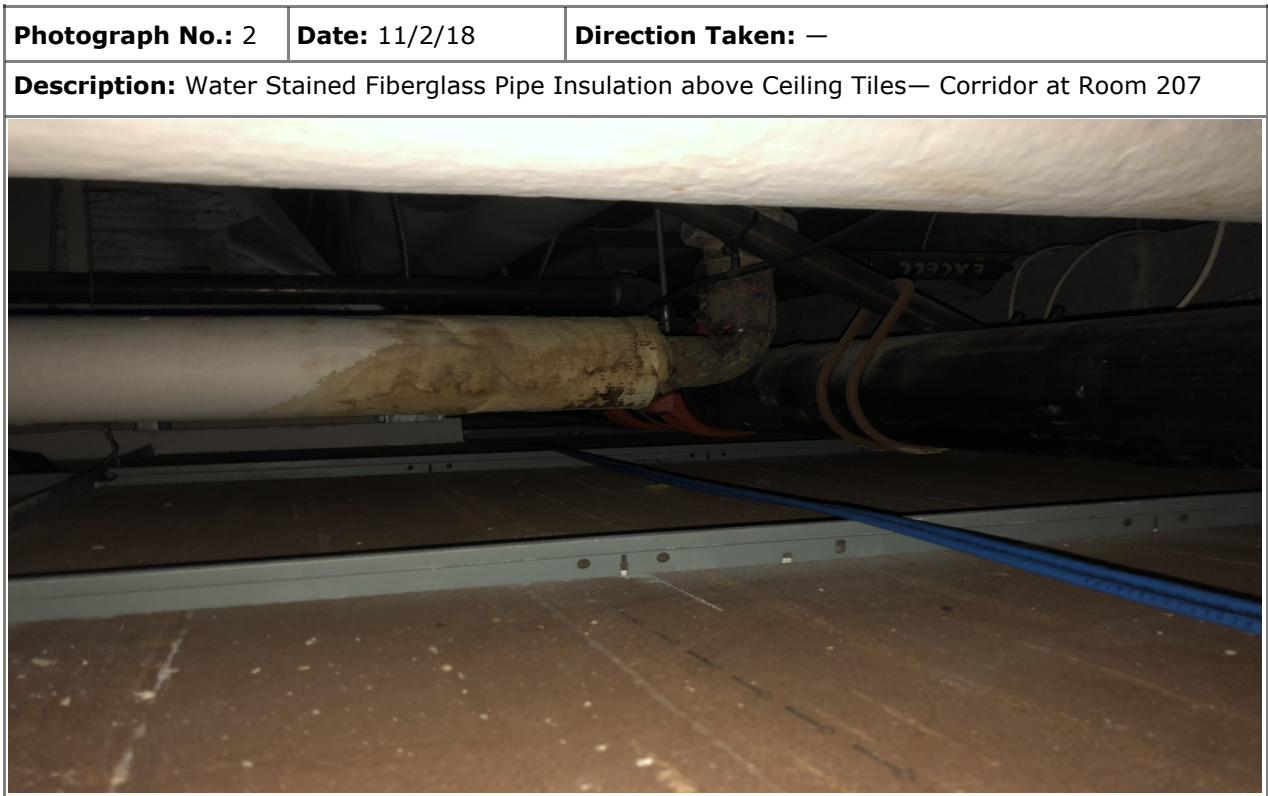
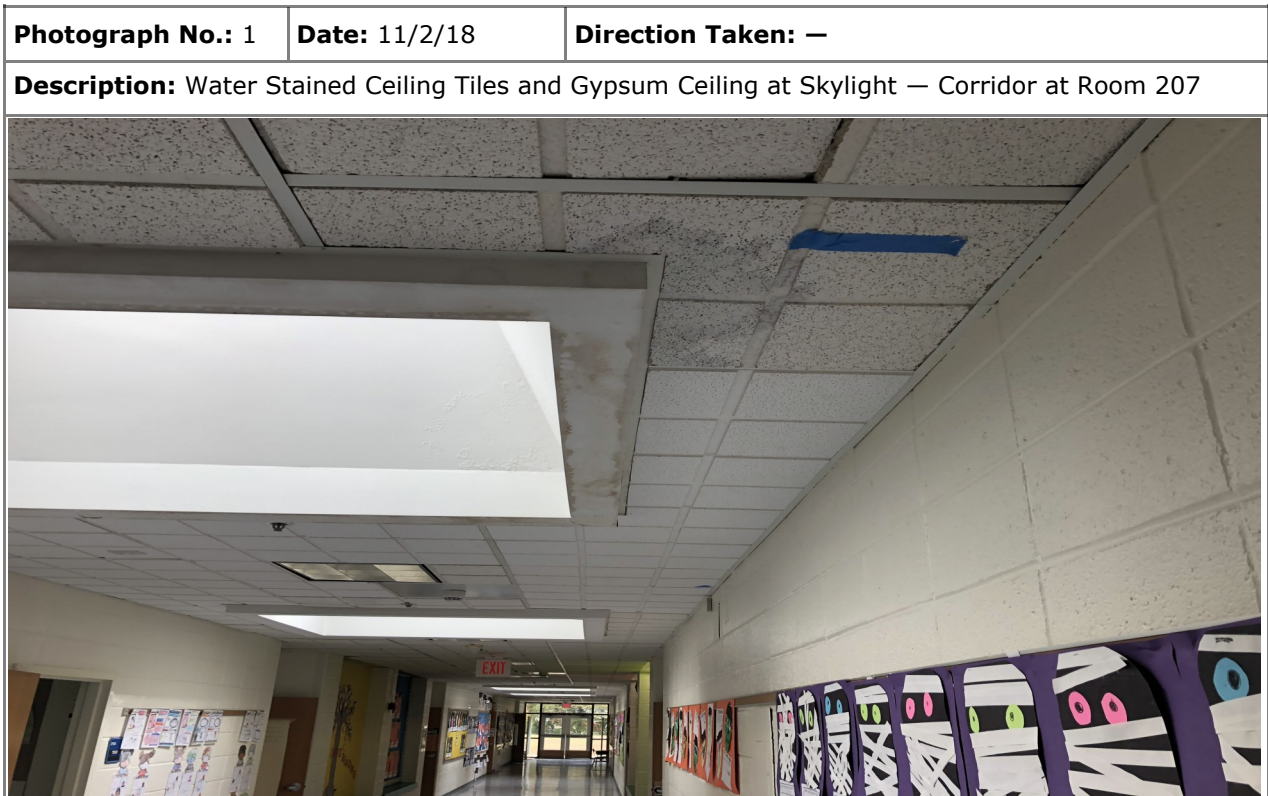


# Initial Assessment—Photographic Log

**Client:** City of Stamford Mold Task Force

**Job Number:** S-2087-033

**Site:** Newfield Elementary School

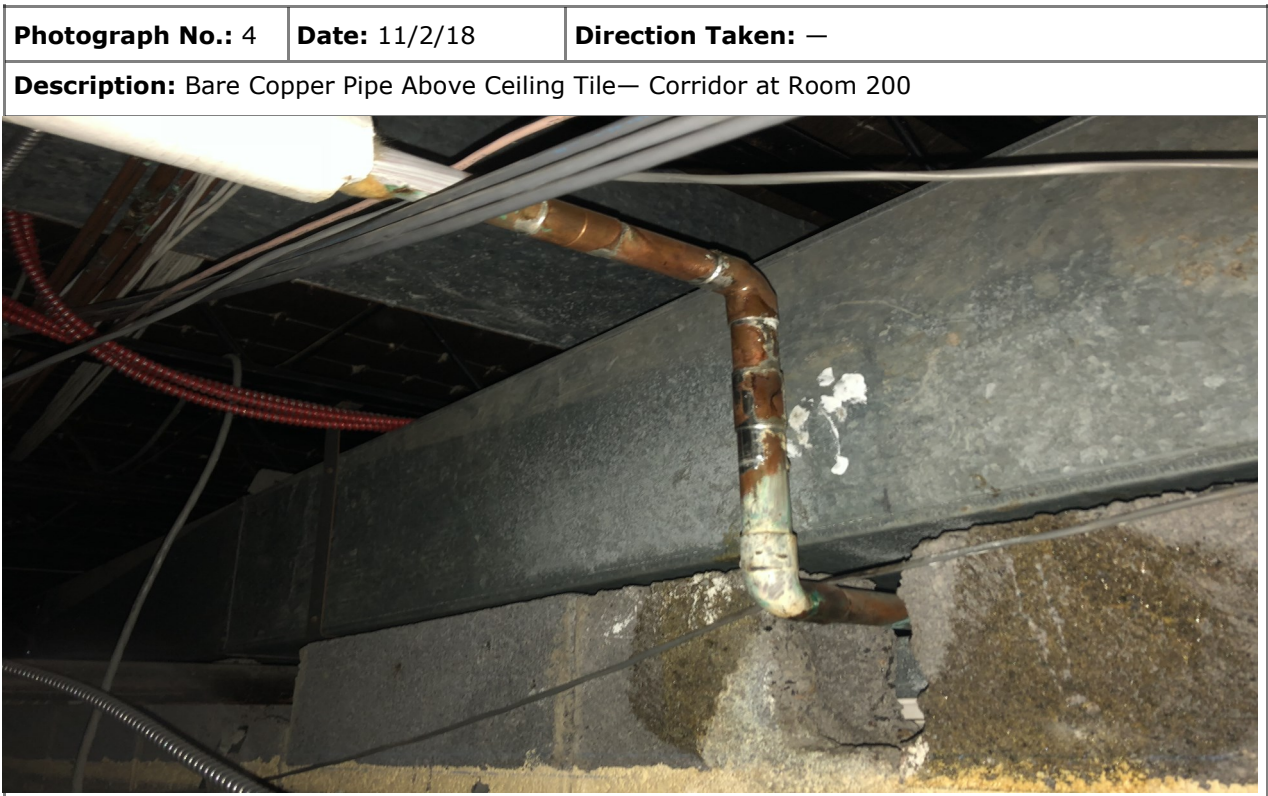
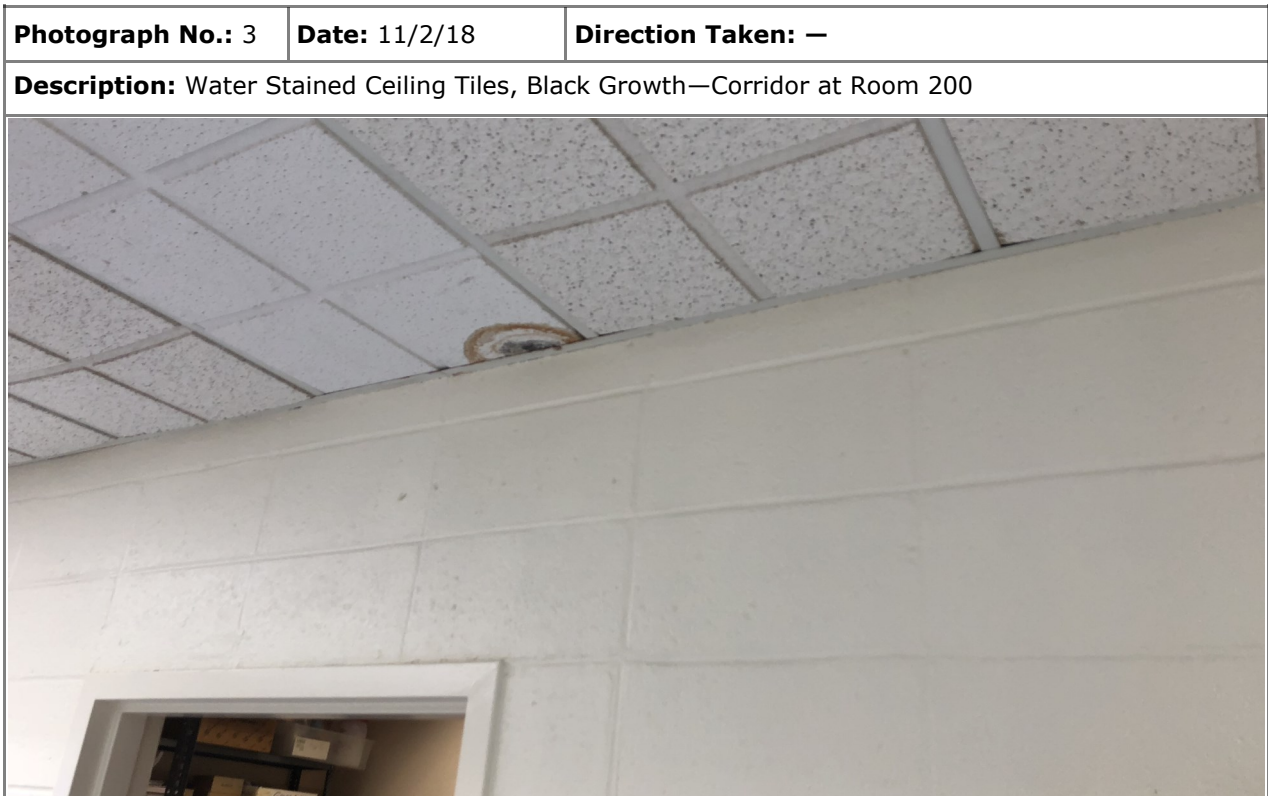


# Initial Assessment—Photographic Log

**Client:** City of Stamford Mold Task Force

**Job Number:** S-2087-033

**Site:** Newfield Elementary School

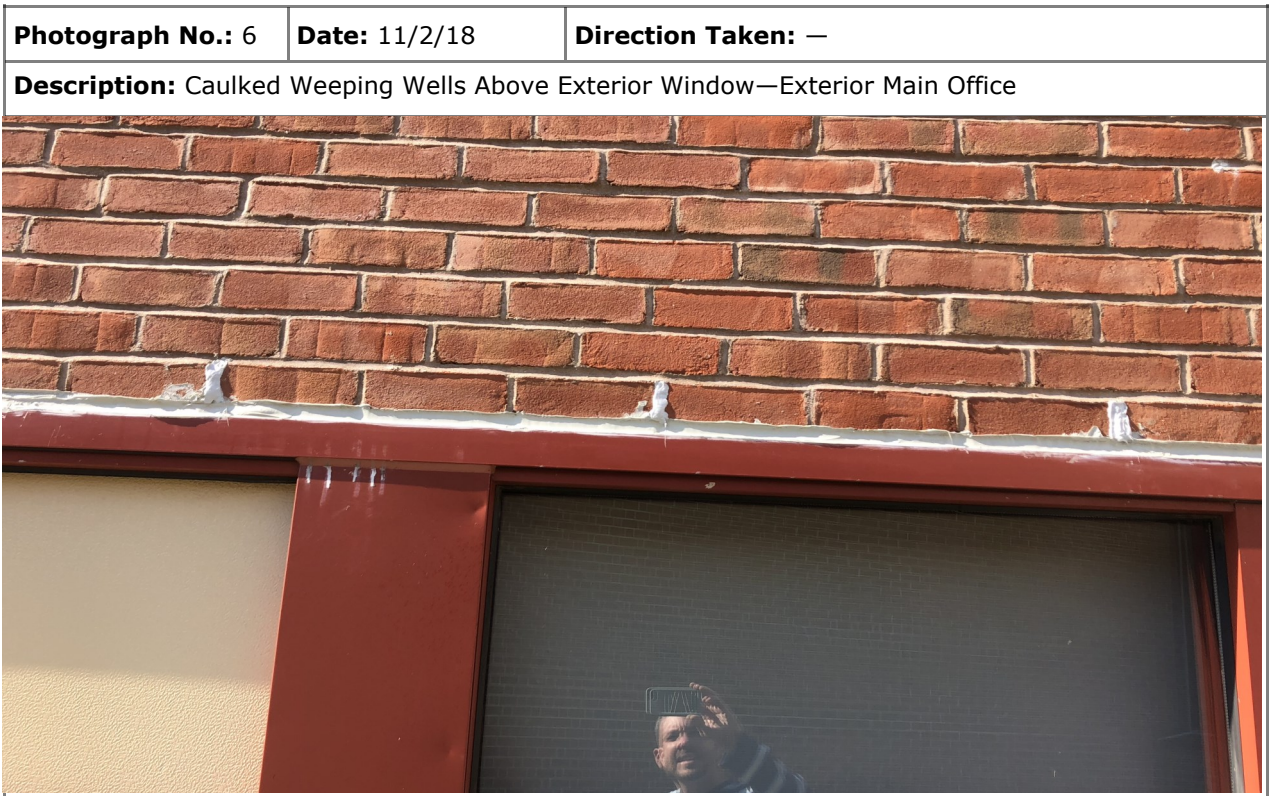


# Initial Assessment—Photographic Log

**Client:** City of Stamford Mold Task Force

**Job Number:** S-2087-033

**Site:** Newfield Elementary School



# Initial Assessment—Photographic Log

**Client:** City of Stamford Mold Task Force

**Job Number:** S-2087-033

**Site:** Newfield Elementary School

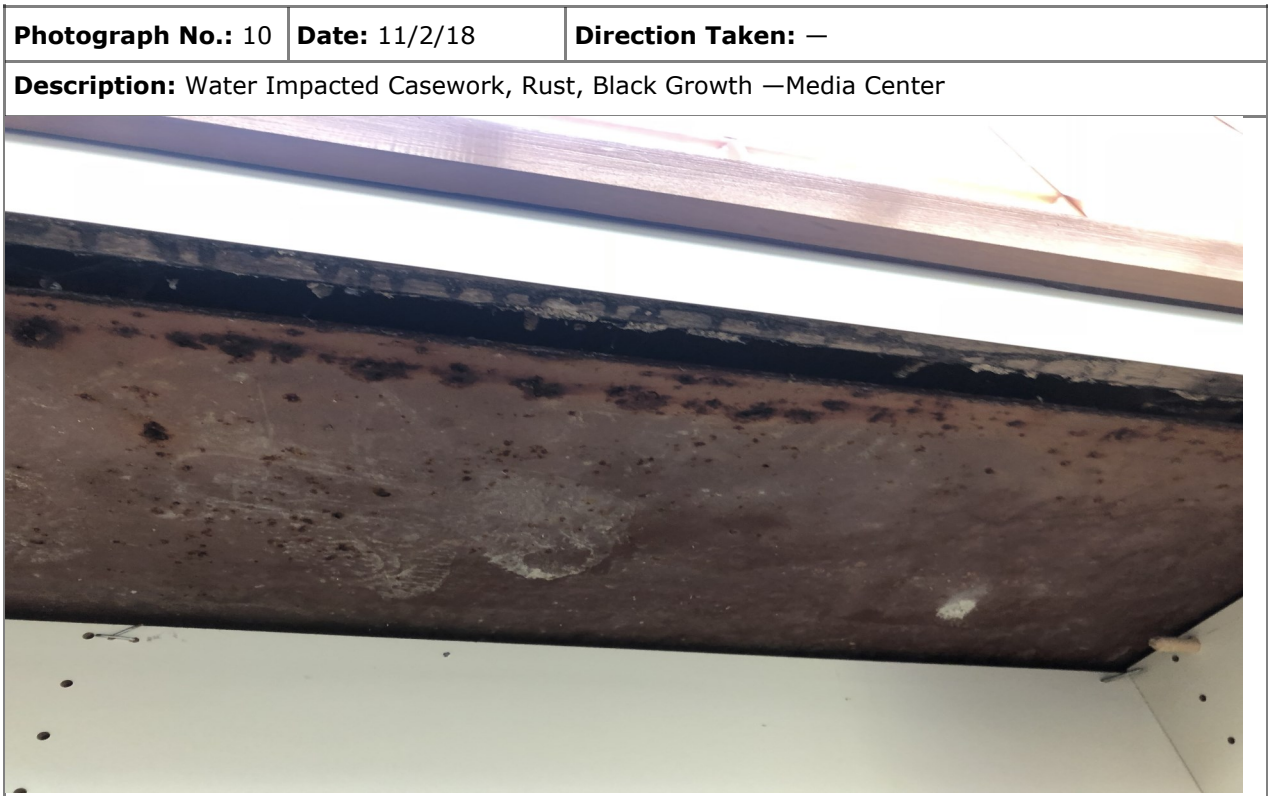


# Initial Assessment—Photographic Log

**Client:** City of Stamford Mold Task Force

**Job Number:** S-2087-033

**Site:** Newfield Elementary School



# Initial Assessment—Photographic Log

**Client:** City of Stamford Mold Task Force

**Job Number:** S-2087-033

**Site:** Newfield Elementary School

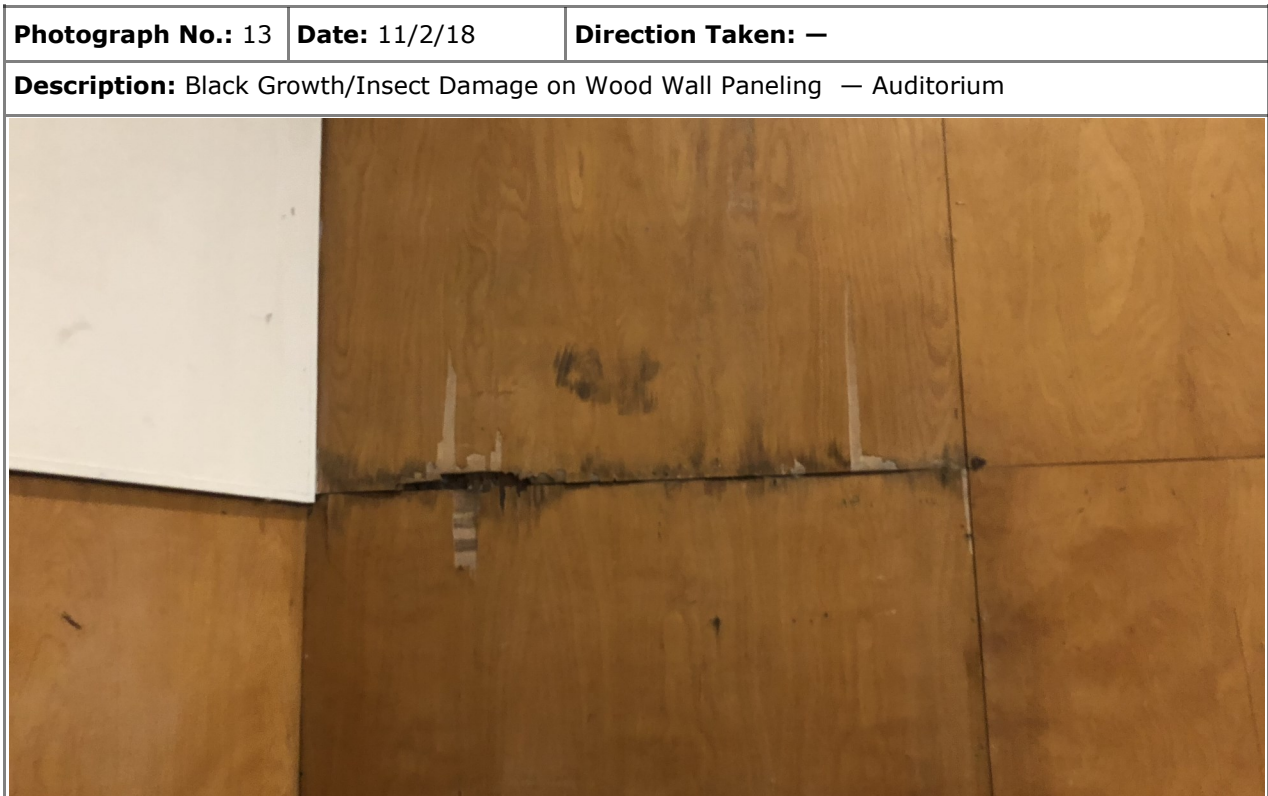


# Initial Assessment—Photographic Log

**Client:** City of Stamford Mold Task Force

**Job Number:** S-2087-033

**Site:** Newfield Elementary School



# Initial Assessment—Photographic Log

**Client:** City of Stamford Mold Task Force

**Job Number:** S-2087-033

**Site:** Newfield Elementary School

<b>Photograph No.:</b> 15	<b>Date:</b> 11/2/18	<b>Direction Taken:</b> —
<b>Description:</b> Limited Deteriorated Roof Caulking/Flashing — Roof Room 200		

<b>Photograph No.:</b> 16	<b>Date:</b> 11/2/18	<b>Direction Taken:</b> —
<b>Description:</b> Limited Deteriorated Roof Caulking/Flashing—Roof Room 204		

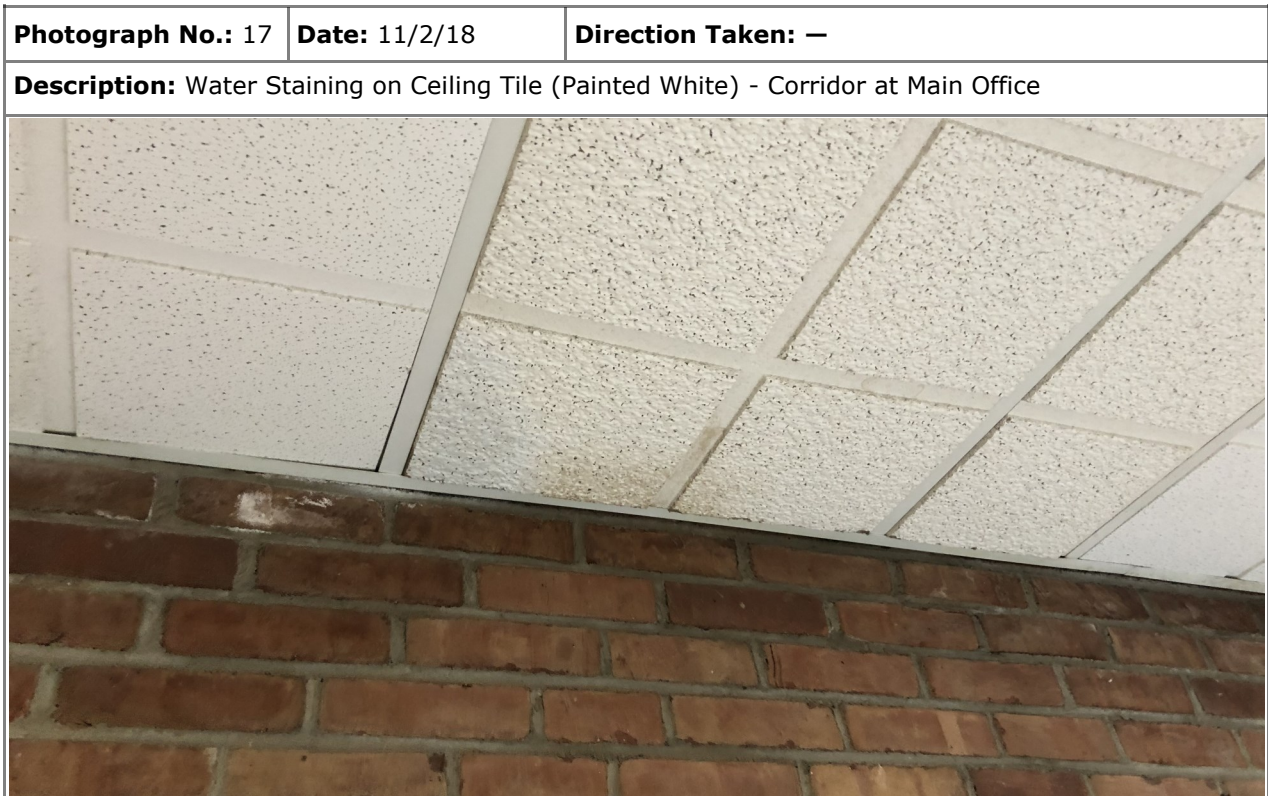


# Initial Assessment—Photographic Log

**Client:** City of Stamford Mold Task Force

**Job Number:** S-2087-033

**Site:** Newfield Elementary School





# Initial Assessment—Photographic Log

**Client:** City of Stamford Mold Task Force

**Job Number:** S-2087-033

**Site:** Newfield Elementary School

<b>Photograph No.:</b> 19	<b>Date:</b> 11/5/18	<b>Direction Taken:</b> —
<b>Description:</b> Mold Growth at Wall—Gymnasium		
		

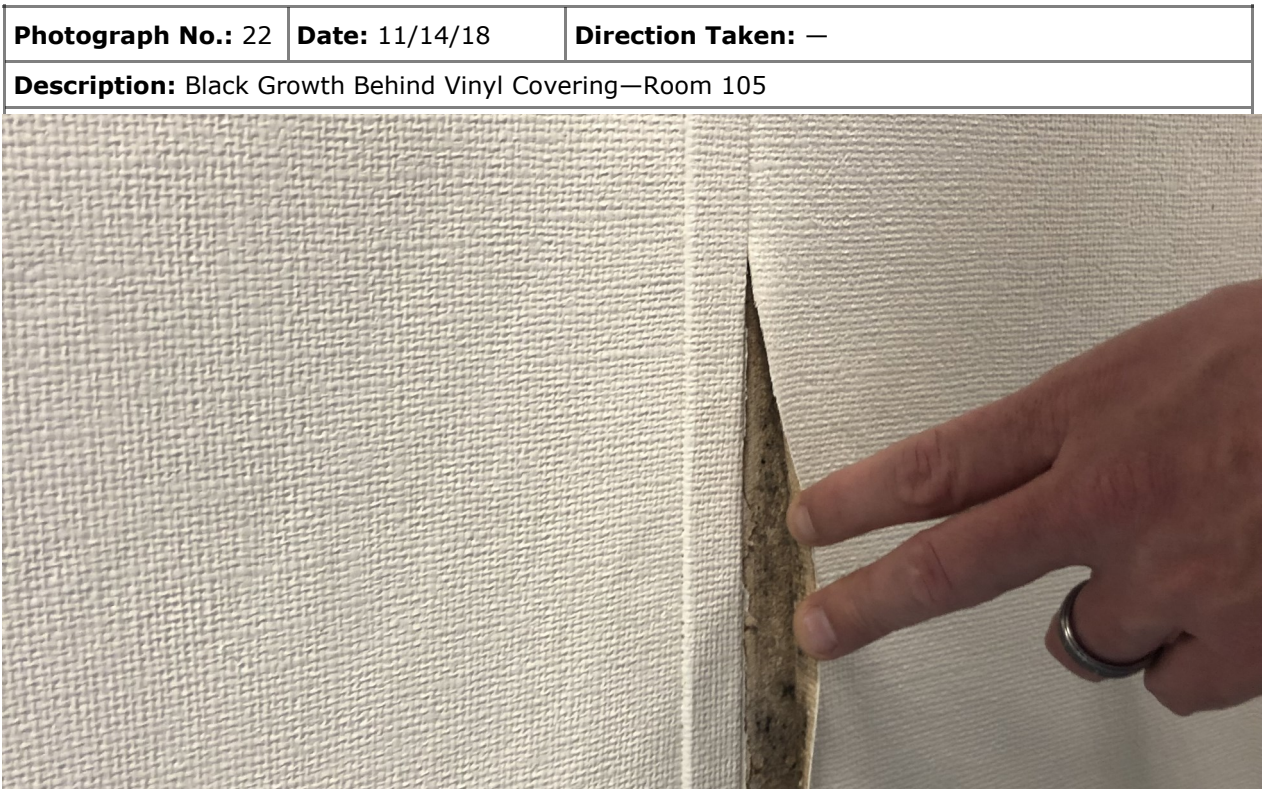
<b>Photograph No.:</b> 20	<b>Date:</b> 11/5/18	<b>Direction Taken:</b> —
<b>Description:</b> Water Staining on Drywall at Roof Drain - Gymnasium		
		

# Initial Assessment—Photographic Log

**Client:** City of Stamford Mold Task Force

**Job Number:** S-2087-033

**Site:** Newfield Elementary School



# Initial Assessment—Photographic Log

**Client:** City of Stamford Mold Task Force

**Job Number:** S-2087-033

**Site:** Newfield Elementary School



# Initial Assessment—Photographic Log

**Client:** City of Stamford Mold Task Force

**Job Number:** S-2087-033

**Site:** Newfield Elementary School

