



**Tighe&Bond**

**Newfield Elementary School  
Door Replacement Project**

**Hazardous Building  
Materials Assessment**

Prepared For:

**City of Stamford**

December 2018  
Revised July 2019

**Cover Page**

**Section 1 Introduction**

1.1 Assessment Summary .....1-1

**Section 2 Assessment Protocols**

2.1 Asbestos-Containing Materials .....2-2  
2.2 Lead-Based Paint (LBP).....2-3  
2.3 Polychlorinated Biphenyl-Containing Building Materials .....2-3

**Section 3 Findings**

3.1 Asbestos-Containing Materials .....3-1  
3.2 Lead-Based Paint .....3-1  
3.3 PCB-Containing Building Materials .....3-2

**Section 4 Assessment Limitations**

**Tables**

1 Summary of Suspect Asbestos-Containing Materials  
2 Summary of Lead Paint Materials  
3 Summary of PCB-Containing Building Materials

**Figure**

1 Suspect Asbestos and PCB Sample Locations

**Appendices**

A Inspector Licenses and EPA Accreditations  
B Asbestos Laboratory Results and Chain-of-Custody Forms  
C PCB Laboratory Results and Chain-of-Custody Forms

# **Section 1**

## **Introduction**

Tighe & Bond, Inc. (Tighe & Bond) was retained by the City of Stamford (the "Client") to complete a Hazardous Building Materials Assessment (the "Assessment") of the Newfield Elementary School located at 345 Pepper Ridge Road in Stamford, Connecticut (the "site").

The Assessment was performed on October 10, 2018 and July 12, 2019, by Mr. John R. Hobbins of Tighe and Bond, a Connecticut licensed asbestos inspector. Mr. Hobbins' license and accreditation are included as Appendix A of this report. The Assessment was performed as part of the Door Replacement Project (the "Project") scheduled to be conducted by the Client.

### **1.1 Assessment Summary**

The Assessment at the site was conducted with the understanding that the Client is scheduled to conduct renovations at the site as part of the upcoming Door Replacement Project. The door systems at the site scheduled to be renovated during the Project were included in the Assessment. Door systems not scheduled for renovations and/or upgrades were not included in this Assessment.

The site is an elementary school operated by the City of Stamford. The main school building footprint encompasses approximately 85,000 square feet. Interior construction consists of glazed concrete masonry units (CMU), vinyl tiled floors, and suspended-tiled ceilings. The exterior is brick veneer. The portable classroom building footprint encompasses approximately 8,000 square feet with an interior construction of gypsum walls, suspended-tiled ceilings, and vinyl-tiled floors. The exterior is of wood fiberboard siding.

The Assessment included a visual assessment of suspect hazardous building materials (asbestos, lead-based paint, and polychlorinated biphenyls [PCBs]), physical bulk sampling of suspect asbestos and PCB-containing materials, and non-destructive testing for lead-based paint using an X-Ray Fluorescence (XRF) machine. Asbestos and PCB sample locations are depicted in Figure 1.

## Section 2

# Assessment Protocols

### 2.1 Asbestos-Containing Materials

Prior to any type of building demolition or renovation, a thorough investigation is required to identify and quantify asbestos containing materials (ACM) which may be impacted by the demolition or renovation activities. The survey is required by the United States Environmental Protection Agency (EPA) National Emissions Standard for Hazardous Air Pollutants (NESHAP) regulations (Title 40 CFR, Part 61, Subpart M), State of Connecticut Department of Public Health (CTDPH) Standards for Asbestos Abatement (19a-332a-1 – 19a-332a-23) as well as applicable portions of the Occupational Safety and Health Administration (OSHA) CFR 1926.1101 asbestos in construction regulations.

The assessment included a visual inspection to locate, as far as practical, suspect ACM. The majority of the assessment involved visible and accessible materials. However, Tighe & Bond conducted limited core drilling of doors scheduled for replacement to access and investigate suspect materials that may exist within the doors, such as, fire-proofing insulation. Tighe & Bond did not conduct subsurface investigations to identify suspect exterior wall/foundation dampproofing. Inaccessible materials were assumed to exist and quantified to the best of Tighe & Bond's ability.

Suspect materials were divided into "homogeneous materials", building materials which were determined by the inspector to be homogeneous based on their color, texture, and age. During the asbestos portion of the Assessment, the sample locations, types of material, quantities and asbestos content, were recorded in tabular form.

The EPA recommends collecting samples of suspect ACM in a manner sufficient to determine asbestos content. The EPA NESHAP regulation does not specifically identify a minimum number of samples to be collected for each homogeneous material, but the NESHAP regulation does recommend the use of sampling protocols outlined in the EPA Asbestos Hazard Emergency Response Act (AHERA) (Title 40 CFR, Part 763, Subpart E). Numbers of samples collected by Tighe & Bond at the site were based in part on the AHERA regulation.

Bulk material samples collected were logged on proper chain-of-custody forms for transport to EMSL Analytical Inc. (EMSL), of Wallingford, Connecticut, for analysis. EMSL is a Connecticut licensed and American Industrial Hygiene Association (AIHA)-accredited asbestos laboratory. Initial asbestos sample analysis was conducted using the EPA Method for the Determination of Asbestos in Bulk Building Materials (EPA/600/R-93/116) via Polarized Light Microscopy with Dispersion Staining (PLM/DS) in accordance with the accreditation of the National Institute of Standards and Technology (NIST). Additionally, in accordance with EPA guidance documents, non-friable organically bound materials (NOB) (e.g., Door caulking and glazing, black floor tile mastic, and floor tile.) were further analyzed by Transmission Electron Microscopy (TEM) to confirm PLM analysis.

The EPA, OSHA, and the CTDPH define a material that contains greater than one percent (>1%) asbestos, utilizing PLM/DS, as being an ACM. Materials that are identified as "none detected" are specified as not containing asbestos. Materials containing less than one percent (<1%) asbestos are regulated to a degree by OSHA related to work practices, worker exposure, and waste containerization.

## 2.2 Lead-Based Paint (LBP)

A limited LBP determination utilizing an X-Ray Fluorescence (XRF) instrument to identify lead paint concentrations on building components anticipated to be impacted by the proposed Project at the site was performed. The LBP determination was conducted using an Innov-X XRF analyzer.

An XRF analyzer is an instant read instrument that measures lead content of painted or coated surfaces in milligrams per square centimeter (mg/cm<sup>2</sup>). Representative painted or coated building components such as walls, ceilings, and door systems were tested with the XRF and measurements were recorded. Component and surface locations were identified by side designations represented by the letters "A", "B", "C", and "D". The "A" side is considered the door/entrance side to the rooms with the "B", "C", and "D" side following in a clockwise order.

For this LBP determination, representative building components were tested. Individual repainting efforts are not discoverable in such a limited program. LBP issues involving properties which are not child-occupied (less than age six) facilities are regulated for worker protection relating to paint-disturbing work activities and waste disposal.

The results of this LBP determination are intended to provide guidance to contractors for occupational lead exposure controls. It is the responsibility of the contractor to ensure the safety of their employees. Building components coated with lead levels may cause exposures to lead above OSHA standards during proposed demolition and renovation activities. The results of this determination are also intended to provide insight into waste disposal requirements, in accordance with EPA RCRA regulations.

## 2.3 Polychlorinated Biphenyl-Containing Building Materials

PCBs in building materials have received extensive attention over recent years by environmental regulators, consultants, and contractors, and PCBs are increasingly being identified in buildings that may undergo demolition or renovation. Buildings/structures that were constructed (or renovated) between the 1950s and the late 1970s have a greater potential to contain PCBs in certain building materials.

It is important to note that EPA regulations which govern the Toxic Substance Control Act (TSCA) requirements including PCBs and PCB Bulk Product Wastes require the proper disposal of PCB-containing building materials, however, there is no current regulatory requirement to sample for PCBs (local, state or federal) prior to renovation or demolition.

Regardless of the regulatory sampling requirements, many waste/recycling receiving facilities may request PCB sampling to be performed. If it is suspected that PCBs could be present, it is important to also mitigate potential human health and safety risk to abatement/demolition contractors and owners' potential liability associated with the proper recycling/disposal of certain generated demolition waste materials.

One type of door caulking was determined to be associated with pre-1978 construction and tested by Tighe & Bond. These samples were submitted to Phoenix Environmental Laboratories, Inc. of Manchester, Connecticut, a Connecticut-accredited laboratory, for analysis of PCBs utilizing the EPA 3540C Soxhlet Extraction and SW 846 8082 analytical method.

Source material sampling involved removal of the source materials using hand tools to submit in bulk form to determine PCB content. The sampling tools utilized during the

sampling were properly decontaminated prior to sample collection and following the collection of each individual sample in accordance with EPA guidelines to prevent cross-contamination of samples.

Presently, source materials containing PCBs at concentrations  $\geq 50$  ppm or the equivalent units of milligrams per kilogram (mg/kg) are regulated by the EPA and characterized as PCB Bulk Product Waste. Source materials containing  $< 50$  ppm may be regulated by the EPA unless proven to be an Excluded PCB Product. The definition of an Excluded PCB Product includes those products or source of the products containing  $< 50$  ppm concentration of PCBs that were legally manufactured, processed, distributed in commerce, or used before October 1, 1984. Based on the Excluded PCB Product definition, materials installed after 1984 and determined to contain PCBs in concentrations  $> 1$  ppm are considered PCB Remediation Waste. Source materials determined to be Excluded PCB Product containing  $> 1$  ppm PCBs but  $< 50$  ppm PCBs are regulated by the Connecticut Department of Energy and Environmental Protection (CTDEEP). Source materials containing  $\leq 1$  ppm PCBs are considered non-regulated by the EPA and CTDEEP.

The identification of source materials containing regulated PCBs requires additional testing of the adjacent porous materials, surfaces, and/or soils, asphalts, and concrete located below source materials. The building materials adjacent to the regulated PCB material must be tested to determine if the adjacent materials are PCB contaminated and may also be considered PCB Bulk Product Waste, if disposed with source materials. Soils, asphalts, and concrete located below source materials must be tested to determine if these materials are PCB contaminated. If PCBs concentrations  $> 1$  ppm are identified in the soils, asphalts, and/or concrete, these materials are considered as PCB Remediation Waste, if PCB concentrations in the source material are  $\geq 50$  ppm and source material is characterized as PCB Bulk Product Waste. Sampling of adjacent materials associated with CTDEEP regulated source materials should be conducted to determine if PCBs concentrations in the source materials are a result of contamination from a previous source which contaminated the adjacent surface and therefore contaminated the existing source material. If this is determined to have occurred and the original source material was EPA regulated, the existing source materials are characterized as PCB Remediation Waste.

## **Section 3 Findings**

### **3.1 Asbestos-Containing Materials**

A total of 20 homogeneous materials were identified during the Assessment and 45 samples of suspect ACM anticipated to be impacted by the proposed Project were collected. Materials observed to be homogeneous throughout the site (i.e. door caulking & glazing, gypsum wallboard, and floor tile.) were sampled in accordance with EPA regulations and analyzed by PLM/DS. NOB materials determined to be non-asbestos by PM/DS analysis were further analyzed by TEM to determine asbestos content.

Of the materials sampled during this Assessment, the following was found to be ACM:

- Black & Gray Interior and Exterior Door Window Glazing
- Tan Exterior Door Window Caulking
- Fire Door Insulation (sampled by Hygenix, Inc.)

A complete list of suspect homogenous materials, along with sample ID numbers, material description, location, quantities and asbestos content is provided in Table 1. Refer to Figure 1 indicating locations of suspect asbestos samples collected. The laboratory analytical report and chain-of-custody forms for asbestos sampling conducted by Tighe & Bond are in Appendix B.

ACM was identified at the site during this inspection. ACM must be abated by a CTDPH-licensed Asbestos Abatement Contractor prior to building renovation in accordance with the CTDPH Standards for Asbestos Abatement (19a-332-1 through 19a-332-16). Entire door units containing ACM glazing may be removed as a non-disturbance activity in accordance to Connecticut Department of Public Health (CTDPH) EHS Circular Letter #2003-10, Regulatory Interpretation Regarding Intact Removal of Non-Friable ACM. Tighe & Bond recommends a CTDPH-licensed Asbestos Abatement Contractor be retained to remove non-friable ACM prior to and/or in conjunction with building renovation activities.

The Asbestos Abatement Contractor is required to submit a notice of asbestos abatement to the Connecticut Department of Public Health (CTDPH), post-marked or hand-delivered 10 days prior to the commencement of any asbestos abatement activities involving the abatement of greater than 10 linear feet or 25 square feet of ACM and to the EPA Region 1 office, 10 days prior to the commencement of any asbestos abatement activities involving the abatement of greater than 160 linear feet or 260 square feet of ACM.

Suspect materials encountered during renovation that are not identified in this report as being non-ACM should be assumed to be ACM until sample collection and laboratory analysis indicate otherwise.

### **3.2 Lead-Based Paint**

A lead-based paint (LBP) evaluation coupled with X-ray fluorescence (XRF) testing was conducted at the site. The purpose of this determination was to confirm whether painted components are lead containing. Refer to Table 2 for a list of those building components that were subject to lead testing.

Detectable levels of lead were not identified during the Assessment. Compliance with OSHA Lead in Construction Standard (Title 29 CFR, Part 1926.62) is required for *any* detectable level of lead. OSHA regulations involve medical monitoring as well as personal air monitoring of workers to determine exposure levels when disturbing lead-containing paint. A LBP determination cannot determine a safe level of lead but is intended to provide guidance for implementing industry standards for lead in paint at identified locations. Contractors may then better determine exposure of workers to airborne lead by understanding the different concentrations of LBP and activities that disturb paint on representative surfaces.

Contractors must be made aware that OSHA has not established a level of lead in a material below which Title 29 CFR, Part 1926.62 does not apply. Contractors shall comply with exposure assessment criteria, interim worker protection, and other requirements of the regulation as necessary to protect workers during demolition work that will impact lead paint.

### 3.3 PCB-Containing Building Materials

Refer to Table 3 for a detailed list of building components sampled by Tighe & Bond for PCBs. Refer to Figure 1 indicating locations of suspect PCB samples collected.

Laboratory analytical reports for PCB samples collected by Tighe & Bond are provided in Appendix C.

CTDEEP-regulated wastes were identified at the site associated with the exterior tan door caulk at the auditorium, stage, and gymnasium (north) door systems which include materials with PCB concentrations > 1ppm. Currently, CTDEEP only enforces the disposal of PCB-containing waste. Once the materials are removed; the materials must be disposed at an appropriate waste facility that can accept waste containing <50 ppm PCBs. Characterization sampling of the substrate material associated with the exterior tan door caulking determined the brick substrate to be none detected for PCBs.

Removal of the exterior tan door caulk and associated door frames should be performed by trained and experienced workers utilizing appropriate engineering controls and personal protection equipment. Waste generated would require handling and disposal in accordance with EPA regulations (Title 40 CFR, Part 761) including appropriate waste manifesting.



## **Section 4**

# **Assessment Limitations**

This report has been prepared on behalf of and for the exclusive use of the Client and is subject to and issued in accordance with the Agreement and the provisions thereof. Documents provided on this project shall not, in whole or in part, be disseminated or conveyed to any other party, nor used by any other party without the prior written consent of Tighe & Bond. Reuse of documents by Client or others without Tighe & Bond's written permission and mutual agreement shall be at the user's sole risk, without liability on Tighe & Bond's part and Client agrees to indemnify and hold Tighe & Bond harmless from all claims, damages, and expenses, including attorney's fees, arising out of such unauthorized use or reuse.

Tighe & Bond performed the HBMA in accordance with our Agreement (including any stated scope and schedule limitations) and used the degree of care and skill ordinarily exercised under similar circumstances by members of the profession practicing in the same or similar locality. The HBMA may not identify all regulated building materials as our scope may be limited to certain locations within an identified structure(s). Tighe & Bond performed the HBMA using reasonable methods to access and identify the presence of suspect materials. Therefore, additional suspect materials may be enclosed/hidden in inaccessible areas, including within the interior of walls, beneath slabs, above fixed ceilings or otherwise not readily accessible. Occupied buildings spaces, including the presence of tenant/building owner's materials may have restricted our access or observations of suspect materials. Tighe & Bond did not access or disassemble electrical/mechanical equipment. If applicable and to the extent feasible, we recommend supplemental evaluations following full building vacancy. Unless otherwise noted, sampling of building materials for polychlorinated biphenyls (PCBs) was not performed and the evaluation of the potential presence of mold was not completed.

If an Opinion of Probable Construction Costs (OPCC) is provided, Tighe & Bond has no control over the cost or availability of labor, equipment or materials, or over market conditions or the contractor's method of pricing, and that the opinion of probable costs is made on the basis of Tighe & Bond's professional judgment and experience is based on currently available information. Tighe & Bond makes no guarantee nor warranty, expressed or implied, that the actual costs of the construction work will not vary from the OPCC.

This report is not intended to be utilized as a bidding document or as a project specification document. This report was prepared for use by the building owner and project team (i.e. architect, construction manager, general contractor, demolition contractor, abatement contractor) for locating identified hazardous regulated building materials within the contracted limits of the scope of services.

J:\S\S2087 Stamford\031 Newfield School Door  
Project\Assessment\Revised\_Door\_Replacement\_Assessment\_BH\_0725-2019.docx

**Tighe&Bond**

**TABLES**

**TABLE 1**  
**SUMMARY OF SUSPECT ASBESTOS-CONTAINING MATERIALS**  
**NEWFIELD ELEMENTARY SCHOOL**  
**345 PEPPER RIDGE ROAD**  
**STAMFORD, CONNECTICUT**

Sample #	Material Description	Color	Material Location	Approximate Quantity	Asbestos Result	Comment
1010BH-01A	Interior Door Caulking	Red	Main Entrance-interior door	NA	ND <sup>1</sup>	
1010BH-01B	Exterior Door Caulking	Red	Corridor at Rooms 215/216	NA	ND	
1010BH-01C	Exterior Door Caulking	Red	Corridor at Room 201	NA	ND	
1010BH-02A	Interior Door Caulking	White	Corridor at Rooms 319/320	NA	ND <sup>1</sup>	
1010BH-02B	Interior Door Caulking	White	Corridor at Rooms 215/216	NA	ND	
<b>1010BH-03A</b>	<b>Interior Door Window Glazing</b>	<b>Black</b>	<b>Main Entrance-interior door</b>	<b>18 Doors</b>	<b>2% Chrysotile</b>	Interior and Exterior Door Window Glazing are Homogeneous at Main Entrance.
<b>1010BH-03B</b>	<b>Exterior Door Window Glazing</b>	<b>Black</b>	<b>Corridor at Room 201</b>		<b>Positive Stop</b>	Intact Removal.
<b>1010BH-04A</b>	<b>Exterior Door Window Glazing</b>	<b>Gray</b>	<b>Corridor at Rooms 319/320</b>		<b>2% Chrysotile</b>	
<b>1010BH-04B</b>	<b>Exterior Door Window Glazing</b>	<b>Gray</b>	<b>Corridor at Rooms 215/216</b>		<b>Positive Stop</b>	
<b>1010BH-05A</b>	<b>Exterior Door Caulking</b>	<b>Tan</b>	<b>Back Stage</b>	<b>3 Door Openings</b>	<b>3% Chrysotile</b>	
<b>1010BH-05B</b>	<b>Exterior Door Caulking</b>	<b>Tan</b>	<b>Side Auditorium at building front</b>		<b>Positive Stop</b>	
<b>1010BH-05C</b>	<b>Exterior Door Caulking</b>	<b>Tan</b>	<b>Gymnasium at kitchen</b>		<b>Positive Stop</b>	
1010BH-06A	Gypsum Board	White	Corridor at Room 201-soffit	NA	ND	
1010BH-06B	Gypsum Board	White	Main Entrance/Auditorium-soffit	NA	ND	
1010BH-07A	Taping/Joint Compound	White	Corridor at Room 201-soffit	NA	ND	

**TABLE 1**  
**SUMMARY OF SUSPECT ASBESTOS-CONTAINING MATERIALS**  
**NEWFIELD ELEMENTARY SCHOOL**  
**345 PEPPER RIDGE ROAD**  
**STAMFORD, CONNECTICUT**

Sample #	Material Description	Color	Material Location	Approximate Quantity	Asbestos Result	Comment
1010BH-07B	Taping/Joint Compound	White	Main Entrance/Auditorium-soffit	NA	ND	
1010BH-08A	12"x12" Floor Tile	Blue	Corridor at Room 201	NA	ND <sup>1</sup>	
1010BH-08B	12"x12" Floor Tile	Blue	Corridor at Rooms 215/216	NA	ND	
1010BH-08C	12"x12" Floor Tile	Blue	Portable Classroom 406	NA	ND	
1010BH-09A	Floor Tile Adhesive	Tan	Corridor at Room 201	NA	ND <sup>1</sup>	
1010BH-09B	Floor Tile Adhesive	Tan	Corridor at Rooms 215/216	NA	ND	
1010BH-09C	Floor Tile Adhesive	Tan	Portable Classroom 406	NA	ND	
1010BH-10A	4" Cove Base	Blue	Corridor at Rooms 215/216	NA	ND	
1010BH-10B	4" Cove Base	Blue	Corridor at Rooms 319/320	NA	ND	
1010BH-11A	Cove Base Adhesive	White	Corridor at Rooms 215/216	NA	ND	
1010BH-11B	Cove Base Adhesive	White	Corridor at Rooms 319/320	NA	ND	
1010BH-12A	Wall Patch over CMU	White	Corridor at Room 201	NA	ND	
1010BH-12B	Wall Patch over CMU	White	Corridor at Room 201	NA	ND	
1010BH-13A	Textured Concrete/Paint	White/Gray	Basement-wall	NA	ND	
1010BH-13B	Textured Concrete/Paint	White/Gray	Basement-wall	NA	ND	

**TABLE 1**  
**SUMMARY OF SUSPECT ASBESTOS-CONTAINING MATERIALS**  
**NEWFIELD ELEMENTARY SCHOOL**  
**345 PEPPER RIDGE ROAD**  
**STAMFORD, CONNECTICUT**

Sample #	Material Description	Color	Material Location	Approximate Quantity	Asbestos Result	Comment
1010BH-13C	Textured Concrete/Paint	White/Gray	Basement-wall	NA	ND	
1010BH-14A	Exterior Textured Concrete Soffit	White/Gray	Outside Corridor at Rooms 215/216	NA	ND	
1010BH-14B	Exterior Textured Concrete Soffit	White/Gray	Outside Corridor at Rooms 215/216	NA	ND	
1010BH-14C	Exterior Textured Concrete Soffit	White/Gray	Outside Corridor at Rooms 215/216	NA	ND	
1010BH-15A	Exterior Concrete Skim	Gray	Basement Doors	NA	ND	
1010BH-15B	Exterior Concrete Skim	Gray	Basement Doors	NA	ND	
1010BH-16A	Exterior Block Mortar	Gray	Gymnasium Doors	NA	ND	
1010BH-16B	Exterior Block Mortar	Gray	Gymnasium Doors	NA	ND	
1010BH-17A	Gypsum Board	White	Portable Classroom 404	NA	ND	
1010BH-17B	Gypsum Board	White	Portable Classroom 406	NA	ND	
1010BH-18A	Gypsum Board Cover/Skim	Beige	Portable Classroom 404	NA	ND	
1010BH-18B	Gypsum Board Cover/Skim	Beige	Portable Classroom 406	NA	ND	
1010BH-19A	Exterior Particle Board Siding	Brown	Portable Classroom - connector	NA	ND	
1010BH-19B	Exterior Particle Board Siding	Brown	Portable Classroom 406	NA	ND	



**TABLE 2**  
**SUMMARY OF LEAD PAINT MATERIALS**  
**NEWFIELD ELEMENTARY SCHOOL**  
**345 PEPPER RIDGE ROAD**  
**STAMFORD, CONNECTICUT**

Calibration	Check	Calibration #1	Calibration #2	Calibration #3	Average	
	1st Check	0.99	0.98	1.0	0.99	
2nd Check	1.00	1.1	1.0	1.03		
3rd Check						
Component	Room/Location	Side	Paint Color	Substrate	XRF Result (mg/cm <sup>2</sup> )	Comments
Interior Door	Corridor at 215/216	C	White	Metal	-0.0	
Interior Door Trim		C	Red	Metal	-0.0	
Interior Door Jamb		C	Red	Metal	-0.0	
Exterior Door		C	White	Metal	-0.0	
Exterior Door Trim		C	Red	Metal	-0.0	
Wall		C	White	CMU	-0.0	
Exterior Door	Corridor at 201	D	White	Metal	-0.0	
Exterior Door Trim		D	Red	Metal	-0.0	
Wall		D	White	CMU	-0.0	
Soffit		D	White	Gypsum	-0.0	
Interior Door	Stage Storage	A	White	Metal	-0.0	
Interior Door Trim		A	Red	Metal	-0.0	
Door Jamb		A	Red	Metal	-0.0	

**TABLE 2  
SUMMARY OF LEAD PAINT MATERIALS  
NEWFIELD ELEMENTARY SCHOOL  
345 PEPPER RIDGE ROAD  
STAMFORD, CONNECTICUT**

Component	Room/Location	Side	Paint Color	Substrate	XRF Result (mg/cm <sup>2</sup> )	Comments
Lintel		A	Red	Metal	-0.0	
Exterior Door	Stage	B	White	Metal	-0.0	
Exterior Door Trim		B	Red	Metal	-0.0	
Exterior Door Trim		B	Pink	Metal	-0.0	
Wall		B	Black	CMU	-0.0	
Interior Door		Auditorium	A	White	Metal	-0.0
Interior Door Trim	A		White	Metal	-0.0	
Interior Door Jamb	A		White	Metal	-0.0	
Soffit	A		White	Metal	-0.0	
Exterior Door	Gym at Main Ent.	D	White	Metal	-0.0	
Exterior Door Trim		D	White	Metal	-0.0	
Floor		D	Gray	Concrete	-0.0	
Lintel		D	White	Metal	-0.0	
Exterior Door	Gym at Kitchen	D	White	Metal	-0.0	
Exterior Door Trim		D	Red	Metal	-0.0	
Ceiling		D	White	Concrete	-0.0	
Exterior Door		A	Black	Metal	-0.0	



**TABLE 2**  
**SUMMARY OF LEAD PAINT MATERIALS**  
**NEWFIELD ELEMENTARY SCHOOL**  
**345 PEPPER RIDGE ROAD**  
**STAMFORD, CONNECTICUT**

Component	Room/Location	Side	Paint Color	Substrate	XRF Result (mg/cm <sup>2</sup> )	Comments
Exterior Door Trim	Basement	A	Black	Metal	-0.0	
Wall		A	White	Concrete	-0.0	textured
Exterior Door	Portable Classroom	A	Brown	Metal	-0.0	
Exterior Door Trim		A	Brown	Metal	-0.0	
Siding		A	Tan	Particle Brd.	-0.0	
Wall		A	White	Gypsum	-0.0	

**LEGEND**

Sample results, reported as '% by weight', were compared to the threshold for lead based paint per EPA's definition. EPA defines "lead-based paint" as any "paint, surface coating that contains lead equal to or exceeding one milligram per square centimeter (1.0 mg/cm<sup>2</sup>) or 0.5% by weight."

**BOLD INDICATES LEAD-BASED PAINT**

SURVEY PERFORMED BY: JOHN R. HOBBS

**TABLE 3**  
**SUMMARY OF SUSPECT PCB-CONTAINING BUILDING MATERIALS**  
**NEWFIELD ELEMENTARY SCHOOL**  
**345 PEPPER RIDGE ROAD**  
**STAMFORD, CONNECTICUT**

Sample #	Material Description	Material Location	Substrate	Approximate Quantity	PCB Results (PPM)	Comments
EDC-01A	Tan Exterior Door Caulking	Exterior Door - Stage	Brick	28 LF	ND	Material Contains >1% Asbestos
EDC-01B		Exterior Door - Gymnasium (at kitchen)	Brick	28 LF	ND	
EDC-01C		Exterior Door - Auditorium (at building front)	Brick	28 LF	2.7 (Aroclor 1254)	
NFE-TAN-EDC-BRICK-01	Brick Substrate	Exterior Door - Auditorium (at building front)	Brick	NA	ND	

**LEGEND**

SURVEY PERFORMED BY: JOHN R. HOBBS

PPM = PARTS PER MILLION

**BOLD INDICATES = CTDEEP REGULATED PCB-CONTAINING MATERIAL (<50 PPM)**

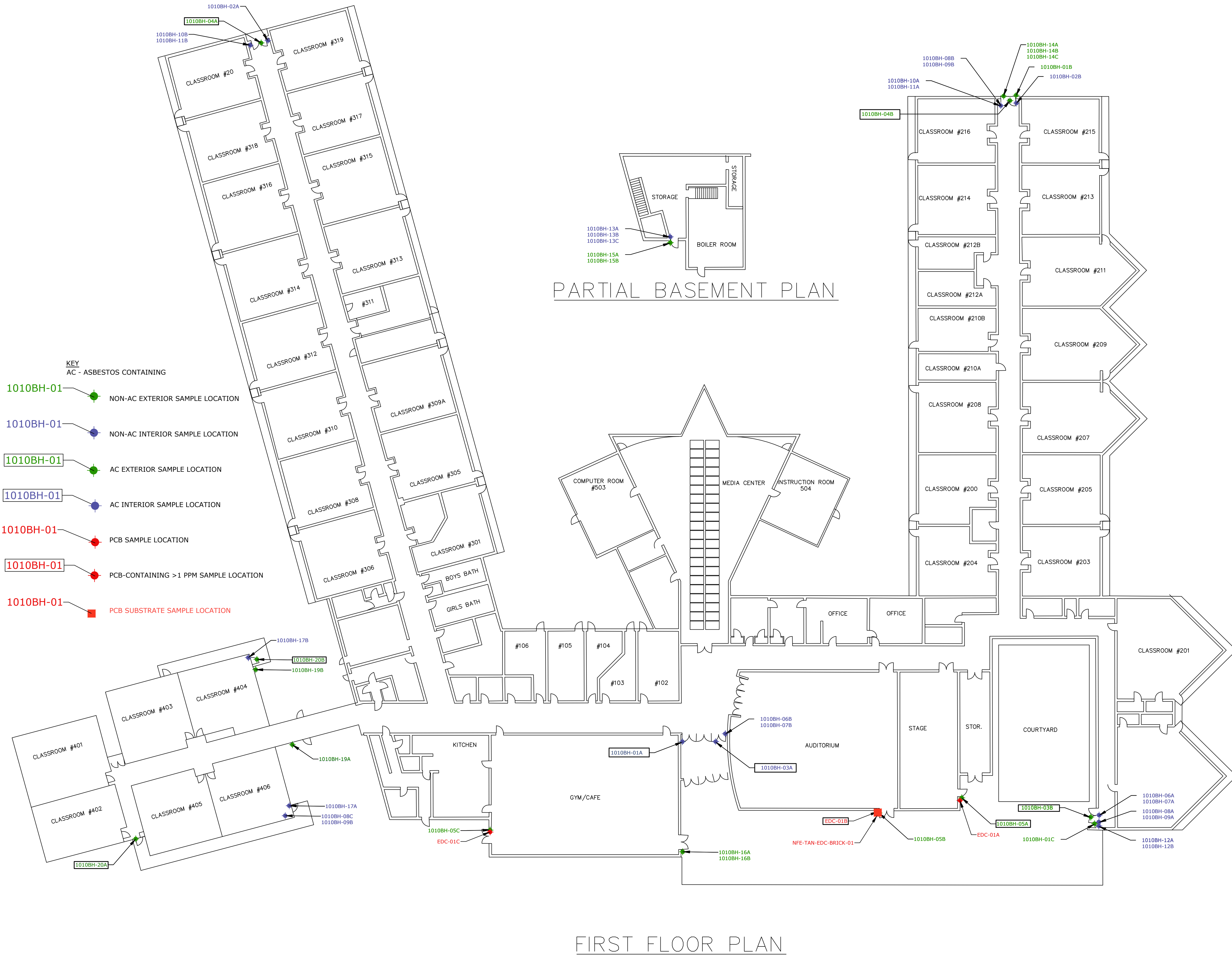
ND = NONE DETECTED

LF = LINEAR FEET

NA= NOT APPLICABLE

**Tighe&Bond**

**FIGURE**



PARTIAL BASEMENT PLAN

FIRST FLOOR PLAN

**Newfield School Door Project**

City of Stamford

Stamford, CT

MARK	DATE	DESCRIPTION
IFA	7/25/2019	REVISED
PROJECT NO: S2087		
DATE: 11/27/2018		
FILE: Newfield School Door Project.dwg		
DRAWN BY: WAC/JLL		
CHECKED: BH		
APPROVED: KM		

**ASBESTOS AND PCB SAMPLE LOCATIONS**

SCALE: 1/16" = 1'

REVISED FIGURE 1

Plot Date: 7/25/2019 11:06am By: Adomeit  
 Plotted On: 7/25/2019 11:06am  
 Tighe & Bond: S:\S2087 - Stamford\031 - Newfield School Door Project\Drawings\CAD\Newfield School Door Project.dwg

**Tighe&Bond**

**APPENDIX A**



Dear JOHN R. HOBBSINS,

Attached you will find your validated certificate for the coming year. Should you have any questions about your certificate renewal, please do not hesitate to write or call:

Department of Public Health  
P.O. Box 340308  
M.S.#12MQA  
Hartford, CT 06134-0308

(860) 509-7603  
oplc.dph@ct.gov  
www.ct.gov/dph/license

Sincerely,

RAUL PINO, MD, MPH, COMMISSIONER  
DEPARTMENT OF PUBLIC HEALTH

**STATE OF CONNECTICUT**  
**DEPARTMENT OF PUBLIC HEALTH**

PURSUANT TO THE PROVISIONS OF THE GENERAL STATUTES OF CONNECTICUT  
THE INDIVIDUAL NAMED BELOW IS CERTIFIED  
BY THIS DEPARTMENT AS A  
**ASBESTOS CONSULTANT-INSPECTOR**

JOHN R. HOBBSINS

CERTIFICATE NO.  
**000700**

CURRENT THROUGH  
**01/31/19**

VALIDATION NO.  
**03-649452**

*John R Hobbsins*  
SIGNATURE

*Raul Pino*  
COMMISSIONER

**EMPLOYER'S COPY**

**STATE OF CONNECTICUT**  
**DEPARTMENT OF PUBLIC HEALTH**

NAME  
JOHN R. HOBBSINS

CERTIFICATE NO.  
**000700**

CURRENT THROUGH  
**01/31/19**

PROFESSION  
ASBESTOS CONSULTANT-INSPECTOR

VALIDATION NO.  
**03-649452**

*John R Hobbsins*  
SIGNATURE

*Raul Pino*  
COMMISSIONER

**INSTRUCTIONS:**

1. Detach and sign each of the cards on this form
2. Display the large card in a prominent place in your office or place of business.
3. The wallet card is for you to carry on your person. If you do not wish to carry the wallet card, place it in a secure place.
4. The employer's copy is for persons who must demonstrate current licensure/certification in order to retain employment or privileges. The employer's card is to be presented to the employer and kept by them as a part of your personnel file. Only one copy of this card can be supplied to you.

**WALLET CARD**

**STATE OF CONNECTICUT**  
**DEPARTMENT OF PUBLIC HEALTH**

NAME  
JOHN R. HOBBSINS

CERTIFICATE NO.  
**000700**

CURRENT THROUGH  
**01/31/19**

PROFESSION  
ASBESTOS CONSULTANT-INSPECTOR

VALIDATION NO.  
**03-649452**

*John R Hobbsins*  
SIGNATURE

*Raul Pino*  
COMMISSIONER



# QELS&I

Quality Environmental Solutions & Technologies, Inc.  
1376 Route 9, Wappingers Falls, NY 12590  
Phone (845) 298-6031 Fax (845) 298-6251

HEREBY CERTIFIES THAT

**JOHN R. HOBBS**

HAS SUCCESSFULLY COMPLETED A TRAINING SEMINAR IN:

**NYS/EPA INSPECTOR REFRESHER**

MEETING THE REQUIREMENTS OF NYSDOH 10 NYCRR, PART 73 AND  
TSCA TITLE 11 AND HAS BEEN AWARDED THIS CERTIFICATE BY:



**PAUL A. RODRIGUEZ**  
TRAINING DIRECTOR

NOTE: Official record of successful completion is DOH 2832 Certificate of Completion of Asbestos Safety  
Training

NOTE: DOH 2832 - A \$20 fee shall be charged for replacement of Certificate of Completion DOH 2832  
ON THIS DATE: 9/7/17

CERTIFICATE NUMBER: 791346

EXPIRATION DATE: 9/7/2018

**Tighe&Bond**

**APPENDIX B**



**SAMPLE LOG FOR ASBESTOS BULKS**Sheet 1 of 3Project Name: Newfield Elementary School Door Replacement Project No. 28-2087-031Building: Newfield Elementary, Samford, CT Project Manager: Kevin McCarthy

Sample ID	Material Description	Color	Sample Location
<b>*1010BH-01A</b>	Interior Door Caulking	Red	Main Entrance-interior door
1010BH-01B	Exterior Door Caulking	Red	Corridor at Rooms 215/216
1010BH-01C	Exterior Door Caulking	Red	Corridor at Room 201
<b>*1010BH-02A</b>	Interior Door Caulking	White	Corridor at Rooms 319/320
1010BH-02B	Interior Door Caulking	White	Corridor at Rooms 215/216
<b>*1010BH-03A</b>	Interior Door Window Glazing	Black	Main Entrance-interior door
1010BH-03B	Exterior Door Window Glazing	Black	Corridor at Room 201
<b>*1010BH-04A</b>	Exterior Door Window Glazing	Gray	Corridor at Rooms 319/320
1010BH-04B	Exterior Door Window Glazing	Gray	Corridor at Rooms 215/216
<b>*1010BH-05A</b>	Exterior Door Caulking	Tan	Back Stage
1010BH-05B	Exterior Door Caulking	Tan	Side Auditorium at building front
1010BH-05C	Exterior Door Caulking	Tan	Gymnasium at kitchen
1010BH-06A	Gypsum Board	White	Corridor at Room 201-soffit
1010BH-06B	Gypsum Board	White	Main Entrance/Auditorium-soffit
1010BH-07A	Taping/Joint Compound	White	Corridor at Room 201-soffit
1010BH-07B	Taping/Joint Compound	White	Main Entrance/Auditorium-soffit
<b>*1010BH-08A</b>	12"x12" Floor Tile	Blue	Corridor at Room 201
1010BH-08B	12"x12" Floor Tile	Blue	Corridor at Rooms 215/216
1010BH-08C	12"x12" Floor Tile	Blue	Portable Classroom 406
<b>*1010BH-09A</b>	Floor Tile Adhesive	Tan	Corridor at Room 201

**SAMPLE LOG FOR ASBESTOS BULKS**Sheet 2 of 3Project Name: Newfield Elementary School Door Replacement Project No. 28-2087-031Building: Newfield Elementary, Samford, CT Project Manager: Kevin McCarthy

Sample ID	Material Description	Color	Sample Location
1010BH-09B	Floor Tile Adhesive	Tan	Corridor at Rooms 215/216
1010BH-09C	Floor Tile Adhesive	Tan	Portable Classroom 406
1010BH-10A	4" Cove Base	Blue	Corridor at Rooms 215/216
1010BH-10B	4" Cove Base	Blue	Corridor at Rooms 319/320
<b>*1010BH-11A</b>	Cove Base Adhesive	White	Corridor at Rooms 215/216
1010BH-11B	Cove Base Adhesive	White	Corridor at Rooms 319/320
1010BH-12A	Wall Patch over CMU	White	Corridor at Room 201
1010BH-12B	Wall Patch over CMU	White	Corridor at Room 201
1010BH-13A	Textured Concrete/Paint	White/Gray	Basement-wall
1010BH-13B	Textured Concrete/Paint	White/Gray	Basement-wall
1010BH-13C	Textured Concrete/Paint	White/Gray	Basement-wall
1010BH-14A	Exterior Textured Concrete Soffit	White/Gray	Outside Corridor at Rooms 215/216
1010BH-14B	Exterior Textured Concrete Soffit	White/Gray	Outside Corridor at Rooms 215/216
1010BH-14C	Exterior Textured Concrete Soffit	White/Gray	Outside Corridor at Rooms 215/216
1010BH-15A	Exterior Concrete Skim	Gray	Basement Doors
1010BH-15B	Exterior Concrete Skim	Gray	Basement Doors
1010BH-16A	Exterior Block Mortar	Gray	Gymnasium Doors
1010BH-16B	Exterior Block Mortar	Gray	Gymnasium Doors



# Tighe&Bond

Engineers | Environmental Specialists

213 Court Street, Suite 1100, Middletown, CT 06457

Phone 860-704-4760

## SAMPLE LOG FOR ASBESTOS BULKS

Sheet 3 of 3

Project Name: Newfield Elementary School Door Replacement Project No. 28-2087-031

Building: Newfield Elementary, Samford, CT Project Manager: Kevin McCarthy

Sample ID	Material Description	Color	Sample Location
1010BH-17A	Gypsum Board	White	Portable Classroom 404
1010BH-17B	Gypsum Board	White	Portable Classroom 406
1010BH-18A	Gypsum Board Cover/Skim	Beige	Portable Classroom 404
1010BH-18B	Gypsum Board Cover/Skim	Beige	Portable Classroom 406
1010BH-19A	Exterior Particle Board Siding	Brown	Portable Classroom - connector
1010BH-19B	Exterior Particle Board Siding	Brown	Portable Classroom 406
<b>*1010BH-20A</b>	Exterior Door Window Glazing	Black	Portable Classroom- balcony
1010BH-20B	Exterior Door Window Glazing	Black	Portable Classroom 404

**TOTAL # OF SAMPLES:** 45 State sample collected in: CT

Analysis Method:  PLM  TEM-NOB  Point CT - 400  Other

Turnaround Time (check one):  3-hr  6-hr  24-hr  48-hr  72-hr  96-hr  1-week  2-week

Please call the office if analyses will be late at: \_\_\_\_\_

**Email Results to:** jhobbins@tighebond.com **Do Not Mail Hard Copy Report**

**Special Instructions:** Stop analysis on first positive sample in each homogeneous set of samples unless otherwise noted. Do not layer samples unless indicated. Do Not Point Count. If NOB group sample results are 0% - < 1% by PLM, analyze only "A" group sample above by TEM NOB, per group, as noted by asterisk and bold front.

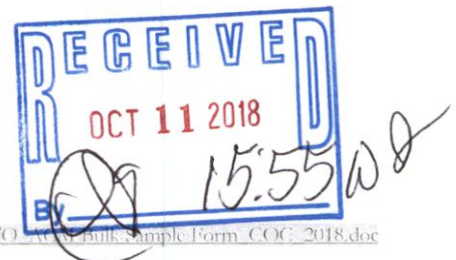
**Samples collected by:** Bob Hobbins **Date:** 10-10-18 **Time:** \_\_\_\_\_

**Samples Relinquished by:** BH **Date:** 10-11-18 **Time:** \_\_\_\_\_

**Samples Received by:** \_\_\_\_\_ **Date:** \_\_\_\_\_ **Time:** \_\_\_\_\_

**Shipped To:**  EMSL State CT  Other \_\_\_\_\_

**Method of Shipment:**  Overnight (Check one: Fed Ex / UPS)  Other drop off





# EMSL Analytical, Inc.

29 North Plains Highway, Unit # 4 Wallingford, CT 06492

Tel/Fax: (203) 284-5948 / (203) 284-5978

<http://www.EMSL.com> / [wallingfordlab@emsl.com](mailto:wallingfordlab@emsl.com)

EMSL Order: 241805423

Customer ID: TIGH62

Customer PO:

Project ID:

**Attention:** Bob Hobbins  
Tighe & Bond  
213 Court Street  
Suite 1100  
Middletown, CT 06457

**Phone:** (203) 827-8575

**Fax:** (860) 704-4775

**Received Date:** 10/11/2018 3:55 PM

**Analysis Date:** 10/17/2018

**Collected Date:** 10/10/2018

**Project:** 28-2087-031/NEWFIELD ELEMENTARY, SAMFORD CT

## Test Report: Asbestos Analysis of Bulk Materials via EPA 600/R-93/116 Method using Polarized Light Microscopy

Sample	Description	Appearance	Non-Asbestos		Asbestos
			% Fibrous	% Non-Fibrous	% Type
1010BH-01A 241805423-0001	MAIN ENTRANCE INTERIOR DOOR - INTERIOR DOOR CAULKING RED	Red Non-Fibrous Homogeneous		100% Non-fibrous (Other)	None Detected
1010BH-01B 241805423-0002	CORRIDOR AT ROOMS 215/216 - EXTERIOR DOOR CAULKING RED	Red Non-Fibrous Homogeneous		100% Non-fibrous (Other)	None Detected
1010BH-01C 241805423-0003	CORRIDOR AT ROOM 201 - EXTERIOR DOOR CAULKING RED	Red Non-Fibrous Homogeneous		100% Non-fibrous (Other)	None Detected
1010BH-02A 241805423-0004	CORRIDOR AT ROOMS 319/320 - INTERIOR DOOR CAULKING WHITE	White Non-Fibrous Homogeneous		100% Non-fibrous (Other)	None Detected
1010BH-02B 241805423-0005	CORRIDOR AT ROOMS 215/216 - INTERIOR DOOR CAULKING WHITE	Tan Non-Fibrous Homogeneous		100% Non-fibrous (Other)	None Detected
1010BH-03A 241805423-0006	MAIN ENTRANCE INTERIOR DOOR - INTERIOR DOOR WINDOW GLAZING BLACK	Black Non-Fibrous Homogeneous	10% Cellulose	88% Non-fibrous (Other)	2% Chrysotile
1010BH-03B 241805423-0007	CORRIDOR AT ROOM 201 - EXTERIOR DOOR WINDOW GLAZING BLACK				Positive Stop (Not Analyzed)
1010BH-04A 241805423-0008	CORRIDOR AT ROOMS 319/320 - EXTERIOR DOOR WINDOW GLAZING GRAY	Gray/Black Non-Fibrous Homogeneous	5% Fibrous (Other)	93% Non-fibrous (Other)	2% Chrysotile
1010BH-04B 241805423-0009	CORRIDOR AT ROOMS 215/216 - EXTERIOR DOOR WINDOW GLAZING GRAY				Positive Stop (Not Analyzed)
1010BH-05A 241805423-0010	BACK STAGE - EXTERIOR DOOR CAULKING TAN	Gray Non-Fibrous Homogeneous		97% Non-fibrous (Other)	3% Chrysotile
1010BH-05B 241805423-0011	SIDE AUDITORIUM AT BUILDING FRONT - EXTERIOR DOOR CAULKING TAN				Positive Stop (Not Analyzed)

Initial report from: 10/18/2018 10:38:42



# EMSL Analytical, Inc.

29 North Plains Highway, Unit # 4 Wallingford, CT 06492

Tel/Fax: (203) 284-5948 / (203) 284-5978

<http://www.EMSL.com> / [wallingfordlab@emsl.com](mailto:wallingfordlab@emsl.com)

**EMSL Order:** 241805423  
**Customer ID:** TIGH62  
**Customer PO:**  
**Project ID:**

## Test Report: Asbestos Analysis of Bulk Materials via EPA 600/R-93/116 Method using Polarized Light Microscopy

Sample	Description	Appearance	Non-Asbestos		Asbestos
			% Fibrous	% Non-Fibrous	% Type
1010BH-05C 241805423-0012	GYMNASIUM AT KITCHEN - EXTERIOR DOOR CAULKING TAN				Positive Stop (Not Analyzed)
1010BH-06A 241805423-0013	CORRIDOR AT ROOM 201 SOFFIT - GYPSUM BOARD WHITE	Gray/Tan Fibrous Homogeneous	15% Cellulose	85% Non-fibrous (Other)	None Detected
1010BH-06B 241805423-0014	MAIN ENTRANCE/AUDITORIUM SOFFIT - GYPSUM BOARD WHITE	Gray Non-Fibrous Homogeneous	2% Cellulose	98% Non-fibrous (Other)	None Detected
1010BH-07A 241805423-0015	CORRIDOR AT ROOM 201 SOFFIT - TAPING/JOINT COMPOUND WHITE	White Non-Fibrous Homogeneous		100% Non-fibrous (Other)	None Detected
1010BH-07B 241805423-0016	MAIN ENTRANCE/AUDITORIUM SOFFIT - TAPING/JOINT COMPOUND WHITE	White Non-Fibrous Homogeneous		100% Non-fibrous (Other)	None Detected
1010BH-08A 241805423-0017	CORRIDOR AT ROOM 201 - 12"X12" FLOOR TILE BLUE	Blue Non-Fibrous Homogeneous		100% Non-fibrous (Other)	None Detected
1010BH-08B 241805423-0018	CORRIDOR AT ROOMS 215/216 - 12"X12" FLOOR TILE BLUE	Blue Non-Fibrous Homogeneous		100% Non-fibrous (Other)	None Detected
1010BH-08C 241805423-0019	PORTABLE CLASSROOM 406 - 12"X12" FLOOR TILE BLUE	Gray Non-Fibrous Homogeneous		100% Non-fibrous (Other)	None Detected
1010BH-09A 241805423-0020	CORRIDOR AT ROOM 201 - FLOOR TILE ADHESIVE TAN	Tan Non-Fibrous Homogeneous	10% Cellulose	90% Non-fibrous (Other)	None Detected
1010BH-09B 241805423-0021	CORRIDOR AT ROOMS 215/216 - FLOOR TILE ADHESIVE TAN	Tan Non-Fibrous Homogeneous	5% Cellulose	95% Non-fibrous (Other)	None Detected
1010BH-09C 241805423-0022	PORTABLE CLASSROOM 406 - FLOOR TILE ADHESIVE TAN	Brown Non-Fibrous Homogeneous	10% Cellulose	90% Non-fibrous (Other)	None Detected
1010BH-10A 241805423-0023	CORRIDOR AT ROOMS 215/216 - 4" COVE BASE BLUE	Blue Non-Fibrous Homogeneous		100% Non-fibrous (Other)	None Detected
1010BH-10B 241805423-0024	CORRIDOR AT ROOMS 319/320 - 4" COVE BASE BLUE	Blue Non-Fibrous Homogeneous	5% Cellulose	95% Non-fibrous (Other)	None Detected
1010BH-11A 241805423-0025	CORRIDOR AT ROOMS 215/216 - COVE BASE ADHESIVE WHITE	White Non-Fibrous Homogeneous		100% Non-fibrous (Other)	None Detected
1010BH-11B 241805423-0026	CORRIDOR AT ROOMS 319/320 - COVE BASE ADHESIVE WHITE	Tan Non-Fibrous Homogeneous		100% Non-fibrous (Other)	None Detected

Initial report from: 10/18/2018 10:38:42



# EMSL Analytical, Inc.

29 North Plains Highway, Unit # 4 Wallingford, CT 06492

Tel/Fax: (203) 284-5948 / (203) 284-5978

<http://www.EMSL.com> / [wallingfordlab@emsl.com](mailto:wallingfordlab@emsl.com)

EMSL Order: 241805423

Customer ID: TIGH62

Customer PO:

Project ID:

## Test Report: Asbestos Analysis of Bulk Materials via EPA 600/R-93/116 Method using Polarized Light Microscopy

Sample	Description	Appearance	Non-Asbestos		Asbestos
			% Fibrous	% Non-Fibrous	% Type
1010BH-12A 241805423-0027	CORRIDOR AT ROOM 201 - WALL PATCH OVER CMU WHITE	Gray/White Non-Fibrous Homogeneous		10% Quartz 90% Non-fibrous (Other)	None Detected
1010BH-12B 241805423-0028	CORRIDOR AT ROOM 201 - WALL PATCH OVER CMU WHITE	Gray/White Non-Fibrous Homogeneous		15% Quartz 85% Non-fibrous (Other)	None Detected
1010BH-13A 241805423-0029	BASEMENT-WALL - TEXTURED CONCRETE/PAINT WHITE/GRAY	Gray/White Non-Fibrous Homogeneous		10% Quartz 90% Non-fibrous (Other)	None Detected
1010BH-13B 241805423-0030	BASEMENT-WALL - TEXTURED CONCRETE/PAINT WHITE/GRAY	Gray/White Non-Fibrous Homogeneous		10% Quartz 90% Non-fibrous (Other)	None Detected
1010BH-13C 241805423-0031	BASEMENT-WALL - TEXTURED CONCRETE/PAINT WHITE/GRAY	Gray/White Non-Fibrous Homogeneous		10% Quartz 90% Non-fibrous (Other)	None Detected
1010BH-14A 241805423-0032	OUTSIDE CORRIDOR AT ROOMS 215/216 - EXTERIOR TEXTURED CONCRETE SOFFIT WHITE/GRAY	Gray/White Non-Fibrous Homogeneous	2% Glass	15% Quartz 83% Non-fibrous (Other)	None Detected
1010BH-14B 241805423-0033	OUTSIDE CORRIDOR AT ROOMS 215/216 - EXTERIOR TEXTURED CONCRETE SOFFIT WHITE/GRAY	Gray/White Fibrous Homogeneous	15% Glass	10% Quartz 75% Non-fibrous (Other)	None Detected
1010BH-14C 241805423-0034	OUTSIDE CORRIDOR AT ROOMS 215/216 - EXTERIOR TEXTURED CONCRETE SOFFIT WHITE/GRAY	Gray/Tan/White Fibrous Homogeneous	20% Glass	10% Quartz 70% Non-fibrous (Other)	None Detected
1010BH-15A 241805423-0035	BASEMENT DOORS - EXTERIOR CONCRETE SKIM GRAY	Gray Non-Fibrous Homogeneous		10% Quartz 90% Non-fibrous (Other)	None Detected
1010BH-15B 241805423-0036	BASEMENT DOORS - EXTERIOR CONCRETE SKIM GRAY	Gray Non-Fibrous Homogeneous		15% Quartz 85% Non-fibrous (Other)	None Detected
1010BH-16A 241805423-0037	GYMNASIUM DOORS - EXTERIOR BLOCK MORTAR GRAY	Gray Non-Fibrous Homogeneous		100% Non-fibrous (Other)	None Detected
1010BH-16B 241805423-0038	GYMNASIUM DOORS - EXTERIOR BLOCK MORTAR GRAY	Gray Non-Fibrous Homogeneous		100% Non-fibrous (Other)	None Detected

Initial report from: 10/18/2018 10:38:42



# EMSL Analytical, Inc.

29 North Plains Highway, Unit # 4 Wallingford, CT 06492

Tel/Fax: (203) 284-5948 / (203) 284-5978

<http://www.EMSL.com> / [wallingfordlab@emsl.com](mailto:wallingfordlab@emsl.com)

**EMSL Order:** 241805423  
**Customer ID:** TIGH62  
**Customer PO:**  
**Project ID:**

## Test Report: Asbestos Analysis of Bulk Materials via EPA 600/R-93/116 Method using Polarized Light Microscopy

Sample	Description	Appearance	Non-Asbestos		Asbestos
			% Fibrous	% Non-Fibrous	% Type
1010BH-17A 241805423-0039	PORTABLE CLASSROOM 404 - GYPSUM BOARD WHITE	White Non-Fibrous Homogeneous	2% Cellulose	98% Non-fibrous (Other)	None Detected
1010BH-17B 241805423-0040	PORTABLE CLASSROOM 406 - GYPSUM BOARD WHITE	Gray Non-Fibrous Homogeneous	15% Cellulose	85% Non-fibrous (Other)	None Detected
1010BH-18A 241805423-0041	PORTABLE CLASSROOM 404 - GYPSUM BOARD COVER/SKIM BEIGE	Tan/White Fibrous Homogeneous	50% Cellulose	50% Non-fibrous (Other)	None Detected
1010BH-18B 241805423-0042	PORTABLE CLASSROOM 406 - GYPSUM BOARD COVER/SKIM BEIGE	Brown/Tan Fibrous Homogeneous	50% Cellulose	50% Non-fibrous (Other)	None Detected
1010BH-19A 241805423-0043	PORTABLE CLASSROOM CONNECTOR - EXTERIOR PARTICLE BOARD SIDING BROWN	Brown Fibrous Homogeneous	98% Cellulose	2% Non-fibrous (Other)	None Detected
1010BH-19B 241805423-0044	PORTABLE CLASSROOM 406 - EXTERIOR PARTICLE BOARD SIDING BROWN	Brown Non-Fibrous Homogeneous	98% Cellulose	2% Non-fibrous (Other)	None Detected
1010BH-20A 241805423-0045	PORTABLE CLASSROOM BALCONY - EXTERIOR WINDOW GLAZING BLACK	Black Non-Fibrous Homogeneous		98% Non-fibrous (Other)	2% Chrysotile
1010BH-20B 241805423-0046	PORTABLE CLASSROOM 404 - EXTERIOR WINDOW GLAZING BLACK				Positive Stop (Not Analyzed)

Analyst(s) \_\_\_\_\_

Lauren Buffone (25)

Quetcy Castro Romero (16)

Gloria V. Oriol, Microbiology Manager  
or Other Approved Signatory

EMSL maintains liability limited to cost of analysis. The above analyses were performed in general compliance with Appendix E to Subpart E of 40 CFR (previously EPA 600/M4-82-020 "Interim Method"), but augmented with procedures outlined in the 1993 ("final") version of the method. This report relates only to the samples reported above, and may not be reproduced, except in full, without written approval by EMSL. EMSL bears no responsibility for sample collection activities or analytical method limitations. Interpretation and use of test results are the responsibility of the client. All samples received in acceptable condition unless otherwise noted. This report must not be used by the client to claim product certification, approval, or endorsement by NVLAP, NIST or any agency of the federal government. EMSL recommends gravimetric reduction for all non-friable organically bound materials prior to analysis. Estimation of uncertainty is available on request.

Samples analyzed by EMSL Analytical, Inc. Wallingford, CT NVLAP Lab Code 200700-0,

Initial report from: 10/18/2018 10:38:42





# EMSL Analytical, Inc.

29 North Plains Highway, Unit # 4 Wallingford, CT 06492

Tel/Fax: (203) 284-5948 / (203) 284-5978

<http://www.EMSL.com> / [wallingfordlab@emsl.com](mailto:wallingfordlab@emsl.com)

EMSL Order: 241805423

Customer ID: TIGH62

Customer PO:

Project ID:

**Attention:** Bob Hobbins  
Tighe & Bond  
213 Court Street  
Suite 1100  
Middletown, CT 06457

**Phone:** (203) 827-8575

**Fax:** (860) 704-4775

**Received Date:** 10/11/2018 3:55 PM

**Analysis Date:** 10/18/2018

**Collected Date:** 10/10/2018

**Project:** 28-2087-031/NEWFIELD ELEMENTARY, SAMFORD CT

## Test Report: Asbestos Analysis of Non-Friable Organically Bound Materials by TEM via EPA/600/R-93/116 Section 2.5.5.1

Sample ID	Description	Appearance	% Matrix Material	% Non-Asbestos Fibers	Asbestos Types
1010BH-01A 241805423-0001	MAIN ENTRANCE INTERIOR DOOR - INTERIOR DOOR CAULKING RED	Red Non-Fibrous Homogeneous	100	None	No Asbestos Detected
1010BH-02A 241805423-0004	CORRIDOR AT ROOMS 319/320 - INTERIOR DOOR CAULKING WHITE	White Non-Fibrous Homogeneous	100	None	No Asbestos Detected
1010BH-08A 241805423-0017	CORRIDOR AT ROOM 201 - 12"X12" FLOOR TILE BLUE	Blue Non-Fibrous Homogeneous	100	None	No Asbestos Detected
1010BH-09A 241805423-0020	CORRIDOR AT ROOM 201 - FLOOR TILE ADHESIVE TAN	Tan Non-Fibrous Homogeneous	100	None	No Asbestos Detected
1010BH-11A 241805423-0025	CORRIDOR AT ROOMS 215/216 - COVE BASE ADHESIVE WHITE				
Insufficient Material					

Analyst(s)

Dylan Aiello (4)

Gloria V. Oriol, Microbiology Manager  
or other approved signatory

This laboratory is not responsible for % asbestos in total sample when the residue only is submitted for analysis. The above report relates only to the items tested. This report may not be reproduced, except in full, without written approval by EMSL Analytical, Inc. Samples received in good condition unless otherwise noted. Unless requested by the client, building materials manufactured with multiple layers (i.e. linoleum, wallboard, etc.) are reported as a single sample.

Samples analyzed by EMSL Analytical, Inc. Wallingford, CT

Initial report from: 10/18/2018 10:38:39



**Tighe&Bond**

**APPENDIX C**



Thursday, October 18, 2018

Attn: Mr. Bob Hobbins  
Tighe & Bond  
213 Court St, Suite 1100  
Middletown, CT 06457

Project ID: 28-2087-031  
Sample ID#s: CB70506 - CB70508

This laboratory is in compliance with the NELAC requirements of procedures used except where indicated.

This report contains results for the parameters tested, under the sampling conditions described on the Chain Of Custody, as received by the laboratory. This report is incomplete unless all pages indicated in the pagination at the bottom of the page are included.

All soils, solids and sludges are reported on a dry weight basis unless otherwise noted in the sample comments.

A scanned version of the COC form accompanies the analytical report and is an exact duplicate of the original.

If you have any questions concerning this testing, please do not hesitate to contact Phoenix Client Services at ext. 200.

Sincerely yours,

A handwritten signature in black ink that reads "Phyllis Shiller". The signature is written in a cursive style.

Phyllis/Shiller  
Laboratory Director

NELAC - #NY11301  
CT Lab Registration #PH-0618  
MA Lab Registration #M-CT007  
ME Lab Registration #CT-007  
NH Lab Registration #213693-A,B

NJ Lab Registration #CT-003  
NY Lab Registration #11301  
PA Lab Registration #68-03530  
RI Lab Registration #63  
UT Lab Registration #CT00007  
VT Lab Registration #VT11301



Environmental Laboratories, Inc.  
 587 East Middle Turnpike, P.O.Box 370, Manchester, CT 06045  
 Tel. (860) 645-1102 Fax (860) 645-0823

# Analysis Report

October 18, 2018

FOR: Attn: Mr. Bob Hobbins  
 Tighe & Bond  
 213 Court St, Suite 1100  
 Middletown, CT 06457

## Sample Information

Matrix: BULK  
 Location Code: TIGHE  
 Rush Request: Standard  
 P.O.#:

## Custody Information

Collected by: BH  
 Received by: LB  
 Analyzed by: see "By" below

## Date

10/11/18

10/12/18

## Time

11:50

## Laboratory Data

SDG ID: GCB70506  
 Phoenix ID: CB70506

Project ID: 28-2087-031  
 Client ID: EDC-01A

Parameter	Result	RL/ PQL	Units	Dilution	Date/Time	By	Reference
Caulk Extraction for PCB	Completed				10/12/18	X/K/AK	SW3540C

### PCB (Soxhlet SW3540C)

PCB-1016	ND	760	ug/Kg	5	10/16/18	AW	SW8082A
PCB-1221	ND	760	ug/Kg	5	10/16/18	AW	SW8082A
PCB-1232	ND	760	ug/Kg	5	10/16/18	AW	SW8082A
PCB-1242	ND	760	ug/Kg	5	10/16/18	AW	SW8082A
PCB-1248	ND	760	ug/Kg	5	10/16/18	AW	SW8082A
PCB-1254	ND	760	ug/Kg	5	10/16/18	AW	SW8082A
PCB-1260	ND	760	ug/Kg	5	10/16/18	AW	SW8082A
PCB-1262	ND	760	ug/Kg	5	10/16/18	AW	SW8082A
PCB-1268	ND	760	ug/Kg	5	10/16/18	AW	SW8082A

### QA/QC Surrogates

% DCBP	118		%	5	10/16/18	AW	30 - 150 %
% TCMX	85		%	5	10/16/18	AW	30 - 150 %

Parameter	Result	RL/ PQL	Units	Dilution	Date/Time	By	Reference
-----------	--------	------------	-------	----------	-----------	----	-----------

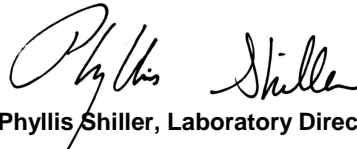
RL/PQL=Reporting/Practical Quantitation Level ND=Not Detected BRL=Below Reporting Level  
QA/QC Surrogates: Surrogates are compounds (preceeded with a %) added by the lab to determine analysis efficiency. Surrogate results(%) listed in the report are not "detected" compounds.

**Comments:**

Results are reported on an ``as received`` basis, and are not corrected for dry weight.

All soils, solids and sludges are reported on a dry weight basis unless otherwise noted in the sample comments.

If there are any questions regarding this data, please call Phoenix Client Services.  
This report must not be reproduced except in full as defined by the attached chain of custody.



**Phyllis Shiller, Laboratory Director**

**October 18, 2018**

**Reviewed and Released by: Greg Lawrence, Assistant Lab Director**



Environmental Laboratories, Inc.  
 587 East Middle Turnpike, P.O.Box 370, Manchester, CT 06045  
 Tel. (860) 645-1102 Fax (860) 645-0823

# Analysis Report

October 18, 2018

FOR: Attn: Mr. Bob Hobbins  
 Tighe & Bond  
 213 Court St, Suite 1100  
 Middletown, CT 06457

Sample Information

Matrix: BULK  
 Location Code: TIGHE  
 Rush Request: Standard  
 P.O.#:

Custody Information

Collected by: BH  
 Received by: LB  
 Analyzed by: see "By" below

Date

10/11/18  
 10/12/18

Time

11:50

## Laboratory Data

SDG ID: GCB70506  
 Phoenix ID: CB70507

Project ID: 28-2087-031  
 Client ID: EDC-01B

Parameter	Result	RL/ PQL	Units	Dilution	Date/Time	By	Reference
Caulk Extraction for PCB	Completed				10/17/18	XX/KL/AK	SW3540C

### PCB (Soxhlet SW3540C)

PCB-1016	ND	1100	ug/Kg	2	10/18/18	AW	SW8082A
PCB-1221	ND	1100	ug/Kg	2	10/18/18	AW	SW8082A
PCB-1232	ND	1100	ug/Kg	2	10/18/18	AW	SW8082A
PCB-1242	ND	1100	ug/Kg	2	10/18/18	AW	SW8082A
PCB-1248	ND	1100	ug/Kg	2	10/18/18	AW	SW8082A
PCB-1254	2700	1100	ug/Kg	2	10/18/18	AW	SW8082A
PCB-1260	ND	1100	ug/Kg	2	10/18/18	AW	SW8082A
PCB-1262	ND	1100	ug/Kg	2	10/18/18	AW	SW8082A
PCB-1268	ND	1100	ug/Kg	2	10/18/18	AW	SW8082A

### QA/QC Surrogates

% DCBP	87		%	2	10/18/18	AW	30 - 150 %
% TCMX	114		%	2	10/18/18	AW	30 - 150 %

Parameter	Result	RL/ PQL	Units	Dilution	Date/Time	By	Reference
-----------	--------	------------	-------	----------	-----------	----	-----------

RL/PQL=Reporting/Practical Quantitation Level ND=Not Detected BRL=Below Reporting Level  
QA/QC Surrogates: Surrogates are compounds (preceeded with a %) added by the lab to determine analysis efficiency. Surrogate results(%) listed in the report are not "detected" compounds.

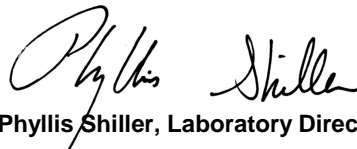
**Comments:**

Results are reported on an ``as received`` basis, and are not corrected for dry weight.

All soils, solids and sludges are reported on a dry weight basis unless otherwise noted in the sample comments.

If there are any questions regarding this data, please call Phoenix Client Services.

This report must not be reproduced except in full as defined by the attached chain of custody.



**Phyllis Shiller, Laboratory Director**

**October 18, 2018**

**Reviewed and Released by: Greg Lawrence, Assistant Lab Director**



Environmental Laboratories, Inc.  
 587 East Middle Turnpike, P.O.Box 370, Manchester, CT 06045  
 Tel. (860) 645-1102 Fax (860) 645-0823

# Analysis Report

October 18, 2018

FOR: Attn: Mr. Bob Hobbins  
 Tighe & Bond  
 213 Court St, Suite 1100  
 Middletown, CT 06457

Sample Information

Matrix: BULK  
 Location Code: TIGHE  
 Rush Request: Standard  
 P.O.#:

Custody Information

Collected by: BH  
 Received by: LB  
 Analyzed by: see "By" below

Date

10/11/18  
 10/12/18

Time

11:50

## Laboratory Data

SDG ID: GCB70506  
 Phoenix ID: CB70508

Project ID: 28-2087-031  
 Client ID: EDC-01C

Parameter	Result	RL/ PQL	Units	Dilution	Date/Time	By	Reference
Caulk Extraction for PCB	Completed				10/12/18	X/K/AK	SW3540C

**PCB (Soxhlet SW3540C)**

PCB-1016	ND	830	ug/Kg	5	10/16/18	AW	SW8082A
PCB-1221	ND	830	ug/Kg	5	10/16/18	AW	SW8082A
PCB-1232	ND	830	ug/Kg	5	10/16/18	AW	SW8082A
PCB-1242	ND	830	ug/Kg	5	10/16/18	AW	SW8082A
PCB-1248	ND	830	ug/Kg	5	10/16/18	AW	SW8082A
PCB-1254	ND	830	ug/Kg	5	10/16/18	AW	SW8082A
PCB-1260	ND	830	ug/Kg	5	10/16/18	AW	SW8082A
PCB-1262	ND	830	ug/Kg	5	10/16/18	AW	SW8082A
PCB-1268	ND	830	ug/Kg	5	10/16/18	AW	SW8082A

**QA/QC Surrogates**

% DCBP	99		%	5	10/16/18	AW	30 - 150 %
% TCMX	60		%	5	10/16/18	AW	30 - 150 %

Parameter	Result	RL/ PQL	Units	Dilution	Date/Time	By	Reference
-----------	--------	------------	-------	----------	-----------	----	-----------

RL/PQL=Reporting/Practical Quantitation Level ND=Not Detected BRL=Below Reporting Level  
QA/QC Surrogates: Surrogates are compounds (preceeded with a %) added by the lab to determine analysis efficiency. Surrogate results(%) listed in the report are not "detected" compounds.

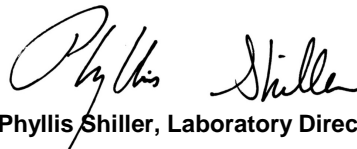
**Comments:**

Results are reported on an ``as received`` basis, and are not corrected for dry weight.

All soils, solids and sludges are reported on a dry weight basis unless otherwise noted in the sample comments.

If there are any questions regarding this data, please call Phoenix Client Services.

This report must not be reproduced except in full as defined by the attached chain of custody.



**Phyllis Shiller, Laboratory Director**

**October 18, 2018**

**Reviewed and Released by: Greg Lawrence, Assistant Lab Director**





Environmental Laboratories, Inc.  
 587 East Middle Turnpike, P.O.Box 370, Manchester, CT 06045  
 Tel. (860) 645-1102 Fax (860) 645-0823

# QA/QC Report

October 18, 2018

## QA/QC Data

SDG I.D.: GCB70506

Parameter	Blank	Blk RL	LCS %	LCSD %	LCS RPD	MS %	MSD %	MS RPD	% Rec Limits	% RPD Limits
QA/QC Batch 451618 (ug/Kg), QC Sample No: CB67851 10X (CB70506, CB70508)										
<u>Polychlorinated Biphenyls - Bulk</u>										
PCB-1016	ND	170	87	89	2.3				40 - 140	30
PCB-1221	ND	170							40 - 140	30
PCB-1232	ND	170							40 - 140	30
PCB-1242	ND	170							40 - 140	30
PCB-1248	ND	170							40 - 140	30
PCB-1254	ND	170							40 - 140	30
PCB-1260	ND	170	89	91	2.2				40 - 140	30
PCB-1262	ND	170							40 - 140	30
PCB-1268	ND	170							40 - 140	30
% DCBP (Surrogate Rec)	97	%	97	99	2.0				30 - 150	30
% TCMX (Surrogate Rec)	97	%	99	99	0.0				30 - 150	30

Comment:

A LCS and LCS Duplicate were performed instead of a matrix spike and matrix spike duplicate.

QA/QC Batch 452214 (ug/Kg), QC Sample No: CB70507 10X (CB70507)

### Polychlorinated Biphenyls - Bulk


PCB-1016	ND	170	92	76	19.0				40 - 140	30
PCB-1221	ND	170							40 - 140	30
PCB-1232	ND	170							40 - 140	30
PCB-1242	ND	170							40 - 140	30
PCB-1248	ND	170							40 - 140	30
PCB-1254	ND	170							40 - 140	30
PCB-1260	ND	170	103	89	14.6				40 - 140	30
PCB-1262	ND	170							40 - 140	30
PCB-1268	ND	170							40 - 140	30
% DCBP (Surrogate Rec)	103	%	113	101	11.2				30 - 150	30
% TCMX (Surrogate Rec)	93	%	103	87	16.8				30 - 150	30

Comment:

A LCS and LCS Duplicate were performed instead of a matrix spike and matrix spike duplicate.

If there are any questions regarding this data, please call Phoenix Client Services at extension 200.

- RPD - Relative Percent Difference
- LCS - Laboratory Control Sample
- LCSD - Laboratory Control Sample Duplicate
- MS - Matrix Spike
- MS Dup - Matrix Spike Duplicate
- NC - No Criteria
- Intf - Interference

  
 Phyllis Shiller, Laboratory Director  
 October 18, 2018

Thursday, October 18, 2018

Criteria: None

State: CT

## Sample Criteria Exceedances Report

GCB70506 - TIGHE

SampNo	Acode	Phoenix Analyte	Criteria	Result	RL	Criteria	RL Criteria	Analysis Units
CB70507	\$PCB_SOXR	PCB-1268	CT / Requested PCB RL /	ND	1100	1000	1000	ug/Kg
CB70507	\$PCB_SOXR	PCB-1262	CT / Requested PCB RL /	ND	1100	1000	1000	ug/Kg
CB70507	\$PCB_SOXR	PCB-1260	CT / Requested PCB RL /	ND	1100	1000	1000	ug/Kg
CB70507	\$PCB_SOXR	PCB-1254	CT / Requested PCB RL /	2700	1100	1000	1000	ug/Kg
CB70507	\$PCB_SOXR	PCB-1248	CT / Requested PCB RL /	ND	1100	1000	1000	ug/Kg
CB70507	\$PCB_SOXR	PCB-1242	CT / Requested PCB RL /	ND	1100	1000	1000	ug/Kg
CB70507	\$PCB_SOXR	PCB-1232	CT / Requested PCB RL /	ND	1100	1000	1000	ug/Kg
CB70507	\$PCB_SOXR	PCB-1221	CT / Requested PCB RL /	ND	1100	1000	1000	ug/Kg
CB70507	\$PCB_SOXR	PCB-1016	CT / Requested PCB RL /	ND	1100	1000	1000	ug/Kg

Phoenix Laboratories does not assume responsibility for the data contained in this exceedance report. It is provided as an additional tool to identify requested criteria exceedences. All efforts are made to ensure the accuracy of the data (obtained from appropriate agencies). A lack of exceedence information does not necessarily suggest conformance to the criteria. It is ultimately the site professional's responsibility to determine appropriate compliance.



**Environmental Laboratories, Inc.**  
587 East Middle Turnpike, P.O.Box 370, Manchester, CT 06045  
Tel. (860) 645-1102 Fax (860) 645-0823



## Analysis Comments

October 18, 2018

SDG I.D.: GCB70506

---

The following analysis comments are made regarding exceptions to criteria not already noted in the Analysis Report or QA/QC Report: None.

# PCB SOURCE SAMPLE CHAIN OF CUSTODY

**Tighe & Bond**

Project Number: 28-2087-031 Date: 10/11/2012  
 Project Name: Newfield Elementary School Door Replacement Page: 1 of 1  
 Site Address: 345 Pepper Ridge Rd, Stamford, CT  
 Project Manager: Kevin McCarthy

Sample ID	Sample Location	Material	Substrate	Date Collected	Time Collected	Notes
EDC-01A 70509	Exterior Door - Stage	Tan Exterior Door Caulking	Brick	10/10/2018	pm	
EDC-01B 70507	Exterior Door - Gym (at kitchen)	Tan Exterior Door Caulking	Concrete	10/10/2018	pm	
EDC-01C 70508	Exterior Door - Auditorium (at bid. front)	Tan Exterior Door Caulking	Brick	10/10/2018	pm	

Analysis Method: 3500B/3540C (Extraction)/8082 (Analysis) Laboratory: Phoenix Turnaround Time: 5 day

Email PDF of Results to: [jhobbins@tighebond.com](mailto:jhobbins@tighebond.com) Reporting Limit: <1 ppm

**Special Instructions:**

Samples Collected By: Bob Hobbins Date: 10-10-18 Time: 3 pm - 6 pm  
 Relinquished [By][To]: BA [ 10-11-18 ] Date: 10-11-18 Time: 1600  
 Relinquished [By][To]: Bob Hobbins [ 10-12-18 ] Date: 10-12-18 Time: 1045  
 Relinquished [By][To]: BA [ 10-12-18 ] Date: 10-12-18 Time: 10:45

*Kimpeal B 10-12-18 11:50*





Tuesday, July 16, 2019

Attn: Meredith Febbraio  
Tighe & Bond  
213 Court St, Suite 1100  
Middletown, CT 06457

Project ID: NEWFIELD ELEMENTARY SCHOOL  
SDG ID: GCD56446  
Sample ID#s: CD56446

This laboratory is in compliance with the NELAC requirements of procedures used except where indicated.

This report contains results for the parameters tested, under the sampling conditions described on the Chain Of Custody, as received by the laboratory. This report is incomplete unless all pages indicated in the pagination at the bottom of the page are included.

All soils, solids and sludges are reported on a dry weight basis unless otherwise noted in the sample comments.

A scanned version of the COC form accompanies the analytical report and is an exact duplicate of the original.

If you are the client above and have any questions concerning this testing, please do not hesitate to contact Phoenix Client Services at ext.200. The contents of this report cannot be discussed with anyone other than the client listed above without their written consent.

Sincerely yours,

A handwritten signature in black ink that reads "Phyllis Shiller". The signature is written in a cursive style.

Phyllis/Shiller  
Laboratory Director

NELAC - #NY11301  
CT Lab Registration #PH-0618  
MA Lab Registration #M-CT007  
ME Lab Registration #CT-007  
NH Lab Registration #213693-A,B

NJ Lab Registration #CT-003  
NY Lab Registration #11301  
PA Lab Registration #68-03530  
RI Lab Registration #63  
UT Lab Registration #CT00007  
VT Lab Registration #VT11301



Environmental Laboratories, Inc.  
587 East Middle Turnpike, P.O.Box 370, Manchester, CT 06045  
Tel. (860) 645-1102 Fax (860) 645-0823

## Sample Id Cross Reference

July 16, 2019

SDG I.D.: GCD56446

Project ID: NEWFIELD ELEMENTARY SCHOOL

---

Client Id	Lab Id	Matrix
NFE-TAN-EDC-BRICK-01	CD56446	BRICK



Environmental Laboratories, Inc.  
 587 East Middle Turnpike, P.O.Box 370, Manchester, CT 06045  
 Tel. (860) 645-1102 Fax (860) 645-0823

# Analysis Report

July 16, 2019

FOR: Attn: Meredith Febbraio  
 Tighe & Bond  
 213 Court St, Suite 1100  
 Middletown, CT 06457

Sample Information

Matrix: BRICK  
 Location Code: TIGHE  
 Rush Request: 24 Hour  
 P.O.#: 28-2087-033D

Custody Information

Collected by:  
 Received by: CP  
 Analyzed by: see "By" below

Date

07/12/19  
 07/12/19

Time

11:45  
 16:35

## Laboratory Data

SDG ID: GCD56446  
 Phoenix ID: CD56446

Project ID: NEWFIELD ELEMENTARY SCHOOL  
 Client ID: NFE-TAN-EDC-BRICK-01

Parameter	Result	RL/ PQL	Units	Dilution	Date/Time	By	Reference
Percent Solid	100		%		07/12/19	DA	SW846-%Solid
Extraction for PCB	Completed				07/12/19	J/X/ML/SESW3540C	

**PCB (Soxhlet SW3540C)**

PCB-1016	ND	720	ug/Kg	5	07/15/19	SC	SW8082A
PCB-1221	ND	720	ug/Kg	5	07/15/19	SC	SW8082A
PCB-1232	ND	720	ug/Kg	5	07/15/19	SC	SW8082A
PCB-1242	ND	720	ug/Kg	5	07/15/19	SC	SW8082A
PCB-1248	ND	720	ug/Kg	5	07/15/19	SC	SW8082A
PCB-1254	ND	720	ug/Kg	5	07/15/19	SC	SW8082A
PCB-1260	ND	720	ug/Kg	5	07/15/19	SC	SW8082A
PCB-1262	ND	720	ug/Kg	5	07/15/19	SC	SW8082A
PCB-1268	ND	720	ug/Kg	5	07/15/19	SC	SW8082A

**QA/QC Surrogates**

% DCBP	92		%	5	07/15/19	SC	30 - 150 %
% DCBP (Confirmation)	90		%	5	07/15/19	SC	30 - 150 %
% TCMX	72		%	5	07/15/19	SC	30 - 150 %
% TCMX (Confirmation)	73		%	5	07/15/19	SC	30 - 150 %

Parameter	Result	RL/ PQL	Units	Dilution	Date/Time	By	Reference
-----------	--------	------------	-------	----------	-----------	----	-----------

RL/PQL=Reporting/Practical Quantitation Level ND=Not Detected BRL=Below Reporting Level  
QA/QC Surrogates: Surrogates are compounds (preceded with a %) added by the lab to determine analysis efficiency. Surrogate results(%) listed in the report are not "detected" compounds.

**Comments:**

All soils, solids and sludges are reported on a dry weight basis unless otherwise noted in the sample comments.  
If you are the client above and have any questions concerning this testing, please do not hesitate to contact Phoenix Client Services at ext.200.  
The contents of this report cannot be discussed with anyone other than the client listed above without their written consent.



**Phyllis Shiller, Laboratory Director**

**July 16, 2019**

**Reviewed and Released by: Greg Lawrence, Assistant Lab Director**





Environmental Laboratories, Inc.  
 587 East Middle Turnpike, P.O.Box 370, Manchester, CT 06045  
 Tel. (860) 645-1102 Fax (860) 645-0823

# QA/QC Report

July 16, 2019

## QA/QC Data

SDG I.D.: GCD56446


Parameter	Blank	Blk RL	LCS %	LCSD %	LCS RPD	MS %	MSD %	MS RPD	% Rec Limits	% RPD Limits
QA/QC Batch 487449 (ug/Kg), QC Sample No: CD55864 10X (CD56446)										
<u>Polychlorinated Biphenyls</u>										
PCB-1016	ND	170	96	101	5.1				40 - 140	30
PCB-1221	ND	170							40 - 140	30
PCB-1232	ND	170							40 - 140	30
PCB-1242	ND	170							40 - 140	30
PCB-1248	ND	170							40 - 140	30
PCB-1254	ND	170							40 - 140	30
PCB-1260	ND	170	92	105	13.2				40 - 140	30
PCB-1262	ND	170							40 - 140	30
PCB-1268	ND	170							40 - 140	30
% DCBP (Surrogate Rec)	98	%	106	99	6.8				30 - 150	30
% DCBP (Surrogate Rec) (Confirm)	97	%	104	97	7.0				30 - 150	30
% TCMX (Surrogate Rec)	92	%	99	106	6.8				30 - 150	30
% TCMX (Surrogate Rec) (Confirm)	84	%	93	104	11.2				30 - 150	30

Comment:

A LCS and LCS Duplicate were performed instead of a matrix spike and matrix spike duplicate.

If there are any questions regarding this data, please call Phoenix Client Services at extension 200.

- RPD - Relative Percent Difference
- LCS - Laboratory Control Sample
- LCSD - Laboratory Control Sample Duplicate
- MS - Matrix Spike
- MS Dup - Matrix Spike Duplicate
- NC - No Criteria
- Intf - Interference

  
 Phyllis Shiller, Laboratory Director  
 July 16, 2019

Tuesday, July 16, 2019

Criteria: None

State: CT

## Sample Criteria Exceedances Report

GCD56446 - TIGHE

SampNo	Acode	Phoenix Analyte	Criteria	Result	RL	Criteria	RL Criteria	Analysis Units
--------	-------	-----------------	----------	--------	----	----------	----------------	-------------------

\*\*\* No Data to Display \*\*\*

Phoenix Laboratories does not assume responsibility for the data contained in this exceedance report. It is provided as an additional tool to identify requested criteria exceedences. All efforts are made to ensure the accuracy of the data (obtained from appropriate agencies). A lack of exceedence information does not necessarily suggest conformance to the criteria. It is ultimately the site professional's responsibility to determine appropriate compliance.



**Environmental Laboratories, Inc.**  
587 East Middle Turnpike, P.O.Box 370, Manchester, CT 06045  
Tel. (860) 645-1102 Fax (860) 645-0823



## Analysis Comments

July 16, 2019

SDG I.D.: GCD56446

---

The following analysis comments are made regarding exceptions to criteria not already noted in the Analysis Report or QA/QC Report: None.

19.2

# PCB SUBSTRATE SAMPLE CHAIN OF CUSTODY

## Tighe & Bond

Project Number: 28-2087-033D Date: 7/12/2019  
 Project Name: Newfield Elementary School Page: / of /  
 Site Address: 345 Pepper Ridge Rd., Stamford, CT  
 Project Manager: Meredith Febbraio

Sample ID	Sample Location	Associated PCB Material	Substrate	Date Collected	Time Collected	Distance/ Depth in Inches
NFE-TAN-EDC-BRICK-01	Auditorium Side Door	Exterior Door Caulk	Brick	7/12/2019	1145	at joint & 1/2"
						56446

**Analysis Method:** EPA Method 3500B/3540C (extraction), EPA Method 8082 (anal) **Laboratory:** Phoenix **Turnaround Time:** 24 Hours  
**Email PDF of Results to:** mfebbraio@tighebond.com **Reporting Limit:** <1 ppm

**Special Instructions:** ~~Bob Hobbin's~~  
**Samples Collected By:** Bob Hobbin's Date: 7-12-19 Time: 4:37  
**Relinquished [By][To]:** [ Samuel Evans ] [ ] [ ] Date: 7/12/19 Time: 16:35  
**Relinquished [By][To]:** [ ] [ ] Time:  
**Relinquished [By][To]:** [ ] [ ] Time: