

**1 SKYLIGHT PLAN**  
3/16"=1'-0"

Drawing Number: **A-1**  
 Date: 6/1/19  
 Scale: AS NOTED  
 Drawn By: ECC  
 Project Number: 19-0395

**Glass Block Elevation & Details**

- GENERAL DEMOLITION NOTES**
- CONSULT OWNER FOR BUILDING HAZ-MAT TESTING INFORMATION AND ABATEMENT DRAWINGS AND SPECIFICATIONS PRIOR TO ANY REMOVALS.
  - CONTRACTOR IS RESPONSIBLE FOR PROJECT- REQUIRED DEMOLITION WHERE BUILDING HAZ-MAT TESTING HAS INDICATED HAZARDOUS MATERIALS ARE NOT PRESENT. IF IN SCOPE OF OWNER'S ABATEMENT DRAWINGS AND SPECIFICATIONS, AWAIT ABATEMENT UNDER SEPARATE CONTRACT BEFORE PROCEEDING WITH DEMOLITION. IF AREA IN QUESTION HAS NOT YET BEEN TESTED FOR HAZMAT, NOTIFY OWNER AND AWAIT FURTHER DIRECTION.
  - CONTRACTORS SHALL FIELD VERIFY ALL CONDITIONS AND DIMENSIONS.
  - COORDINATE ALL DEMOLITION WITH NEW WORK REQUIRED.
  - EXISTING FIXTURES AND EQUIPMENT SHALL BE PROTECTED FROM DAMAGE.
  - CONTRACTOR TO VERIFY ALL DIMENSIONS IN FIELD.
  - CONTRACTOR ASSUMES ALL RESPONSIBILITY DURING CONSTRUCTION AND WILL REPLACE ANYTHING DAMAGED DURING THE PROJECT AND PROVIDE ALL LABOR AND MATERIALS AT NO ADDITIONAL COST TO THE OWNER.
  - REMOVE, STORE AND REINSTALL ALL MISC. ITEMS THAT CONFLICT WITH COMPLETING THE SCOPE OF WORK.

**SPECIFICATIONS:**

FURNISH ALL LABOR, MATERIALS, TOOLS, APPLIANCES, EQUIPMENT, ETC. AS MAY BE REQUIRED TO COMPLETE THE WORK.

SUBMITTALS  
 PRODUCT DATA: SUBMIT MANUFACTURER'S TECHNICAL PRODUCT DATA WITH SELECTED PRODUCT CLEARLY INDICATED. INCLUDE FURNISHED SPECIALTIES AND ACCESSORIES, AND INSTALLATION INSTRUCTIONS.  
 SHOP DRAWINGS: SUBMIT MANUFACTURER'S ASSEMBLY TYPE SHOP DRAWINGS INDICATING DIMENSIONS, ROUGHING-IN REQUIREMENTS, REQUIRED CLEARANCES AND METHODS OF ASSEMBLY OF COMPONENTS AND ANCHORAGES.  
 SAMPLES: SUBMIT SAMPLES FOR INITIAL SELECTION BY THE ARCHITECT.

FASTENERS AND ACCESSORIES:  
 CORROSION-RESISTANT, NON-STAINING, NON-BLEEDING FASTENERS AND ACCESSORIES; COMPATIBLE WITH ADJACENT MATERIALS. ALUMINUM RETAINING CAP FASTENERS AND FRAMING MEMBER FASTENERS SHALL BE ASTM A 193/A 193M, SERIES 300 STAINLESS-STEEL SCREWS.

INSULATING GLASS:  
 BASIS OF DESIGN: THICKNESS SHALL MATCH EXISTING. VIRACON VZRE3-38 CONSISTING OF 1/4" GREY TINT EXTERIOR LITE WITH VRE-38 ON #2 SURFACE, 1/2" SEALED AIR SPACE, 1/4" CLEAR LITE WITH VZE-SC ON #3 SURFACE, 0.060" CLEAR PVB LAMINATE, & 1/4" CLEAR INTERIOR LITE. GLASS MUST MEET THE REQUIREMENTS OF AAMA GLASS DESIGN FOR SLOPED GLAZING.

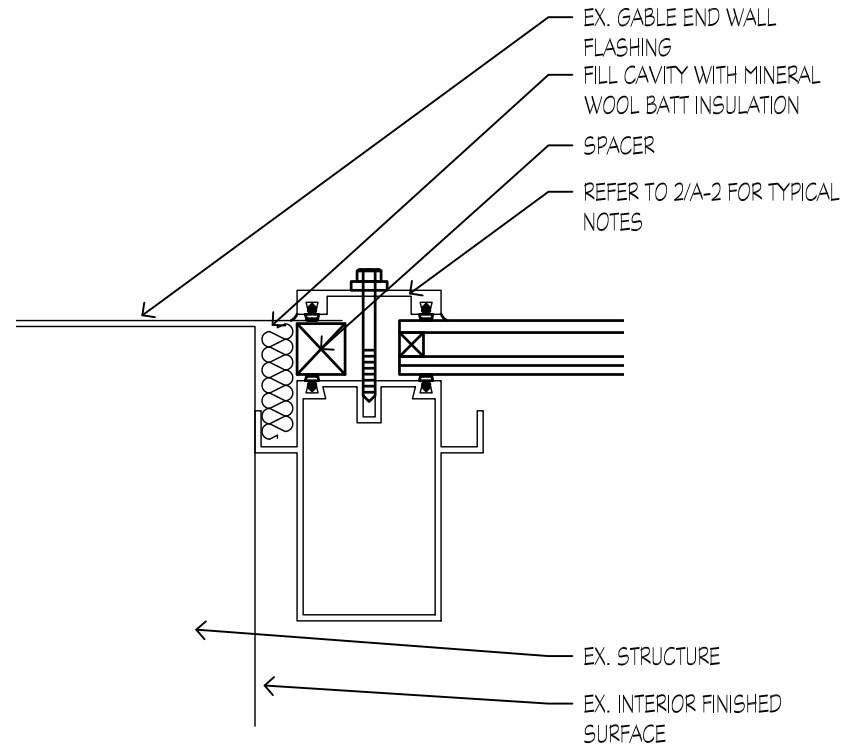
SEALANTS:  
 BASIS OF DESIGN: SKYLIGHT STRUCTURAL SEALANT - TREMCO PROGLAZE SSG. EXTERIOR SEALANT - TREMCO SPECTREM 1. INTERIOR SEALANT - TREMCO TREMFLEX834.

SHEET METAL:  
 ALUMINUM: PROVIDE GAUGE AS INDICATED ON DRAWINGS. FINISH SHALL HAVE A MINIMUM OF 50% PVDF CONTENT, SIMILAR TO KYNAR 500.  
 NAILS FOR FASTENING ALUMINUM: STAINLESS STEEL OF STRONGHOLD TYPE WITH A LARGE FLAT HEAD. NOT SMALLER THAN #12 GAUGE WITH LENGTH SUFFICIENT TO PENETRATE ROOF/BLOCKING AND NOT LESS 7/8".

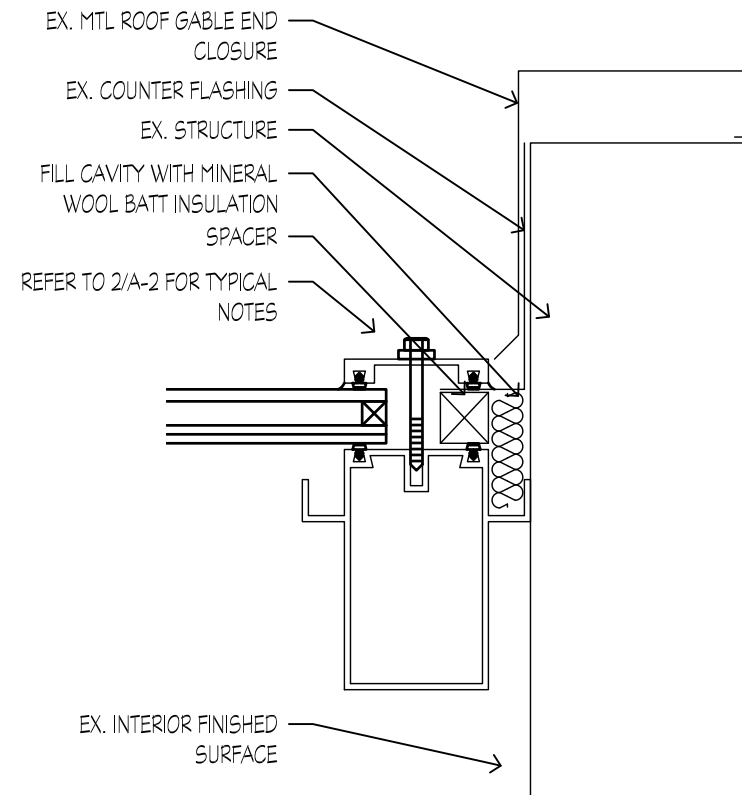
- GENERAL CONSTRUCTION NOTES**
- PROTECT ITEMS THAT ARE EXISTING TO REMAIN.
  - GLAZING INSTALLER TO PROVIDE SKYLIGHT SHOP DRAWINGS SHOWING ACTUAL SYSTEM CONFIGURATION, MATERIALS, & DETAILS. ARCHITECTS DRAWINGS ARE FOR ILLUSTRATION PURPOSES ONLY AND ARE BASED ON ORIGINAL ARCHITECTURAL DETAILS AND SURFACE OBSERVATION.

**SILVER/PETRUCELLI + ASSOCIATES**  
 Architects / Engineers / Interior Designers  
 3190 Whitney Avenue, Hamden, CT 06518-2340  
 One Post Hill Place, New London, CT 06320  
 Tel. 203.230.9007 Fax. 203.230.8247  
 silverpetrucelli.com

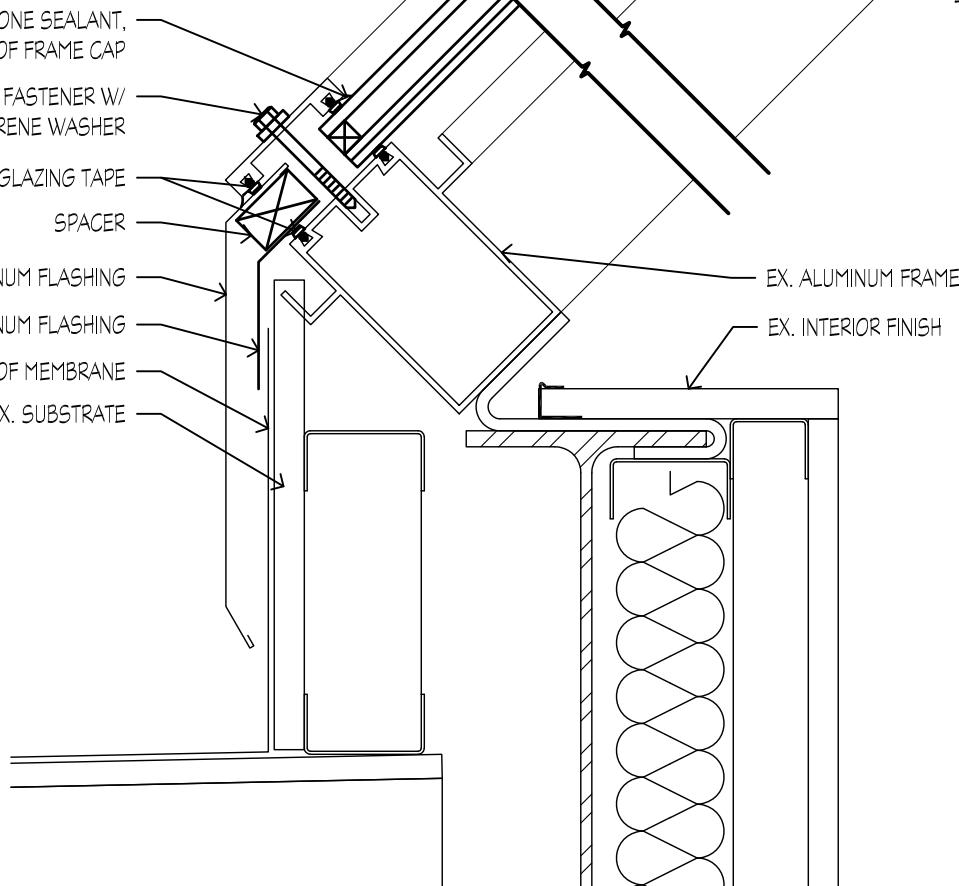
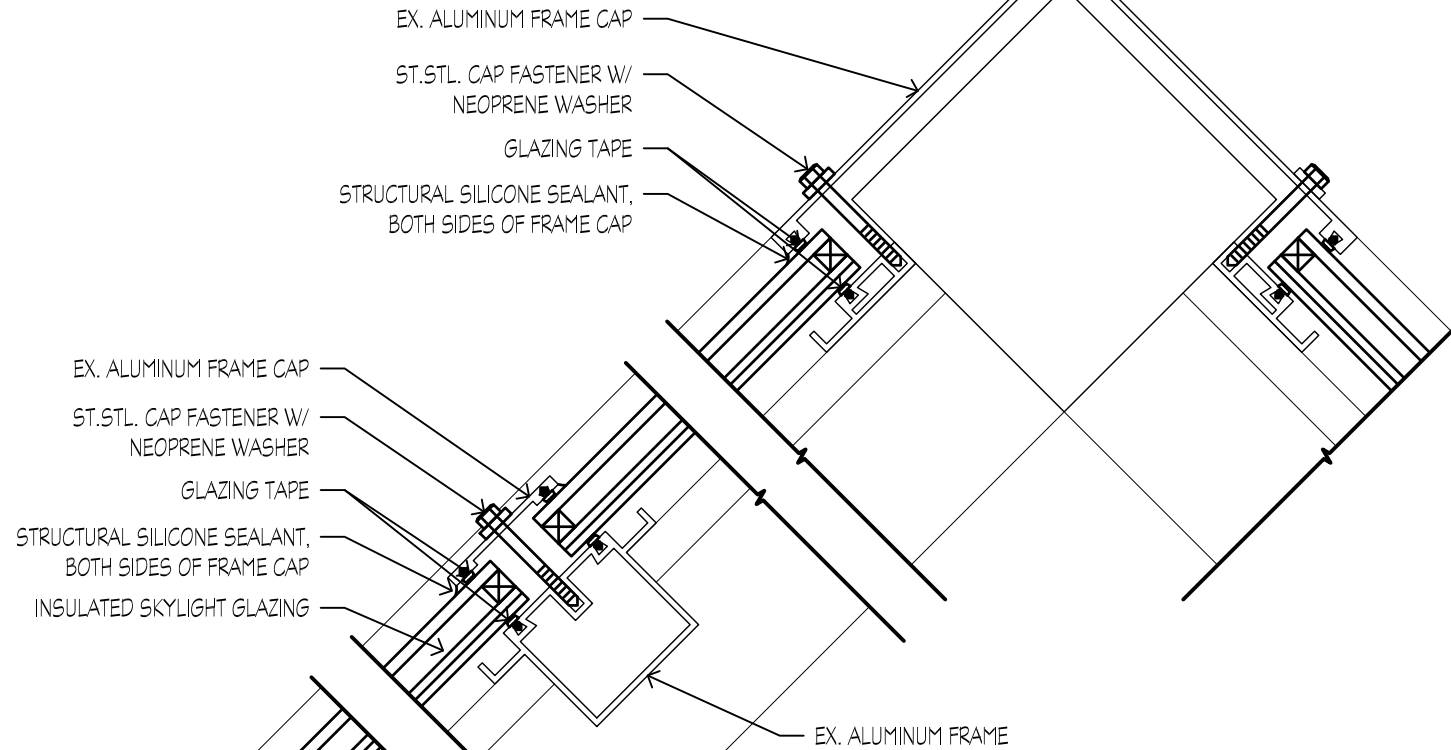
**KT Murphy Elementary School**  
**Media Center Skylight Repairs**  
 19 Horton Street  
 Stamford, Connecticut 06902



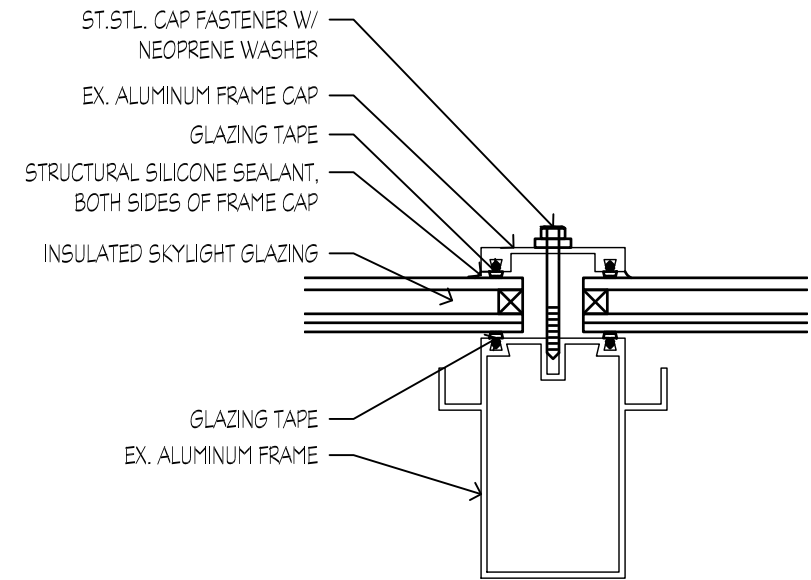
**4** SKYLIGHT RAFTER SIDEWALL TO METAL ROOF  
 3'-1'-0"



**3** SKYLIGHT RAFTER SIDEWALL TO METAL ROOF  
 3'-1'-0"



**1** SKYLIGHT BASE DETAIL  
 3'-1'-0"



**2** SKYLIGHT RAFTER DETAIL  
 3'-1'-0"

